

THIS DRAWING IS UNPUBLISHED.	RELEASED FOR PUBLICATION	N/A , N/A .
© COPYRIGHT N/A BY TYCO ELECTRONICS CORPORATION.	ALL RIGHTS RESERVED.	

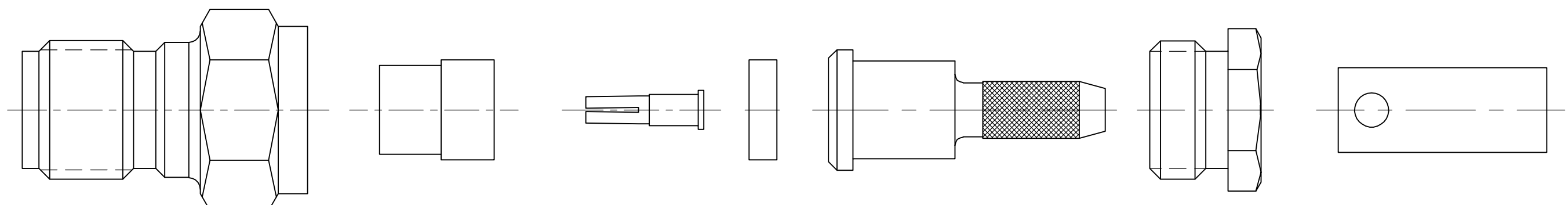
LOC	DIST	REVISIONS					
DF	X0	P	LTR	DESCRIPTION	DATE	DWN	APVD
			C	REV PER 0G3D-0032-03	11-03	JMK	JL

COMPONENT	MATERIAL	FINISH
HOUSING —	STAINLESS STEEL PER ASTM-A-484 OR ASTM-A-582 TYPE 303	PASSIVATED PER ASTM-A-380 —
— DIELECTRIC —	PTFE FLUORCARBON PER ASTM-D-1457 —	— — —
— CENTER CONTACT —	BERYLLIUM COPPER PER ASTM-B-196 OR 197 ALLOY C17300, CONDITION H	GOLD PLATED PER ASTM-B-488 —
CLAMP NUT —	STAINLESS STEEL PER ASTM-A-484 OR ASTM-A-582 TYPE 303	PASSIVATED PER ASTM-A-380 —
— — —	— — —	— — —
— FERRULE —	COPPER OR BRASS ALLOY, ROCKWELL F65 MAX	GOLD PLATED PER ASTM-B-488 —
— — —	— — —	— — —
— INNER SLEEVE —	STAINLESS STEEL PER ASTM-A-484 OR ASTM-A-582 TYPE 303	GOLD PLATED PER ASTM-B-488 —

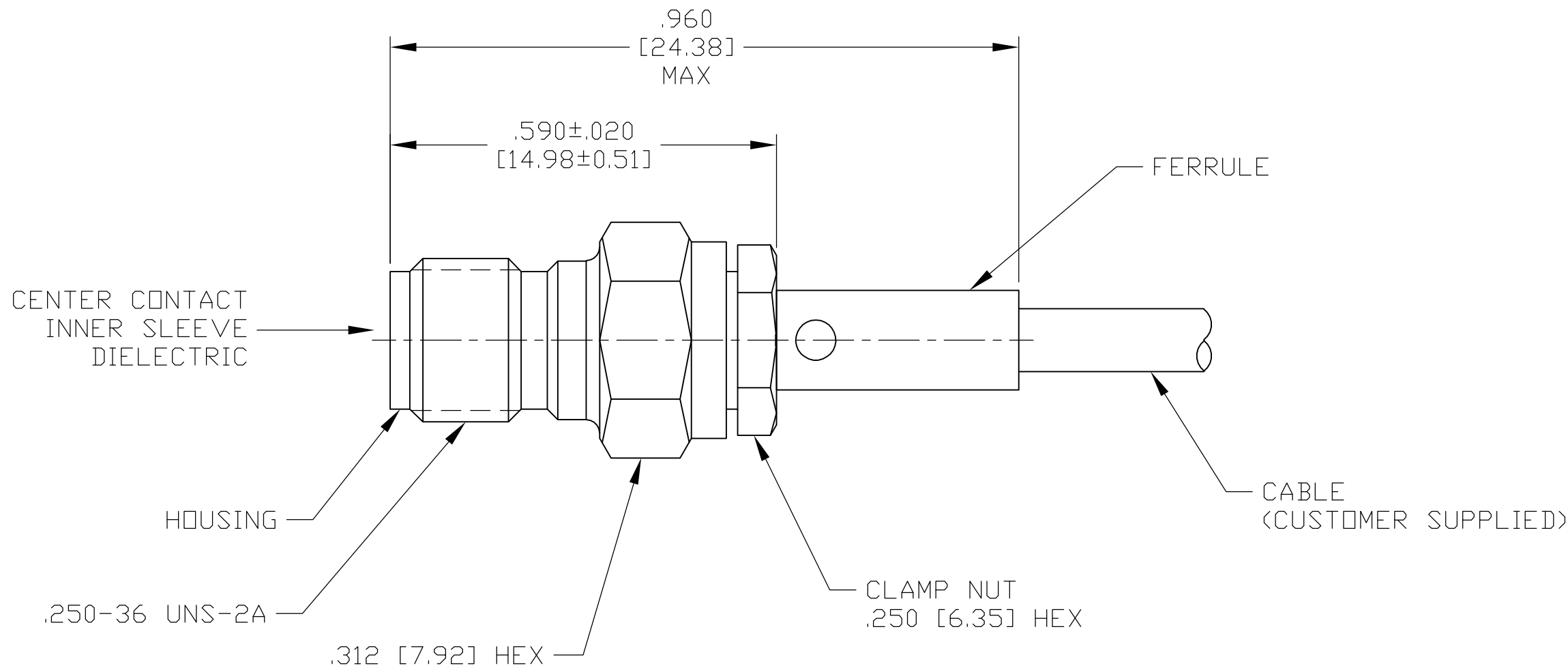
ENVIRONMENTAL
TEMPERATURE RATING: -65°C TO +165°C
VIBRATION: MIL-STD-202, METHOD 204, CONDITION D
SHOCK: MIL-STD-202, METHOD 213, CONDITION 1
MOISTURE RESISTANCE: MIL-STD-202, METHOD 106
CORROSION: MIL-STD-202, METHOD 101, CONDITION B. 5% SALT SPRAY
THERMAL SHOCK: MIL-STD-202, METHOD 107, CONDITION B EXCEPT HIGH TEMP 85°C

MECHANICAL		
INTERFACE DIMENSIONS: MIL-STD-348A FIG.	310.2	
RECOMMENDED MATING TORQUE:	7-10 IN-LBS	
FORCE TO ENGAGE & DISENGAGE (IN-LBS MAX:)	2.0	
WEIGHT (GRAMS):	TBD	
MATING CHARACTERISTICS:	INSERTION (MAX LBS)	2
	WITHDRAWAL (MIN OZ):	1
CABLE RETENTION:	AXIAL FORCE (LBS)	20
	TORQUE (IN-OZ):	N/A
CENTER CONTACT CAPTIVATION:	AXIAL (LBS):	6.0
	RADIAL (IN-OZ):	N/A

ELECTRICAL	
NORMAL IMPEDANCE (OHMS):	50
FREQUENCY RANGE (GHz):	DC TO 12.4
VOLT RATING @ SEA LEVEL (VRMS MAX):	250
VSWR:	1.15+0.02f(GHz)
INSERTION LOSS: (dB MAX):	.06 $\sqrt{f(\text{GHz})}$
RF LEAKAGE (dB MIN):	-60 @ 2-3GHz
CORONA 70,000 FT (VRMS MIN):	190
DIELECTRIC WITHSTANDING VOLTAGE (VRMS MIN) AT SEA LEVEL:	750
I.R. (MEGOHMS MIN):	10,000
RF HIGH POTENTIAL AT SEA LEVEL (VRMS MIN @ 5 MHz):	500
CONTACT RESISTANCE (MILLIOHMS MAX):	
	CENTER CONTACT: 3.0
	OUTER CONTACT: 2.0
	CABLE TO HOUSING: 0.5

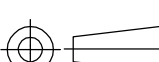


AS SHIPPED TO CUSTOMER




ASSEMBLED VIEW

DESIGNED TO USE RG-174/U OR EQUIVALENT	
CABLE ENTRY DIAMETER MIN	
HOUSING:	N/A
CONTACT:	N/A
DIELECTRIC:	.021 [0.53]
INNER SLEEVE:	.066 [1.68]
FERRULE:	.127 [3.23]

THIS DRAWING IS A CONTROLLED DOCUMENT.		
DIMENSIONS:  INCHES [mm]		TOLERANCES UNLESS OTHERWISE SPECIFIED:
		0 PLC                    ±    - 1 PLC                    ±    - 2 PLC                    ±    - 3 PLC                    ±    - 4 PLC                    ±    .005 [0.13] 5 PLC                    ±    - ANGLES                ±    -
MATERIAL		FINISH
SEE TABLE		SEE TABLE

DWN	8-28-02
J. KAISER	
CHK	10-8-02
J. LIPPERT	
APVD	10-8-02
J. LIPPERT	
PRODUCT SPEC	
—	
APPLICATION SPEC	
408-8741	
WEIGHT	TBD
CUSTOMER DRAWING	

		Tyco Electronics Corporation Harrisburg, PA 17105	
NAME SMA STRAIGHT CABLE JACK-SOLDER ATTACHMENT (M39012/57-3007) CAT A —			
SIZE A2	CAGE CODE 00779	DRAWING NO C=1051900	RESTRICTED TO —
		SCALE 5:1	SHEET 1 OF 1
			REV C

# Mouser Electronics

Authorized Distributor

Click to View Pricing, Inventory, Delivery & Lifecycle Information:

[TE Connectivity:](#)

[1051900-1](#)