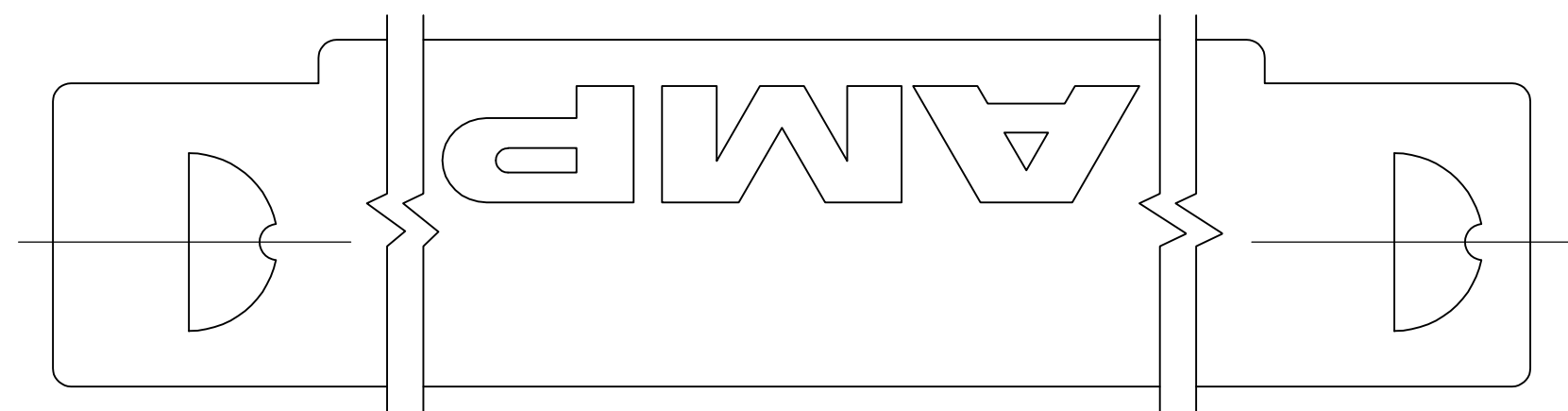
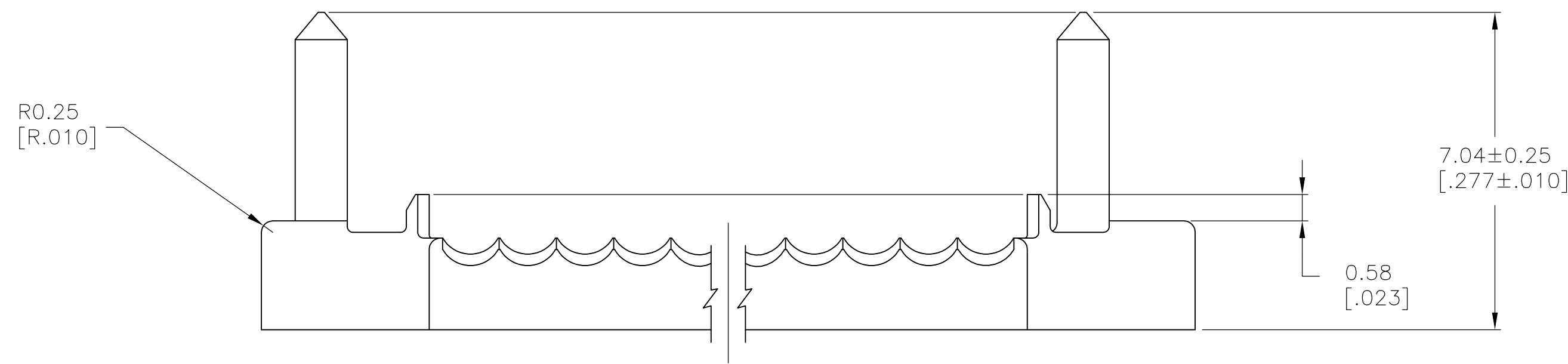
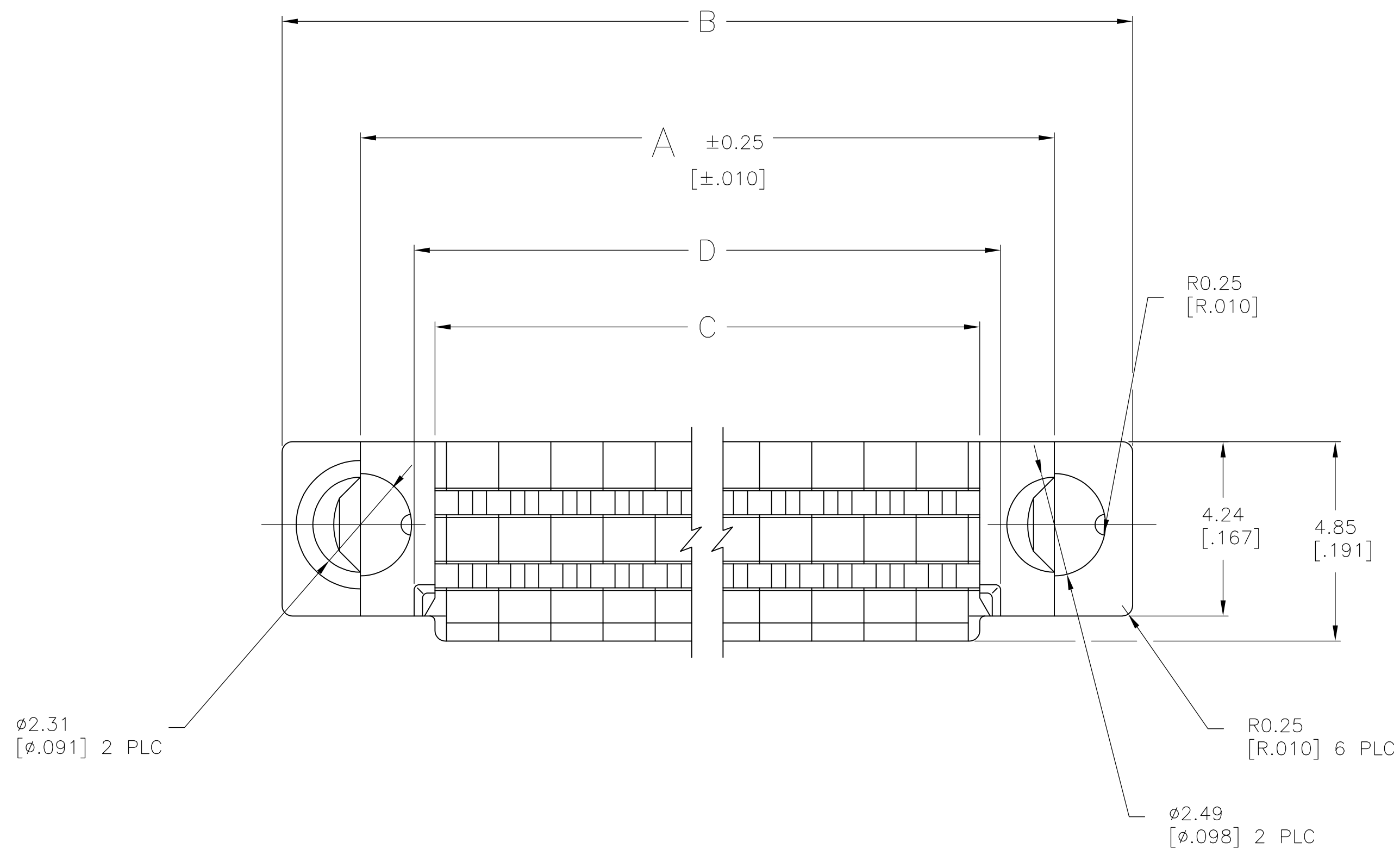

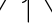


| | | | | | | | |
|-----|------|-----------|-----|---------------------------|---------|-----|------|
| LOC | DIST | REVISIONS | | | | | |
| AD | 00 | P | LTR | DESCRIPTION | DATE | DWN | APVD |
| | | | C2 | REVISED PER ECO-11-005027 | 11MAR11 | RK | HMR |

- ① MATERIAL: POLYESTER, BLACK.
- ② OBSOLETE PART NUMBER.
- ③ OBSOLETE PARTS: OBSOLETE CIS STREAMLINING PER D.RENAUD/D.SINISI



| | | | | | | |
|---------|---------|---------|---------|---------|------------|---------------------|
| 2 | 44.76 | 43.74 | 51.18 | 47.37 | 68 | 1-104891-1 |
| | [1.762] | [1.722] | [2.015] | [1.865] | | |
| 3 | 65.08 | 64.06 | 71.50 | 67.69 | 100 | 1-104891-0 |
| | [2.562] | [2.522] | [2.815] | [2.665] | | |
| | 58.73 | 57.71 | 65.15 | 61.34 | 90 | 104891-9 |
| | [2.312] | [2.272] | [2.565] | [2.415] | | |
| | 52.38 | 51.36 | 58.80 | 54.99 | 80 | 104891-8 |
| | [2.062] | [2.022] | [2.315] | [2.165] | | |
| | 46.03 | 45.01 | 52.45 | 48.64 | 70 | 104891-7 |
| | [1.812] | [1.772] | [2.065] | [1.915] | | |
| | 39.68 | 38.66 | 46.10 | 42.29 | 60 | 104891-6 |
| | [1.562] | [1.522] | [1.815] | [1.665] | | |
| | 33.33 | 32.31 | 39.75 | 35.94 | 50 | 104891-5 |
| | [1.312] | [1.272] | [1.565] | [1.415] | | |
| 26.98 | 25.96 | 33.82 | 29.59 | 40 | 104891-4 | |
| [1.062] | [1.022] | [1.315] | [1.165] | | | |
| 20.63 | 19.61 | 27.05 | 23.24 | 30 | 104891-3 | |
| [.812] | [.772] | [1.065] | [.915] | | | |
| 14.28 | 13.26 | 20.70 | 16.89 | 20 | 104891-2 | |
| [.562] | [.522] | [.815] | [.665] | | | |
| 7.92 | 6.91 | 14.35 | 10.54 | 10 | 104891-1 | |
| [.312] | [.272] | [.565] | [.415] | | | |
| | D | C | B | A | NO OF POSN | PART NUMBER |

| | | | | | | | | | |
|---|--|--|--|--|--|--------------------------|--|---|--|
| THIS DRAWING IS A CONTROLLED DOCUMENT. | | | | | | DWG NO. CASTAGNA | | 23/JUN/93 | |
| | | | | | | CHKD BY J. HERRINGTON | | 24/JUN/93 | |
| DIMENSIONS: mm. [INCHES] | | TOLERANCES UNLESS OTHERWISE SPECIFIED: | | | | APPROV. J. HERRINGTON | | NAME | |
|  | | 0 PL/C ± . | | | | PRODUCT SPEC | | TERMINATING COVER AMPMODU 50/50 GRID | |
| | | 1 PL/C ± . | | | | 108-1443 | | | |
| | | 2 PL/C ± 0.36[.015] | | | | APPLICATION SPEC | | | |
| | | ANGLES ± . | | | | 114-7010 | | SIZE CAGE CODE DRAWING NO | |
| MATERIAL | | FINISH - | | | | WEIGHT - | | A1 00779 C=104891 | |
|  | | | | | | CUSTOMER DRAWING | | SCALE 10:1 SHEET 1 OF 1 REV C2 | |

Mouser Electronics

Authorized Distributor

Click to View Pricing, Inventory, Delivery & Lifecycle Information:

[TE Connectivity:](#)

[104891-6](#)