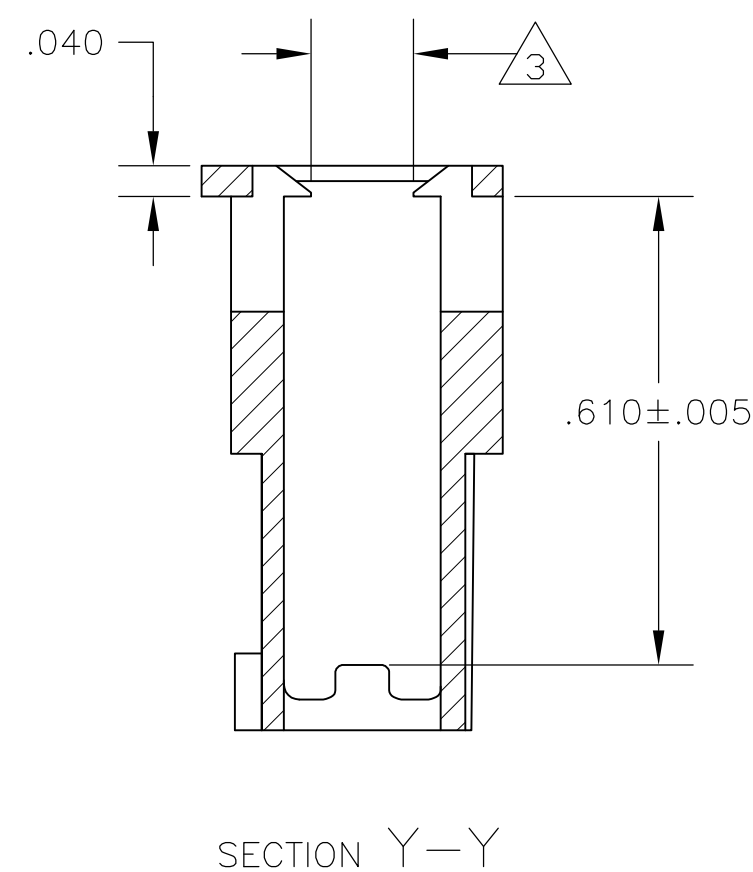
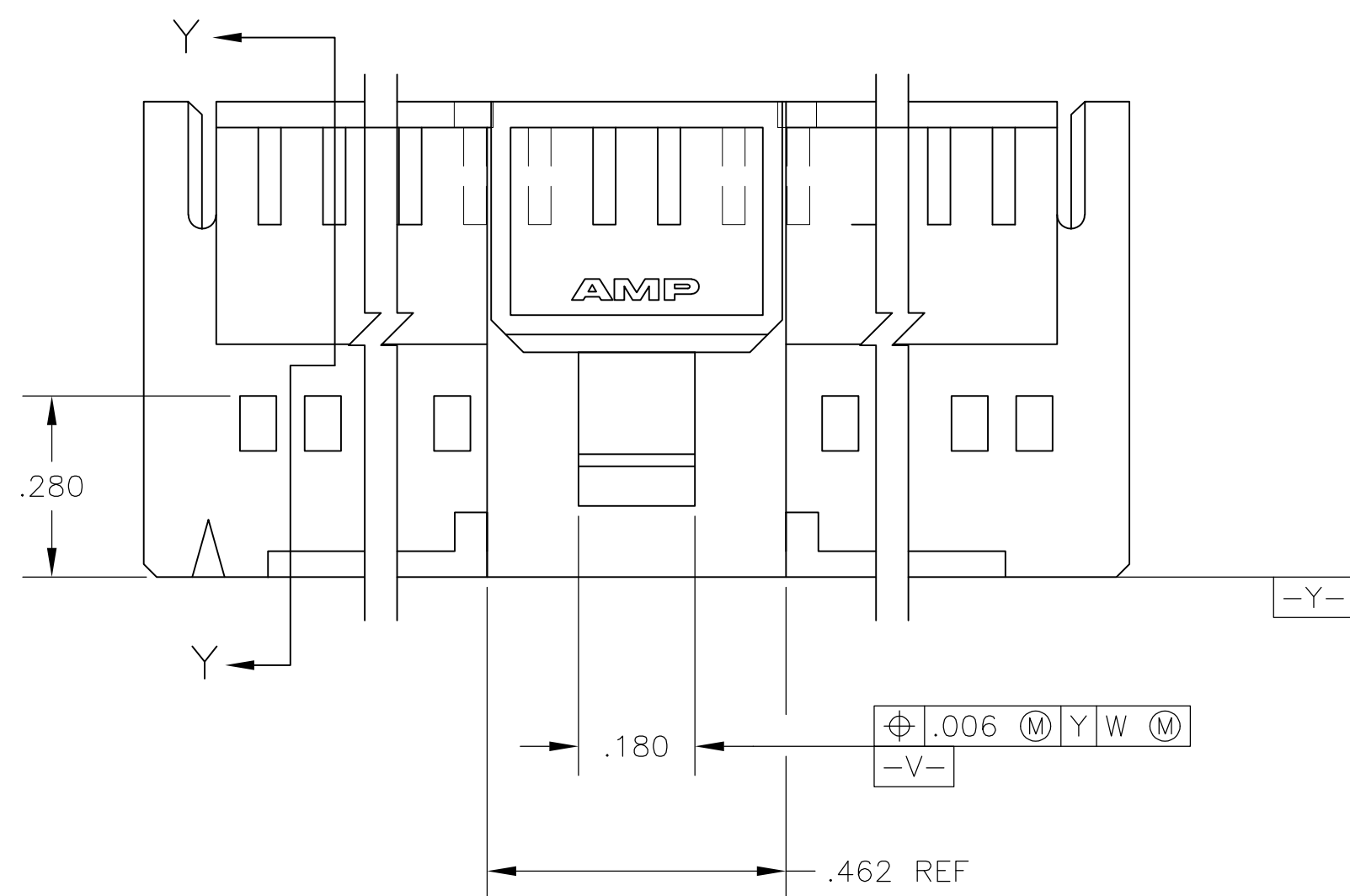
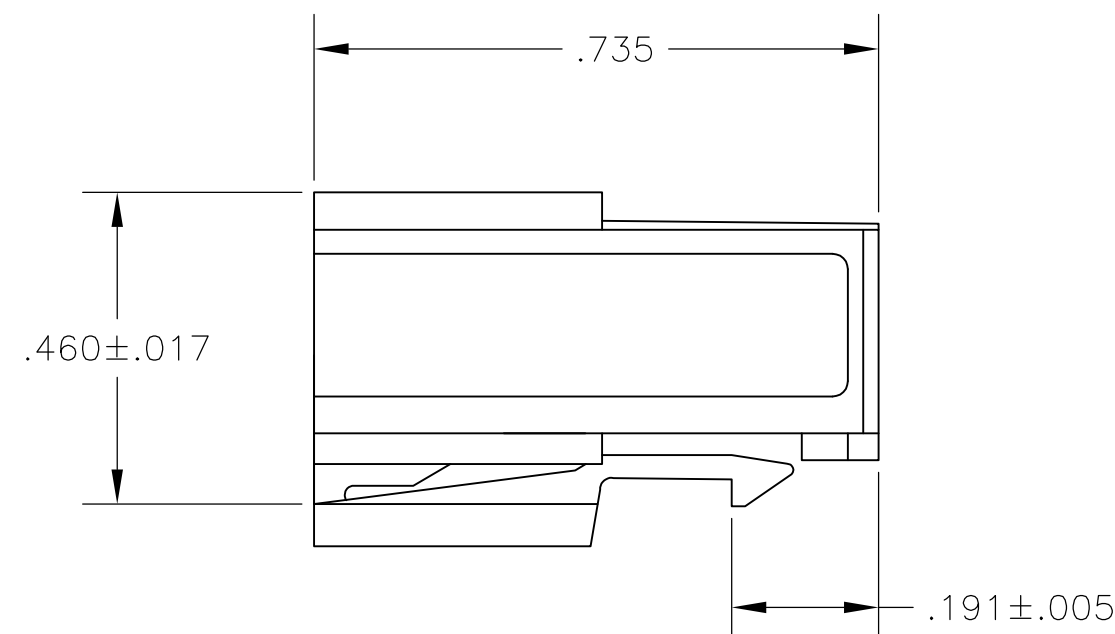
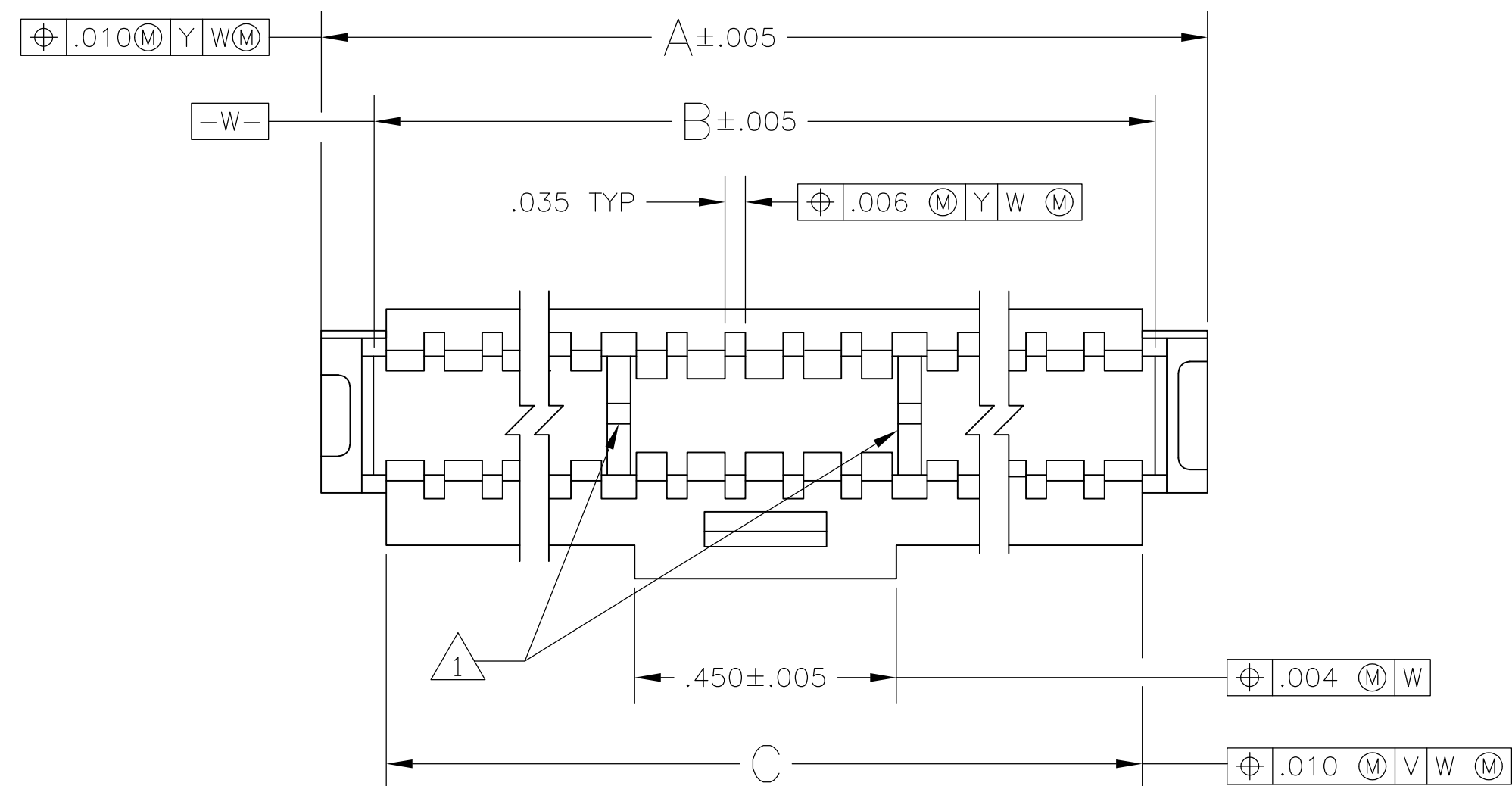




LOC	DIST	REVISIONS					
		P	LTR	DESCRIPTION	DATE	DWN	APVD
AD	00		L2	REVISED PER ECO-11-004917	11MAR11	RK	HMR



	2.460	2.505	2.685	2	50	1-104500-1
	1.960	2.005	2.085	2	40	1-104500-0
4 OBSOLETE	1.660	1.705	1.885	2	34	104500-9
	1.560	1.605	1.785	2	32	104500-8
OBSOLETE 4	1.460	1.505	1.685	2	30	104500-7
	1.360	1.405	1.585	2	28	104500-6
	1.260	1.305	1.485	2	26	104500-5
	1.160	1.205	1.385	2	24	104500-4
	1.060	1.105	1.285	2	22	104500-3
	.960	1.005	1.185	2	20	104500-2
4 OBSOLETE	.860	.905	1.085	2	18	104500-1
	C	B	A	NO OF RIBS	NO OF POSN	PART NUMBER

THIS DRAWING IS A CONTROLLED DOCUMENT.			OWN D. KEITZER	01DEC88	 TE Connectivity				
			CHK S. SHUEY	07DEC88					
DIMENSIONS: INCHES 	TOLERANCES UNLESS OTHERWISE SPECIFIED: D .010 H .010 ANGLES ± .010	APPR C. SINISI	14DEC88	NAME	COUPLING SHROUD, AMPMODUTE, DOUBLE ROW, .100X.100 CL				
								PRODUCT SPEC 108-25034	
								APPLICATION SPEC 114-25026	
MATERIAL FLAME RETARDANT THERMOPLASTIC COLOR-BLACK	FINISH —	WEIGHT —	SIZE CAGE CODE DRAWING NO A1 00779 C 104500		RESTRICTED TO —				
CUSTOMER DRAWING			SCALE 4:1 SHEET 1 OF 1 REV L2						

Mouser Electronics

Authorized Distributor

Click to View Pricing, Inventory, Delivery & Lifecycle Information:

[TE Connectivity:](#)

[1-104500-0](#)