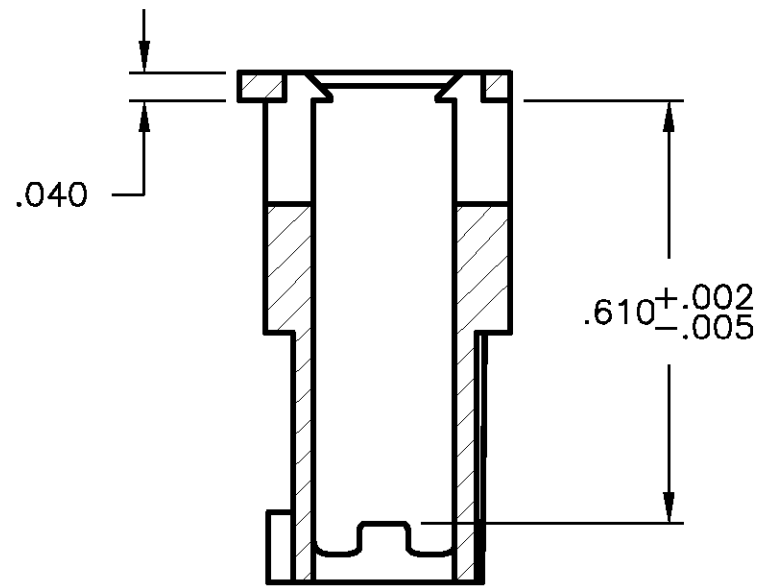
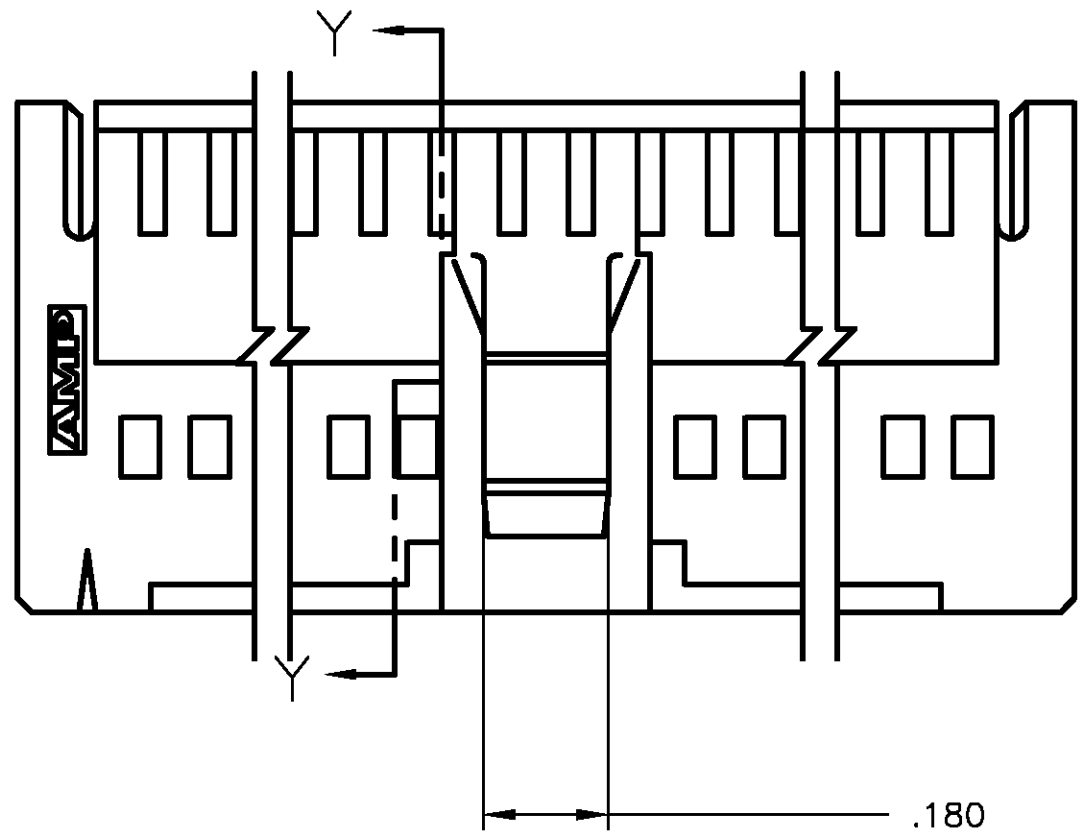
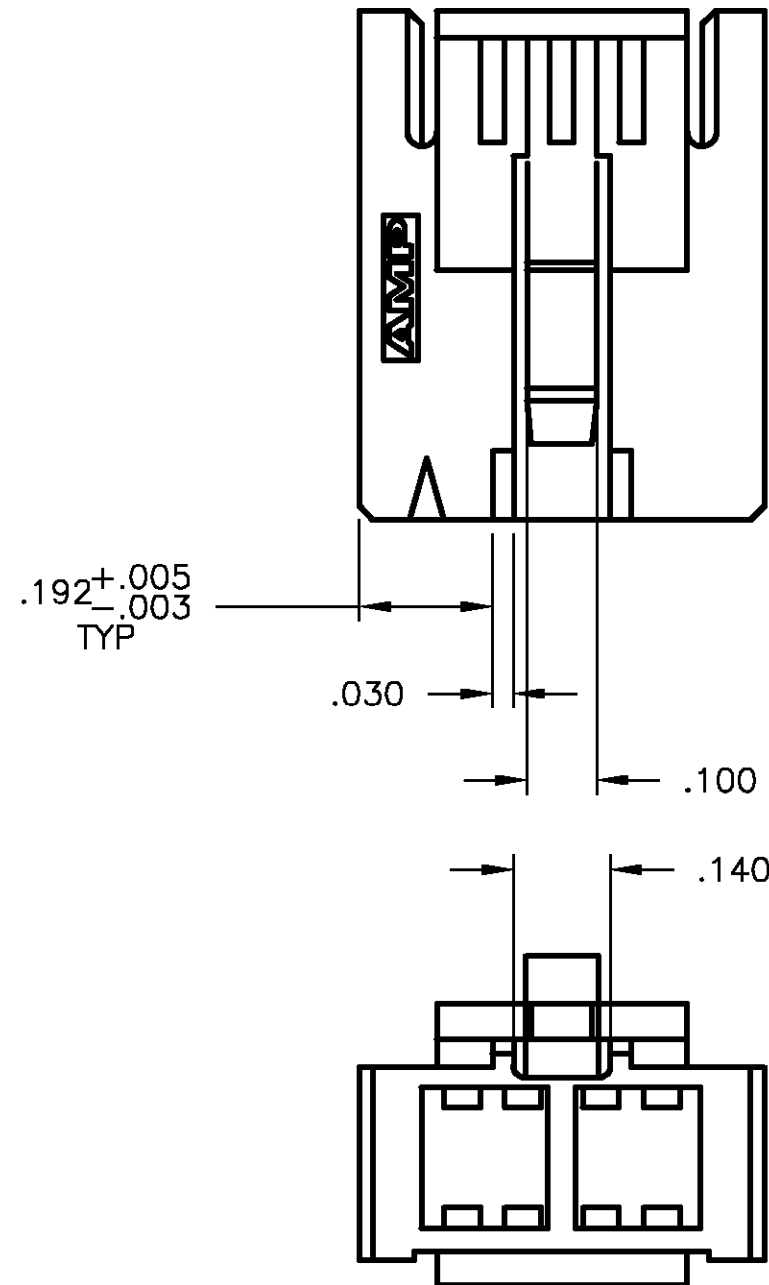


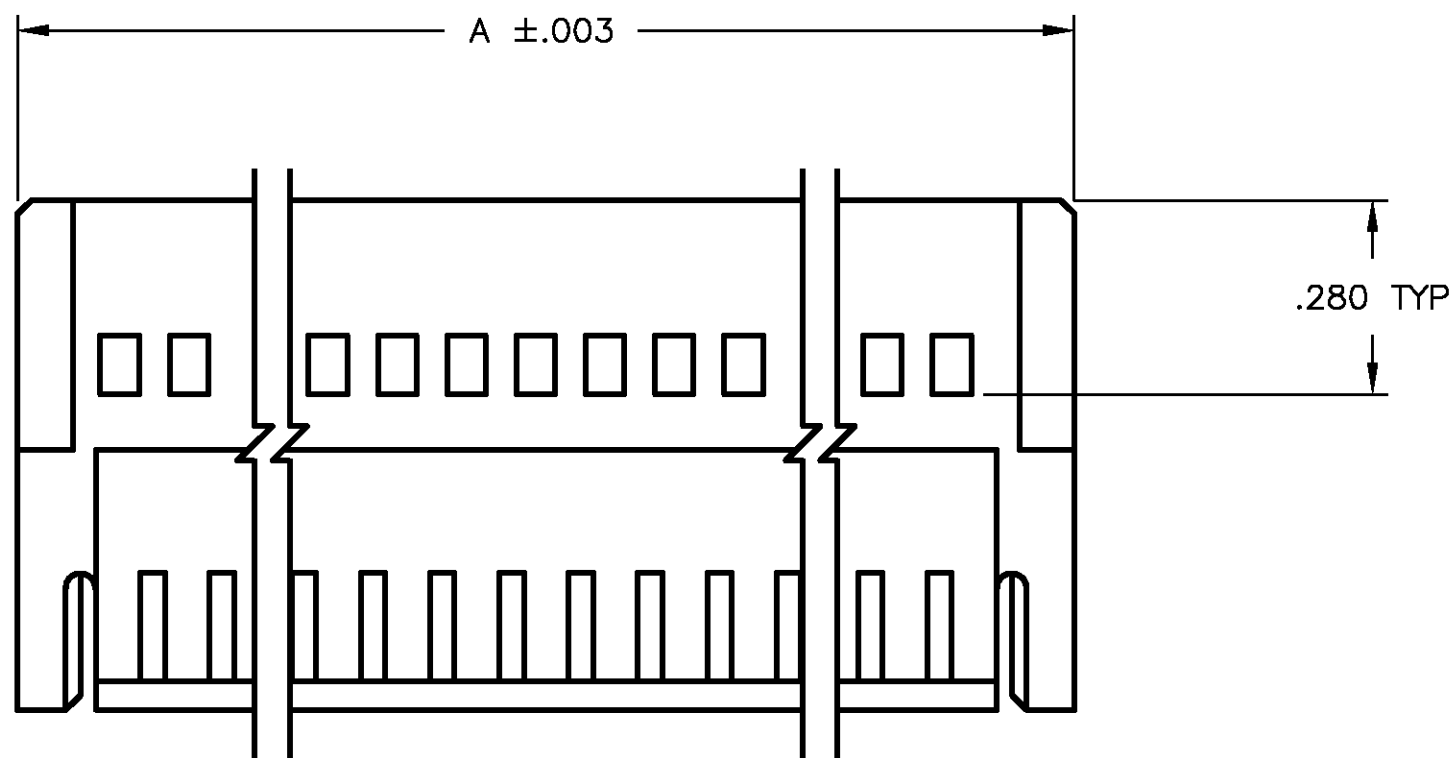
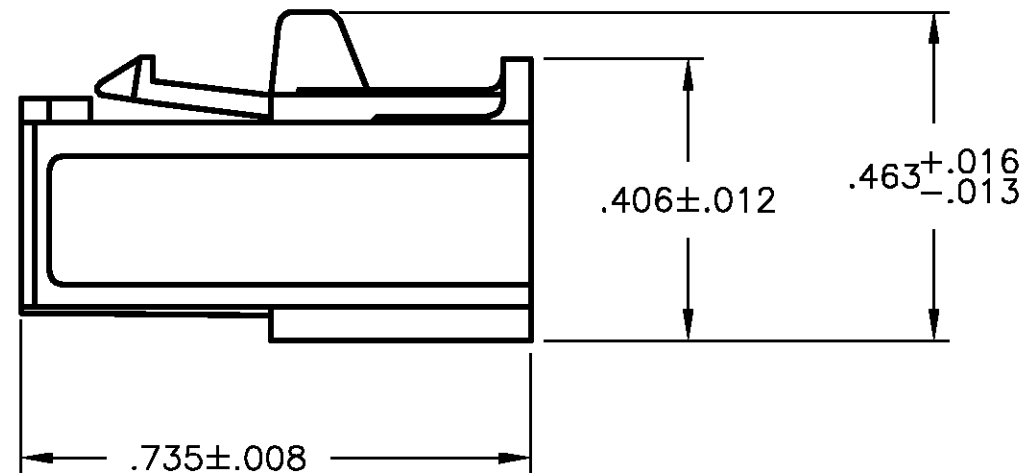
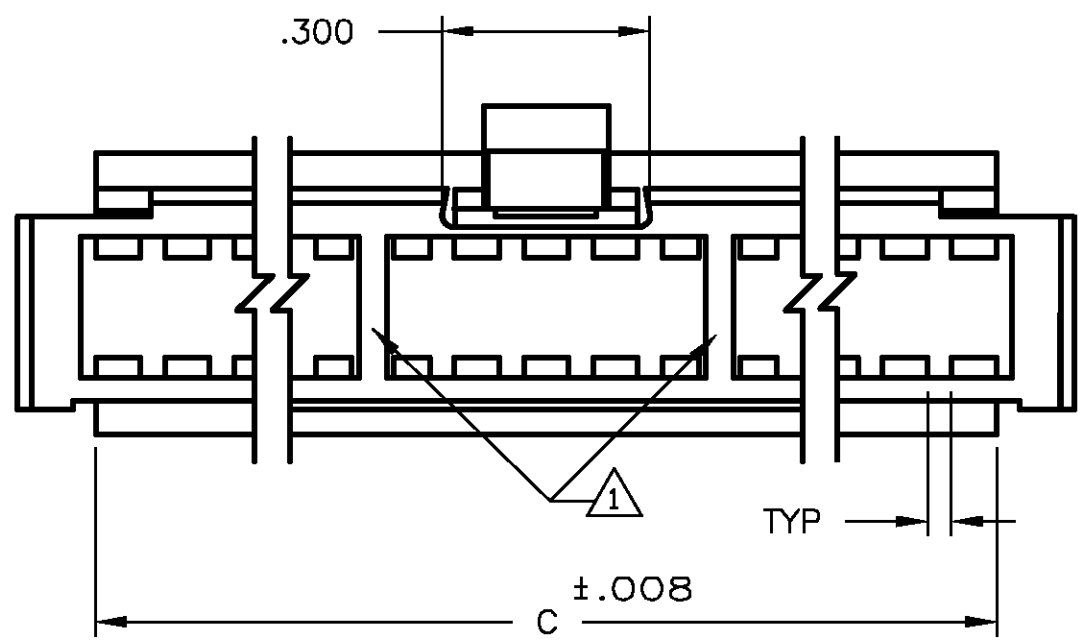
| LOG | DIST | REVISIONS | | | | |
|-----|------|-----------|----|----------------------|---------|-----|
| | | P | LR | DESCRIPTION | DATE | OWN |
| AD | 39 | M | | REV PER OG3C-0373-02 | 11OCT02 | RB |
| | | | | | | JG |



SECTION Y-Y



LATCH CONFIGURATION
FOR 6, 8 AND 10 POSN
(SEE TABLE)



- 1 SEE TABLE FOR RIB QTY
- 2 THIS COUPLING SHROUD IS TO BE USED WITH AMPMODU MTE® RECEPTACLE ASSEMBLIES WITH GUIDE RIBS THE NUMBER OF POSITIONS LISTED EQUALS THE TOTAL NUMBER OF POSITIONS WHICH CAN BE CONTAINED WITHIN THE COUPLING SHROUD
- 3 FLAME RETARDANT THERMOPLASTIC, COLOR-BLACK.
- 4 PRELIMINARY PART - NOT RELEASED FOR PRODUCTION.

| | | | | | |
|---------|---|-------|------------|-------------|------------|
| 4 | 1 | .260 | .485 | 6 | 1-103681-7 |
| | 2 | 2.460 | 2.685 | 50 | 1-103681-6 |
| | 2 | 1.960 | 2.185 | 40 | 1-103681-5 |
| | 2 | 1.660 | 1.885 | 34 | 1-103681-4 |
| | 2 | 1.560 | 1.785 | 32 | 1-103681-3 |
| | 2 | 1.460 | 1.685 | 30 | 1-103681-2 |
| | 2 | 1.360 | 1.585 | 28 | 1-103681-1 |
| | 2 | 1.260 | 1.485 | 26 | 1-103681-0 |
| | 2 | 1.160 | 1.385 | 24 | 103681-9 |
| | 2 | 1.060 | 1.285 | 22 | 103681-8 |
| | 2 | .960 | 1.185 | 20 | 103681-7 |
| | 2 | .860 | 1.085 | 18 | 103681-6 |
| | 1 | .760 | .985 | 16 | 103681-5 |
| | 1 | .660 | .885 | 14 | 103681-4 |
| | 1 | .560 | .785 | 12 | 103681-3 |
| | 1 | .460 | .685 | 10 | 103681-2 |
| | 1 | .360 | .585 | 8 | 103681-1 |
| RIB QTY | C | A | NO OF POSN | PART NUMBER | |

| | | | | |
|--|--|------------------------------|---|--|
| THIS DRAWING IS A CONTROLLED DOCUMENT. | | OWN H. MOLL 10-7-87 | AMP Tyco Electronics Corporation Harrisburg, PA 17105 | |
| DIMENSIONS: INCHES | | CHK P. de JONG 10-7-87 | NAME | |
| TOLERANCES UNLESS OTHERWISE SPECIFIED: | | PRODUCT SPEC 108-25034 | COUPLING SHROUD, AMPMODU MTE, .100X.100 C/L, DOUBLE ROW | |
| 0 PLG ± - | | APPLICATION SPEC 114-25026 | SIZE CAGE CODE DRAWING NO | |
| 1 PLG ± - | | WEIGHT - | A1 00779 103681 | |
| 2 PLG ± .005 | | RESTRICTED TO | | |
| 3 PLG ± - | | CUSTOMER DRAWING | | |
| 4 PLG ± - | | SCALE 4:1 SHEET 1 OF 1 REV M | | |
| ANGLES | | | | |
| FINISH | | | | |

Mouser Electronics

Authorized Distributor

Click to View Pricing, Inventory, Delivery & Lifecycle Information:

[TE Connectivity:](#)

[103681-1](#)