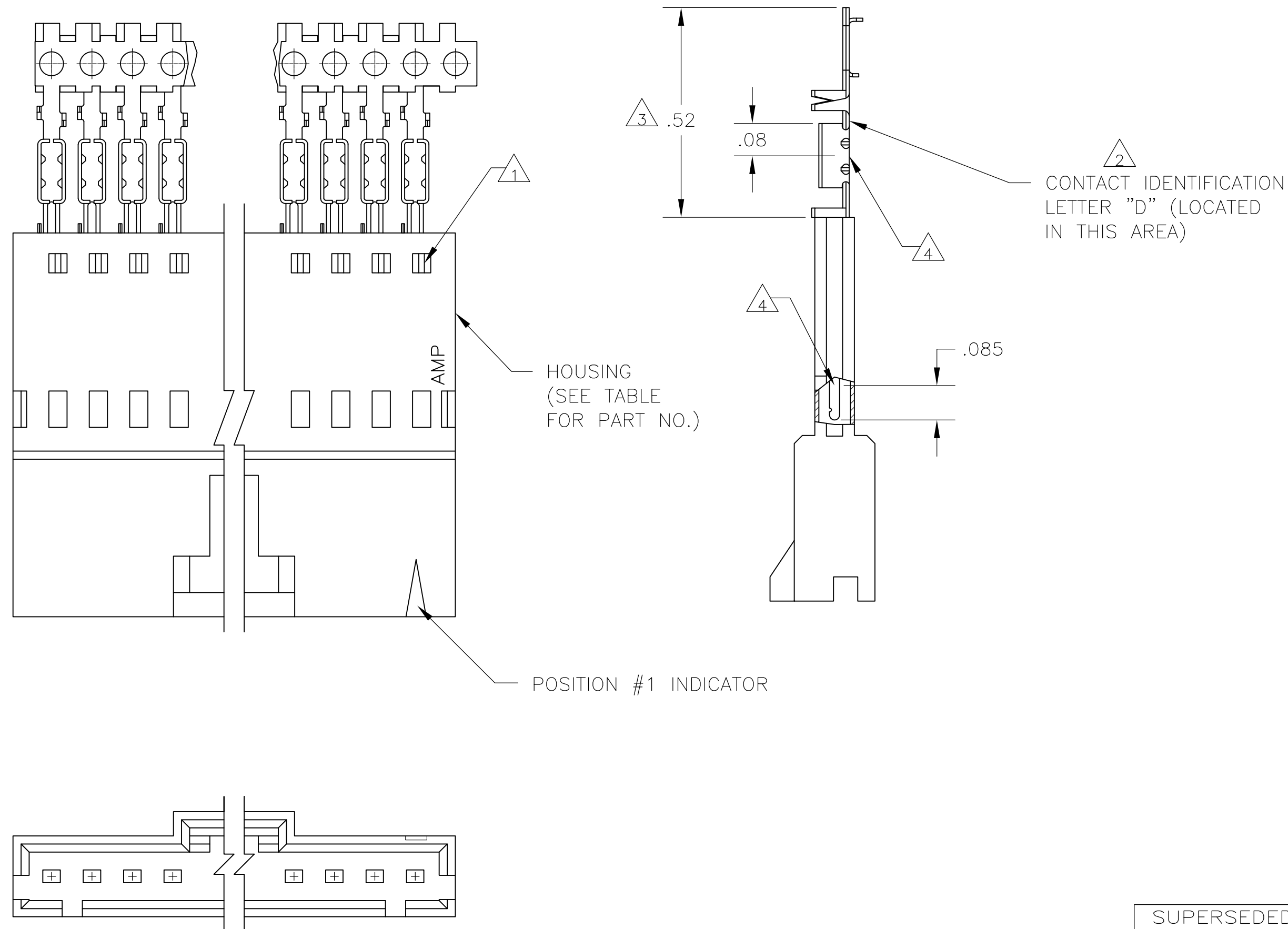


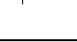


LOC	DIST	REVISIONS					
AD	00	P	LTR	DESCRIPTION	DATE	DWN	APVD
			P	EC 0G3C 0766 04	27DEC04	BSV	JLG
			P1	REVISED PER ECO-09-020932	26AUG09	KK	AEG



<div>9</div> <div>OBSOLETE</div>	8	2-103653-4	25	7-103660-4
	8	2-103653-3	24	7-103660-3
	8	2-103653-2	23	7-103660-2
	8	2-103653-1	22	7-103660-1
	8	2-103653-0	21	7-103660-0
<div>9</div> <div>OBSOLETE</div>	8	1-103653-9	20	6-103660-9
	8	1-103653-8	19	6-103660-8
	8	1-103653-7	18	6-103660-7
	8	1-103653-6	17	6-103660-6
<div>9</div> <div>OBSOLETE</div>	8	1-103653-5	16	6-103660-5
	8	1-103653-4	15	6-103660-4
<div>9</div> <div>OBSOLETE</div>	8	1-103653-3	14	6-103660-3
	8	1-103653-2	13	6-103660-2
<div>9</div> <div>OBSOLETE</div>	7	2-103653-4	25	2-103660-4
	7	2-103653-3	24	2-103660-3
	7	2-103653-2	23	2-103660-2
	7	2-103653-1	22	2-103660-1
	7	2-103653-0	21	2-103660-0
<div>9</div> <div>OBSOLETE</div>	7	1-103653-9	20	1-103660-9
	7	1-103653-8	19	1-103660-8
	7	1-103653-7	18	1-103660-7
	7	1-103653-6	17	1-103660-6
<div>9</div> <div>SUPERSEDED</div>	7	1-103653-5	16	1-103660-5
	7	1-103653-4	15	1-103660-4
	7	1-103653-3	14	1-103660-3
<div>9</div> <div>SUPERSEDED</div>	7	1-103653-2	13	1-103660-2
	7	1-103653-1	12	1-103660-1
BY 1-103945-1	7	1-103653-0	11	1-103660-0

- 1 CONTACTS ARE LATCHED INTO THE PRELOAD WINDOWS
- 2 USE WITH #22-#26 AWG WIRE SIZE, .054/.030 INSULATION DIAMETER, .015 MAXIMUM INSULATION THICKNESS
- 3 THE DIMENSION APPLIES WITH THE FORWARD PRELOAD STOP IN CONTACT WITH THE HOUSING SURFACE
- 4 POINT OF MEASUREMENT FOR PLATING THICKNESS
- 5 FOR STRIP ASSEMBLIES SEE PART NUMBER 103945
- 6 MATERIAL- HOUSING: FLAME RETARDANT THERMOPLASTIC, COLOR: BLACK PINS: PHOS. BRONZE
- 7 FINISH- PINS: .000015 GOLD IN THE CONTACT AREA, .000050-.000100 BRIGHT TIN-LEAD ON THE TERMINATION AREA, OVER .000050 NICKEL.
- 8 FINISH- PINS: .000015 GOLD IN THE CONTACT AREA, .000050-.000100 MATTE TIN ON THE TERMINATION AREA, OVER .000050 NICKEL.
- 9 OBSOLETE PARTS: OBSOLETE CIS STREAMLINING PER D.RENAUD/D.SINISI

THIS DRAWING IS A CONTROLLED DOCUMENT.		DWN R.BROWN	26JUL00	 Tyco Electronics Corporation Harrisburg, Pa 17105-3608	
		CHK K.WRIGHT	26JUL00		
DIMENSIONS: INCHES	TOLERANCES UNLESS OTHERWISE SPECIFIED:	APVD K.WRIGHT	26JUL00	NAME	
	0 PLC ± - 1 PLC ± - 2 PLC ± - 3 PLC ± - 4 PLC ± - ANGLES ± -	PRODUCT SPEC 108-25034	SHROUDED PIN ASSY, AMPMODU MTE, SINGLE ROW, .100 CL, POLARIZED, WITH LATCH WINDOWS, FOR #22-#26 AWG WIRE SIZE		
MATERIAL	FINISH	APPLICATION SPEC 114-25026	SIZE	CAGE CODE	DRAWING NO
	SEE TABLE	WEIGHT -	A2	00779	C-103660
CUSTOMER DRAWING			SCALE	SHEET	REV
			4:1	1 OF 1	P1

Mouser Electronics

Authorized Distributor

Click to View Pricing, Inventory, Delivery & Lifecycle Information:

[TE Connectivity:](#)

[1-103660-4](#)