

THIS DRAWING IS UNPUBLISHED.

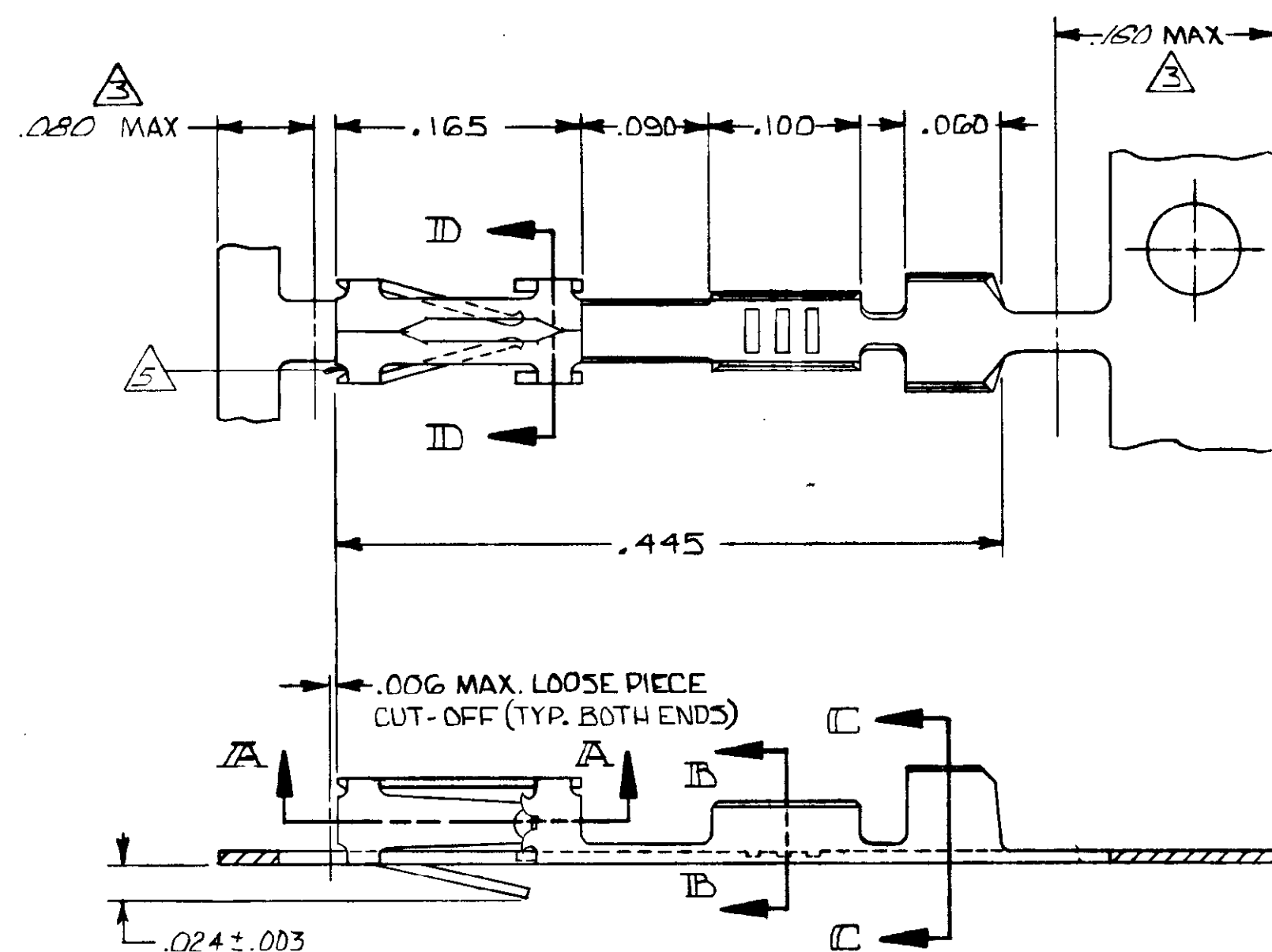
RELEASED FOR PUBLICATION

(C) COPYRIGHT

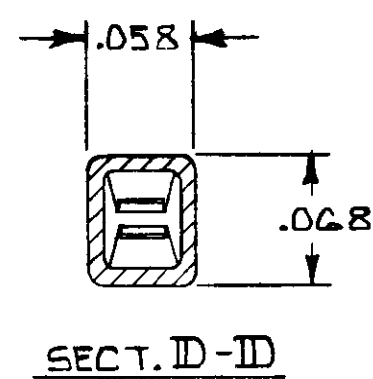
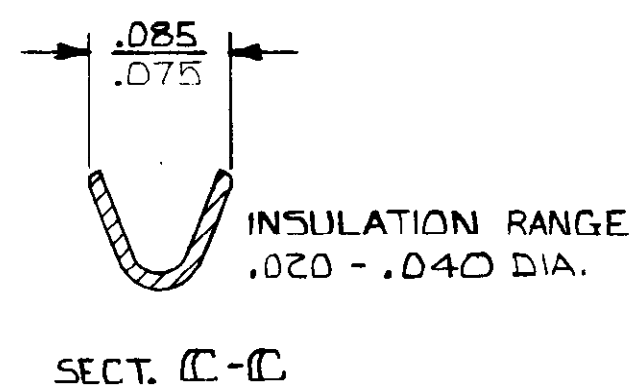
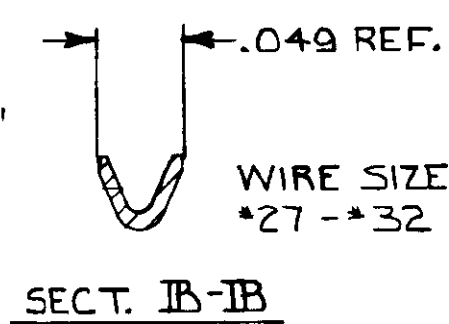
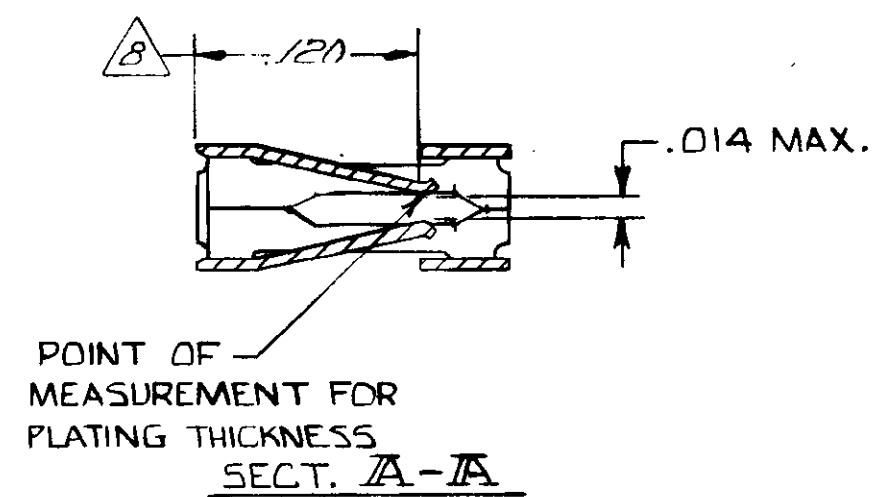
ALL RIGHTS RESERVED.

REVISIONS

| P | F | ZONE | LTR | DESCRIPTION | DATE | DWN | APPROVED |
|---|---|------|-----|---------------------------|-----------|-----|----------|
| | | | N | REVISED PER ECO-15-004633 | 30MAY2015 | NK | JO |



- 1 .00030 GOLD ON CONTACT AREA, GOLD FLASH ON REMAINDER, OVER .000050 NICKEL.
- 2 .00015 GOLD ON CONTACT AREA, GOLD FLASH ON THE REMAINDER, OVER .000050 NICKEL.
- 3 GOLD PLATING NOT REQUIRED IN THIS AREA.
- 4 .000100-.000200 BRIGHT TIN OVER .000030 NICKEL.
- 5 CUT OUTS ON BOX AT MANUFACTURER'S OPTION.
- 6 .000050 GOLD ON CONTACT AREA, GOLD FLASH ON THE REMAINDER, OVER .000050 NICKEL.
- 7 .000015 GOLD ON CONTACT AREA, .000050 NICKEL OVER THE ENTIRE TERMINAL.
- 8 POINT OF MEASUREMENT FOR PLATING THICKNESS (INSIDE BEAMS).
- 9 OBSOLETE PART NUMBER.
- 10 SUPERSEDED BY 102917-2.
- 11 OBSOLETE PARTS: OBSOLETE CIS STREAMLINING PER D.RENAUD/D.SINISI



| | | |
|----------------------|------------|------------|
| OBSOLETE | 1-102917-4 | 1-102917-3 |
| OBSOLETE | 1-102917-2 | 1-102917-1 |
| | 102917-6 | 102917-5 |
| OBSOLETE | 102917-4 | 102917-3 |
| | 102917-2 | 102917-1 |
| LOOSE PIECE PART NO. | FINISH | PART NO |

| | | | | |
|---|-----------------------------|---|------------------|----------------------|
| UNLESS OTHERWISE SPECIFIED DIMENSIONS ARE IN INCHES. TOLERANCES ON: DECIMALS ± .005 ANGLES | CONTRACT NO | TE Connectivity | | |
| | DR R. A. Cook 3/15/82 | NAME | | |
| MATERIAL CU-NI-SI | CHR R. A. Cook 3/15/82 | CONTACT, FEMALE, MOD IV, CRIMP SNAP-IN | | |
| | APPD R. A. Cook 3/15/82 | REV | | |
| FINISH SEE TABLE | APPD M. Y. Ingot 3/26/82 | SIZE C | FSCM NO 00779 | DRAWING NO 102917 |
| | DSGN APPD | SCALE | SHEET 1 OF 1 | REV N |
| OTHER APPD | CUSTOMER DRAWING | | | |

Mouser Electronics

Authorized Distributor

Click to View Pricing, Inventory, Delivery & Lifecycle Information:

[TE Connectivity:](#)

[102917-6](#)