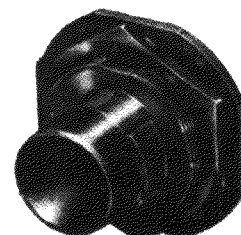
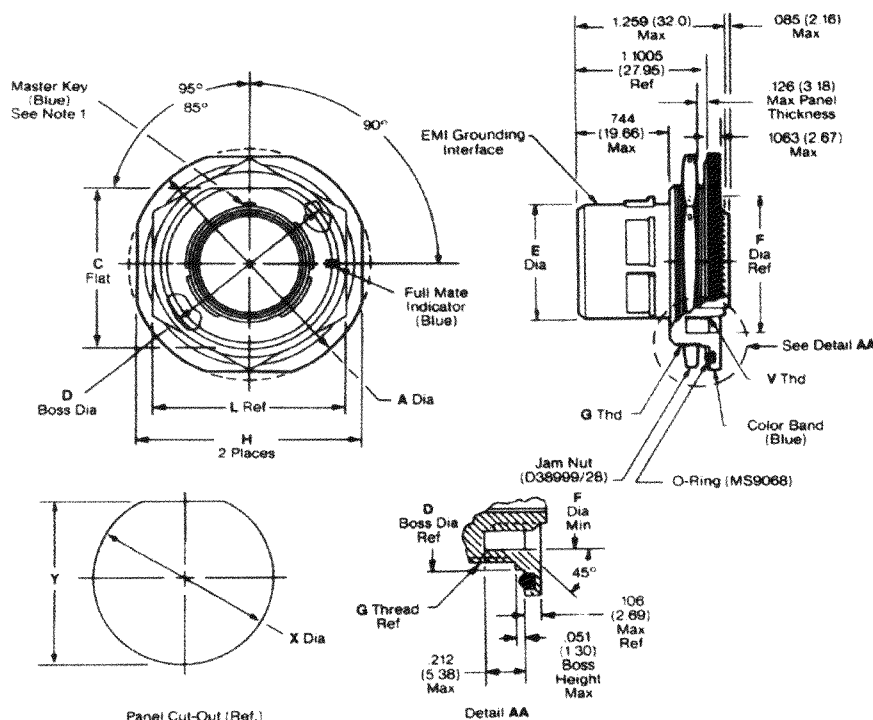


# Jam Nut Receptacle



Shell Size	A Dia. Max.		C Flat Max.		D Dia. Max.		E Dia. Max.		F Dia. Min.		G Thd. Metric	H Flat Max.	
	In.	mm	In.	mm	In.	mm	In.	mm	In.	mm		In.	mm
11	1.520	38.61	.942	23.93	1.000	25.40	.509	12.93	.794	20.17	M25x1.0-6g-0.1R	1.394	35.41
13	1.642	41.71	1.066	27.08	1.125	28.58	.634	16.10	.918	23.32	M28x1.0-6g-0.1R	1.520	38.61
15	1.768	44.91	1.191	30.25	1.250	31.75	.759	19.28	1.036	26.31	M31x1.0-6g-0.1R	1.642	41.71
17	1.957	49.71	1.321	33.55	1.375	34.93	.885	22.48	1.172	29.77	M34x1.0-6g-0.1R	1.799	45.69
19	2.035	51.69	1.441	36.80	1.500	38.10	1.009	25.68	1.286	32.66	M38x1.0-6g-0.1R	1.909	48.49
21	2.157	54.79	1.566	39.78	1.625	41.28	1.134	28.80	1.412	35.86	M41x1.0-6g-0.1R	2.035	51.69
23	2.283	57.89	1.691	42.95	1.750	44.45	1.259	31.90	1.536	39.01	M44x1.0-6g-0.1R	2.157	54.8
25	2.409	61.19	1.816	46.13	1.875	47.63	1.384	35.15	1.662	42.21	M47x1.0-6g-0.1R	2.283	58.0

Shell Size	L Ref.		V Thd. Metric	X Dia. Bsc.		Y Bsc.		Recommended Packing (O Ring)
	In.	mm		In.	mm	In.	mm	
11	1.260	32.0	M15x1.0-6g-0.1R	1.017	25.83	.995	24.25	MS9068-24
13	1.417	36.0	M18x1.0-6g-0.1R	1.144	29.06	1.084	27.53	MS9068-26
15	1.614	41.0	M22x1.0-6g-0.1R	1.268	32.23	1.208	30.69	MS9068-28
17	1.614	41.0	M25x1.0-6g-0.1R	1.394	35.41	1.333	33.86	MS9068-29
19	1.811	46.0	M28x1.0-6g-0.1R	1.517	38.53	1.459	37.06	MS9068-30
21	1.968	50.0	M31x1.0-6g-0.1R	1.644	41.76	1.576	40.03	MS9068-31
23	1.968	50.0	M34x1.0-6g-0.1R	1.769	44.93	1.701	43.21	MS9068-32
25	2.165	55.0	M37x1.0-6g-0.1R	1.894	48.10	1.826	46.36	MS9068-33

This information is for reference only. Consult factory for envelope drawings, updated specifications, and additions to the product line.



# Mouser Electronics

Authorized Distributor

Click to View Pricing, Inventory, Delivery & Lifecycle Information:

## TE Connectivity:

[D38999/44WH55PD](#) [D38999/44FH35SC](#) [D38999/44WH53PB](#) [D38999/44WH53PN](#) [D38999/44FH21PB](#)  
[D38999/44FH21PD](#) [D38999/44WH53PD](#) [D38999/44WH53PA](#) [D38999/44WH53PC](#) [D38999/44FH21PC](#)  
[D38999/44WH21SA](#) [D38999/44WH21SC](#) [D38999/44WH21SD](#) [D38999/44WH21SB](#) [D38999/44WH53SD](#)  
[D38999/44FH21SD](#) [D38999/44WH53SB](#) [D38999/44FH21SB](#) [D38999/44FH21SC](#) [D38999/44WH53SC](#)  
[D38999/44WH53SA](#) [D38999/44FH53PA](#) [D38999/44FH53PC](#) [D38999/44FH53PD](#) [D38999/44FH53PB](#)  
[D38999/44WH21PD](#) [D38999/44WH21PB](#) [D38999/44WH21PN](#) [D38999/44WH21PC](#) [D38999/44WH21PA](#)  
[D38999/44FH35PB](#) [D38999/44FH35PC](#) [D38999/44WH35SC](#) [D38999/44WH35SD](#) [D38999/44WH35SB](#)  
[D38999/44WH35PD](#) [D38999/44WH35PC](#) [D38999/44WH35PA](#) [D38999/44FH53SC](#) [D38999/44FH53SA](#)  
[D38999/44FH53SB](#) [D38999/44FH53SD](#) [D38999/44FH55PC](#) [D38999/44FH55PD](#) [D38999/44FH55PB](#)  
[D38999/44FH55SB](#) [D38999/44FH55SN](#) [DIV44H11-35PN](#)