

4		3		2		1		
THIS DRAWING IS UNPUBLISHED.				RELEASED FOR PUBLICATION				
© COPYRIGHT - By -				ALL RIGHTS RESERVED.				
LOC G		DIST 14		REVISIONS				
P		LTR		DESCRIPTION		DATE	DWN	APVD
		AA2		REVISED PER ECO-11-020114		04JAN12	KH	DR

SLEEVE

BODY

6.73 ±0.13 DIA
[.265 ±.005]
(FOR 1/4 STUD)

11.91
[.469]

0.79 MIN
[.031]

11.10 MIN
[.437]

21.36 MAX
[.841]

27.38 MAX
[1.078]

1

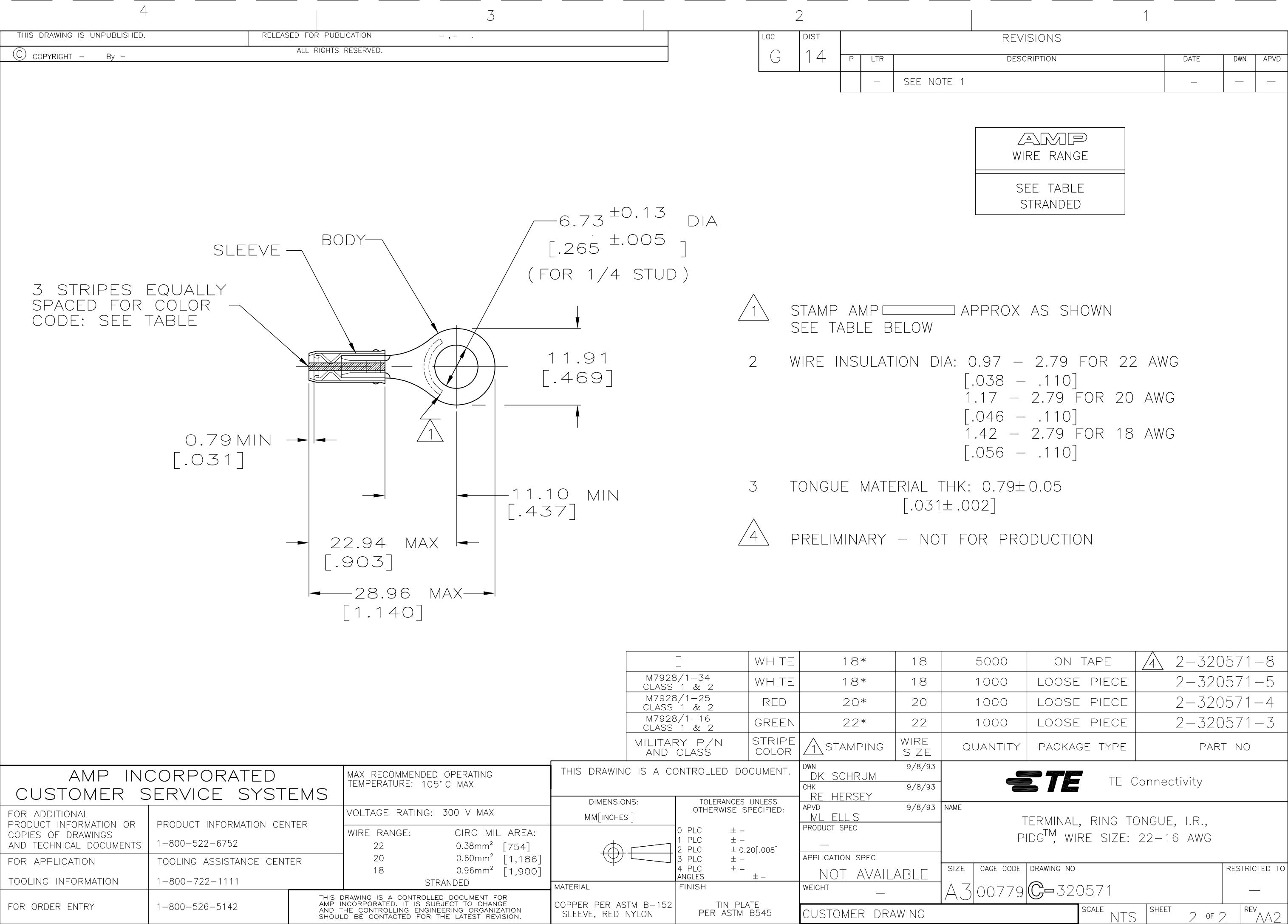
STAMP AMP 22-18* APPROX AS SHOWN
22-16 TERMINALS ARE STAMPED 22-18 IN
ACCORDANCE WITH MILITARY SPEC SAE AS7928
COMMERCIAL WIRE RANGE IS 22-16

2 WIRE INSULATION DIA: 2.03 - 3.18
[.080 - .125]

3 TONGUE MATERIAL THK: 0.79±0.05
[.031±.002]

-		100	LOOSE PIECE, BOX	8-320571-1
MS25036-150 CLASS 2		5000	ON TAPE, REEL	2-320571-2
MS25036-150 CLASS 1 & 2		1000	LOOSE PIECE	320571
MILITARY P/N AND CLASS		QUANTITY	PACKAGE TYPE	PART NO

AMP INCORPORATED CUSTOMER SERVICE SYSTEMS		MAX RECOMMENDED OPERATING TEMPERATURE: 105° C MAX		THIS DRAWING IS A CONTROLLED DOCUMENT.		DWN DK SCHRUM 9/8/93		TE Connectivity	
FOR ADDITIONAL PRODUCT INFORMATION OR COPIES OF DRAWINGS AND TECHNICAL DOCUMENTS		PRODUCT INFORMATION CENTER 1-800-522-6752		DIMENSIONS: INCHES		CHK RE HERSEY 9/8/93			
FOR APPLICATION TOOLING INFORMATION		TOOLING ASSISTANCE CENTER 1-800-722-1111		VOLTAGE RATING: 300 V MAX		APVD ML ELLIS 9/8/93		NAME	
FOR ORDER ENTRY 1-800-526-5142		THIS DRAWING IS A CONTROLLED DOCUMENT FOR AMP INCORPORATED. IT IS SUBJECT TO CHANGE AND THE CONTROLLING ENGINEERING ORGANIZATION SHOULD BE CONTACTED FOR THE LATEST REVISION.		CIRCULAR MIL AREA: 0.26-1.65mm² [509-3,260] CIR MILS SOLID OR STRANDED		TOLERANCES UNLESS OTHERWISE SPECIFIED: 0 PLC ± - 1 PLC ± - 2 PLC ± 0.20[.008] 3 PLC ± - 4 PLC ± - ANGLES ± -		PRODUCT SPEC UL 486A	
				MATERIAL COPPER PER ASTM B-152 SLEEVE, RED NYLON		FINISH TIN PLATE PER ASTM B545		APPLICATION SPEC NOT AVAILABLE	
						WEIGHT -		RESTRICTED TO	
						CUSTOMER DRAWING		SCALE NTS	
						SIZE A3		CAGE CODE 00779	
						DRAWING NO C-320571		SHEET 1 OF 2	
						REV AA2			



Mouser Electronics

Authorized Distributor

Click to View Pricing, Inventory, Delivery & Lifecycle Information:

[TE Connectivity:](#)

[M7928/1-16](#) [M7928/1-25](#)