

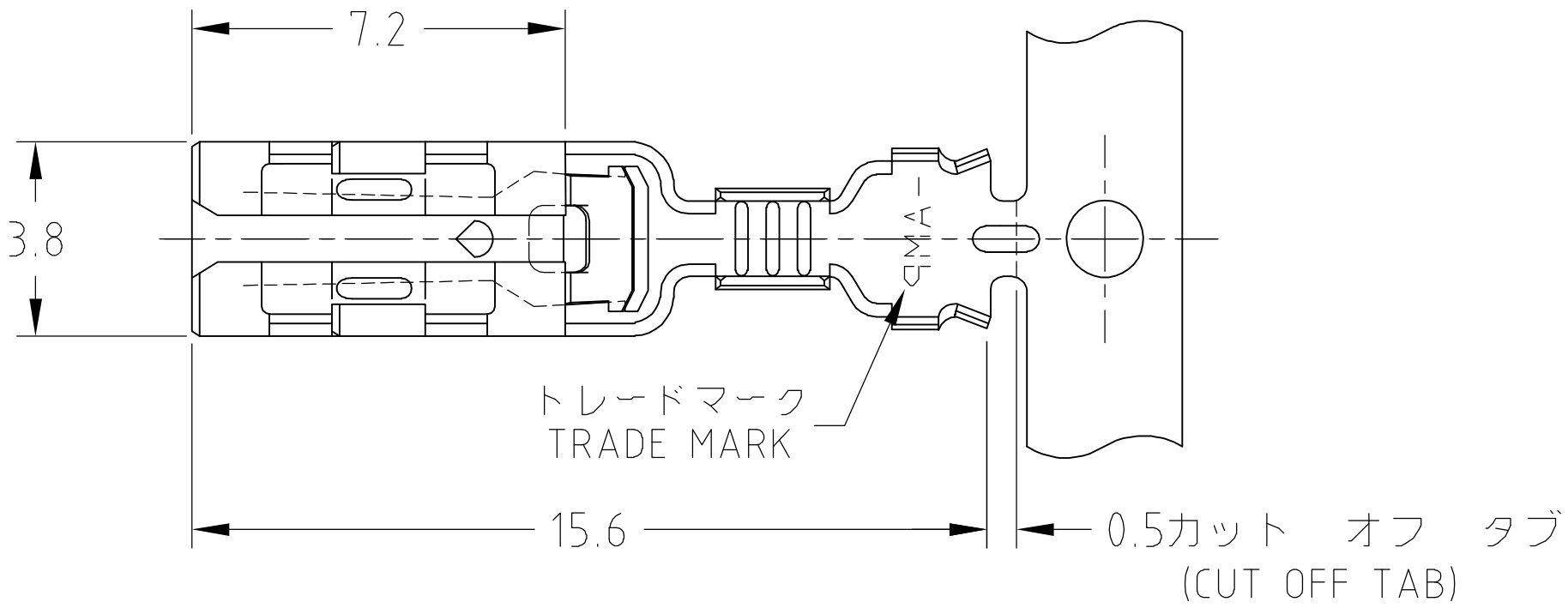
THIS DRAWING IS UNPUBLISHED.

RELEASED FOR PUBLICATION

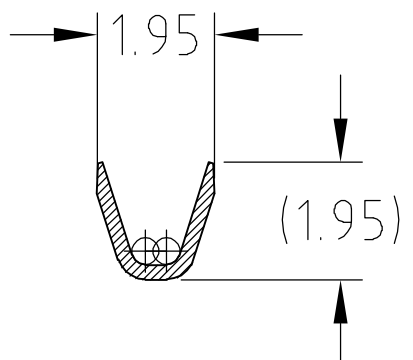
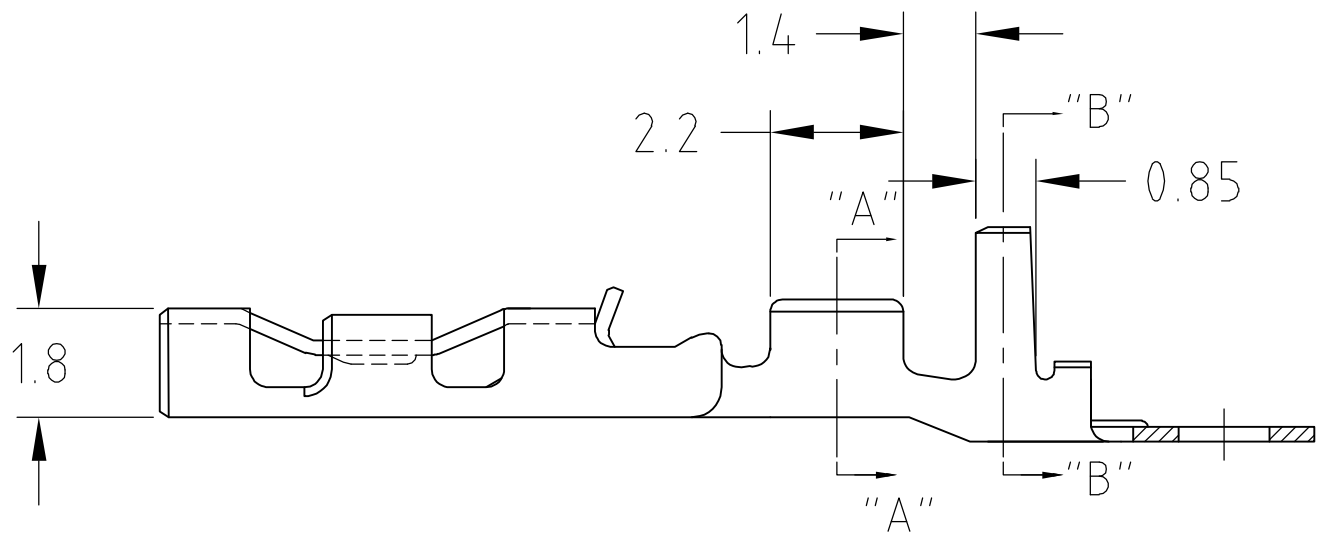
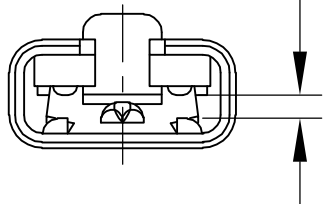
ALL RIGHTS RESERVED.

© COPYRIGHT BY TYCO ELECTRONICS CORPORATION.

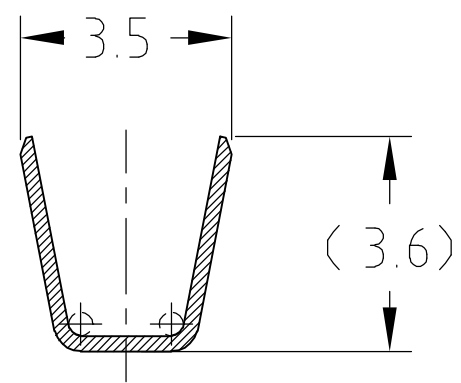
LOC	DIST	REVISIONS			
J	—	P	LTR	DESCRIPTION	DATE
		C		REDRAWN WITH CHANGE	19JUL.'05



110シリーズ・タブにカン合
MATING FOR 110 SERIES TAB



断面 "A" - "A"
SECT



断面 "B" - "B"
SECT

THIS DRAWING IS A CONTROLLED DOCUMENT.	
DIMENSIONS: 単位: 耗 mm	TOLERANCES UNLESS OTHERWISE SPECIFIED: 一般公差 10 ≥ ± 0.2
	30 ≥ >10 ± 0.25
	100 ≥ >30 ± 0.3
MATERIAL 材料	FINISH 仕上
SEE TABLE	

WIRE RANGE 抱合電線断面積		INSULATION DIA 被覆外径	
0.14~0.34mm ² (AWG#26~#22)		1.3~2.0 DIA	
DWN J.SATO	19JUL2005	Tyco Electronics AMP K.K. Kawasaki, Japan	
CHK N.YAMASAKI	19JUL2005		
APVD N.YAMASAKI	19JUL2005	NAME 名称 110 SERIES POSITIVE LOCK EX-III REC CONTACT(DOUBLE LOCK TYPE)	
PRODUCT SPEC 製品規格 108-5530			
APPLICATION SPEC 取付適用規格 114-5229		SIZE A3	CAGE CODE 00779
WEIGHT		DRAWING NO 番号 C-353249	RESTRICTED TO —
CUSTOMER DRAWING		SCALE 尺度 8:1	SHEET 1 OF 1
		REV C	

Mouser Electronics

Authorized Distributor

Click to View Pricing, Inventory, Delivery & Lifecycle Information:

[TE Connectivity:](#)

[353249-2](#) [353249-2 \(Mouser Reel\)](#)