

THIS DRAWING IS UNPUBLISHED.

RELEASED FOR PUBLICATION

20

© COPYRIGHT 20

BY TYCO ELECTRONICS CORPORATION. ALL RIGHTS RESERVED.

LOC

DIST

REVISIONS

変更

P

LTR

DESCRIPTION

DATE

DWN

APVD

B

REVISED

18JUN2009

R.K

N.Y

C

REVISED

06JAN2010

R.K

N.Y

SCALE 1:1

 $2Xn=A$ CAVITY MARK  
(ALPHABET:CAPITAL LETTER)

3.3

CIRCUIT NO

LOGO MARK

SERIES CODE

KEYING MARK

ROW ID

12.45

11.3

8.6

9.4

9

B

 $2Xn=A$ 

2

3.3

1.6

20POS(X-KEY) : \*-2040555-0



1. 材料: ガラス入り熱可塑性ポリエステル樹脂(94V-0), 色: 黒以外

2. 文字の形状、大きさ、および位置については、大略を示すものであり、  
詳細を示すものではありません。1. MATERIAL: GLASS FILLED THERMO PLASTIC POLYESTER(94V-0)  
COLOR: EXCLUDING BLACK2. THE SHAPE, SIZE AND POSITION OF THE CHARACTER  
SHOW THE OUTLINE.  
THEY DON'T SHOW DETAILS.

18	X	8	16.0	18.9	20.6	8.1	YELLOW	3-2040555-9
18	X	8	16.0	18.9	20.6	8.1	NATURAL	1-2040555-9
20	X	9	18.0	20.9	22.6	6.8	RED	5-2040555-0
20	X	9	18.0	20.9	22.6	6.8	YELLOW	3-2040555-0
20	X	9	18.0	20.9	22.6	6.8	NATURAL	1-2040555-0
POS	KEY	n	A	B	C	D	COLOR	PART NO

THIS DRAWING IS A CONTROLLED DOCUMENT FOR TYCO ELECTRONICS CORPORATION  
IT IS SUBJECT TO CHANGE AND THE CONTROLLING ENGINEERING ORGANIZATION  
SHOULD BE CONTACTED FOR THE LATEST REVISION.DIMENSIONS:  
単位: 耗  
mmTOLERANCES UNLESS  
OTHERWISE SPECIFIED:  
一般公差  $\pm 0.3, \pm 5^\circ$ 0-PLC  $\pm$   
1-PLC  $\pm 0.1$   
2-PLC  $\pm 0.02$   
3-PLC  $\pm 0.005$   
4-PLC  $\pm 0.0005$   
ANGLES  $\pm$ MATERIAL  
材料FINISH  
仕上

DWN 15JUL2008

M. MAEBASHI

CHK 15JUL2008

T. KUDO

APVD 15JUL2008

S. MANABE

PRODUCT SPEC  
製品規格  
108-78268, 78298APPLICATION SPEC  
取付適用規格  
114-5377

WEIGHT

CUSTOMER DRAWING

Tyco Electronics Corporation  
Kawasaki, Japan

NAME

名称

DYNAMIC D1100D 2.0mmPITCH  
REC HSG COLOR  
4-20POS

SIZE

寸法

CAGE CODE

DRAWING NO

番号

A3

00779

C-2040555

RESTRICTED TO

-

SCALE  
尺度

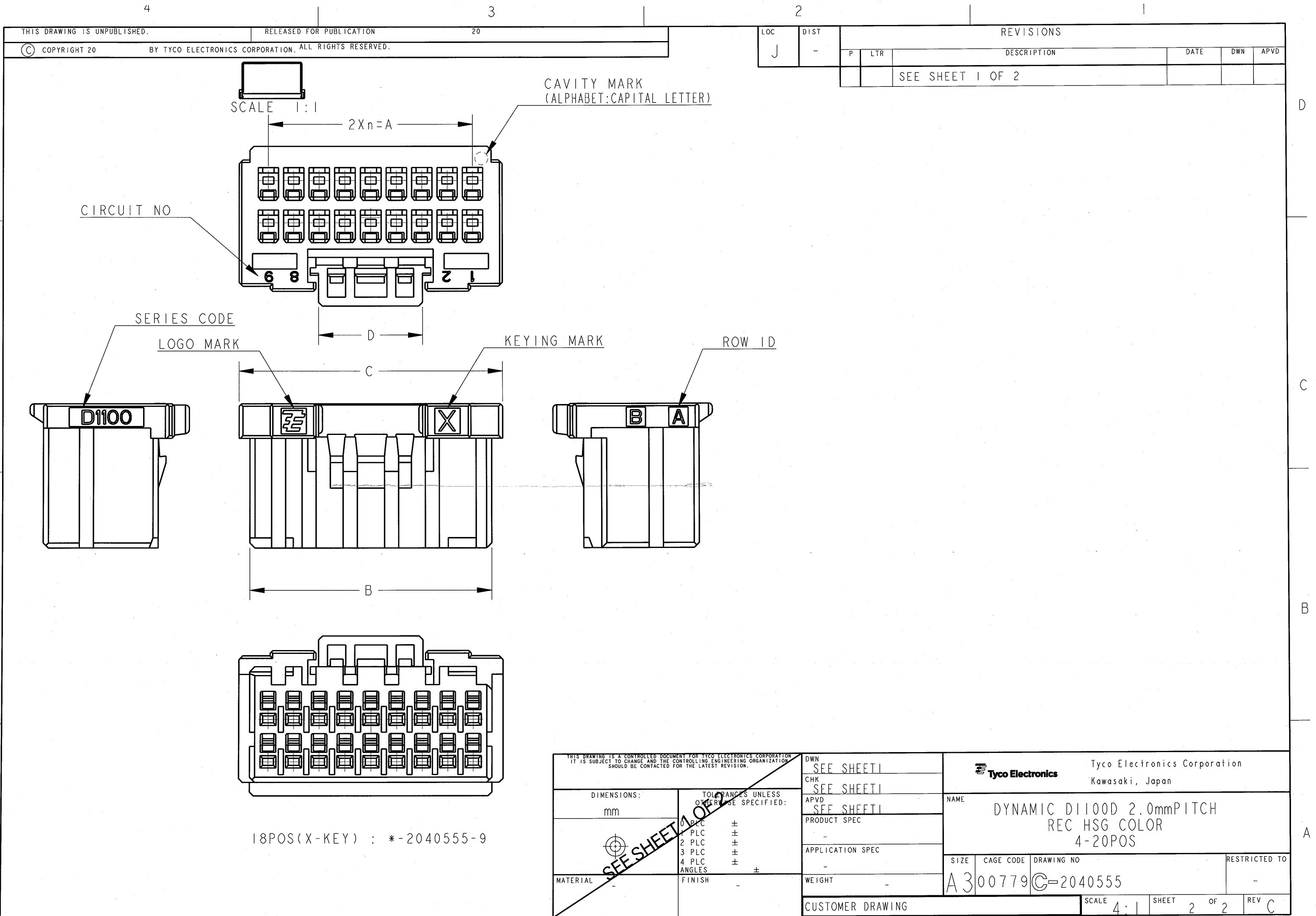
4:1

SHEET

1 OF 2

REV

C



# Mouser Electronics

Authorized Distributor

Click to View Pricing, Inventory, Delivery & Lifecycle Information:

[TE Connectivity:](#)

[3-2040555-9](#)