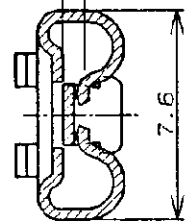
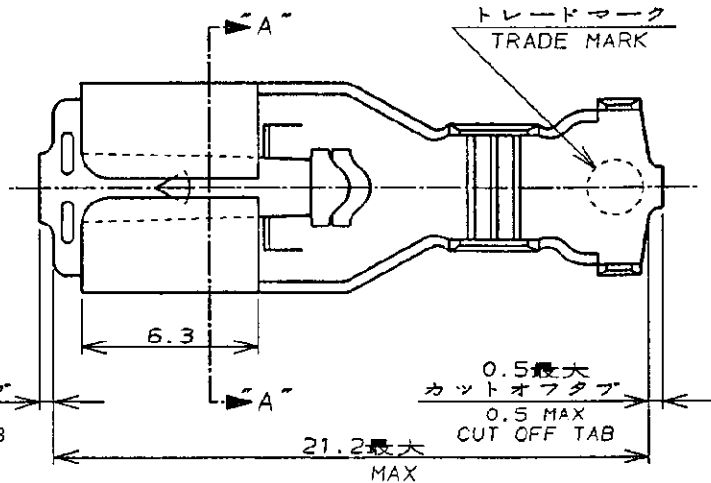
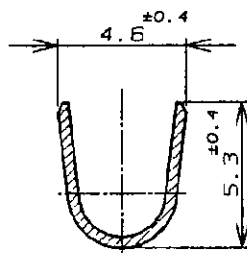
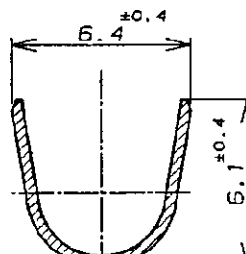
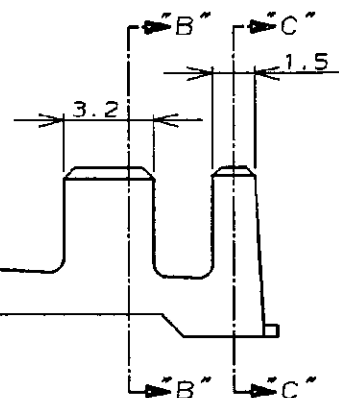


NUMBER 179975

三 角 法 (3rd ANGLE PROJECTION)

METRIC

0.8厚タブと嵌合
MATE WITH 0.8t TAB断面 "A" - "A"
SECT0.5最大
カットオフタブ
0.5 MAX
CUT OFF TABトレードマーク
TRADE MARK0.5最大
カットオフタブ
0.5 MAX
CUT OFF TAB断面 "B" - "B"
SECT断面 "C" - "C"
SECT

注記:

1. 製品規格 : 108-5437
2. 取付通用規格 : 114-5195
3. 適用ハウジング : 179970-1
4. 取扱説明書 : 411-5691

NOTES:

1. PRODUCT SPEC : 108-5437
2. APPLICATION SPEC : 114-5195
3. APPLICABLE HOUSING P/N : 179970-1
4. INSTRUCTION SHEET : 411-5691

単位: mm DIMENSIONS IN MM. DO NOT SCALE PRINT

PRINT DIST

				錫めっき黄銅 (PRE TINNED BRASS)		179975-1	
バラ端子型番 (L/P No.)				材料 (MATERIAL)		型番 (P/N)	
Copyright ©1994 AMP (Japan), LTD. ALL RIGHTS RESERVED.				Copyright ©1994 AMP (Japan), LTD. ALL RIGHTS RESERVED.		Tyco Electronics Corporation Kawasaki, Japan	
一般公差 (GENERAL TOLERANCE)				絶縁外径 (INSULATION DIA.)		仕上 (FINISH)	
10W: ±0.2 10W以下: ±0.25 30W以上: ±0.3 角 度: ±3°				3.0~4.3 mmφ		---	
C 変更 (ECR-07-017357) J.S. S.M. 24 JUL '94				材料 (MATERIAL)		表参照 (SEE TABLE)	
B 変更 (FJ00-1574-94) J.S. S.M. 25 NOV '94				4-1		A J	
A 変更 (FJ00-1117-94) N.N. M.S. Y.K. 31 AUG '94				179975		REV. C	
O 作成 (FJ00-1117-94) N.N. M.S. Y.K. 4 JUL '94				SHEET		1 OF 1	
LTR 変更 (REVISION RECORD) DR. CHK. DATE				名称 (NAME)		250 シリーズ・ポジティブロック-EX-II セブタクル	
DR. N. NAGASHIMA 30 JUN '94 DE. M. SUZUKI 4 JUL '94				250 SERIES POSITIVE LOCK-EX-II REC.			
CHK. M. SHINDO 4 JUL '94 APP. Y. KASHIWA 4 JUL '94							

AMP-J010-10
REV. 3/93

(CUSTOMER DRAWING) 参 考 図 面

Mouser Electronics

Authorized Distributor

Click to View Pricing, Inventory, Delivery & Lifecycle Information:

[TE Connectivity:](#)

[179975-1](#)