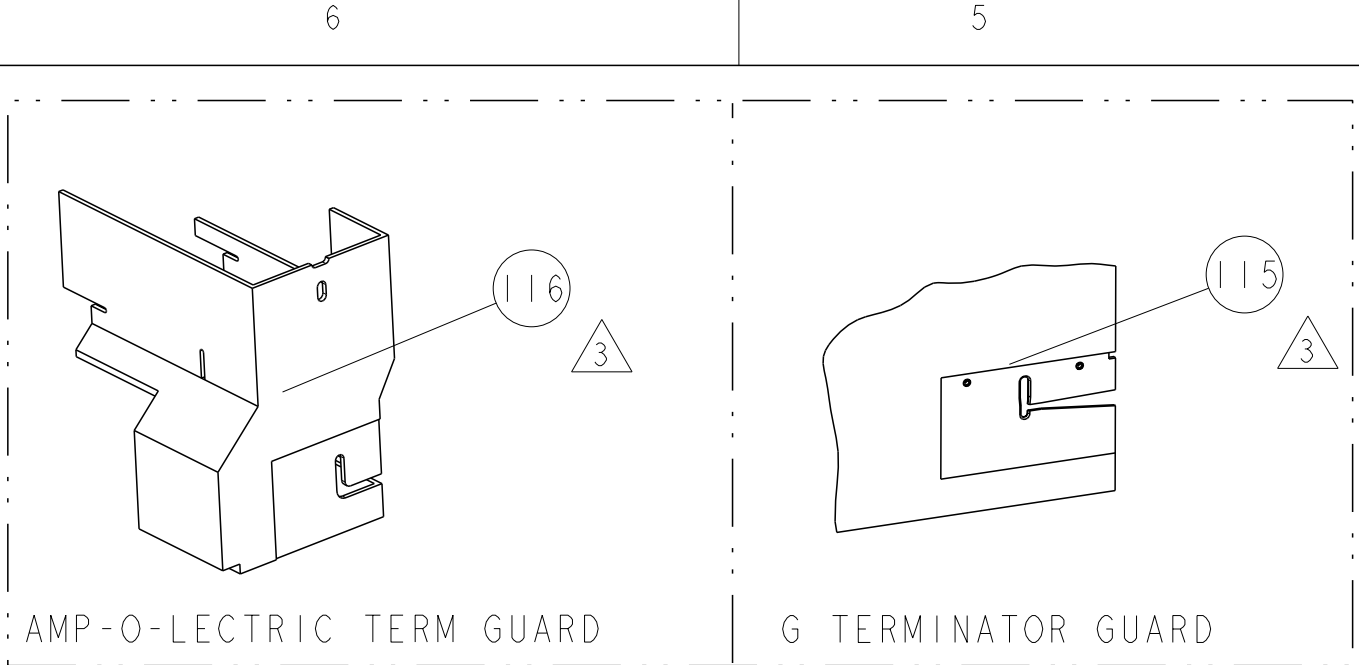
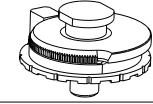


8			7														
THIS DRAWING IS UNPUBLISHED.						RELEASED FOR PUBLICATION						20					
COPYRIGHT 20						BY TYCO ELECTRONICS CORPORATION. ALL RIGHTS RESERVED.											
PART NUMBER		REV	FIRST USED		POWER UNIT				FEED TYPE				DESCRIPTION				
1855451-1		C	122500-1		LEADMAKER				AIR FEED				CUTS CARRIER				
1855451-2		C	565435-5		BENCH MODEL K				AIR FEED				CUTS CARRIER				
1855451-3		C	354500-1		BENCH MODEL G				AIR FEED				CUTS CARRIER				
7-1855451-7		A	-		-				-				SPARE PARTS				

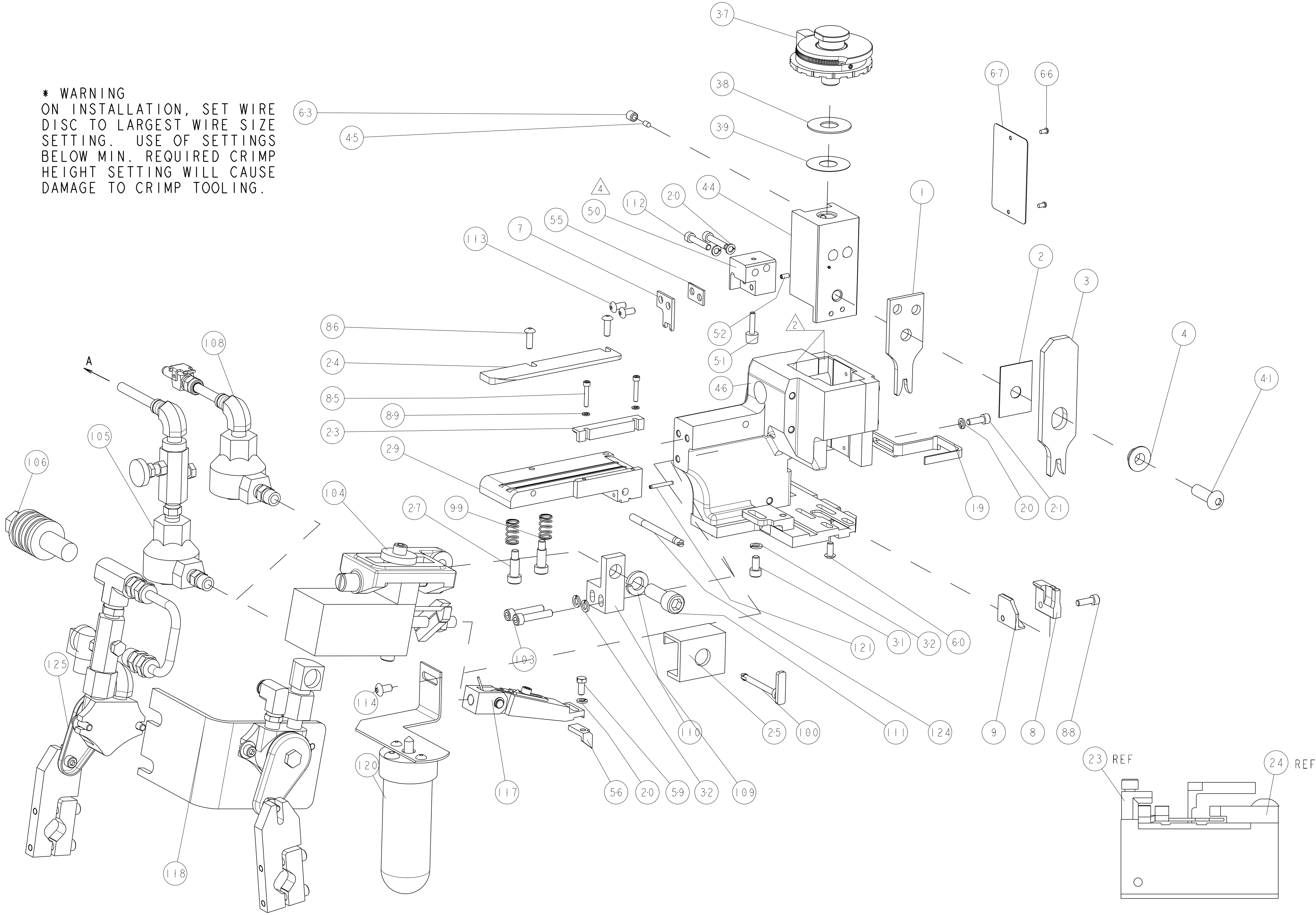
- △ RECOMMENDED SPARE PARTS
△ GREASE LIGHTLY
△ GUARD MUST BE IN PLACE WHEN OPERATING APPLICATOR IN A BENCH MACHINE
△ GRIND AT ASSEMBLY.
5. TERMINAL LUBRICANT IS RECOMMENDED.
△ INSTALL ITEMS 101,102 & 119 ON SIDE OF STRIPPER ON APPLICATOR HOUSING USING ITEM 21.



TERMINAL NAME: RING TONGUE						
TE PN	DELPHI	DELPHI TERMINAL - TE CRIMP SPECS				
1949828-2	2984576					REF SETTING
1949828-3	2973375					
-	-	CRIMP HEIGHT		WIRE SIZE		
-	-	2.67mm+.05/- .05 [.105+.002/- .002]		14AWG or 2mm2		
-	-	2.53mm+.05/- .05 [.100+.002/- .002]		1.5mm2		
-	-	2.47mm+.05/- .05 [.097+.002/- .002]		16AWG or 1.25mm2		
-	-	2.41mm+.05/- .05 [.095+.002/- .002]		1mm2		
-	-	CRIMP	SIZE	TYPE	RANGE	
-	-					
-	-					
-	-					
-	-	WIRE	3.30mm [.130]	F	1mm2-2mm2	
-	-	INSUL	4.20mm [.165]	F	Ø 3.050 MAX	
WIRE STRIP LENGTH 4.47-4.85	TERM APPL SPEC NONE	FEED 13.89	APPLICATOR INSTRUCTIONS 408-8040		SET UP GAGE 458637-1	

LOC		DIST		REVISIONS						
A		66								
		P	LTR	DESCRIPTION				DATE	OWN	APVD
			A	RELEASED				30JAN2009	BH	BH
			B	ECR-09-007141				30MAR2009	MY	GB
			C	ECR-10-009696				12MAY2010	MY	TE

* WARNING
ON INSTALLATION, SET WIRE DISC TO LARGEST WIRE SIZE SETTING. USE OF SETTINGS BELOW MIN. REQUIRED CRIMP HEIGHT SETTING WILL CAUSE DAMAGE TO CRIMP TOOLING.



6	-	-	1	-	-	455350-4	AIR BLAST ASS'Y	125
	-	-	1	1	-	690432-6	ADJUSTMENT SCREW	124
	-	-	1	1	-	4-21028-0	PIN, SLOTTED SPRING .094 X .750	121
	-	-	1	-	..	1-465184-0	LUBRICATOR ASSY	120
3	-	18	24	18	IN	27319-4	TUBING 1/4" O.D.	119
	-	-	1	-	..	692655-6	AIR FEED VALVE ASSEMBLY	118
	-	-	1	1	-	461062-1	FEED FINGER ASSEMBLY	117
	-	-	REF	-	..	455749-1	GUARD WINDOW	116
4	-	REF	-	-	..	679532-1	INSERT, GUARD	115
	-	-	1	-	-	2-21002-6	SCR, BTN SKT HD CAP 10-32 X .375	114
	-	2	2	2	-	2-21002-1	SCR, BTN SKT HD CAP 8-32 X .375	113
	-	2	2	2	-	3-21000-0	SCR, SKT HD CAP 8-32 X .875	112
6	-	1	1	1	-	3-21001-5	SCR, SKT HD CAP 3/8-16 X 1.000	111
	-	1	1	1	-	459610-1	MOUNT, FEED BRACKET	110
	-	1	1	1	-	21024-8	WASHER, SPRG LOCK, REG 3/8	109
	-	1	-	1	-	692655-7	AIR FEED VALVE ASSEMBLY	108
6	-	-	1	-	-	24042-2	VALVE, SLEEVE, 3-WAY	106
	-	-	1	-	-	692655-5	AIR FEED VALVE ASSEMBLY	105
	-	1	1	1	-	461065-1	ASSEMBLY, AIR FEED	104
	-	2	2	2	-	3-21000-9	SCR, SKT HD CAP 10-32 X 1.000	103
6	-	1	1	1	-	986220-3	CLAMP, CABLE, BLACK	102
	-	1	1	1	-	23238-1	INSERT, COUPLING	101
	-	1	1	1	-	690546-1	LEVER, DRAG RELEASE	100
	-	2	2	2	-	1-22282-3	SPRING, COMPRESSION	99
6	-	2	2	2	-	21024-2	WASHER, SPRG LOCK, REG NO 4	89
	-	1	1	1	-	2-21000-7	SCR, SKT HD CAP 8-32 X .500	88
	-	2	2	2	-	2-21002-2	SCR, BTN SKT HD CAP 8-32 X .500	86
	-	2	2	2	-	1-21000-6	SCR, SKT HD CAP 4-40 X .625	85
6	-	1	1	1	-	4088040	SF APPL INST 408-8040	72
	-	1	1	1	-	217238-1	GENERAL INSTRUCTION PKG	71
	-	1	1	1	-	461264-5	PLATE, IDENTIFICATION	67
	-	2	2	2	-	21017-2	SCREW, DRIVE	66
6	-	1	1	1	-	21009-2	SCR, SET, SELF LOCKING 1/4-20 X .250	63
	-	1	1	1	-	22733-8	SCR, BHSC, SELF-LOCKING, 8-32 X .375	60
	-	1	1	1	-	2-22603-1	SCREW, MACH, HEX HD, 8-32 x .375	59
	-	1	1	1	-	1-694433-5	FEED PAWL	56
6	-	1	1	1	-	5-240641-4	SPACER	55
	-	1	1	1	-	2-21008-1	SCR, SET, SELF LOCKING 1/4-20 X .250	52
	-	1	1	1	-	811242-7	BUMPER, HOLD DOWN	51
	-	1	1	1	-	1633513-1	HOLDER, SLUG BLADE	50
6	-	1	1	1	-	1633399-1	APPL., BASIC AIR FEED SUB ASSY	46
	-	1	1	1	-	690191-1	PLUG,NYLON	45
	-	1	1	1	-	1-455673-4	RAM, SIDE FEED	44
	-	1	1	1	-	7-21002-9	SCR, BTN SKT HD CAP 5/16-24 X 1.00	41
6	-	1	1	1	-	690125-1	SHIM SUB-ASSY	39
	-	1	1	1	-	469367-7	SHIM	38
	-	1	1	1	-	879103-3	FINE ADJUST HEAD ASSEMBLY	37
	-	3	3	3	-	21024-5	WASHER, SPRG LOCK, REG NO 10	32
6	-	1	1	1	-	3-21000-4	SCR, SKT HD CAP 10-32 X .375	31
	-	1	1	1	-	3-455671-3	PLATE,STRIP GUIDE	29
	-	2	2	2	-	27210-3	SCR, SHLD, HEX HD,1/4 DIA	27
	-	1	1	1	-	6-690754-0	DRAG, SPECIAL	25
6	-	1	1	1	-	8-690440-5	GUIDE, REAR STRIP	24
	-	1	1	1	-	2-690712-6	FRONT STRIP GUIDE	23
	-	1	1	1	-	2-21000-7	SCR, SKT HD CAP 8-32 X .500	21
	-	4	4	4	-	21024-4	WASHER, SPRG LOCK, REG NO 8	20
6	-	1	1	1	-	1-456468-1	STRIPPER, SPECIAL	19
	-	1	1	1	-	1633742-2	PLATE, REAR SHEAR	9
	-	1	1	1	-	1633758-1	ANVIL, SPECIAL, COMBINATION	8
	-	1	1	1	-	1-1583859-4	BLADE, SLUG	7
6	-	-	-	-	..	-	-	6
	-	-	-	-	..	-	-	5
	-	1	1	1	-	238009-5	BLOCK, FL CRIMPER SPACER	4
	-	1	1	1	-	1633471-9	CRIMPER, INSULATION F	3
6	-	1	1	1	-	455888-5	SPACER, CRIMPER	2
	-	1	1	1	-	8-1633305-9	CRIMPER, WIRE PREMIUM	1
	-77	-3	2	-1	U/M	PART NO	DESCRIPTION	ITEM NO

Mouser Electronics

Authorized Distributor

Click to View Pricing, Inventory, Delivery & Lifecycle Information:

[TE Connectivity:](#)

[1855451-3](#)