



intercontec
products

940 Receptacle

speedtec

8-pin
Earth-to-Housing Connection according to VDE 0627
flange mount / Flange 40x40

Technical Data

number of pins	8
power	4 (3+PE)
signal	4
temperature range	-20 °C to 130 °C
protection type	when connected IP 66/67

Electrical Data

rated current	power max. 75 A*	signal max. 30 A*
rated voltage	630V (AC/DC)	250 V (AC/DC)
rated insulation voltage (L-L)	6000 V	4000 V

mating cycles	500
---------------	-----

Data according to VDE 0110/EN61984, Paragraph 6.19.2.2

pollution degree	3
over voltage category	III
max. height for operation	2000 m

Material

housing	zinc diecast / nickel plated
insulation insert	PA 6.6 mod., UL 94/V0
seals	FKM

Contacts (not part of product contents)

Tools (not part of product contents)

C EG A 271 NN 00 00 0030 000
C E A 271 N 00 00 0030 000



Contact Arrangement
mating view

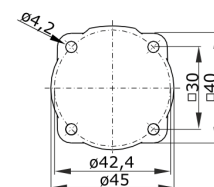
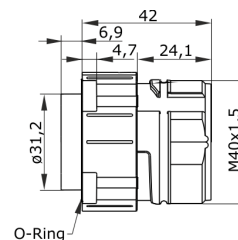


© 2018 TE Connectivity

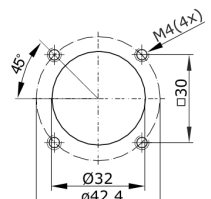
TE Connectivity, TE connectivity (logo), intercontec (logo) and speedtec are trademarks.

While TE Connectivity (TE) has made every reasonable effort to ensure the accuracy of the information in this presentation, TE does not guarantee that it is error-free, nor does TE make any other representation, warranty or guarantee that the information is accurate, correct, reliable or current. TE reserves the right to make any adjustments to the information contained herein at any time without notice. TE expressly disclaims all implied warranties regarding the information contained herein, including, but not limited to, any implied warranties of merchantability or fitness for a particular purpose. The dimensions in this article are for reference purposes only and are subject to change without notice. Specifications are subject to change without notice. Consult TE for the latest dimensions and design specifications.

TE Connectivity Industrial GmbH
Bernrieder Straße 15
94559 Niederwinkling, Deutschland
Tel.: +49 9962 2002-0
Fax: +49 9962 2002-70
E-Mail: intercontec@te.com
Web: www.intercontec.biz



Hauptabmessungen
Flansch



Montagefenster

Main Dimensions
Receptacle

*for max. wire cross-section
pay attention to the
cross-section of used contacts

Mouser Electronics

Authorized Distributor

Click to View Pricing, Inventory, Delivery & Lifecycle Information:

[TE Connectivity:](#)

[CEGA271NN00000030000](#)