

SAFETY ORGANIZATION(S).

THIS FILTER HAS BEEN FORMALLY RECOGNIZED, CERTIFIED OR APPROVED BY THE LISTED AGENCY. THEREFORE, ALL TEST/REQUIREMENTS SPECIFIED IN THE LATEST REVISION OF THE FOLLOWING AGENCY STANDARDS HAVE BEEN MET.

UL RECOGNIZED  
CSA CERTIFIED  
VDE APPROVED

UL 544  
CSA 22.2, NO.0,0.4,8  
VDE 0565-3, 0625

OPERATING SPECIFICATIONS.

LINE VOLTAGE/CURRENT.  
6 AMP., 120/250 VAC  
6 AMP./40°C, 250 VAC  
50-60Hz  
30°C

LINE FREQUENCY,  
MAX. CASE RISE @ RATED CURRENT,  
MAX. LEAKAGE CURRENT, EACH  
LINE TO GROUND  
2µA at 120V 60 Hz  
5µA at 250V 50 Hz  
-10°C TO +40°C @ RATED CURRENT, I<sub>r</sub>

IN AN AMBIENT, T<sub>a</sub>, HIGHER THAN 40°C, THE MAXIMUM OPERATING CURRENT, I<sub>o</sub>, IS AS FOLLOWS,  
$$I_o = I_r \sqrt{\frac{85-T_a}{45}}$$

RELIABILITY SPECIFICATIONS.

STORAGE TEMPERATURE,  
HUMIDITY,  
CURRENT OVERLOAD TEST,  
6 TIMES RATED CURRENT FOR 8 SECONDS  
-40°C TO +85°C  
21 DAYS @ 40°C 95% RH

TEST SPECIFICATIONS.

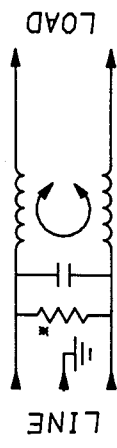
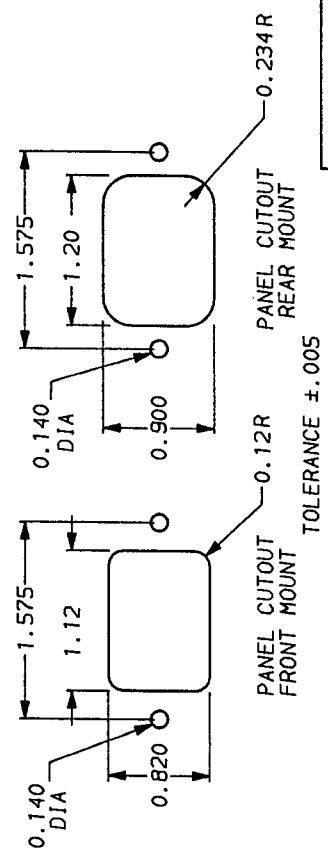
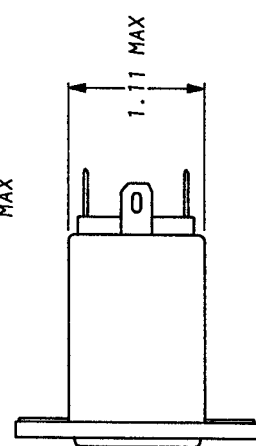
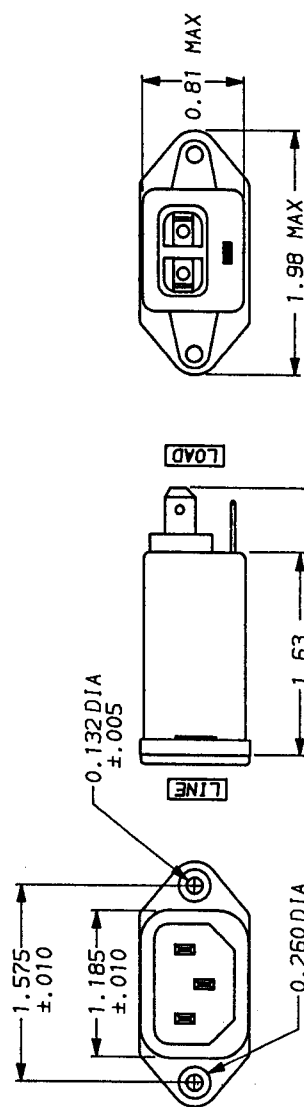
INDUCTANCE,  
CAPACITANCE, (MEASURED @ 1 KHz, 0.25 VAC MAX., 25°C ±1°C)  
ZERO  
DISCHARGE RESISTOR,  
LINE TO GROUND,  
LINE TO LINE,  
1.5 MΩ  
6000 MΩ (MIN) AT 100 VDC  
INSULATION RESISTANCE  
(W/O DISCHARGE RESISTOR)  
20°C AND 50% RH

RECOMMENDED RECEIVING INSPECTION HIPOTEST.

LINES TO GROUND,  
LINES TO LINE,  
1500 VAC FOR 1 MINUTE  
1450 VDC FOR 1 MINUTE

FILTER APPROVAL.

THE BEST WAY TO SELECT AND QUALIFY A FILTER IS FOR YOUR ENGINEERING TO TEST THE UNIT IN YOUR EQUIPMENT.



50a - 50a (MINIMUM) INSERTION LOSS										
FREQUENCY MHz	.10	.15	.50	1	1.5	3	5	10	30	
COMMON	5	6	19	21	22	23	24	26	15	
DIFF.	-	-	-	2	5	14	19	26	27	

This document is proprietary to CORCOM INC. and is not to be reproduced nor used for manufacturing purposes except on CORCOM's order or prior written consent.

 LIBERTYVILLE, IL 60048		POWER LINE FILTER	
		AS SUPPLIED	
TOLERANCE EXCEPT AS NOTED DECIMAL: .XXX .XX .X ANGLES ENGLISH: ±.025 METRIC: ±		FINISH: AS SUPPLIED	
DATE 9-19-91		REV. 01	
SCALE NTS		ORIG. NO. GEAH1	
BY CFW		CFW	

RESISTOR ADDED TO PRODUCT BUILT AFTER 3-30-92 (9212).

# Mouser Electronics

Authorized Distributor

Click to View Pricing, Inventory, Delivery & Lifecycle Information:

[TE Connectivity:](#)

[6EAH1](#)