

SAFETY ORGANIZATION(S):

THIS FILTER HAS BEEN FORMALLY RECOGNIZED, CERTIFIED OR APPROVED BY THE LISTED AGENCY. THEREFORE, ALL TEST/REQUIREMENTS SPECIFIED IN THE LATEST REVISION OF THE FOLLOWING AGENCY STANDARDS HAVE BEEN MET:

- UL 1283
- CSA 22.2, NO.0,0.4,8
- VDE 565-3

OPERATING SPECIFICATIONS:

LINE VOLTAGE/CURRENT:

- 5 AMP., 120/250 VAC
- 5 AMP./40°C, 250 VAC
- 50-60Hz
- 30°C

LINE FREQUENCY:

- MAX. CASE RISE θ RATED CURRENT:
- MAX. LEAKAGE CURRENT, EACH
- LINE TO GROUND
- OPERATING AMBIENT TEMP. RANGE:

- .5 mA at 120V 60 Hz
- 1.0 mA at 250V 50 Hz
- 10°C TO +40°C θ RATED CURRENT, I_r

IN AN AMBIENT, T_a , HIGHER THAN 40°C, THE MAXIMUM OPERATING CURRENT, I_o , IS AS FOLLOWS:

$$I_o = I_r \sqrt{\frac{85-T_a}{45}}$$

RELIABILITY SPECIFICATIONS:

STORAGE TEMPERATURE:

HUMIDITY:

CURRENT OVERLOAD TEST:

TEST SPECIFICATIONS:

INDUCTANCE:

CAPACITANCE: (MEASURED θ 1 KHz, 0.25 VAC MAX., 25°C \pm 1°C)

LINE TO GROUND:

LINE TO LINE:

DISCHARGE RESISTOR

LINE/GROUND AND LINE/LINE

INSULATION RESISTANCE

- .516 mH NOMINAL
- .011 μ F \pm 20%
- .203 μ F \pm 20%
- 1.5M Ω
- 6000 M Ω (MIN) AT 100 VDC
- 20°C AND 50% RH

RECOMMENDED RECEIVING INSPECTION HIPOT:

- LINES TO GROUND: 2250 VDC FOR 1 MINUTE
- LINE TO LINE: 1450 VDC FOR 1 MINUTE

FILTER APPROVAL:

THE BEST WAY TO SELECT AND QUALIFY A FILTER IS FOR YOUR ENGINEERING TO TEST THE UNIT IN YOUR EQUIPMENT.

50 Ω - 50 Ω (MINIMUM) INSERTION LOSS

FREQUENCY MHz	.15	.5	1	2	5	10	20	30
COMMON dB	10	25	32	37	46	50	52	53
DIFF. dB	5	5	40	60	63	60	50	50

This document is proprietary to CORCOM INC. and is not to be reproduced nor used for manufacturing purposes except on CORCOM's order or prior written consent.

TOLERANCE EXCEPT AS NOTED

DECIMAL: .XXX .XX .X ANGLES \pm 1°
ENGLISH: \pm .025
METRIC: \pm —

MATERIAL:

AS SUPPLIED

FINISH:

AS SUPPLIED



CORCOM
LIBERTYVILLE, IL 60048

POWER LINE FILTER

SCALE DATE 7-31-90

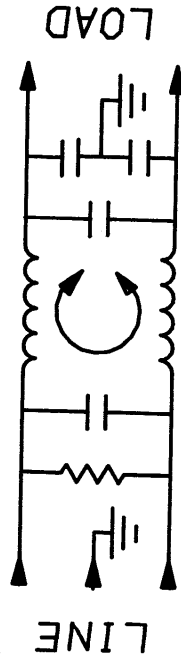
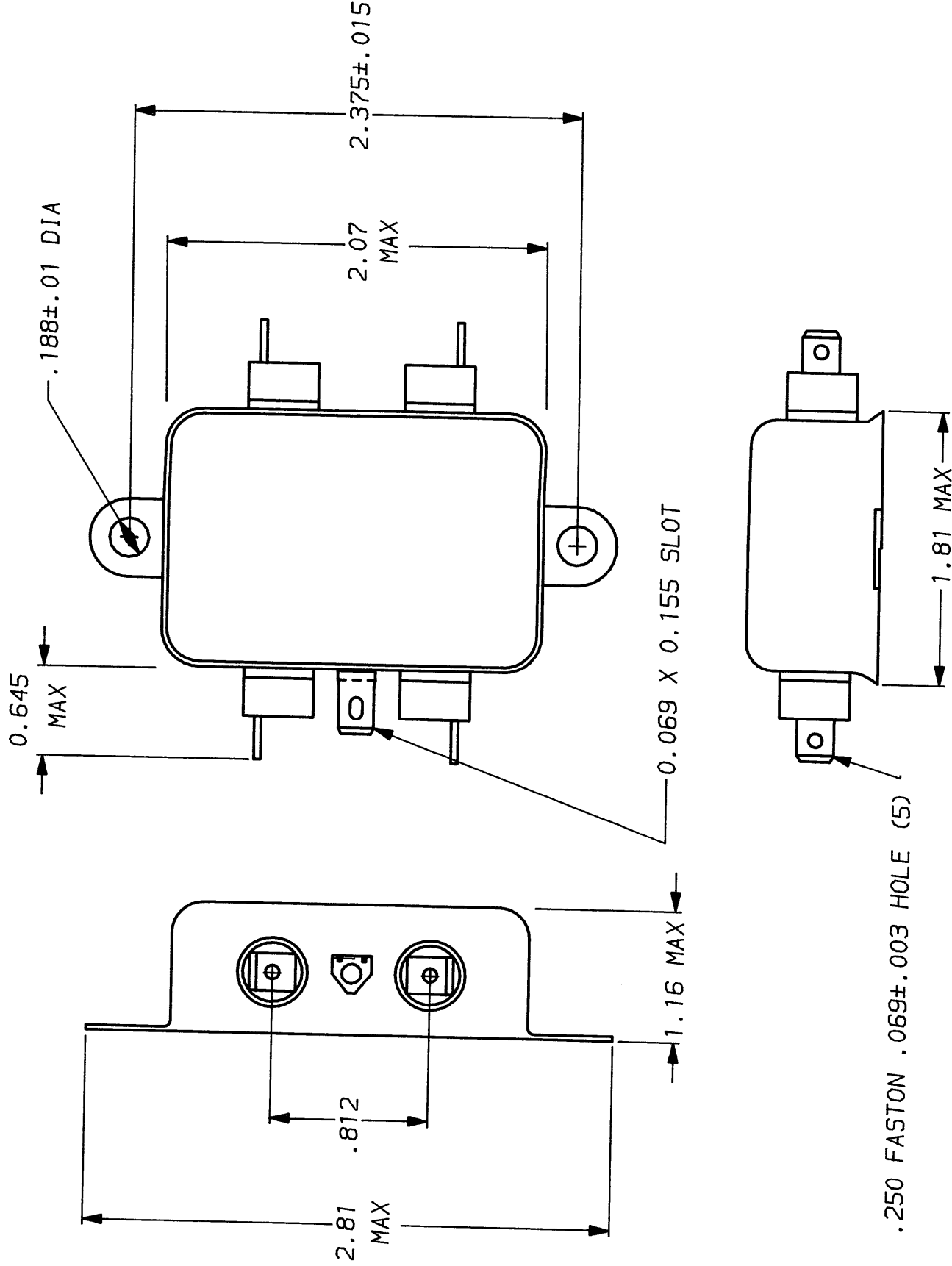
DRW. BY ORIGINATOR

CFW CFW

DRG. NO.

5VK1.05

REV.



Mouser Electronics

Authorized Distributor

Click to View Pricing, Inventory, Delivery & Lifecycle Information:

[TE Connectivity:](#)

[5VK1](#)