

THIS DRAWING IS UNPUBLISHED.	RELEASED FOR PUBLICATION	- , - .
© COPYRIGHT - By -	ALL RIGHTS RESERVED.	

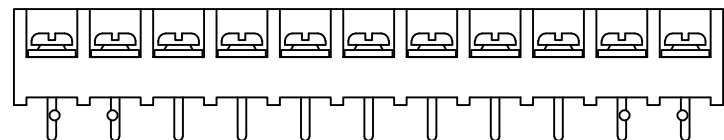
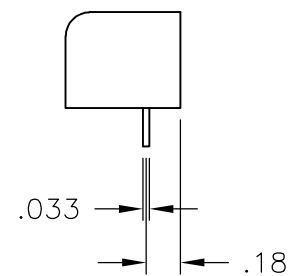
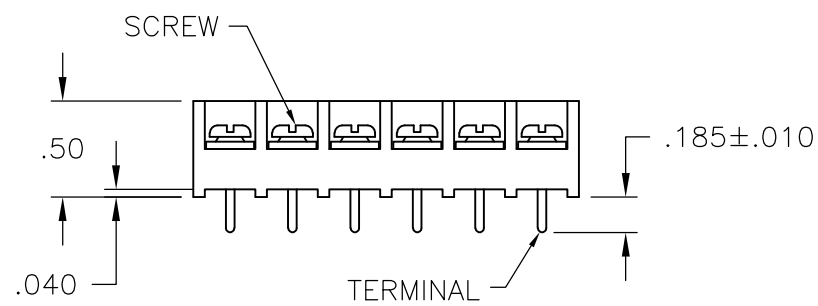
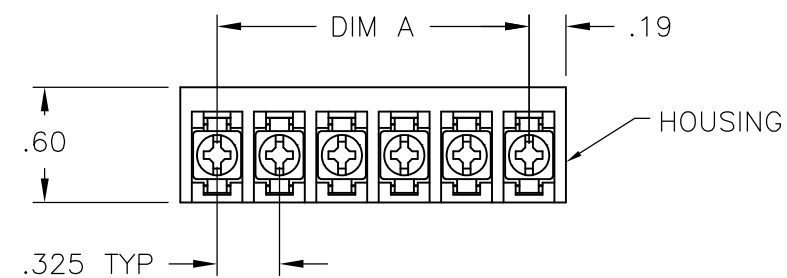
LOC	DIST	REVISIONS					
FT	0	P	LTR	DESCRIPTION	DATE	DWN	APVD
			L4	WIRE SIZE CORRECTION	05MAR2015	CR	PS

MATERIALS:  
HOUSING: POLYAMIDE, UL94V-0  
TERMINALS: COPPER ALLOY, TIN PLATED  
SCREWS: STEEL, ZINC PLATED, EXCEPT WHERE NOTED.

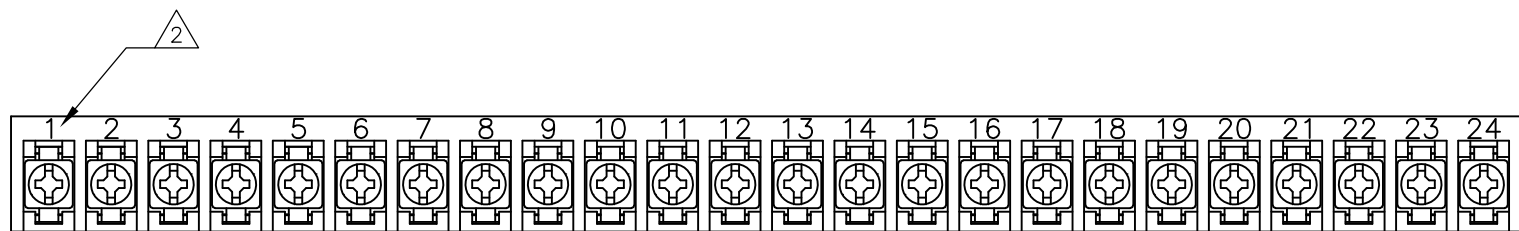
ELECTRICAL:  
RATING: 20A, 150V(300V LIMITED RATING)  
UL & CSA.

MECHANICAL:  
WIRE RANGE: 12 AWG – 22 AWG  
MAXIMUM TIGHTENING TORQUE: 7 IN-LBS.

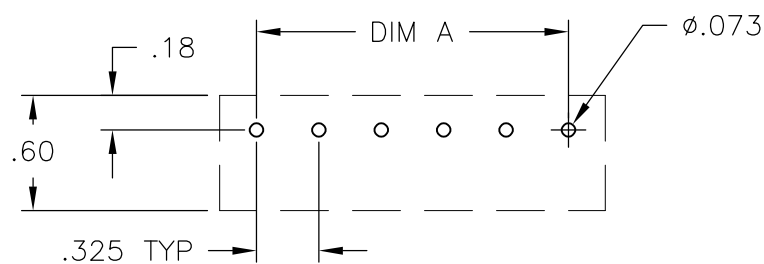
- |   |  |
|---|--|
| 1 | SCREWS ARE ALL BOTTOMED, NO RUNNING TORQUE.                        |
| 2 | PERMANENT WHITE LETTERING.   |
| 3 | SCREWS ARE NICKEL PLATED BRASS.                                    |
| 4 | PRELIMINARY PART NUMBER.   |
| 5 | PCB RETENTION FEATURE.   |
| 6 | OBsolete PARTS: OBsolete CIS STREAMLINING<br>PER D.RENAUD/D.SINISI |





2-796607-1



4-1437649-0



RECOMMENDED HOLE LAYOUT  
TOLERANCE  $\pm 0.002$ , UNLESS OTHERWISE SPECIFIED

THIS DRAWING IS A CONTROLLED DOCUMENT.		DWN S. SCHLEGEL 27JUN02		<div>TE Connectivity</div>			
		CHK S. YODER 7/9/02					
DIMENSIONS: INCHES		TOLERANCES UNLESS OTHERWISE SPECIFIED:		NAME  4PCV-XX-006 ASSEMBLY			
		APVD S. YODER 7/9/02					
		PRODUCT SPEC —					
		APPLICATION SPEC —					
MATERIAL —		FINISH —		SIZE A2	CAGE CODE 00779	DRAWING NO G-5-1437648-7	RESTRICTED TO —
CUSTOMER DRAWING				SCALE NTS	SHEET 1 of 1	REV L4	

# Mouser Electronics

Authorized Distributor

Click to View Pricing, Inventory, Delivery & Lifecycle Information:

[TE Connectivity:](#)

[4PCV-06-006](#)