

LOC	DIST	REVISIONS					
		P	LTR	DESCRIPTION	DATE	DWN	APVD
GZ	00		B	ECR-09-007281	21APR2009	JS	JH
			C	ECR-09-012204	11JUN2009	JS	DB

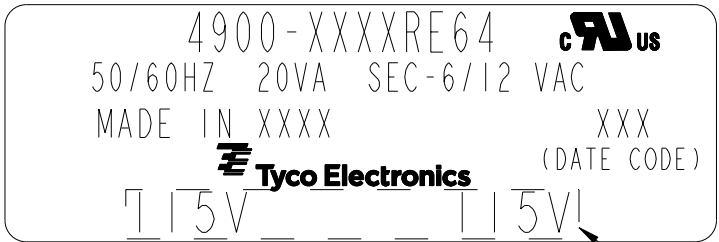
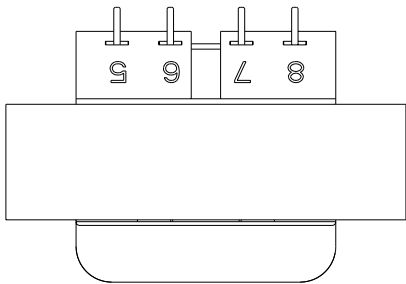
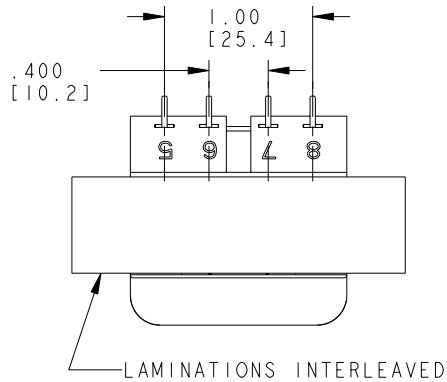
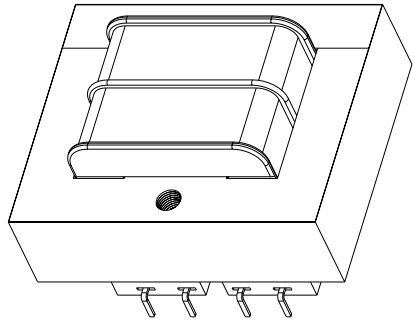
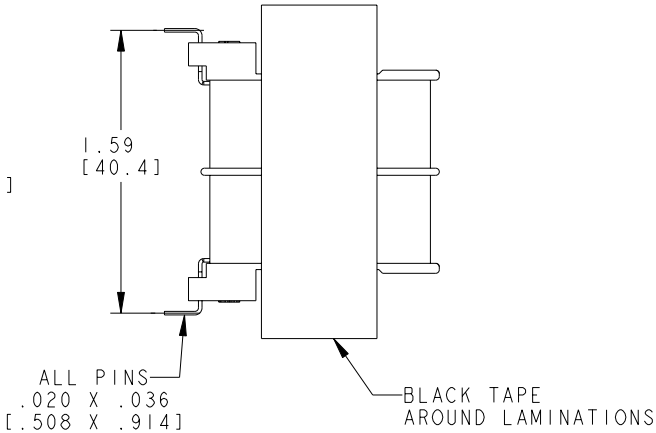
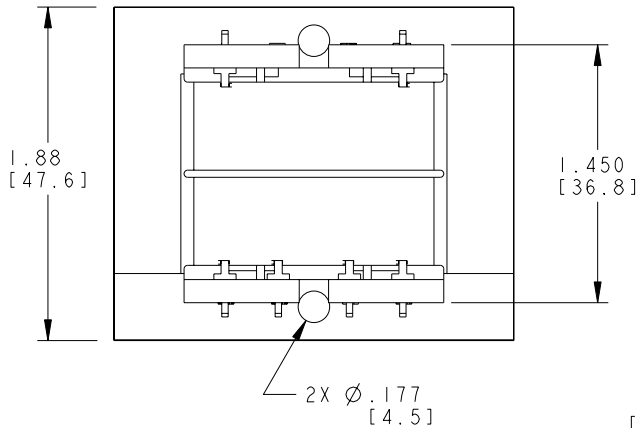
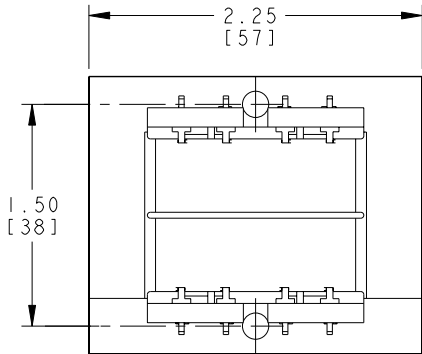
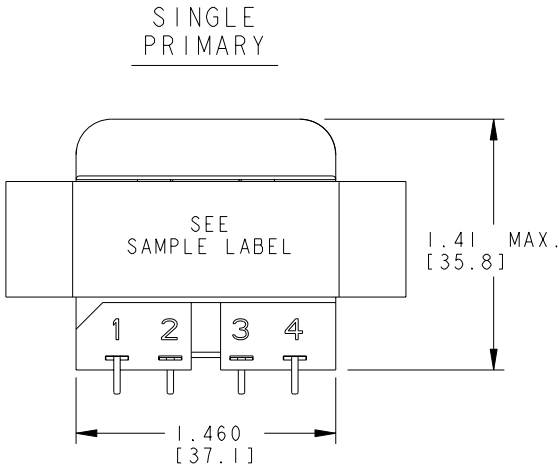
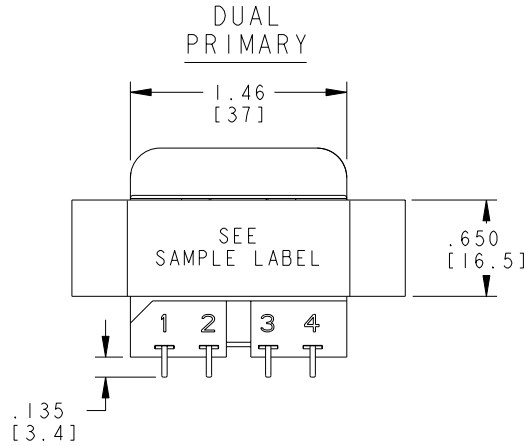
CERTIFICATION: UL/CUL FILE NO. E102980

DIMENSIONS FOR REFERENCE ONLY

HZ. 50/60

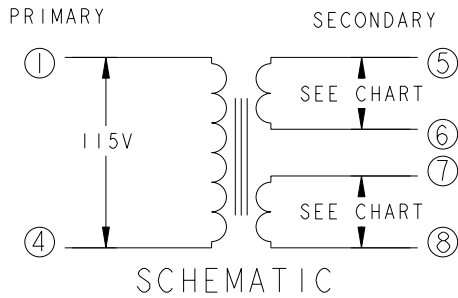
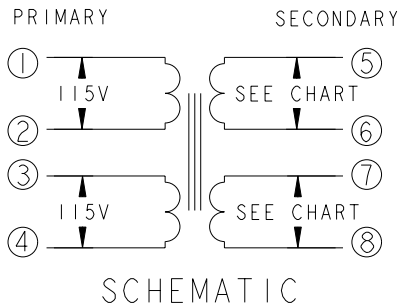
V.A. 20

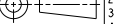
PRIMARY	SECONDARY		P.U. PART NUMBER	TYCO ELECTRONICS PART NUMBER
	SERIES	PARALLEL		
115 VAC	12 VCT	6 VAC	4900-8012RE64	1672326-2
115 VAC	12.6 VCT	6.3 VAC	4900-8013RE64	1672326-3
115 VAC	24 VCT	12 VAC	4900-8024RE64	1672326-6
115 VAC	28 VCT	14 VAC	4900-8028RE64	1672326-7
115 VAC	48 VCT	24 VAC	4900-8048RE64	1-1672326-0
115/230 VAC	12 VCT	6 VAC	4900-9012RE64	1-1672326-4
115/230 VAC	12.6 VCT	6.3 VAC	4900-9013RE64	1-1672326-5
115/230 VAC	24 VCT	12 VAC	4900-9024RE64	1-1672326-8
115/230 VAC	28 VCT	14 VAC	4900-9028RE64	1-1672326-9
115/230 VAC	48 VCT	24 VAC	4900-9048RE64	2-1672326-2



SAMPLE LABEL SCALE: 4:1

VOLTAGE ON LABEL WILL VARY PER MODEL NUMBER.



THIS DRAWING IS A CONTROLLED DOCUMENT FOR TYCO ELECTRONICS CORPORATION. IT IS SUBJECT TO CHANGE AND THE CONTROLLING ENGINEERING ORGANIZATION SHOULD BE CONTACTED FOR THE LATEST REVISION.				DWN J. SLIKE 21APR2009		Tyco Electronics Harrisburg, PA 17105-3608					
DIMENSIONS: INCHES [mm]		TOLERANCES UNLESS OTHERWISE SPECIFIED:		CHK J. HURLBURY 21APR2009		NAME TRANSFORMER OUTLINE					
		0 PLC ±. 1 PLC ±. 2 PLC ±.01 3 PLC ±.005 4 PLC ±.		APVD J. HURLBURY 21APR2009							
				PRODUCT SPEC							
				APPLICATION SPEC		SIZE		CAGE CODE	DRAWING NO	RESTRICTED TO	
						A2		00779	G-4900-RE64	-	
MATERIAL		FINISH		WEIGHT							
-		-		-		CUSTOMER DRAWING					
						SCALE		5:4	SHEET	OF	REV
									1	1	C

# Mouser Electronics

Authorized Distributor

Click to View Pricing, Inventory, Delivery & Lifecycle Information:

[TE Connectivity:](#)

[4900-9028RE64](#)