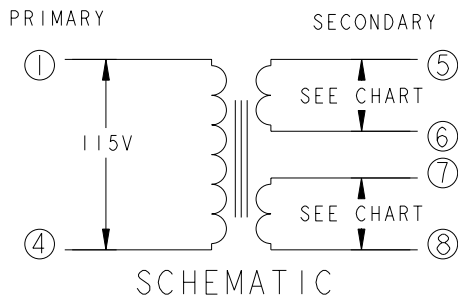
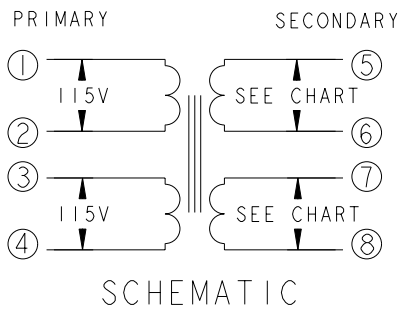
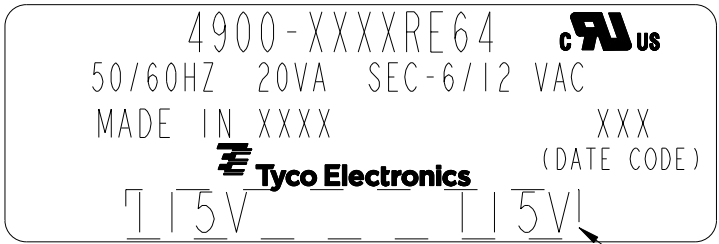
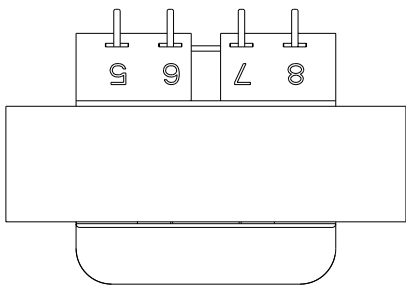
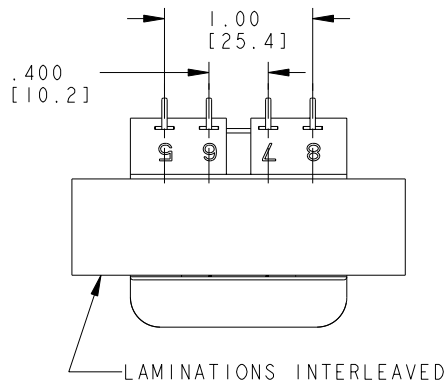
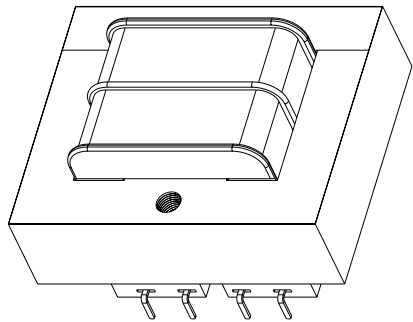
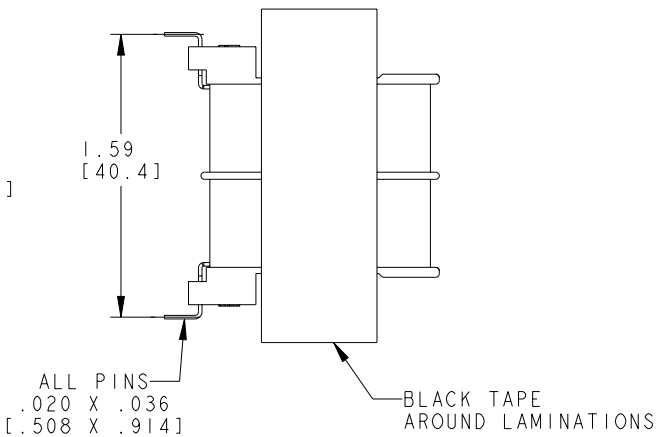
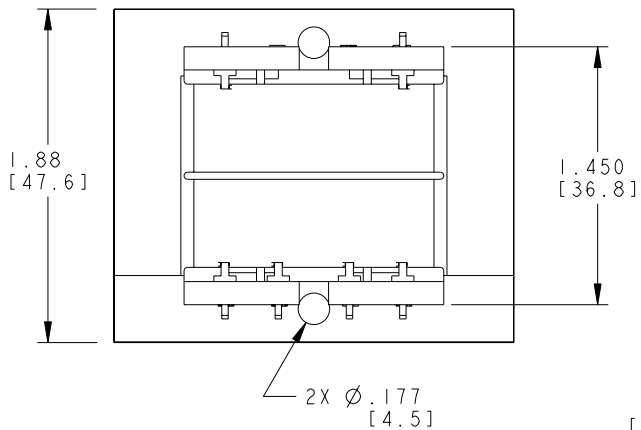
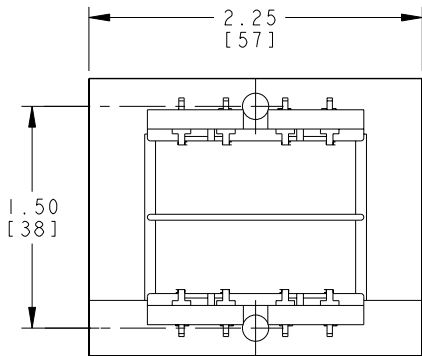
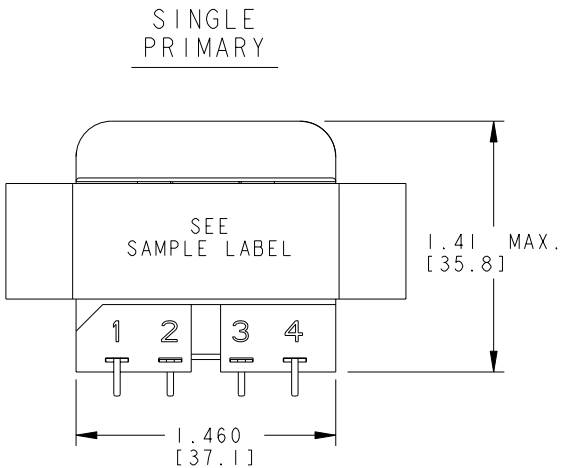
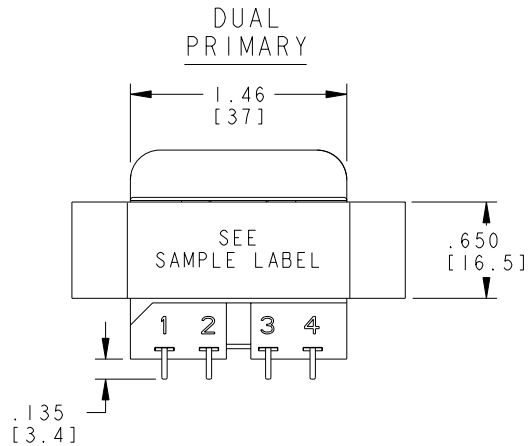


LOC	DIST	REVISIONS				
GZ	00	P	LTR	DESCRIPTION	DATE	DWN APVD
			B	ECR-09-007281	21APR2009	JS JH
			C	ECR-09-012204	11JUN2009	JS DB

CERTIFICATION: UL/CUL FILE NO. E102980			HZ.	V.A.
DIMENSIONS FOR REFERENCE ONLY			50/60	20
PRIMARY	SECONDARY		P.U. PART NUMBER	TYCO ELECTRONICS PART NUMBER
	SERIES	PARALLEL		
115 VAC	12 VCT	6 VAC	4900-8012RE64	1672326-2
115 VAC	12.6 VCT	6.3 VAC	4900-8013RE64	1672326-3
115 VAC	24 VCT	12 VAC	4900-8024RE64	1672326-6
115 VAC	28 VCT	14 VAC	4900-8028RE64	1672326-7
115 VAC	48 VCT	24 VAC	4900-8048RE64	1-1672326-0
115/230 VAC	12 VCT	6 VAC	4900-9012RE64	1-1672326-4
115/230 VAC	12.6 VCT	6.3 VAC	4900-9013RE64	1-1672326-5
115/230 VAC	24 VCT	12 VAC	4900-9024RE64	1-1672326-8
115/230 VAC	28 VCT	14 VAC	4900-9028RE64	1-1672326-9
115/230 VAC	48 VCT	24 VAC	4900-9048RE64	2-1672326-2



THIS DRAWING IS A CONTROLLED DOCUMENT FOR TYCO ELECTRONICS CORPORATION. IT IS SUBJECT TO CHANGE AND THE CONTROLLING ENGINEERING ORGANIZATION SHOULD BE CONTACTED FOR THE LATEST REVISION.		DWN J. SLIKE 21APR2009	Tyco Electronics Harrisburg, PA 17105-3608	
DIMENSIONS: INCHES [mm]		CHK J. HURLBURY 21APR2009	NAME TRANSFORMER OUTLINE	
		APVD J. HURLBURY 21APR2009	SIZE CAGE CODE DRAWING NO RESTRICTED TO	
		PRODUCT SPEC	A200779C-4900-RE64	
TOLERANCES UNLESS OTHERWISE SPECIFIED:		APPLICATION SPEC	WEIGHT	
0 PLC ±.01		1 PLC ±.01	SCALE 5:4	
2 PLC ±.01		2 PLC ±.01	SHEET 1 OF 1	
3 PLC ±.005		3 PLC ±.005	REV C	
4 PLC ±.005		4 PLC ±.005		
ANGLES ±		ANGLES ±		
FINISH		FINISH		
MATERIAL		MATERIAL		
		CUSTOMER DRAWING		

Mouser Electronics

Authorized Distributor

Click to View Pricing, Inventory, Delivery & Lifecycle Information:

[TE Connectivity:](#)

[4900-8048RE64](#)