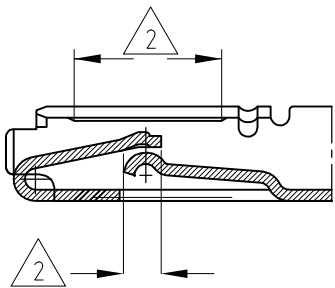
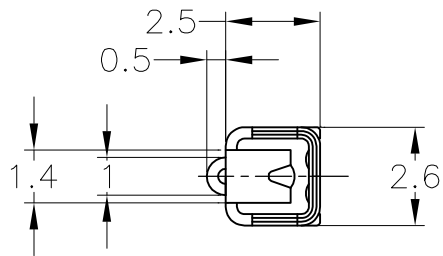
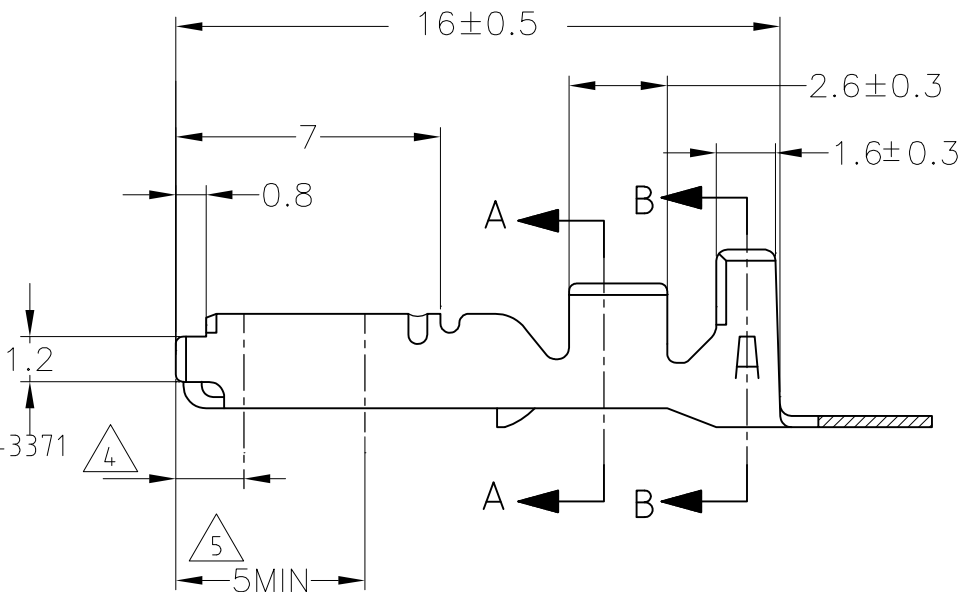
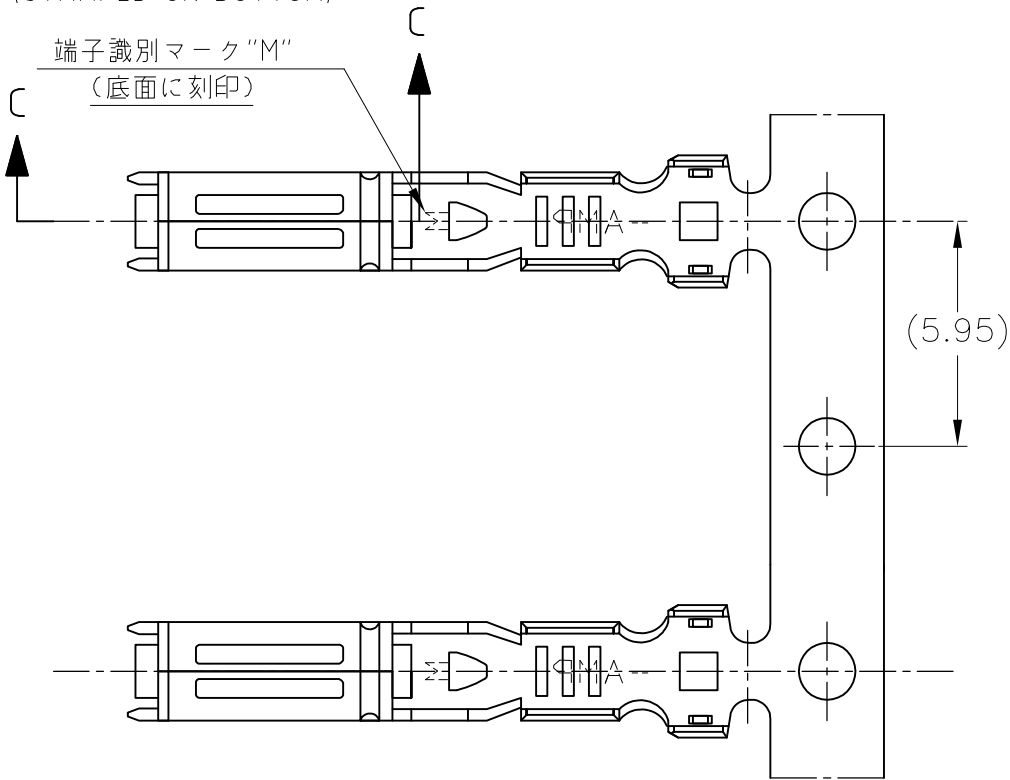


WIRE RANGE ID MARK  
("M" SIZE MARK)  
(STAMPED ON BOTTOM)

端子識別マーク "M"  
(底面に刻印)



断面 C-C  
SECT C-C



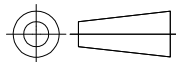
- 1. 製品規格 ; 108-5216, 108-5231, 108-5264, 108-3371
- 2. 部分金めっき
- 3. 取付適用規格 ; 114-5091
- 4. 識別用金めっき (全周)
- 5. 部分金めっき (両側のみ)

- 1. SPEC; 108-5216, 108-5231, 108-5264, 108-3371
- 2. SELECTIVE GOLD PLATING
- 3. APPLICATION SPEC; 114-5091
- 4. GOLD PLATING FOR DISCERNMENT (ALL AROUND)
- 5. SELECTIVE GOLD PLATING (ONLY BOTH SIDES OF THE BOX)

TOLERANCE UNLESS OTHERWISE SPECIFIED: 一般公差	
0< x ≤ 10	: ±0.2
10< x ≤ 30	: ±0.25
30< x ≤ 100	: ±0.3
ANGLE	: ±3°

THIS DRAWING IS A CONTROLLED DOCUMENT.

DIMENSIONS:  
単位: 耗  
mm



MATERIAL  
材料  
SEE TABLE

TOLERANCES UNLESS OTHERWISE SPECIFIED:  
一般公差

0 PLC	± -
1 PLC	± -
2 PLC	± -
3 PLC	± -
4 PLC	± -
ANGLES	± -

FINISH  
仕上  
SEE TABLE

WIRE RANGE  
0.5~1.25mm<sup>2</sup>  
(AWG#20-#16)

INSULATION DIA.  
2~2.6mmφ

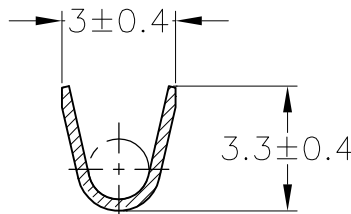
DWN	M.SUGAWARA	12MAY06
CHK	T.SHINOHARA	12MAY06
APVD	K.BETSUI	12MAY06
PRODUCT SPEC	製品規格	
APPLICATION SPEC	取付適用規格	
WEIGHT	-	

CUSTOMER DRAWING

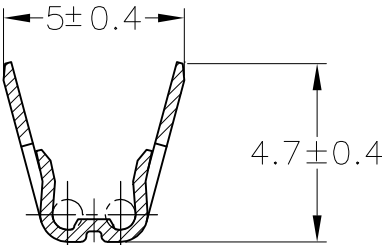
REVISIONS

変更

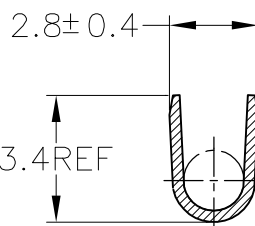
P	LTR	DESCRIPTION	DATE	DWN	APVD
	F1	REVISED	ECR-19-018615	17JUL2020	DM HK



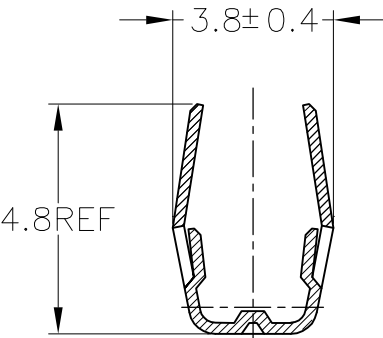
断面 A-A  
SECT A-A



断面 B-B  
SECT B-B



断面 A-A  
SECT A-A  
(175027のみ適用)  
(ONLY 175027)



断面 B-B  
SECT B-B  
(175027のみ適用)  
(ONLY 175027)

	部分金めっき SELECTIVE GOLD	黄銅 板厚0.3 BRASS t0.3	1-173631-2
SEE DRAWING 173631-8			173631-8
175027-7	部分金めっき SELECTIVE GOLD	リン青銅 板厚0.3 PHOS BRO. t0.3	173631-7
175027-6	鍍めっき済み PRE-TINNED	銅合金 板厚0.3 COPPER ALLOY t0.3	173631-6
175027-2	部分金めっき SELECTIVE GOLD	黄銅 板厚0.3 BRASS t0.3	173631-2
175027-1	鍍めっき済み PRE-TINNED	黄銅 板厚0.3 BRASS t0.3	173631-1
バラ端子型番 L/P NUMBER	仕上 FINISH	材料 MATERIAL	型番 PART NUMBER

TE Connectivity

070 SERIES RECEPTACLE CONTACT

SIZE	CAGE CODE	DRAWING NO 番号	RESTRICTED TO
A3	00779	C-173631	-

SCALE 5:1 SHEET 1 OF 1 REV F1

# Mouser Electronics

Authorized Distributor

Click to View Pricing, Inventory, Delivery & Lifecycle Information:

[TE Connectivity:](#)

[173631-2 \(Mouser Reel\)](#) [173631-6 \(Loose Piece\)](#)