

8		7	
THIS DRAWING IS UNPUBLISHED.		RELEASED FOR PUBLICATION	
2017		2017	
© COPYRIGHT 2017		BY TYCO ELECTRONICS CORPORATION. ALL RIGHTS RESERVED.	
PART NUMBER	REVISION	DESCRIPTION	FEED TYPE
2150812-1	C	FINE CRIMP HEIGHT ADJUST	MECHANICAL
2150812-2	C	FINE CRIMP HEIGHT ADJUST	PNEUMATIC
7-2150812-1	C	MECHANICAL AND CRIMP TOOLING KIT	MECHANICAL
7-2150812-2	C	PNEUMATIC AND CRIMP TOOLING KIT	PNEUMATIC
7-2150812-7	A	CRIMP TOOLING KIT	-

APPLICATOR DATA		
CRIMP	SIZE	TYPE
WIRE	2.03 mm [.080]	F
INSUL	3.05 mm [.120]	F
APPL INSTRUCTIONS 408-35043		

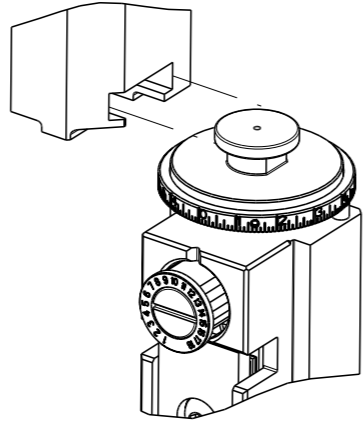
TERMINAL DATA: ESCUBEDO TERMINAL ESCUBEDO CRIMP SPECIFICATION			
TERMINAL NAME: 4.8 TERMINAL, FEMALE			
WIRE STRIP LENGTH 3.70-4.70 mm [.146-.185 IN]		INSULATION DIAMETER RANGE Ø 1.80-2.50 mm [.071-.098 IN]	
TERMINAL APPLICATION SPECIFICATION		4414.XX Rev 4	-
TERMINALS APPLIED			
TE TERMINAL	ESCUBEDO TERMINAL	TE TERMINAL	ESCUBEDO TERMINAL
2318306-1	4414.00	2318306-6	4414.24
2318306-2	4414.02	2318306-7	4414.30
2318306-3	4414.04	2318306-8	4414.32
2318306-4	4414.10	2318306-9	4414.70
2318306-5	4414.12		

WIRE SIZE		CRIMP HEIGHT mm [INCH]		CRIMP HEIGHT REFERENCE SETTING	
1.00mm2		1.40+/-0.05 [.055+/- .002]		8.3	
0.75mm2		1.30+/-0.05 [.051+/- .002]		9.3	
0.50mm2		1.20+/-0.05 [.047+/- .002]		10.4	



- RECOMMENDED SPARE PARTS
- REFER TO SUPPLIED INSTRUCTION SHEET FOR CLEANING, LUBRICATION AND STORAGE OF APPLICATOR.
- APPLY PART NUMBER 1-23419-5 LOCTITE TO THREADS OF ITEMS 180.
APPLY PART NUMBER 2-23419-6 LOCTITE TO THREADS OF ITEM 242.
- CRIMP HEIGHT REFERENCE SETTING WAS THE SETTING USED WHEN THE APPLICATOR WAS QUALIFIED AT THE FACTORY. ADJUSTMENT MAY BE NECESSARY WHEN RUNNING APPLICATOR IN THE FIELD.
- TERMINAL LUBRICANT IS RECOMMENDED.
6. UNLESS SPECIFIED OTHERWISE TORQUE VALUES SHALL BE USED PER DOCUMENT, 101-35000.

ATLANTIC VERSION TERMINATOR
INTERFACE ADAPTER



*WARNING
ON INSTALLATION, SET WIRE DISC TO CRIMP HEIGHT REFERENCE SETTING FOR LARGEST WIRE SIZE. CRIMP HEIGHT REFERENCE SETTINGS GREATER THAN THE VALUE SHOWN MAY CAUSE DAMAGE TO THE CRIMP TOOLING, REFER TO THE INSTRUCTION SHEET FOR PROPER SETUP AND ADJUSTMENTS.

ATLANTIC VERSION
Shown on sheets 1 of 4 & 2 of 4
(Pacific version shown on sheets 3 of 4 & 4 of 4)

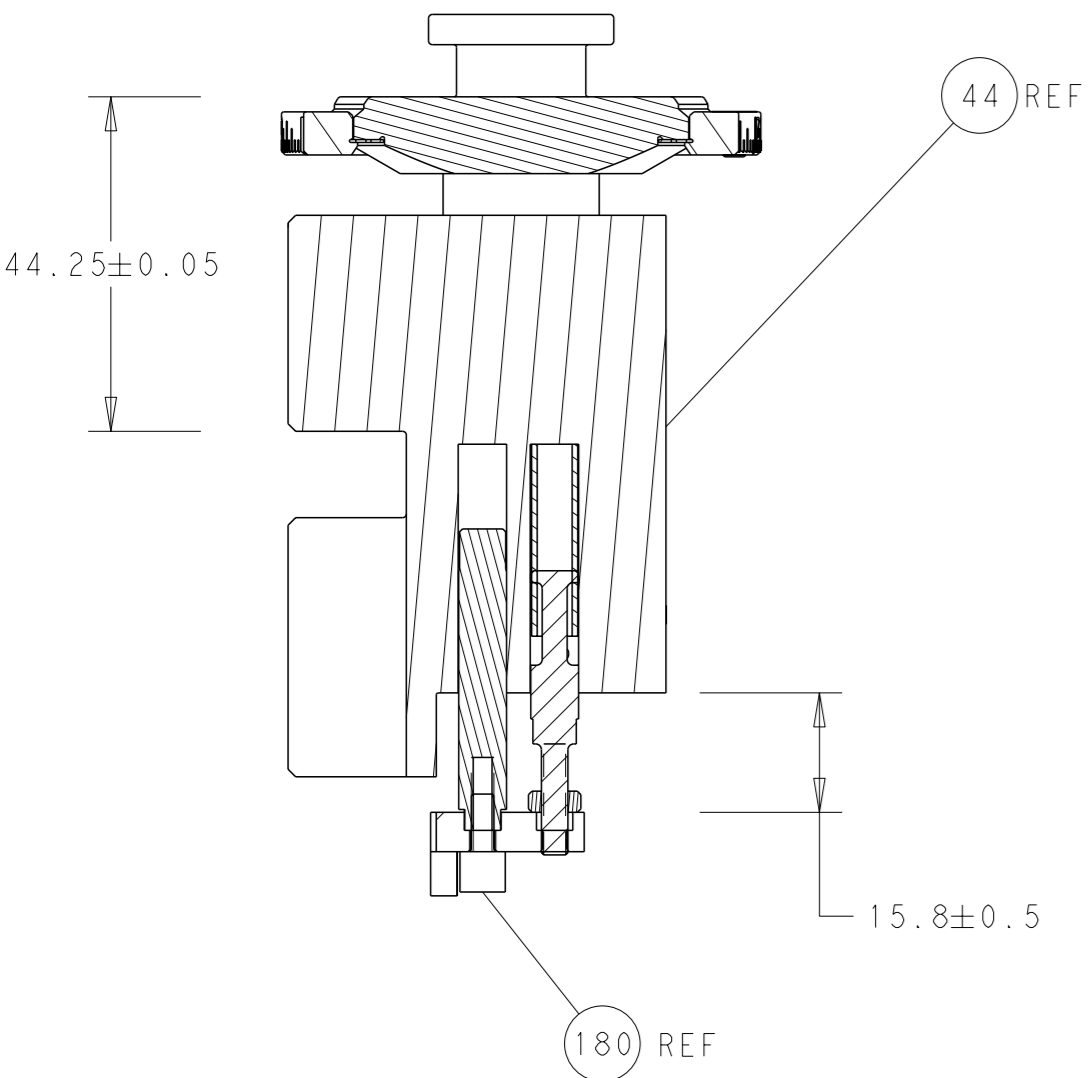
2		1					
LOC	DIST	REVISIONS					
A	66	P	LTR	DESCRIPTION	DATE	DWN	APVD
			A	RELEASED	13JULY2017	TB	CT
			B	ECR-17-017517	29NOV2017	JAH	TE
			C	ECR-20-002298	18FEB2020	F.J	TE

	-	1	-	1	-	2119641-1	FEED CAM, AIR FEED	248
	-	1	1	1	1	2119082-3	CAM, SNAIL, INSULATION ADJUSTMENT	244
	-	1	1	1	1	2079764-1	WASHER, WAVE SPRING, CREST-TO-CREST	243
3	-	1	1	1	1	2119083-1	RETAINER, INSULATION DIAL	242
	-	-	1	-	1	2119580-1	MECHANICAL FEED ASSEMBLY	239
	-	1	-	1	-	2844940-3	AIR FEED MODULE	238
	-	1	1	1	1	1-18028-0	WASHER, FLAT, REG M8	192
3	-	1	1	1	1	1752354-6	STANDOFF,HOLD-DOWN	180
	-	1	1	1	1	6-993111-6	PIN, SLOTTED SPRING 3.0 X 14.0	177
	-	1	1	1	1	8-22280-7	SPRING, COMPRESSION	176
	-	1	1	1	1	1752353-2	GUIDE PIN,HOLDDOWN	175
	-	1	1	1	1	1901680-2	GUIDE PIN,HOLDDOWN	174
	-	REF	REF	REF	REF	994970-2	COUNTER, MAGNETIC	164
5	-	1	1	1	1	2119955-2	ASSY, LUBRICATOR, END FEED	84
	-	1	1	1	1	455888-4	SPACER, CRIMPER	82
	-	1	1	1	1	1803607-4	DOCUMENTATION PACKAGE	71
	-	2	2	2	2	2-18032-2	SCR, SET, FLT PNT, M3 X 10.0	70
	-	1	1	1	1	2119740-1	TAG,IDENTIFICATION	67
	-	2	2	2	2	2168078-1	SCREW, DRIVE, RH, RoHS, 2 x .188	66
	-	1	1	1	1	1901681-5	HOLDDOWN, TERMINAL	65
	-	1	1	1	1	2168083-2	SCR, SKT HD CAP, RoHS, M4 X 8.0	60
	-	1	1	1	1	5-18022-5	SCR, HEX HD CAP, M4 X 6.0	59
	-	-	1	-	1	2063961-3	FEED FINGER	58
	-	4	4	4	4	2168400-4	SHCS, LOW HEAD, RoHS, M4 X 8	57
	-	2	2	2	2	2168083-2	SCR, SKT HD CAP, RoHS, M4 X 8.0	56
	-	2	2	2	2	5018030-1	NUT, HEX, REG, RoHS, M3	54
	-	2	2	2	2	986965-8	NUT, LOCK, HEX, TORQUE (M4)	53
	-	1	1	1	1	1-5018030-0	NUT, HEX, REG, RoHS, M3.5	52
	-	1	-	1	-	2063961-9	FEED FINGER	51
	-	1	2	1	2	18023-9	SCR, SKT HD CAP M4 X 6.0	49
	-	-	1	-	1	2119652-1	FEED CAM, PRE FEED	48
	-	-	1	-	1	2119653-1	FEED CAM, POST FEED	47
	-	1	1	1	1	2119655-5	APPLICATOR BASIC ASSEMBLY, EF	46
	-	1	1	1	1	1803517-1	RAM ASSEMBLY, EF ATLANTIC	44
	-	1	1	1	1	1803602-1	SCR, BHSC, RoHS (M8 X 25)	41
	-	8	8	8	8	1-18028-2	WASHER, FLAT, REG M4	33
	-	2	2	2	2	2168083-9	SCR, SKT HD CAP, RoHS, M4 X 20	31
	-	2	2	2	2	2168083-2	SCR, SKT HD CAP, RoHS, M4 X 8.0	29
	-	1	1	1	1	240639-1	STRIPPER (MACHINING)	27
	-	2	2	2	2	1-2168083-5	SCR, SKT HD CAP, RoHS, M4 X 30	25
	-	1	1	1	1	1752371-5	PLATE, STRIP GUIDE	24
	-	2	2	2	2	2-22281-3	SPRING, COMPRESSION	22
	-	1	1	1	1	1803292-4	DRAG	20
	-	1	1	1	1	1803152-4	STRIP GUIDE, REAR	19
	-	1	1	1	1	1803151-4	STRIP GUIDE, FRONT	18
	-	4	4	4	4	1-2079383-1	SCR, BHSC, RoHS (M6 X 12)	17
	-	1	1	1	1	6-240641-6	SPACER	16
	-	1	1	1	1	1752360-1	SPACER,HOLD-DOWN	13
1	-	1	1	1	1	2-240644-4	PLATE, REAR SHEAR	11
	-	-	-	-	-	-	-	10
1	-	1	1	1	1	5-690495-2	PLATE, FRONT SHEAR	9
1	1	2	2	1	1	3-1803257-2	ANVIL, COMBINATION, END FEED	8
1	-	1	1	1	1	1-2217206-0	BLADE, SLUG	7
	-	-	-	-	-	-	-	6
	-	1	1	1	1	240641-7	SPACER	5
	-	1	1	1	1	6-238011-0	BLOCK, CRIMPER SPACER	4
1	1	2	2	1	1	1-1633961-1	CRIMPER, INSULATION F PREMIUM	3
	-	1	1	1	1	455888-6	SPACER, CRIMPER	2
1	1	2	2	1	1	1-456405-4	CRIMPER, WIRE PREMIUM	1
	-77	-72	-71	-2	-1	PART NO	DESCRIPTION	ITEM NO

THIS DRAWING IS UNPUBLISHED. IT IS SUBJECT TO CHANGE AND TO BE CONTROLLED BY THE ENGINEERING DEPARTMENT. IT SHOULD BE CONTACTED FOR THE LATEST REVISION.				DWN M. HERR	06JUN2017	TE Connectivity Harrisburg, PA 17105-3608	
DIMENSIONS: mm		TOLERANCES UNLESS OTHERWISE SPECIFIED:		CHK T. ELBIN	06JUN2017	NAME Ocean End Feed Applicator	
		0 PLC ± 1 PLC ± 2 PLC ± 3 PLC ± 4 PLC ±		APVD T. ELBIN		PRODUCT SPEC	
MATERIAL :		FINISH :		APPLICATION SPEC		SIZE A1	
				WEIGHT -		CAGE CODE 00779	
				Customer Accessible Production Drawing		DRAWING NO ©=2150812	
				SCALE 1:1		SHEET 1 of 4	
						REV C	

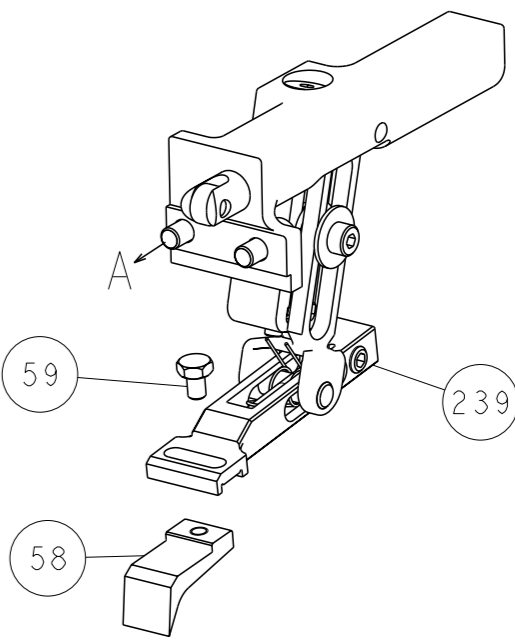
SHEETS 3 & 4 ARE NOT REQUIRED FOR ATLANTIC VERSION

LOC		DIST		REVISIONS					
A		66		P	LTR	DESCRIPTION	DATE	DWN	APVD
				-		SEE SHEET 1	-	-	-

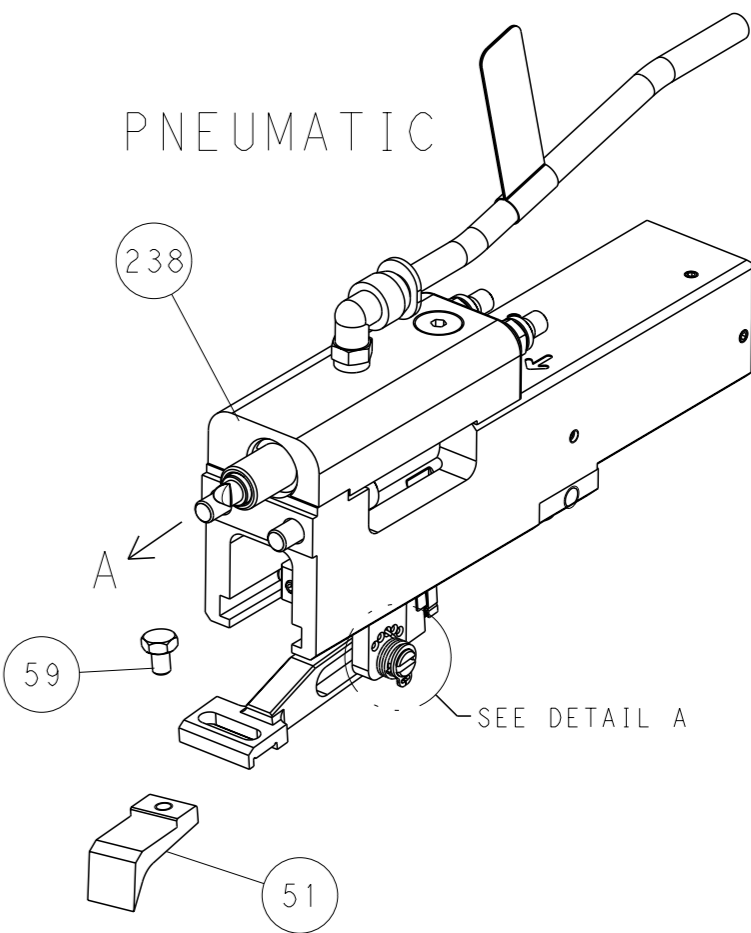


RAM AND HOLDDOWN SET-UP

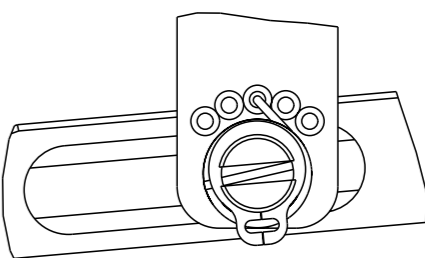
FEED TYPE
MECHANICAL



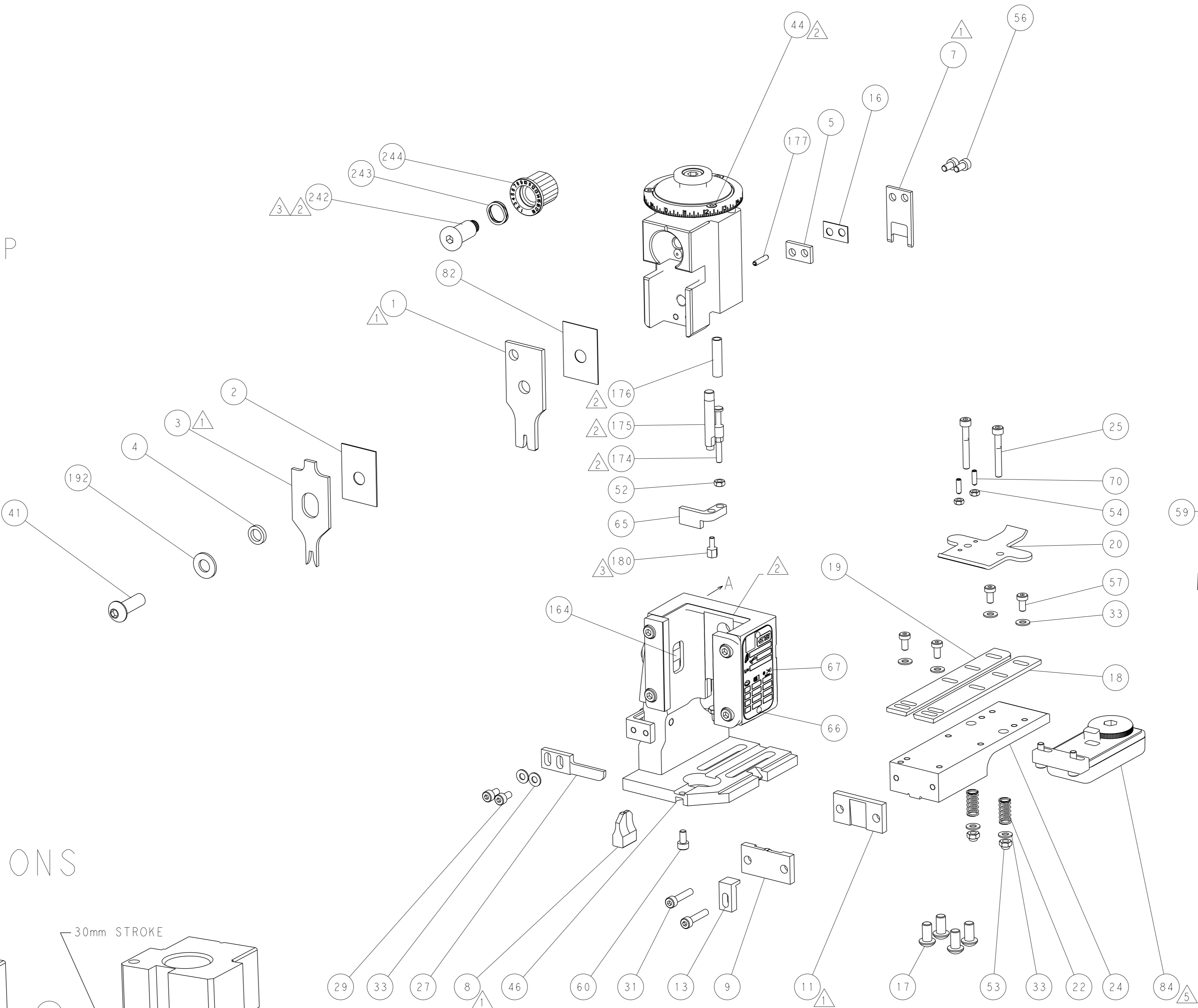
PNEUMATIC



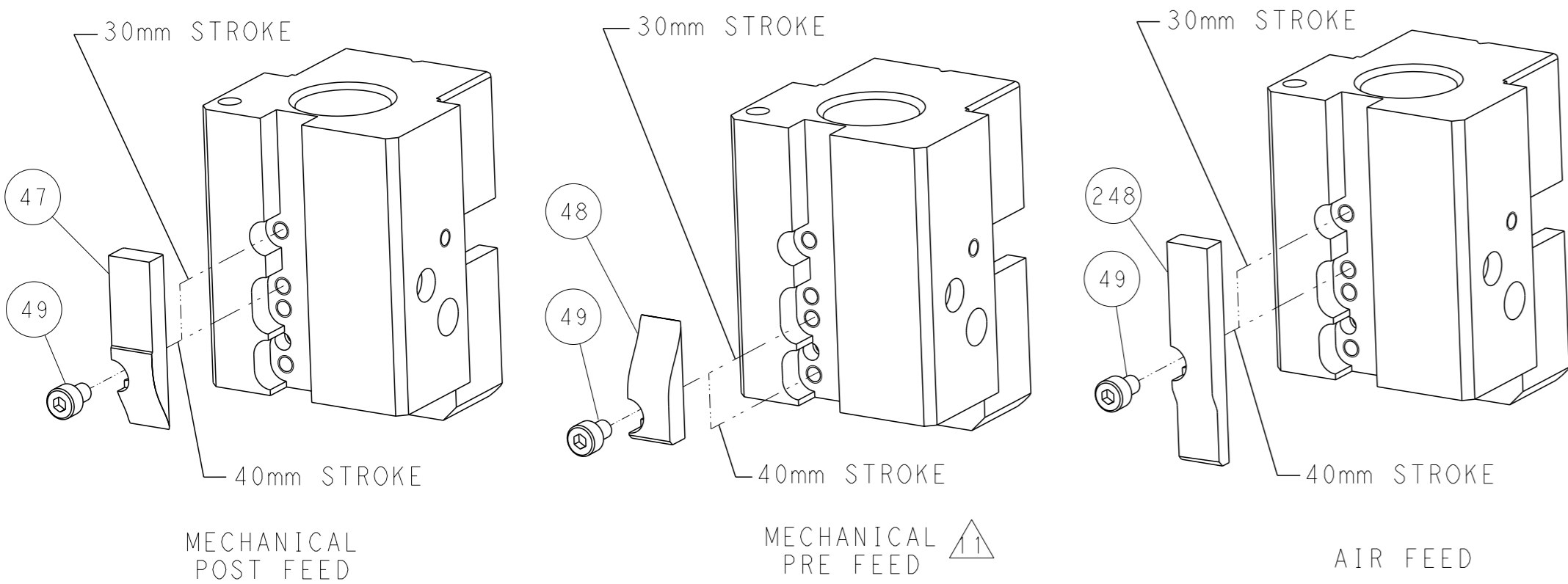
FEED SPRING
SETTING POSITION




DETAIL A



CAM POSITIONS

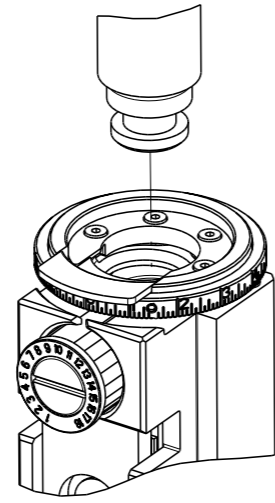


ATLANTIC VERSION
Shown on sheets 1 of 4 & 2 of 4
(Pacific version shown on sheets 3 of 4 & 4 of 4)

THIS DRAWING IS A CONTROLLED DOCUMENT FOR TYCO ELECTRONICS CORPORATION IT IS SUBJECT TO CHANGE AND TO CONTROL AND ENGINEERING ORGANIZATION SHOULD BE CONTACTED FOR THE LATEST REVISION.				DWN M. HERR	06JUN2017	 TE Connectivity Harrisburg, PA 17105-3608	NAME Ocean End Feed Applicator			
				CHK T. ELBIN	06JUN2017					
				APVD T. ELBIN	06JUN2017					
				PRODUCT SPEC						
				APPLICATION SPEC		SIZE A	CAGE CODE 00779	DRAWING NO C=2150812	RESTRICTED TO -	
				WEIGHT -						
				Customer Accessible Production Drawing						
				SCALE 1:1						
				SHEET 2		OF 4	REV C			

8		7	
THIS DRAWING IS UNPUBLISHED.		RELEASED FOR PUBLICATION	
2017		2017	
© COPYRIGHT 2017		BY TYCO ELECTRONICS CORPORATION. ALL RIGHTS RESERVED.	
PART NUMBER	REVISION	DESCRIPTION	FEED TYPE
2-2150812-1	C	FINE CRIMP HEIGHT ADJUST	MECHANICAL
2-2150812-2	C	FINE CRIMP HEIGHT ADJUST	PNEUMATIC
7-2150812-7	A	CRIMP TOOLING KIT	-

PACIFIC VERSION TERMINATOR
INTERFACE ADAPTER



APPLICATOR DATA		
CRIMP	SIZE	TYPE
WIRE	2.03 mm [.080]	F
INSUL	3.05 mm [.120]	F
APPL INSTRUCTIONS 408-35043		

TERMINAL DATA: ESCUBEDO TERMINAL ESCUBEDO CRIMP SPECIFICATION			
TERMINAL NAME: 4.8 TERMINAL, FEMALE			
WIRE STRIP LENGTH 3.70-4.70 mm [.146-.185 IN]		INSULATION DIAMETER RANGE Ø 1.80-2.50 mm [.071-.098 IN]	
TERMINAL APPLICATION SPECIFICATION		4414.XX Rev 4	-
TERMINALS APPLIED			
TE TERMINAL	ESCUBEDO TERMINAL	TE TERMINAL	ESCUBEDO TERMINAL
2318306-1	4414.00	2318306-6	4414.24
2318306-2	4414.02	2318306-7	4414.30
2318306-3	4414.04	2318306-8	4414.32
2318306-4	4414.10	2318306-9	4414.70
2318306-5	4414.12		

WIRE SIZE		CRIMP HEIGHT mm [INCH]		CRIMP HEIGHT REFERENCE SETTING
1.00mm2		1.40+/-0.05 [.055+/- .002]		8.3
0.75mm2		1.30+/-0.05 [.051+/- .002]		9.3
0.50mm2		1.20+/-0.05 [.047+/- .002]		10.4




- RECOMMENDED SPARE PARTS
- REFER TO SUPPLIED INSTRUCTION SHEET FOR CLEANING, LUBRICATION AND STORAGE OF APPLICATOR.
- APPLY PART NUMBER 1-23419-5 LOCTITE TO THREADS OF ITEMS 180.
APPLY PART NUMBER 2-23419-6 LOCTITE TO THREADS OF ITEM 242.
- CRIMP HEIGHT REFERENCE SETTING WAS THE SETTING USED WHEN THE APPLICATOR WAS QUALIFIED AT THE FACTORY. ADJUSTMENT MAY BE NECESSARY WHEN RUNNING APPLICATOR IN THE FIELD.
- TERMINAL LUBRICANT IS RECOMMENDED.
6. UNLESS SPECIFIED OTHERWISE TORQUE VALUES SHALL BE USED PER DOCUMENT, 101-35000.

*WARNING
ON INSTALLATION, SET WIRE DISC TO CRIMP HEIGHT REFERENCE SETTING FOR LARGEST WIRE SIZE. CRIMP HEIGHT REFERENCE SETTINGS GREATER THAN THE VALUE SHOWN MAY CAUSE DAMAGE TO THE CRIMP TOOLING, REFER TO THE INSTRUCTION SHEET FOR PROPER SETUP AND ADJUSTMENTS.

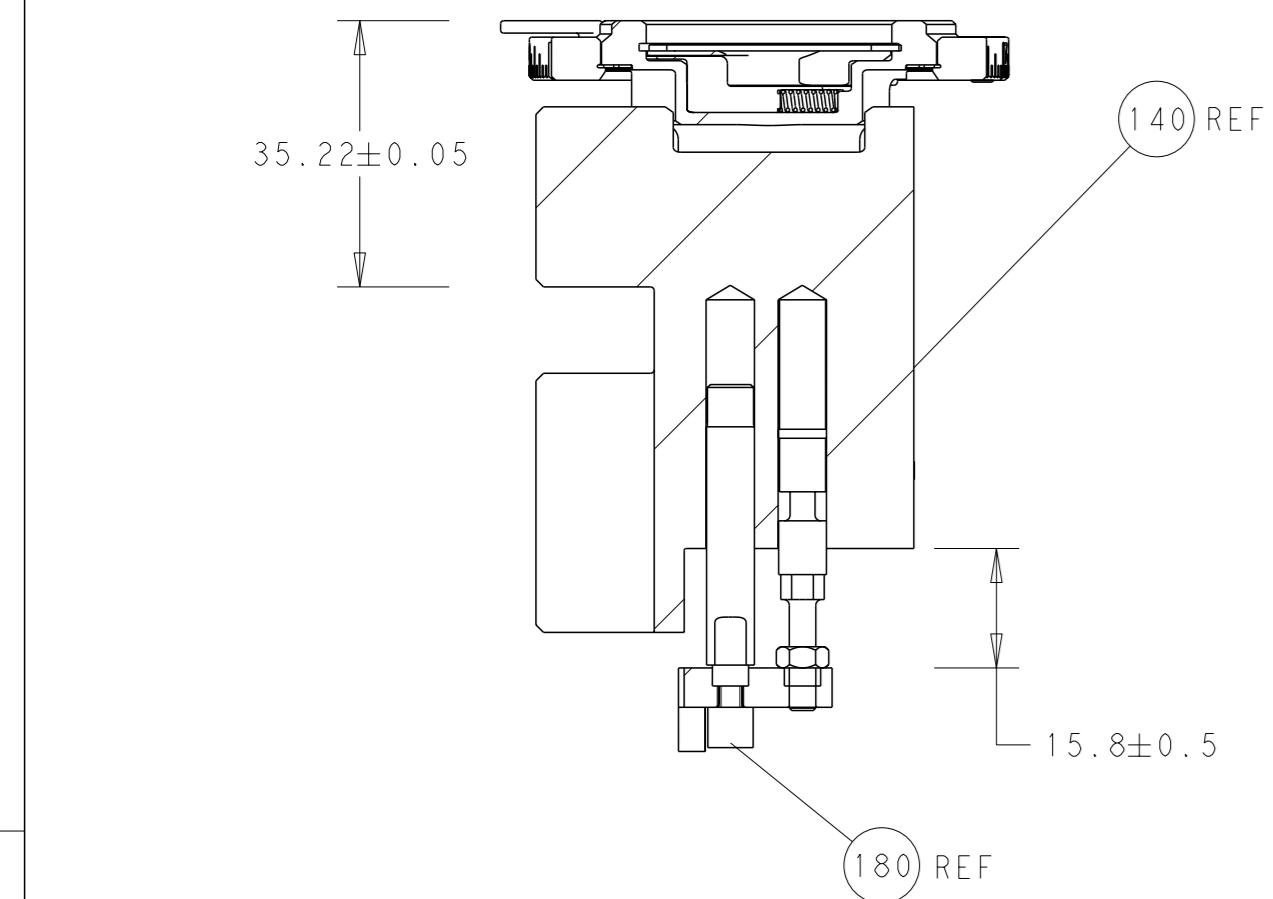
PACIFIC VERSION
Shown on sheets 3 of 4 & 4 of 4
(Atlantic version shown on sheets 1 of 4 & 2 of 4)

2		1					
LOC	DIST	REVISIONS					
A	66	P	LTR	DESCRIPTION	DATE	DWN	APVD
		-		SEE SHEET 1	-	-	-

-	1	1	2119082-3	CAM, SNAIL, INSULATION ADJUSTMENT	244
-	1	1	2079764-1	WASHER, WAVE SPRING, CREST-TO-CREST	243
-	1	1	2119083-1	RETAINER, INSULATION DIAL	242
-	-	1	2119580-1	MECHANICAL FEED ASSEMBLY	239
-	1	-	2844940-3	AIR FEED MODULE	238
-	1	1	1-18028-0	WASHER, FLAT, REG M8	192
-	4	4	2079383-9	SCR, BHSC, RoHS (M6 X 20)	186
-	1	1	1752354-6	STANDOFF,HOLD-DOWN	180
-	1	1	6-993111-6	PIN, SLOTTED SPRING 3.0 X 14.0	177
-	1	1	8-22280-7	SPRING, COMPRESSION	176
-	1	1	1752353-2	GUIDE PIN,HOLDDOWN	175
-	1	1	1901680-2	GUIDE PIN,HOLDDOWN	174
-	REF	REF	994970-2	COUNTER, MAGNETIC	164
-	1	-	2119641-2	FEED CAM, AIR FEED	152
-	1	1	2168083-8	SCR, SKT HD CAP, RoHS, M4 X 16	144
-	-	1	2119653-2	FEED CAM, POST FEED	142
-	1	1	2119655-6	APPLICATOR BASIC ASSEMBLY, EF	141
-	1	1	1803518-1	RAM ASSEMBLY, EF PACIFIC	140
-	1	1	2119955-2	ASSY, LUBRICATOR, END FEED	84
-	1	1	455888-4	SPACER, CRIMPER	82
-	1	1	1803607-4	DOCUMENTATION PACKAGE	71
-	2	2	2-18032-2	SCR, SET, FLT PNT, M3 X 10.0	70
-	1	1	2119740-1	TAG,IDENTIFICATION	67
-	2	2	2168078-1	SCREW, DRIVE, RH, RoHS, 2 x .188	66
-	1	1	1901681-5	HOLDDOWN, TERMINAL	65
-	1	1	5-18022-5	SCR, HEX HD CAP, M4 X 6.0	59
-	-	1	2063961-3	FEED FINGER	58
-	4	4	2168400-4	SHCS, LOW HEAD, RoHS, M4 X 8	57
-	2	2	2168083-2	SCR, SKT HD CAP, RoHS, M4 X 8.0	56
-	2	2	5018030-1	NUT, HEX, REG, RoHS, M3	54
-	2	2	986965-8	NUT, LOCK, HEX, TORQUE (M4)	53
-	1	1	1-5018030-0	NUT, HEX, REG, RoHS, M3.5	52
-	1	-	2063961-9	FEED FINGER	51
-	1	2	18023-9	SCR, SKT HD CAP M4 X 6.0	49
-	-	1	2119652-1	FEED CAM, PRE FEED	48
-	1	1	1803602-1	SCR, BHSC, RoHS (M8 X 25)	41
-	8	8	1-18028-2	WASHER, FLAT, REG M4	33
-	2	2	2168083-9	SCR, SKT HD CAP, RoHS, M4 X 20	31
-	2	2	2168083-2	SCR, SKT HD CAP, RoHS, M4 X 8.0	29
-	1	1	240639-1	STRIPPER (MACHINING)	27
-	2	2	1-2168083-5	SCR, SKT HD CAP, RoHS, M4 X 30	25
-	1	1	1752371-5	PLATE, STRIP GUIDE	24
-	2	2	2-22281-3	SPRING, COMPRESSION	22
-	1	1	1803292-4	DRAG	20
-	1	1	1803152-4	STRIP GUIDE, REAR	19
-	1	1	1803151-4	STRIP GUIDE, FRONT	18
-	1	1	6-240641-6	SPACER	16
-	1	1	1752360-1	SPACER,HOLD-DOWN	13
-	1	1	2-240644-4	PLATE, REAR SHEAR	11
-	-	-	-	-	10
-	1	1	5-690495-2	PLATE, FRONT SHEAR	9
-	1	1	3-1803257-2	ANVIL, COMBINATION, END FEED	8
-	1	1	1-2217206-0	BLADE, SLUG	7
-	-	-	-	-	6
-	1	1	240641-7	SPACER	5
-	1	1	6-238011-0	BLOCK, CRIMPER SPACER	4
-	1	1	1-1633961-1	CRIMPER, INSULATION F PREMIUM	3
-	1	1	455888-6	SPACER, CRIMPER	2
-	1	1	1-456405-4	CRIMPER, WIRE PREMIUM	1
-	77-22-21		PART NO	DESCRIPTION	ITEM NO

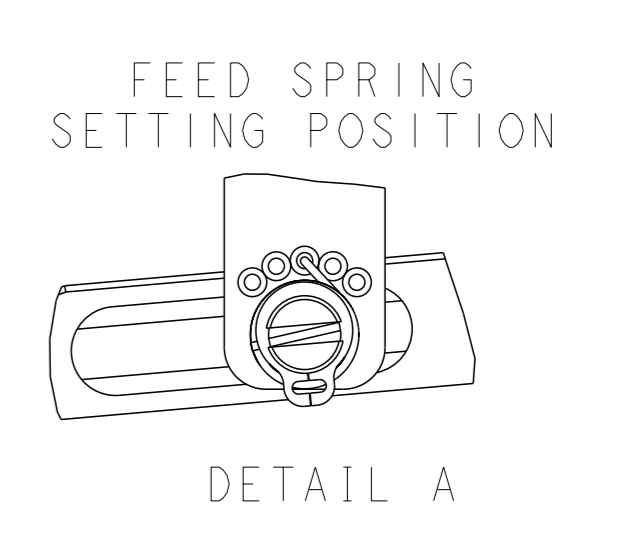
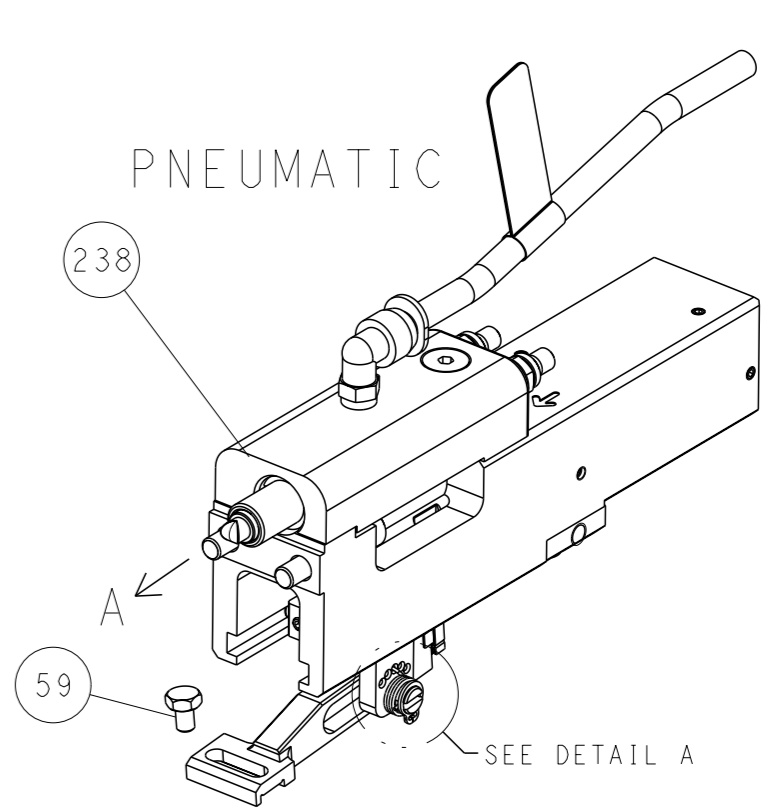
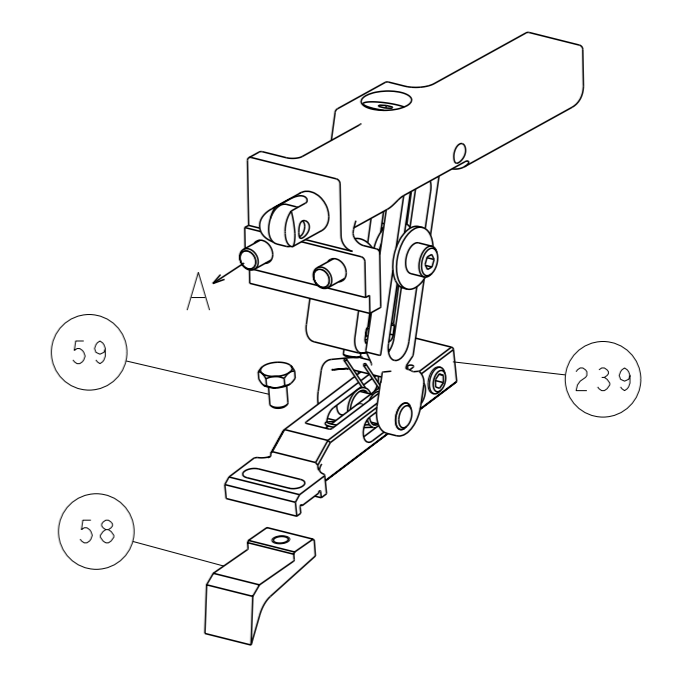
THIS DRAWING IS UNPUBLISHED. IT IS SUBJECT TO CHANGE AND TO BE CONTROLLED BY THE ENGINEERING DEPARTMENT. IT SHOULD BE CONTACTED FOR THE LATEST REVISION.				DWN M. HERR 06JUN2017	TE Connectivity Harrisburg, PA 17105-3608			
DIMENSIONS: mm				CHK T. ELBIN 06JUN2017	NAME Ocean End Feed Applicator			
				APVD T. ELBIN 06JUN2017	PRODUCT SPEC - APPLICATION SPEC -			
MATERIAL -				WEIGHT -		SIZE A 00779	DRAWING NO C=2150812	RESTRICTED TO -
				Customer Accessible Production Drawing				SCALE 1:1
								SHEET 3
								OF 4
								REV C

SHEETS 1 & 2 ARE NOT REQUIRED FOR PACIFIC VERSION

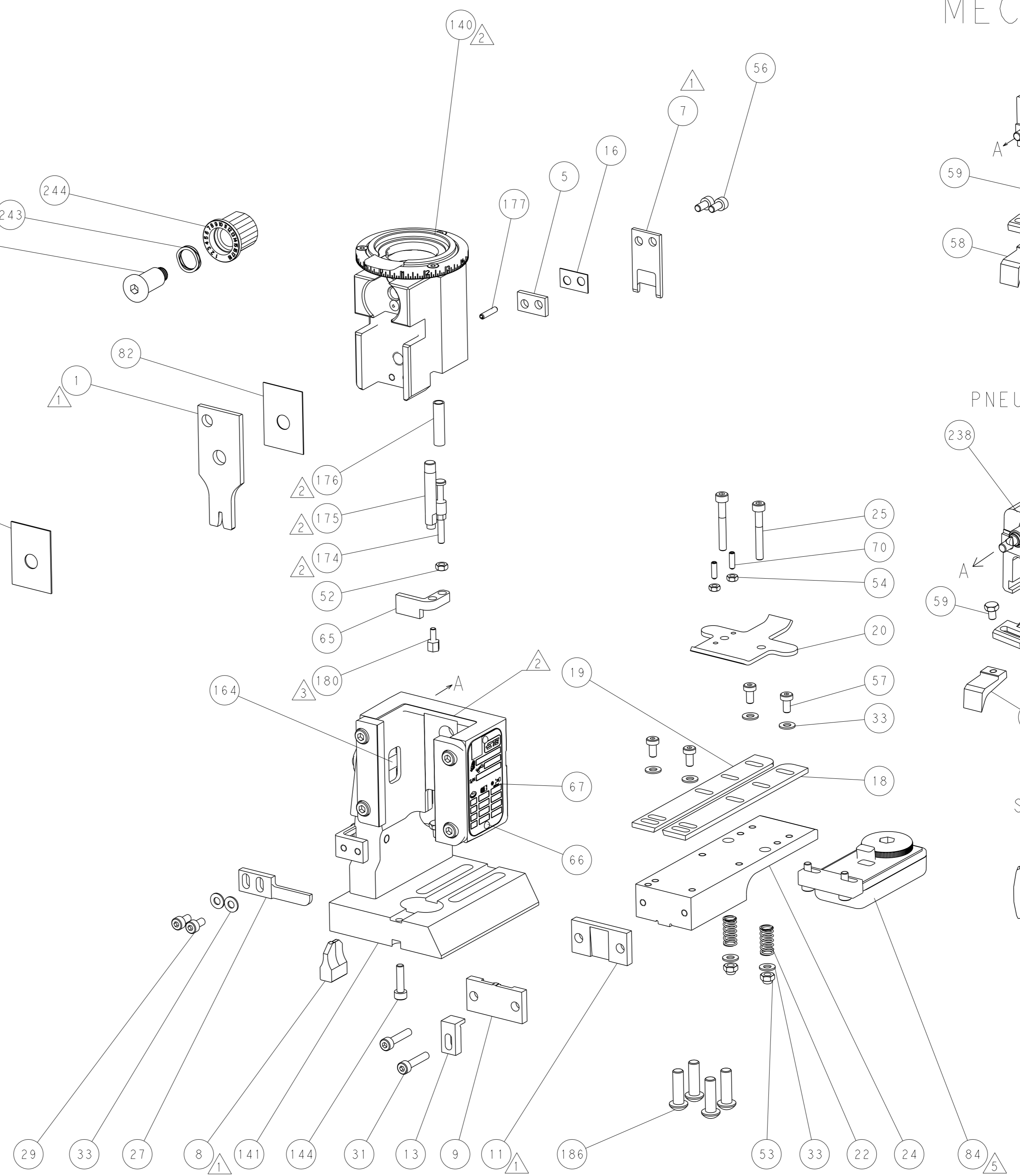
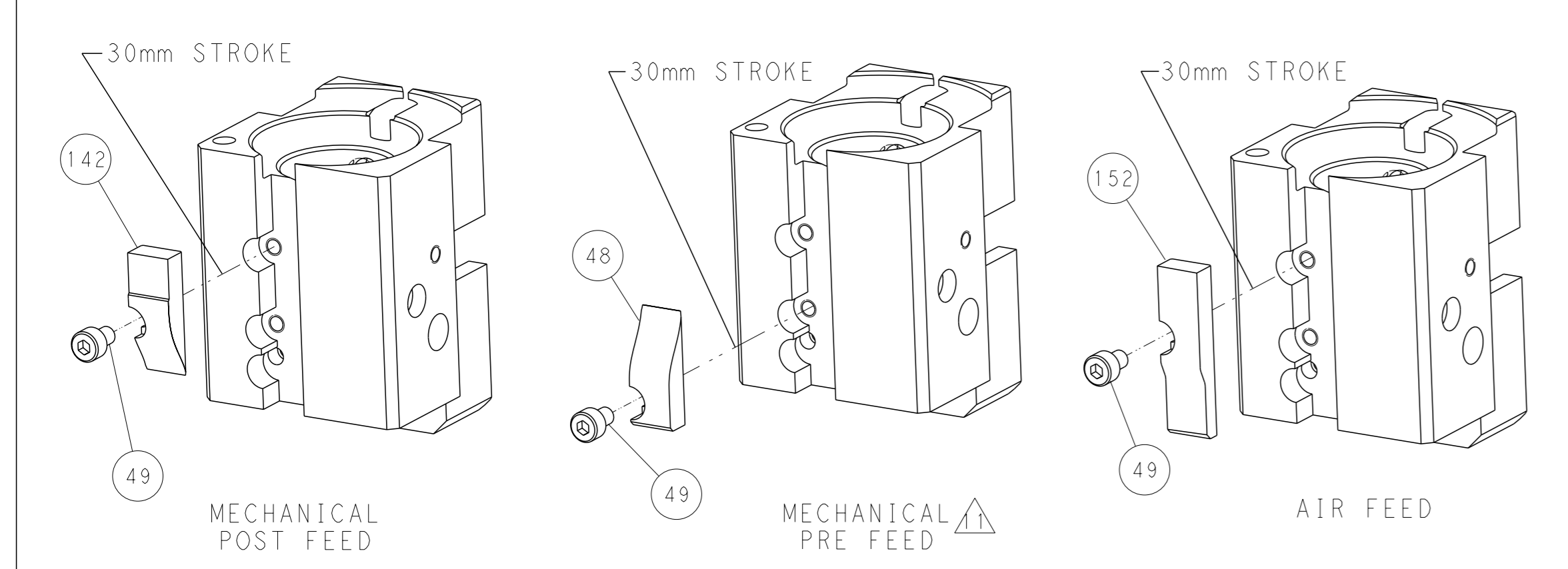


RAM AND HOLDDOWN SET-UP



FEED TYPE
MECHANICAL



CAM POSITIONS



PACIFIC VERSION
Shown on sheets 3 of 4 & 4 of 4
(Atlantic version shown on sheets 1 of 4 & 2 of 4)

THIS DRAWING IS A CONTROLLED DOCUMENT FOR TYCO ELECTRONICS CORPORATION. IT IS SUBJECT TO CHANGE AND TO THE CONTROL AND ENGINEERING ORGANIZATION. CHANGES WILL BE CONTACTED FOR THE LATEST REVISION.				OWN M. HERR	06JUN2017	 TE Connectivity Harrisburg, PA 17105-3608	NAME Ocean End Feed Applicator										
				CHK T. ELBIN	06JUN2017												
				APVD T. ELBIN	06JUN2017												
				PRODUCT SPEC -													
DIMENSIONS:		TOLERANCES UNLESS OTHERWISE SPECIFIED:				SIZE A		CAGE CODE 00779		DRAWING NO C=2150812		RESTRICTED TO -					
mm		0 PLC ±															
		1 PLC ±															
		2 PLC ±															
		3 PLC ±															
		4 PLC ±		APPLICATION SPEC -													
		ANGLES ±															
MATERIAL		FINISH		WEIGHT -													
Customer Accessible Production Drawing										SCALE 1:1		SHEET 4		OF 4		REV C	

Mouser Electronics

Authorized Distributor

Click to View Pricing, Inventory, Delivery & Lifecycle Information:

[TE Connectivity:](#)

[2150812-1](#)