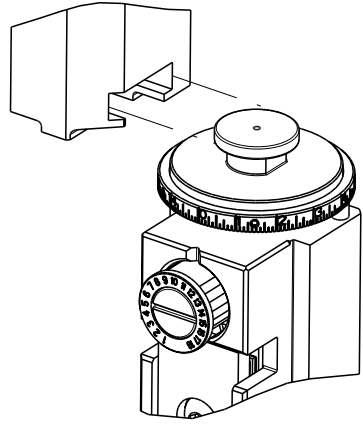


8		7	
THIS DRAWING IS UNPUBLISHED.		RELEASED FOR PUBLICATION	
20		20	
© COPYRIGHT 20		BY TYCO ELECTRONICS CORPORATION. ALL RIGHTS RESERVED.	
PART NUMBER	REVISION	DESCRIPTION	FEED TYPE
2150760-1	C	FINE CRIMP HEIGHT ADJUST	MECHANICAL
2150760-2	C	FINE CRIMP HEIGHT ADJUST	PNEUMATIC
7-2150760-1	C	MECHANICAL AND CRIMP TOOLING KIT	MECHANICAL
7-2150760-2	C	PNEUMATIC AND CRIMP TOOLING KIT	PNEUMATIC
7-2150760-7	A	CRIMP TOOLING KIT	-

ATLANTIC VERSION TERMINATOR
INTERFACE ADAPTER



APPLICATOR DATA		
CRIMP	SIZE	TYPE
WIRE	2.54 mm [.100]	F
INSUL	3.56 mm [.140]	F
APPL INSTRUCTIONS 408-35043		

TERMINAL DATA: TE TERMINAL		TE CRIMP SPECIFICATION	
TERMINAL NAME: RING TOUGUE			
WIRE STRIP LENGTH 3.56-4.36 mm [.140-.172 IN]		INSULATION DIAMETER RANGE Ø1.52-2.79 mm [.060-.110 IN]	
TERMINAL APPLICATION SPECIFICATION		114-2084	
APPLICATION SPECIFICATION		-	
TERMINALS APPLIED			
TE TERMINAL 40697	TE TERMINAL 40698	TE TERMINAL 40732	TE TERMINAL

WIRE SIZE	CRIMP HEIGHT mm [INCH]	CRIMP HEIGHT REFERENCE SETTING
18 AWG	1.50+/-0.05 [1.059+/- .002]	3.5
20 AWG	1.42+/-0.05 [1.056+/- .002]	4.2
22 AWG	1.35+/-0.05 [1.053+/- .002]	4.9



- RECOMMENDED SPARE PARTS
- REFER TO SUPPLIED INSTRUCTION SHEET FOR CLEANING, LUBRICATION AND STORAGE OF APPLICATOR.
- APPLY PART NUMBER 1-23419-5 LOCTITE TO THREADS OF ITEMS 180. APPLY PART NUMBER 2-23419-6 LOCTITE TO THREADS OF ITEM 242.
- CRIMP HEIGHT REFERENCE SETTING WAS THE SETTING USED WHEN THE APPLICATOR WAS QUALIFIED AT THE FACTORY. ADJUSTMENT MAY BE NECESSARY WHEN RUNNING APPLICATOR IN THE FIELD.
- TERMINAL LUBRICANT IS RECOMMENDED.
6. UNLESS SPECIFIED OTHERWISE TORQUE VALUES SHALL BE USED PER DOCUMENT, 101-35000.

*WARNING
ON INSTALLATION, SET WIRE DISC TO CRIMP HEIGHT REFERENCE SETTING FOR LARGEST WIRE SIZE. CRIMP HEIGHT REFERENCE SETTINGS GREATER THAN THE VALUE SHOWN MAY CAUSE DAMAGE TO THE CRIMP TOOLING, REFER TO THE INSTRUCTION SHEET FOR PROPER SETUP AND ADJUSTMENTS.

ATLANTIC VERSION
Shown on sheets 1 of 4 & 2 of 4
(Pacific version shown on sheets 3 of 4 & 4 of 4)

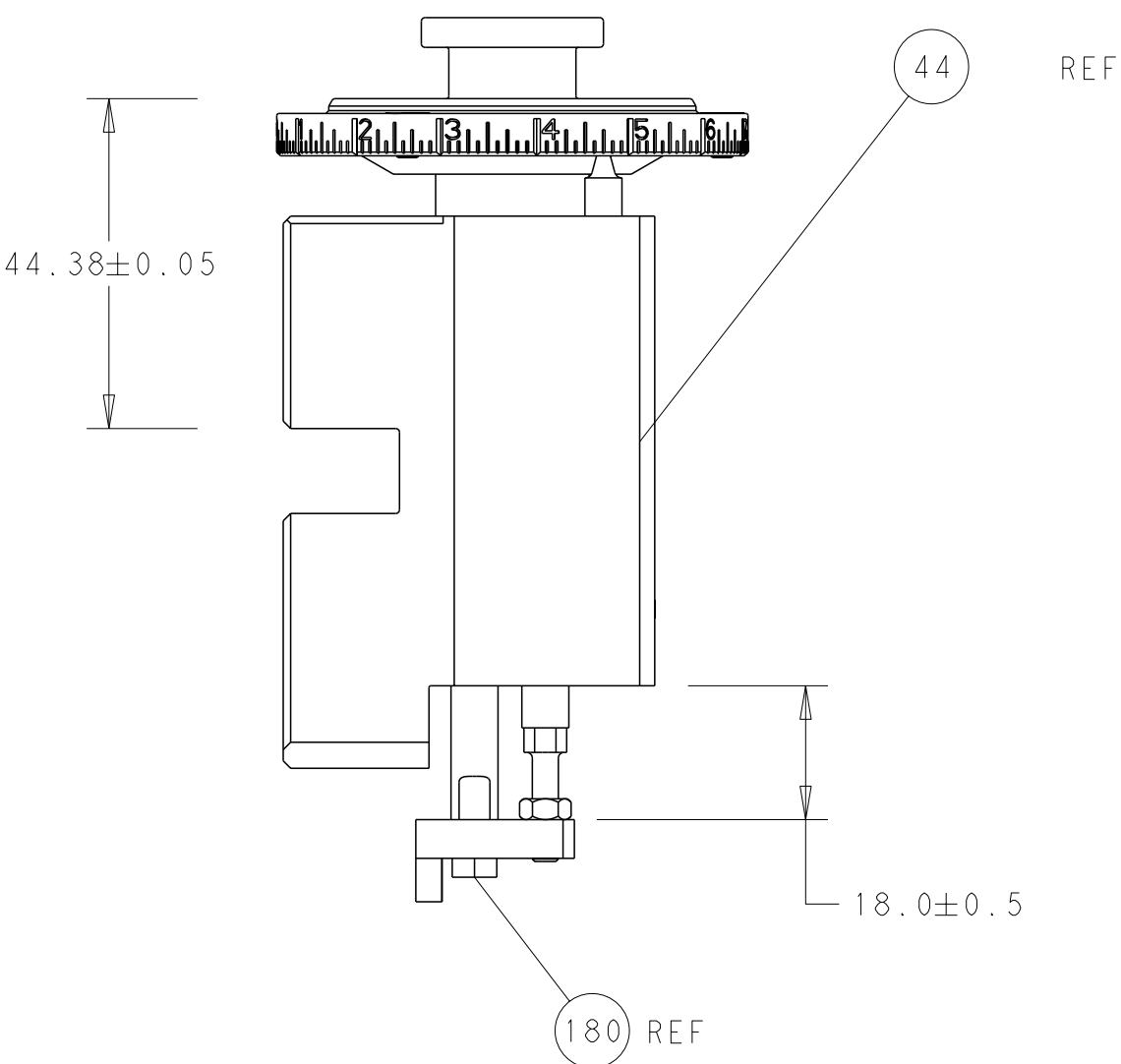
2		1						
LOC	DIST	REVISIONS						
A	66	P	LTR	DESCRIPTION	DATE	DWN	APVD	
		I		DEVELOPMENT	17NOV2016	MZ	KZ	
		A		RELEASED	06JAN2017	TB	GB	
		B		ECR-17-005891	25APR2017	KH	CT	
		C		ECR-19-006660	25APR2019	JAH	TE	

	-	1	-	1	-	2119640-1	PUSH ROD, AIR FEED	250
	-	1	-	1	-	1803259-1	BUSHING, FLANGED	249
	-	1	-	1	-	2119641-1	FEED CAM, AIR FEED	248
	-	1	1	1	1	2119082-7	CAM, SNAIL, INSULATION ADJUSTMENT	244
	-	1	1	1	1	2079764-1	WASHER, WAVE SPRING, CREST-TO-CREST	243
3	-	1	1	1	1	2119083-1	RETAINER, INSULATION DIAL	242
	-	-	1	-	1	2119580-1	MECHANICAL FEED ASSEMBLY	239
	-	1	-	1	-	2063440-1	AIR FEED MODULE	238
	-	1	1	1	1	1-18028-0	WASHER, FLAT, REG M8	192
3	-	1	1	1	1	3-1752354-6	STANDOFF,HOLD-DOWN	180
	-	1	1	1	1	6-993111-6	PIN, SLOTTED SPRING 3.0 X 14.0	177
	-	1	1	1	1	8-22280-7	SPRING, COMPRESSION	176
	-	1	1	1	1	1752353-2	GUIDE PIN,HOLDDOWN	175
	-	1	1	1	1	1901680-2	GUIDE PIN,HOLDDOWN	174
	-	2	-	2	-	21045-3	RING, RETAIN, EXTERN, 3/16 CRESCENT	172
	-	REF	REF	REF	REF	994970-2	COUNTER, MAGNETIC	164
	-	1	-	1	-	240638-1	SPRING, FEED FINGER	163
	-	1	-	1	-	3-23627-7	PIN, RETAIN, GRVD, 3/16 X .854	137
5	-	1	1	1	1	2119955-2	ASSY, LUBRICATOR, END FEED	84
	-	1	1	1	1	455888-4	SPACER, CRIMPER	82
	-	1	1	1	1	1803607-2	DOCUMENTATION PACKAGE	71
	-	2	2	2	2	2-18032-2	SCR, SET, FLT PNT, M3 X 10.0	70
	-	1	1	1	1	2119740-1	TAG,IDENTIFICATION	67
	-	2	2	2	2	2168078-1	SCREW, DRIVE, RH, RoHS, 2 x .188	66
	-	1	1	1	1	1-1901681-8	HOLDDOWN, TERMINAL	65
	-	1	1	1	1	2079383-4	SCR, BHSC, RoHS (M4 X 8)	64
	-	1	1	1	1	2168083-2	SCR, SKT HD CAP, RoHS, M4 X 8.0	60
	-	-	1	-	1	5-18022-5	SCR, HEX HD CAP, M4 X 6.0	59
	-	-	1	-	1	2063961-1	FEED FINGER	58
	-	3	3	3	3	2168400-4	SHCS, LOW HEAD, RoHS, M4 X 8	57
	-	2	2	2	2	2168083-2	SCR, SKT HD CAP, RoHS, M4 X 8.0	56
	-	2	2	2	2	5018030-1	NUT, HEX, REG, RoHS, M3	54
	-	2	2	2	2	986965-8	NUT, LOCK, HEX, TORQUE (M4)	53
	-	1	1	1	1	1-5018030-0	NUT, HEX, REG, RoHS, M3.5	52
	-	1	-	1	-	2119792-2	PAWL, EF, AIR	51
	-	1	2	1	2	18023-9	SCR, SKT HD CAP M4 X 6.0	49
	-	-	1	-	1	2119652-1	FEED CAM, PRE FEED	48
	-	-	1	-	1	2119653-1	FEED CAM, POST FEED	47
	-	1	1	1	1	2119655-5	APPLICATOR BASIC ASSEMBLY, EF	46
	-	1	1	1	1	1803517-1	RAM ASSEMBLY, EF ATLANTIC	44
	-	1	1	1	1	1803602-1	SCR, BHSC, RoHS (M8 X 25)	41
	-	7	7	7	7	1-18028-2	WASHER, FLAT, REG M4	33
	-	2	2	2	2	2168083-9	SCR, SKT HD CAP, RoHS, M4 X 20	31
	-	2	2	2	2	2168083-2	SCR, SKT HD CAP, RoHS, M4 X 8.0	29
	-	1	1	1	1	240639-3	STRIPPER (MACHINING)	27
	-	2	2	2	2	1-2168083-5	SCR, SKT HD CAP, RoHS, M4 X 30	25
	-	1	1	1	1	1752371-2	PLATE, STRIP GUIDE	24
	-	2	2	2	2	2-22281-3	SPRING, COMPRESSION	22
	-	1	1	1	1	1803292-4	DRAG	20
	-	1	1	1	1	1901696-3	STRIP GUIDE, REAR	19
	-	1	1	1	1	1901695-3	STRIP GUIDE, FRONT	18
	-	4	4	4	4	1-2079383-1	SCR, BHSC, RoHS (M6 X 12)	17
1	-	1	1	1	1	691901-2	REAR SHEAR PLATE, REVERSIBLE	11
	-	2	2	2	2	1-240645-6	SPACER, SHEAR PLATE	10
1	-	1	1	1	1	240642-8	PLATE, FRONT SHEAR	9
1	1	2	2	1	1	2-1803257-1	ANVIL, COMBINATION, END FEED	8
1	-	1	1	1	1	2-691157-6	BLADE, SHEAR -	7
	-	-	-	-	-	-	-	6
	-	1	1	1	1	1-240641-6	SPACER	5
	-	1	1	1	1	4-238011-4	BLOCK, CRIMPER SPACER	4
1	1	2	2	1	1	7-1803187-6	CRIMPER, INSULATION F	3
	-	1	1	1	1	455888-1	SPACER, CRIMPER	2
1	1	2	2	1	1	456407-1	CRIMPER, WIRE PREMIUM	1
	-77	-72	-71	-2	-1	PART NO	DESCRIPTION	ITEM NO

THIS DRAWING IS UNPUBLISHED. IT IS SUBJECT TO CHANGE AND TO BE CONTROLLED BY THE ENGINEERING ORGANIZATION. IT SHOULD BE CONTACTED FOR THE LATEST REVISION.				DWN M. ZHAO 17NOV2016	TE Connectivity Harrisburg, PA 17105-3608		
DIMENSIONS: mm				CHK K. ZHANG 17NOV2016	NAME		
TOLERANCES UNLESS OTHERWISE SPECIFIED: 0 PLC ± 1 PLC ± 2 PLC ± 3 PLC ± 4 PLC ± ANGLES ± FINISH -				APVD K. ZHANG 17NOV2016	PRODUCT SPEC		
MATERIAL -					APPLICATION SPEC		
					WEIGHT -		
					SIZE A1		
					CASE CODE 00779		
					DRAWING NO C=2150760		
					RESTRICTED TO -		
					Customer Accessible Production Drawing		
					SCALE 1:1		
					SHEET 1		
					OF 4		
					REV C		

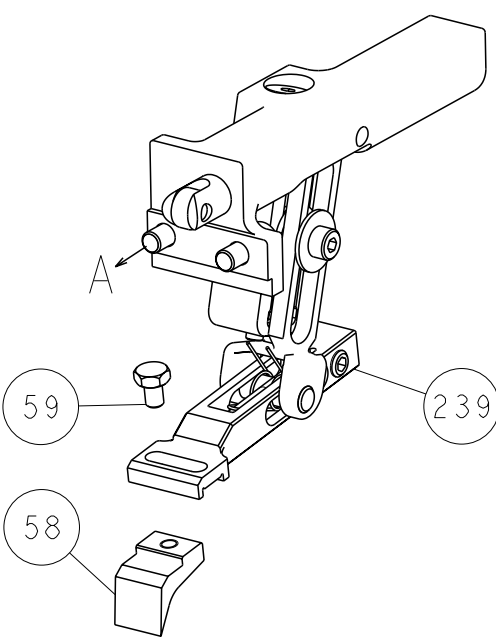
SHEETS 3 & 4 ARE NOT REQUIRED FOR ATLANTIC VERSION

LOC		DIST		REVISIONS			
A	66	P	LYR	DESCRIPTION	DATE	DWN	APVD
		-		SEE SHEET 1	-	-	-

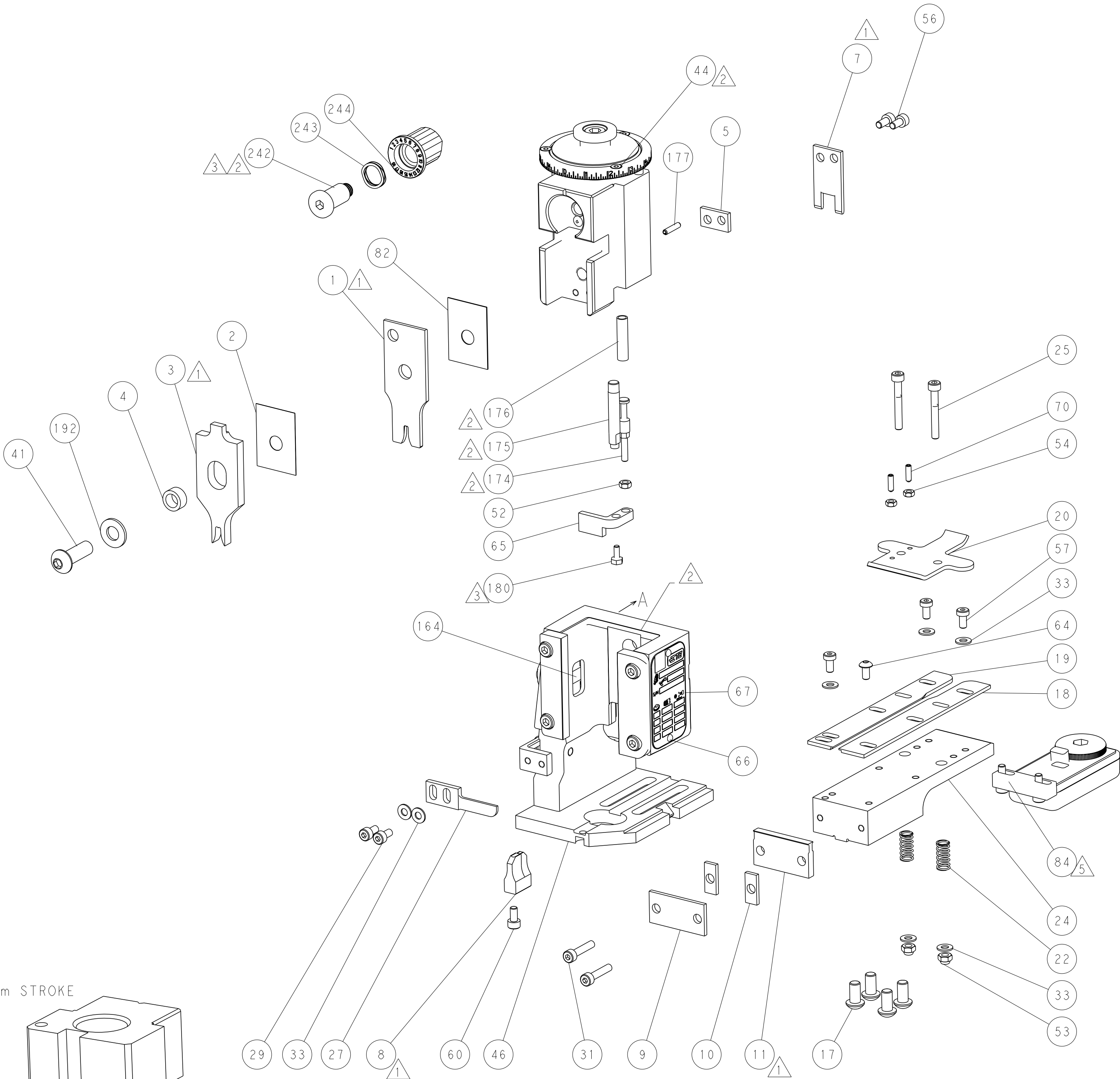
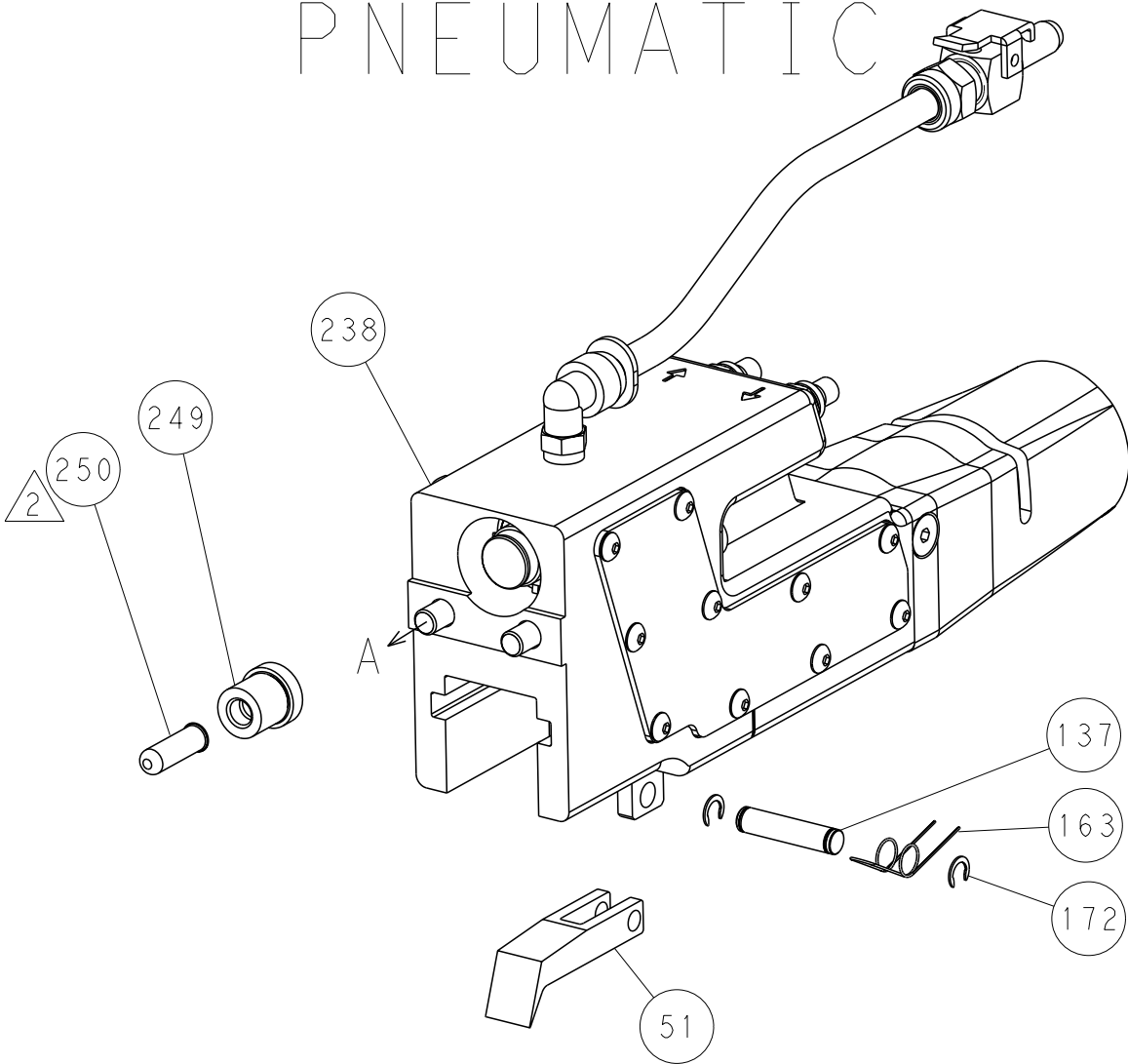


RAM AND HOLDDOWN SET-UP

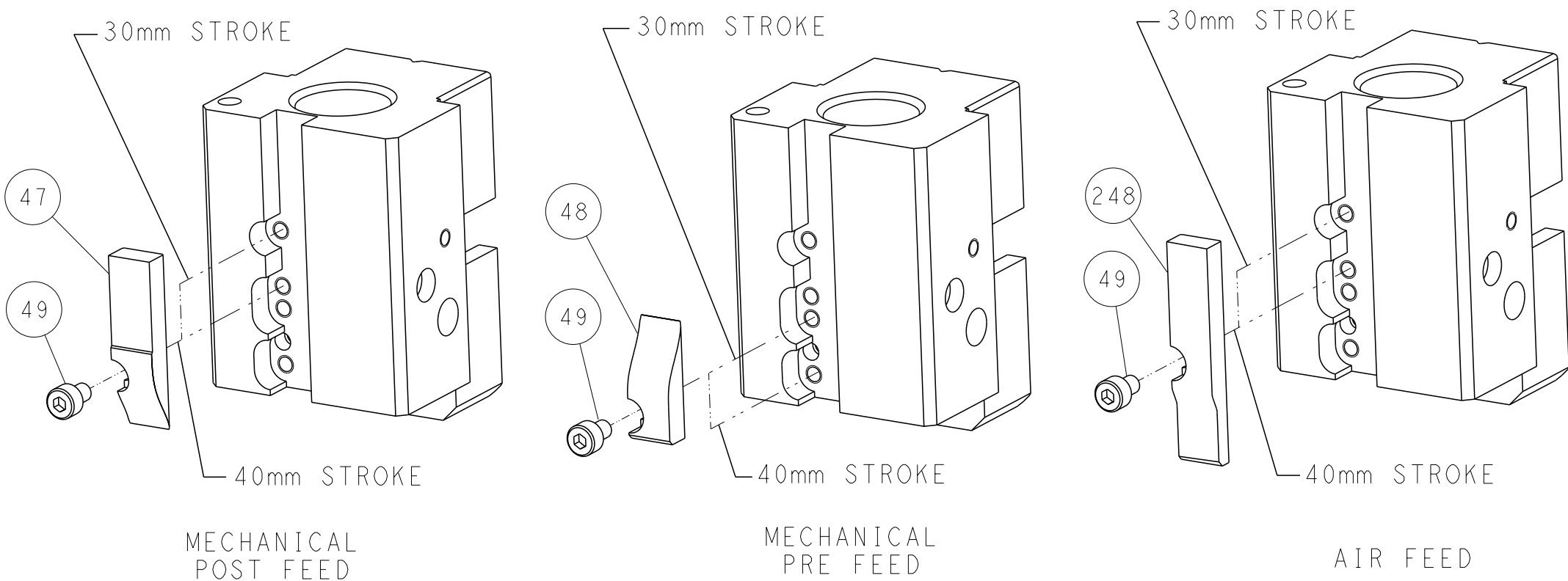
FEED TYPE
MECHANICAL



PNEUMATIC



CAM POSITIONS

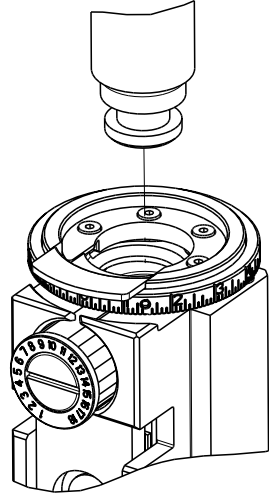


ATLANTIC VERSION
Shown on sheets 1 of 4 & 2 of 4
(Pacific version shown on sheets 3 of 4 & 4 of 4)

THIS DRAWING IS A CONTROLLED DOCUMENT FOR TYCO ELECTRONICS CORPORATION. IT IS SUBJECT TO CHANGE AND TO THE CONTROL AND ENGINEERING ORGANIZATION. SHOULD BE CONTACTED FOR THE LATEST REVISION.		DWN M. ZHAO 17NOV2016	TE Connectivity Harrisburg, PA 17105-3608	
DIMENSIONS: mm		CHK K. ZHANG 17NOV2016	NAME Ocean End Feed Applicator	
TOLERANCES UNLESS OTHERWISE SPECIFIED: 0 PLC ± 1 PLC ± 2 PLC ± 3 PLC ± 4 PLC ± ANGLES ±		APVD K. ZHANG 17NOV2016	PRODUCT SPEC	
MATERIAL		FINISH	APPLICATION SPEC	
-		-	SIZE A1 00779 ©=2150760	
-		-	RESTRICTED TO	
Customer Accessible Production Drawing		SCALE 1:1	SHEET 2 of 4	REV C

8		7	
THIS DRAWING IS UNPUBLISHED.		RELEASED FOR PUBLICATION	
20		20	
© COPYRIGHT 20 BY TYCO ELECTRONICS CORPORATION. ALL RIGHTS RESERVED.			
PART NUMBER	REVISION	DESCRIPTION	FEED TYPE
2-2150760-1	C	FINE CRIMP HEIGHT ADJUST	MECHANICAL
2-2150760-2	C	FINE CRIMP HEIGHT ADJUST	PNEUMATIC
7-2150760-7	A	CRIMP TOOLING KIT	-

PACIFIC VERSION TERMINATOR
INTERFACE ADAPTER



APPLICATOR DATA		
CRIMP	SIZE	TYPE
WIRE	2.54 mm [.100]	F
INSUL	3.56 mm [.140]	F
APPL INSTRUCTIONS 408-35043		

TERMINAL DATA: TE TERMINAL		TE CRIMP SPECIFICATION	
TERMINAL NAME: RING TOUGUE			
WIRE STRIP LENGTH 3.56-4.36 mm [.140-.172 IN]		INSULATION DIAMETER RANGE Ø1.52-2.79 mm [.060-.110 IN]	
TERMINAL APPLICATION SPECIFICATION	114-2084	-	-
TERMINALS APPLIED 5			
TE TERMINAL 40697	TE TERMINAL 40698	TE TERMINAL 40732	TE TERMINAL

WIRE SIZE		CRIMP HEIGHT mm [INCH]		CRIMP HEIGHT REFERENCE SETTING
18 AWG		1.50+/-0.05 [.059+/- .002]		3.5
20 AWG		1.42+/-0.05 [.056+/- .002]		4.2
22 AWG		1.35+/-0.05 [.053+/- .002]		4.9



RECOMMENDED SPARE PARTS

REFER TO SUPPLIED INSTRUCTION SHEET FOR CLEANING, LUBRICATION AND STORAGE OF APPLICATOR.

APPLY PART NUMBER 1-23419-5 LOCTITE TO THREADS OF ITEMS 180. APPLY PART NUMBER 2-23419-6 LOCTITE TO THREADS OF ITEM 242.

CRIMP HEIGHT REFERENCE SETTING WAS THE SETTING USED WHEN THE APPLICATOR WAS QUALIFIED AT THE FACTORY. ADJUSTMENT MAY BE NECESSARY WHEN RUNNING APPLICATOR IN THE FIELD.

TERMINAL LUBRICANT IS RECOMMENDED.

6. UNLESS SPECIFIED OTHERWISE TORQUE VALUES SHALL BE USED PER DOCUMENT, 101-35000.


*WARNING

ON INSTALLATION, SET WIRE DISC TO CRIMP HEIGHT REFERENCE SETTING FOR LARGEST WIRE SIZE. CRIMP HEIGHT REFERENCE SETTINGS GREATER THAN THE VALUE SHOWN MAY CAUSE DAMAGE TO THE CRIMP TOOLING, REFER TO THE INSTRUCTION SHEET FOR PROPER SETUP AND ADJUSTMENTS.

PACIFIC VERSION
Shown on sheets 3 of 4 & 4 of 4
(Atlantic version shown on sheets 1 of 4 & 2 of 4)

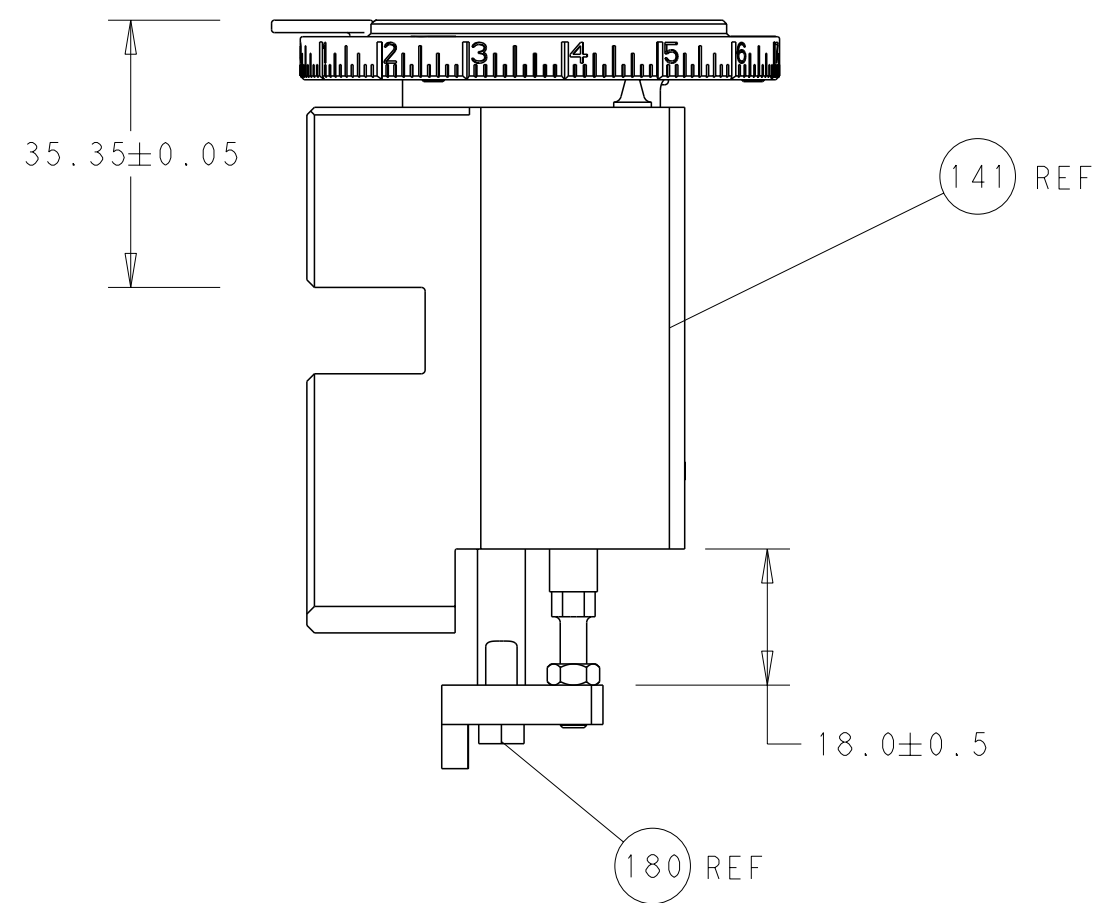
2		1						
LOC	DIST	REVISIONS						
A	66	P	LYR	DESCRIPTION	DATE	DWN	APVD	
		-		SEE SHEET 1	-	-	-	

3	-	1	-	2119640-1	PUSH ROD, AIR FEED	250
	-	1	-	1803259-1	BUSHING, FLANGED	249
	-	1	1	2119082-7	CAM, SNAIL, INSULATION ADJUSTMENT	244
	-	1	1	2079764-1	WASHER, WAVE SPRING, CREST-TO-CREST	243
	-	1	1	2119083-1	RETAINER, INSULATION DIAL	242
3	-	-	1	2119580-1	MECHANICAL FEED ASSEMBLY	239
	-	1	-	2063440-1	AIR FEED MODULE	238
	-	1	1	1-18028-0	WASHER, FLAT, REG M8	192
	-	4	4	2079383-9	SCR, BHSC, RoHS (M6 X 20)	186
	-	1	1	3-1752354-6	STANDOFF, HOLD-DOWN	180
5	-	1	1	6-9931111-6	PIN, SLOTTED SPRING 3.0 X 14.0	177
	-	1	1	8-22280-7	SPRING, COMPRESSION	176
	-	1	1	1752353-2	GUIDE PIN, HOLDDOWN	175
	-	1	1	1901680-2	GUIDE PIN, HOLDDOWN	174
	-	2	-	21045-3	RING, RETAIN, EXTERN, 3/16 CRESCENT	172
5	-	REFREF		994970-2	COUNTER, MAGNETIC	164
	-	1	-	240638-1	SPRING, FEED FINGER	163
	-	1	-	2119641-2	FEED CAM, AIR FEED	152
	-	1	1	2168083-8	SCR, SKT HD CAP, RoHS, M4 X 16	144
	-	-	1	2119653-2	FEED CAM, POST FEED	142
5	-	1	1	2119655-6	APPLICATOR BASIC ASSEMBLY, EF	141
	-	1	1	1803518-1	RAM ASSEMBLY, EF PACIFIC	140
	-	1	-	3-23627-7	PIN, RETAIN, GRVD, 3/16 X .854	137
	-	1	1	2119955-2	ASSY, LUBRICATOR, END FEED	84
	-	1	1	455888-4	SPACER, CRIMPER	82
5	-	1	1	1803607-2	DOCUMENTATION PACKAGE	71
	-	2	2	2-18032-2	SCR, SET, FLT PNT, M3 X 10.0	70
	-	1	1	2119740-1	TAG, IDENTIFICATION	67
	-	2	2	2168078-1	SCREW, DRIVE, RH, RoHS, 2 x .188	66
	-	1	1	1-1901681-8	HOLDDOWN, TERMINAL	65
5	-	1	1	2079383-4	SCR, BHSC, RoHS (M4 X 8)	64
	-	-	1	5-18022-5	SCR, HEX HD CAP, M4 X 6.0	59
	-	-	1	2063961-1	FEED FINGER	58
	-	3	3	2168400-4	SHCS, LOW HEAD, RoHS, M4 X 8	57
	-	2	2	2168083-2	SCR, SKT HD CAP, RoHS, M4 X 8.0	56
5	-	2	2	5018030-1	NUT, HEX, REG, RoHS, M3	54
	-	2	2	986965-8	NUT, LOCK, HEX, TORQUE (M4)	53
	-	1	1	1-5018030-0	NUT, HEX, REG, RoHS, M3.5	52
	-	1	-	2119792-2	PAWL, EF, AIR	51
	-	1	2	18023-9	SCR, SKT HD CAP M4 X 6.0	49
5	-	-	1	2119652-1	FEED CAM, PRE FEED	48
	-	1	1	1803602-1	SCR, BHSC, RoHS (M8 X 25)	41
	-	7	7	1-18028-2	WASHER, FLAT, REG M4	33
	-	2	2	2168083-9	SCR, SKT HD CAP, RoHS, M4 X 20	31
	-	2	2	2168083-2	SCR, SKT HD CAP, RoHS, M4 X 8.0	29
5	-	1	1	240639-3	STRIPPER (MACHINING)	27
	-	2	2	1-2168083-5	SCR, SKT HD CAP, RoHS, M4 X 30	25
	-	1	1	1752371-2	PLATE, STRIP GUIDE	24
	-	2	2	2-22281-3	SPRING, COMPRESSION	22
	-	1	1	1803292-4	DRAG	20
5	-	1	1	1901696-3	STRIP GUIDE, REAR	19
	-	1	1	1901695-3	STRIP GUIDE, FRONT	18
	-	1	1	691901-2	REAR SHEAR PLATE, REVERSIBLE	11
	-	2	2	1-240645-6	SPACER, SHEAR PLATE	10
	-	1	1	240642-8	PLATE, FRONT SHEAR	9
5	1	1	1	2-1803257-1	ANVIL, COMBINATION, END FEED	8
	-	1	1	2-691157-6	BLADE, SHEAR -	7
	-	-	-	-	-	6
	-	1	1	1-240641-6	SPACER	5
	-	1	1	4-238011-4	BLOCK, CRIMPER SPACER	4
5	1	1	1	7-1803187-6	CRIMPER, INSULATION F	3
	-	1	1	455888-1	SPACER, CRIMPER	2
	1	1	1	456407-1	CRIMPER, WIRE PREMIUM	1
	-	77-22-21		PART NO	DESCRIPTION	ITEM NO

THIS DRAWING IS CONTROLLED FOR THE ENTIRE DRAWING. ANY CHANGES TO THE DRAWING MUST BE APPROVED BY THE DESIGN ENGINEER. ANY CHANGES TO THE DRAWING MUST BE APPROVED BY THE DESIGN ENGINEER. ANY CHANGES TO THE DRAWING MUST BE APPROVED BY THE DESIGN ENGINEER.				DWN M. ZHAO 17NOV2016	TE Connectivity Harrisburg, PA 17105-3608						
DIMENSIONS:				CHK K. ZHANG 17NOV2016	NAME						
mm				APVD K. ZHANG 17NOV2016	PRODUCT SPEC APPLICATION SPEC SIZE CAGE CODE DRAWING NO. A 00779 C=2150760						
				Ocean End Feed Applicator -							
0 P L C ±											
1 P L C ±											
2 P L C ±											
3 P L C ±											
4 P L C ±											
ANGLES ±				RESTRICTED TO							
FINISH -				WEIGHT -							
MATERIAL -				-							
Customer Accessible Production Drawing						SCALE 1:1		SHEET 3 of 4		REV C	

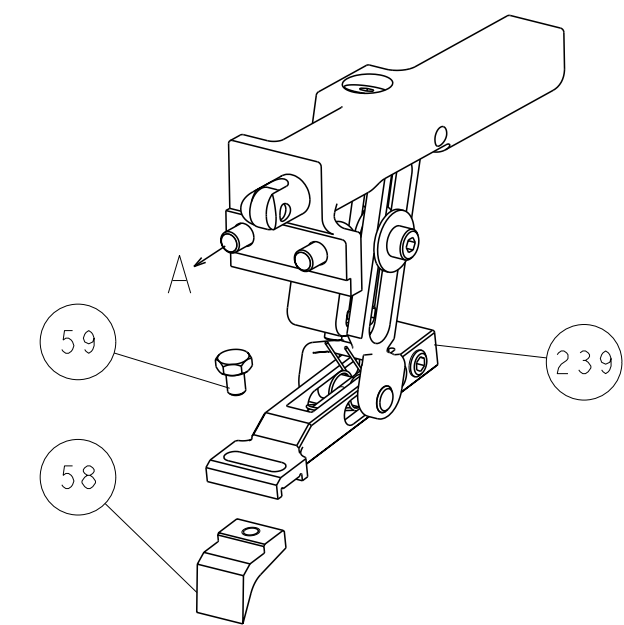
SHEETS 1 & 2 ARE NOT REQUIRED FOR PACIFIC VERSION

LOC		DIST		REVISONS			
A	66	P	LYR	DESCRIPTION	DATE	DWN	APVD
		-		SEE SHEET 1	-	-	-

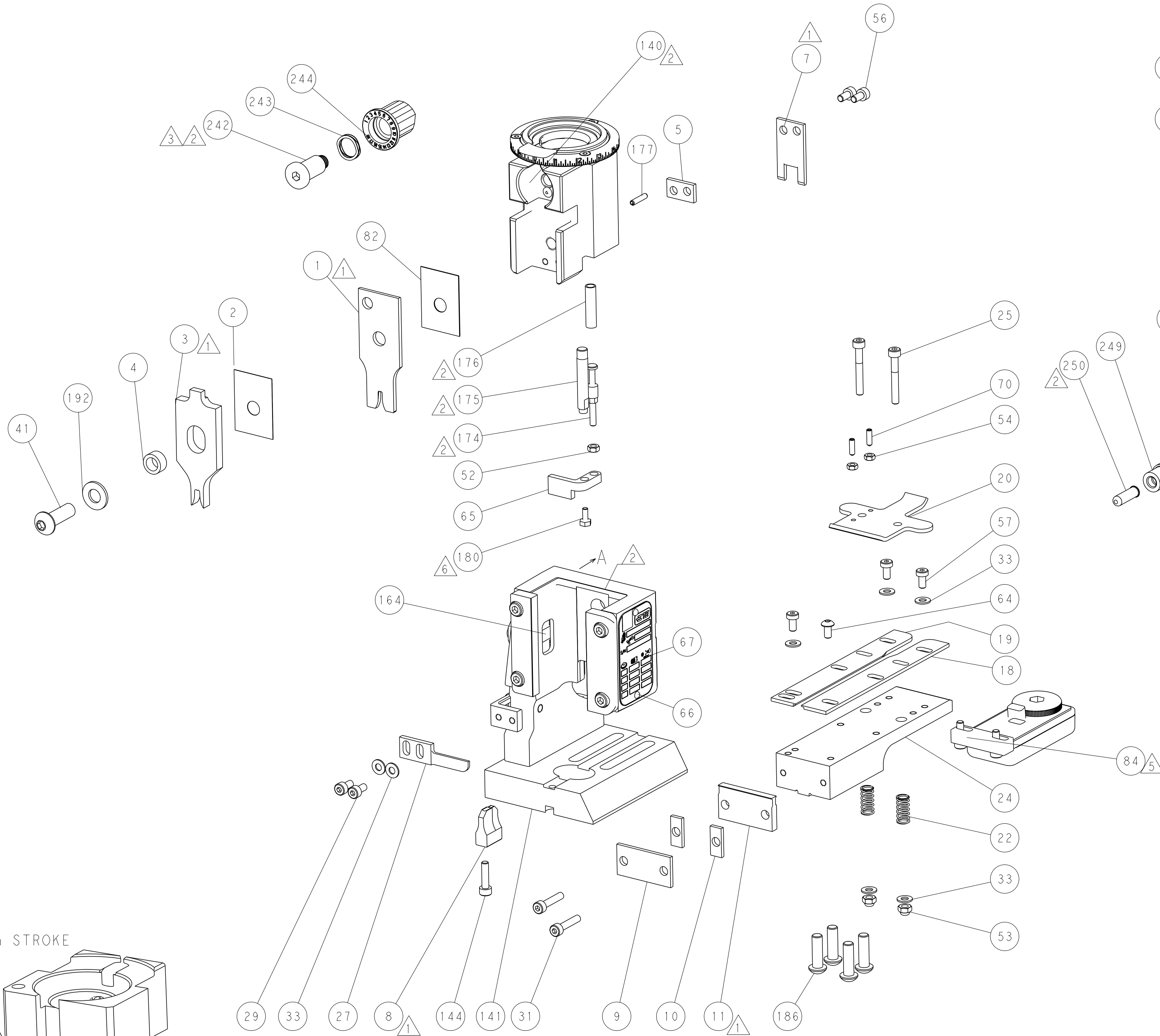
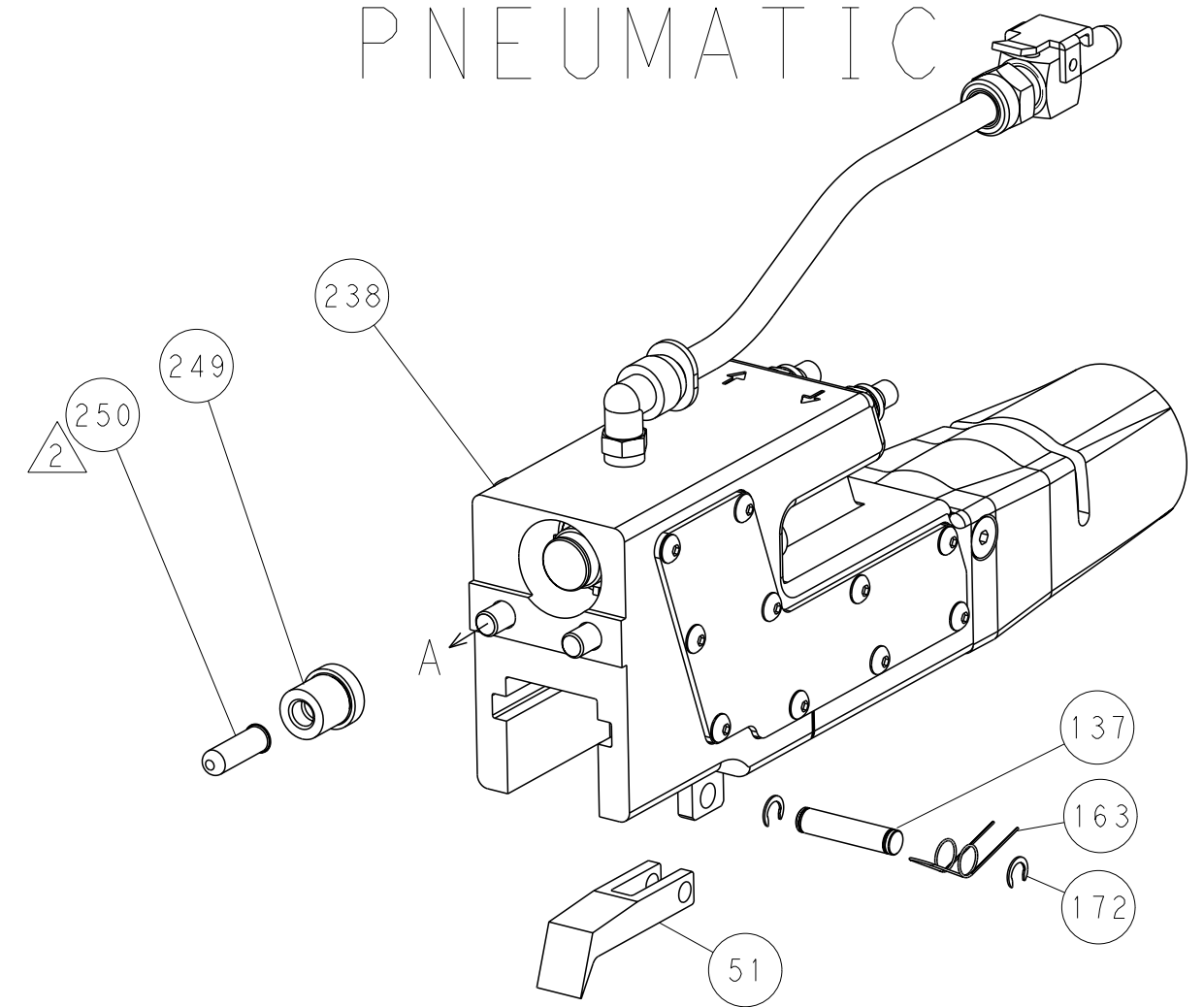


RAM AND HOLDDOWN SET-UP

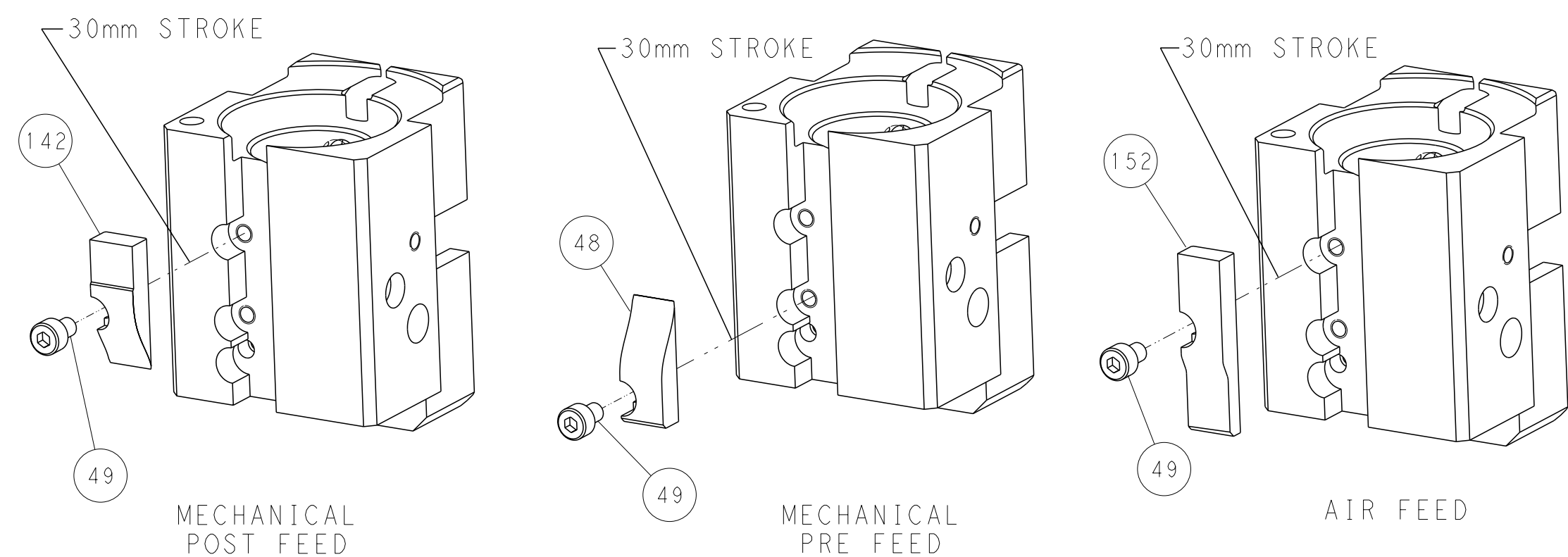
FEED TYPE
MECHANICAL



PNEUMATIC



CAM POSITIONS



PACIFIC VERSION
Shown on sheets 3 of 4 & 4 of 4
(Atlantic version shown on sheets 1 of 4 & 2 of 4)

THIS DRAWING IS A CONTROLLED DOCUMENT FOR TYCO ELECTRONICS CORPORATION IT IS SUBJECT TO CHANGE AND TO CONTROL AND ENGINEERING ORGANIZATION SHOULD BE CONTACTED FOR THE LATEST REVISION				DWN M. ZHAO 17NOV2016	TE Connectivity Harrisburg, PA 17105-3608		
				CHK K. ZHANG 17NOV2016			
				APVD K. ZHANG 17NOV2016	NAME Ocean End Feed Applicator		
				PRODUCT SPEC			
				APPLICATION SPEC			
				WEIGHT			
				Customer Accessible Production Drawing			
				SCALE			
				SHEET			
				OF			
				REV			

Mouser Electronics

Authorized Distributor

Click to View Pricing, Inventory, Delivery & Lifecycle Information:

[TE Connectivity:](#)

[2150760-1](#)