

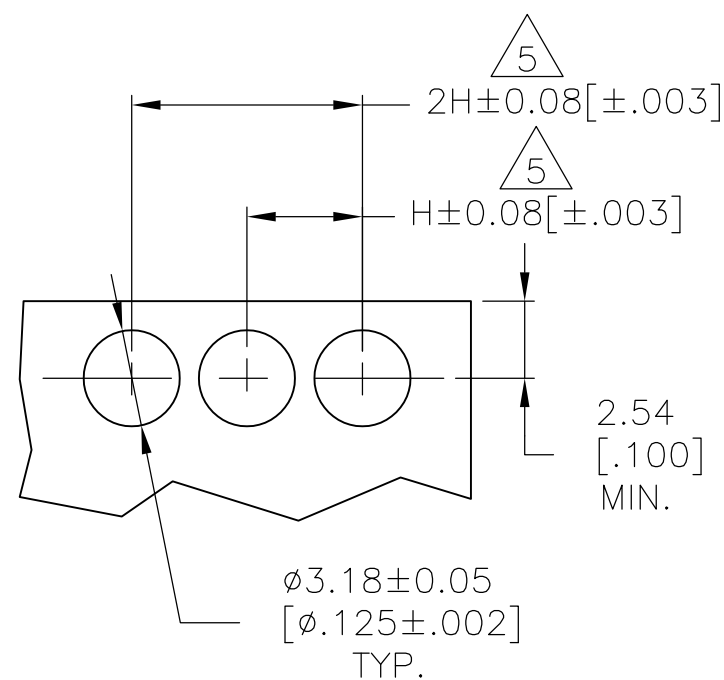
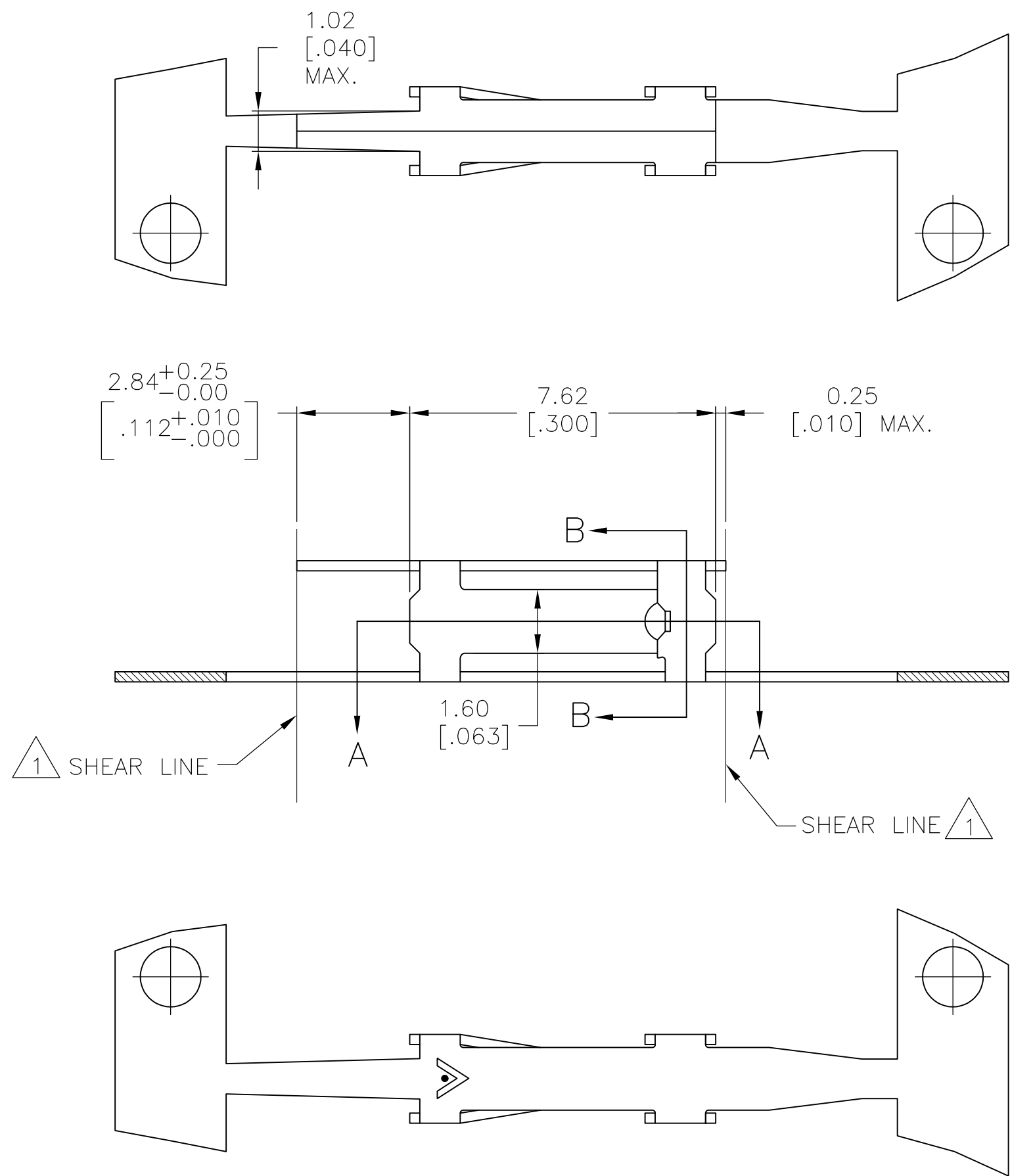
LOC	DIST	REVISIONS					
		P	LTR	DESCRIPTION	DATE	DWN	APVD
AD	39		G1	REVISED PER ECO-11-005806	22MAR11	HMR	JO

D

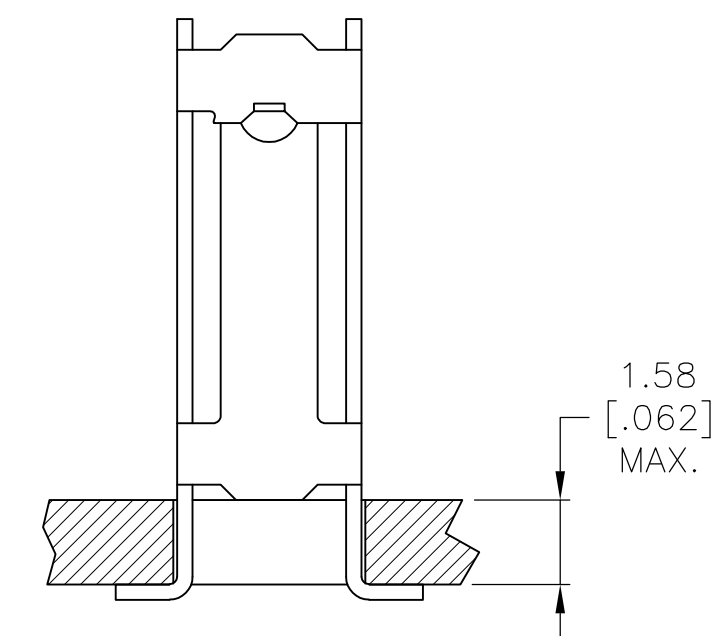
C

B

A

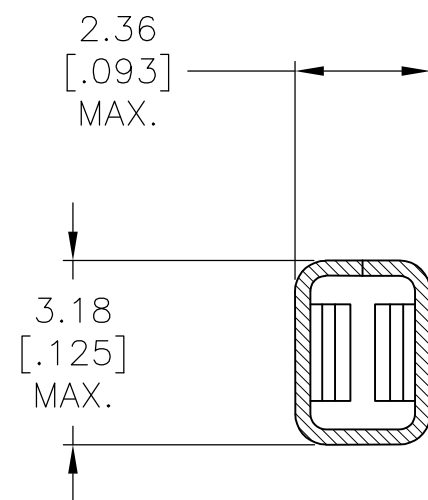


RECOMMENDED P.C.  
BOARD LAYOUT

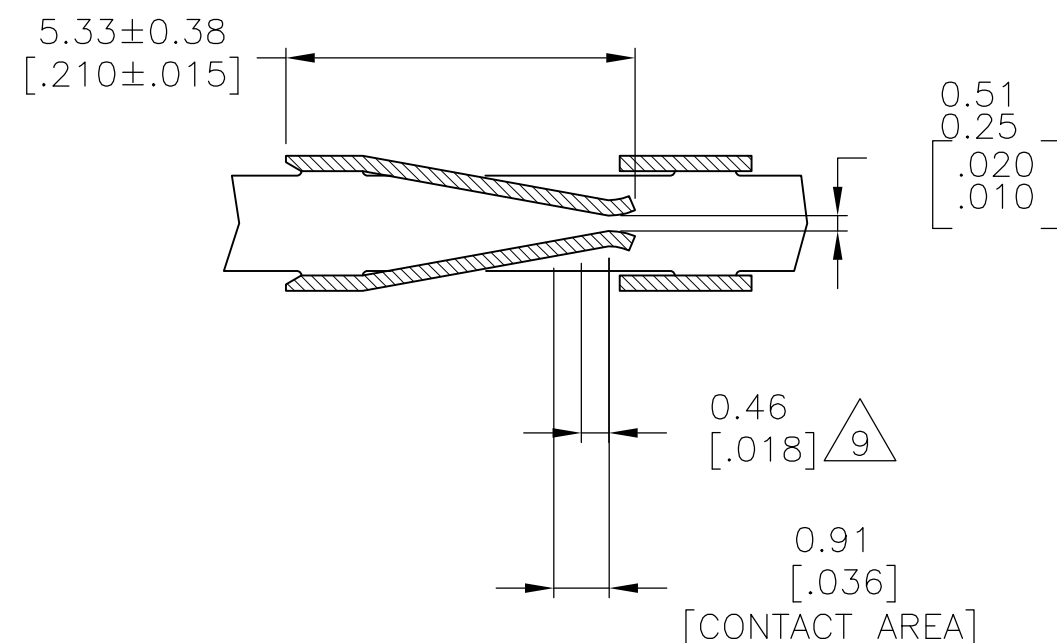


TYPICAL APPLICATION

- 1 SHEAR LINES DEFINE LOOSE PIECE PART.
- 2 FOR USE WITH AMPMODU MINIATURE APPLICATOR.
- 3 CONTACT MATERIAL: 0.25[.010] COMMERCIAL PHOSPHOR BRONZE.
- 4 GOLD FLASH OVER 0.00127[.000050] NICKEL ENTIRE CONTACT, 0.00038[.000015] GOLD ON CONTACT AREA
- 5 "H", (RECEPTACLE CENTERS) MAY VARY DEPENDING ON REQUIREMENTS, MINIMUM NOMINAL CENTER SPACING BETWEEN ADJACENT RECEPTACLES IS 3.81±0.08[.150±.003]
- 6 0.00200 [.000079] MIN TIN.
- 7 0.00038[.000015] GOLD IN CONTACT AREA, 0.00254-0.00508[.000100-.000200] BRIGHT TIN-LEAD IN TERMINATION AREA, ALL OVER 0.00127[.000050] NICKEL.
- 8 0.00076[.000030] GOLD IN CONTACT AREA, 0.00254-0.00508[.000100-.000200] BRIGHT TIN-LEAD IN TERMINATION AREA, ALL OVER 0.00127[.000050] NICKEL.
- 9 POINT OF MEASUREMENT FOR PLATING THICKNESS.





SECTION B-B



SECTION A-A

	—	6	3	87316-7
OBSOLETE	87509-4	8	3	87316-5
OBSOLETE	87509-3	7	3	87316-4
	87509-2	6	3	87316-3
	—	—	—	—
OBSOLETE	87509-1	4	3	87316-1
	LOOSE PIECE PART NO	FINISH	MATERIAL	PART NUMBER

THIS DRAWING IS A CONTROLLED DOCUMENT.			DWN E. BRANDBERG 7-14-94	 Tyco Electronics Corporation Harrisburg, PA 17105-3608						
DIMENSIONS: mm [INCHES]			CHK J. HERRINGTON 7-14-94							
		TOLERANCES UNLESS OTHERWISE SPECIFIED:	APVD J. HERRINGTON 7-14-94	NAME  FEMALE CONTACT, MOD I, TYPE A, HIGH PRESSURE						
		0 PLC ± —	PRODUCT SPEC							
		1 PLC ± —	—							
		2 PLC ± —	APPLICATION SPEC							
		3 PLC ± 0.13[.005]	—							
		4 PLC ± —	—	SIZE	CAGE CODE	DRAWING NO	RESTRICTED TO			
MATERIAL		FINISH	WEIGHT	A2 00779 C-87316				—		
SEE TABLE		SEE TABLE	CUSTOMER DRAWING					SCALE 8:1	SHEET 1 of 1	REV G1

# Mouser Electronics

Authorized Distributor

Click to View Pricing, Inventory, Delivery & Lifecycle Information:

[TE Connectivity:](#)

[87316-3](#)