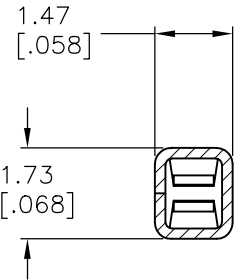
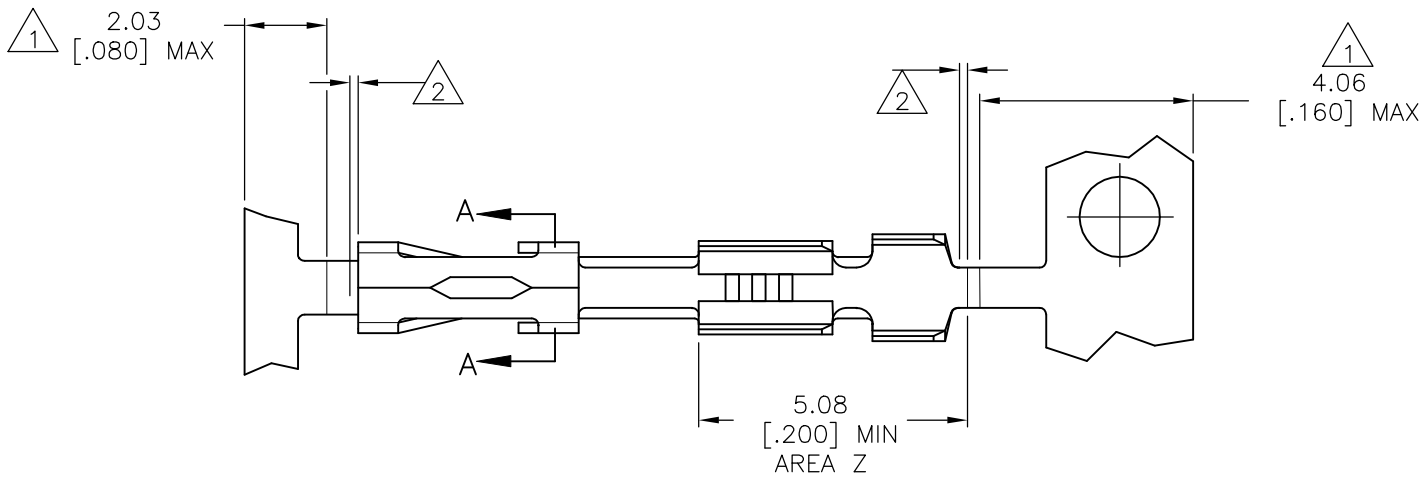
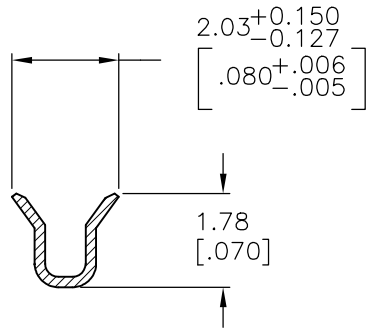


REVISIONS				
#	LTR	DESCRIPTION	DATE	DWN APVD
	L1	REV PER ECO-09-021826	09SEP09	KK AEG
	L2	REVISED PER ECO-17-017495	04DEC2017	RS DR

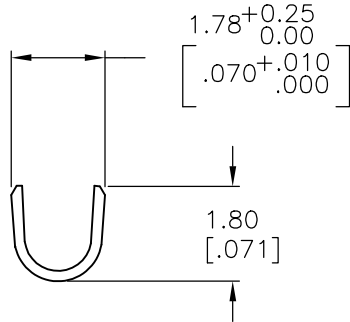


SECTION A—A

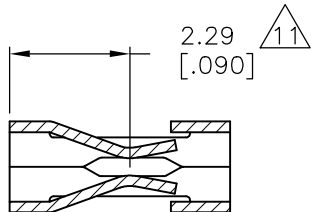
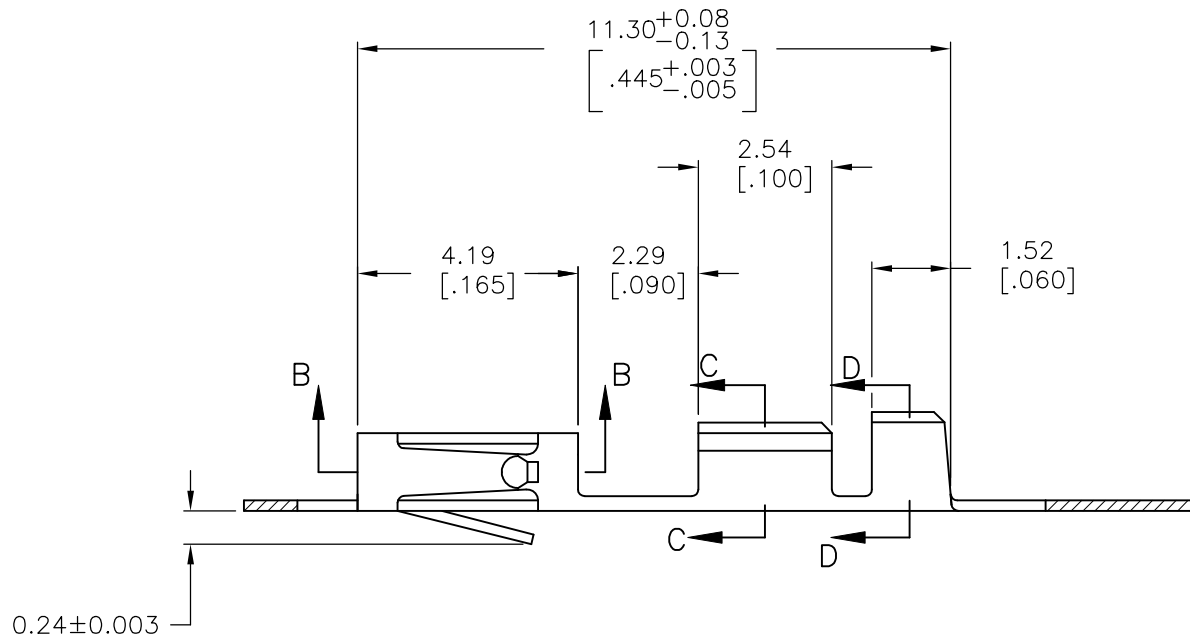


WIRE SIZE: #26-#30

SECTION C—C



INSULATION RANGE: .048 MAX  
SECTION D—D



SECTION B—B

- 1 GOLD PLATING NOT REQUIRED IN THIS AREA.
- 2 .006 MAX LOOSE PIECE CUT OFF.
- 3 .000050-.000150 PREPLATED BRIGHT TIN.
- 4 .000030 GOLD IN CONTACT AREA, GOLD FLASH ON THE REMAINDER, OVER .000050 NICKEL.
- 5 .000030 GOLD OVER .000050 NICKEL, ENTIRE CONTACT.
- 6 .000050 GOLD OVER .000050 NICKEL, ENTIRE CONTACT.
- 7 .000015 GOLD IN CONTACT AREA, GOLD FLASH ON THE REMAINDER, OVER .000050 NICKEL.
- 8 .000015 GOLD IN CONTACT AREA, .000100 - .000200 BRIGHT TIN-LEAD IN AREA Z, ALL OVER .000050 NICKEL.
- 9 .000030 GOLD IN CONTACT AREA, .000100 - .000200 BRIGHT TIN-LEAD IN AREA Z, ALL OVER .000050 NICKEL.
- 10 SHEARED EDGES PERMITTED TO BE UNPLATED.
- 11 POINT OF MEASUREMENT FOR PLATING THICKNESS (INSIDE BEAMS).
- 12 OBSOLETE PART NUMBERS.
- 13 OBSOLETE PARTS: OBSOLETE CIS STREAMLINING PER D.RENAUD/D.SINISI

OBSOLETE	LOOSE PC			2-87313-1
OBSOLETE	MINI APPL			2-87313-0
OBSOLETE	LOOSE PC			1-87313-9
OBSOLETE	MINI APPL			1-87313-8
OBSOLETE	LOOSE PC			1-87313-7
OBSOLETE	LOOSE PC			1-87313-6
OBSOLETE	LOOSE PC			1-87313-5
	LOOSE PC			1-87313-4
OBSOLETE	LOOSE PC			1-87313-3
OBSOLETE	MINI APPL			1-87313-2
OBSOLETE	MINI APPL			1-87313-1
OBSOLETE	MINI APPL			1-87313-0
	MINI APPL			87313-9
OBSOLETE	MINI APPL			87313-8
OBSOLETE	STD APPL			87313-7
OBSOLETE	STD APPL			87313-6
OBSOLETE	STD APPL			87313-5
OBSOLETE	STD APPL			87313-4
OBSOLETE	STD APPL			87313-3
OBSOLETE	STD APPL			87313-2
	IN PROCESS			87313-1
TYPE		FINISH		PART NUMBER

THIS DRAWING IS A CONTROLLED DOCUMENT.		DWN J.HERRINGTON	09DEC96	TE Connectivity	
		CHK J.HERRINGTON	09DEC96		
		APVD J.HERRINGTON	09DEC96		
		PRODUCT SPEC			
DIMENSIONS: mm [INCHES]		TOLERANCES UNLESS OTHERWISE SPECIFIED:		NAME CONTACT, MOD V, RECEPTACLE, CRIMP SNAP-IN	
		0 PLC ± -		APPLICATION SPEC	
		1 PLC ± -		108-25007	
		2 PLC ± -		114-25003	
		3 PLC ± -.13 [.005]		SIZE	
		4 PLC ± - # -		114-25003	
MATERIAL PHOS BRONZE .008 THK.		FINISH SEE TABLE		WEIGHT —	
				CUSTOMER DRAWING	
				SCALE NTS	
				SHEET 1 OF 1	
				REV L2	

# Mouser Electronics

Authorized Distributor

Click to View Pricing, Inventory, Delivery & Lifecycle Information:

[TE Connectivity:](#)

[87313-1](#)