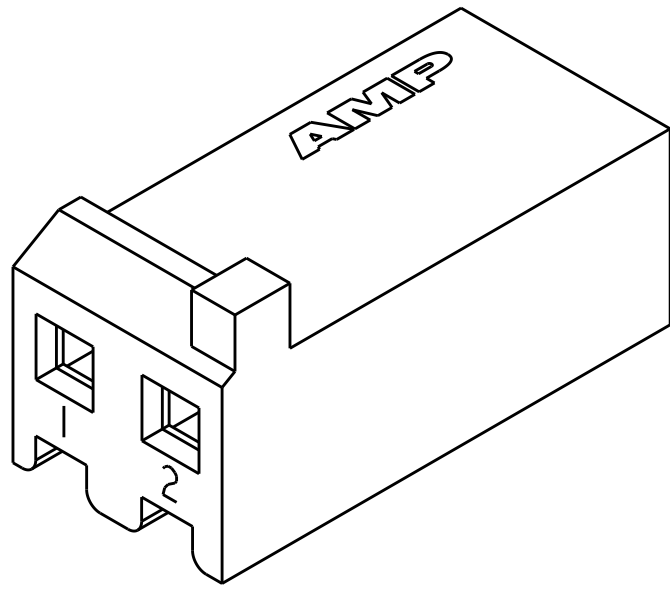
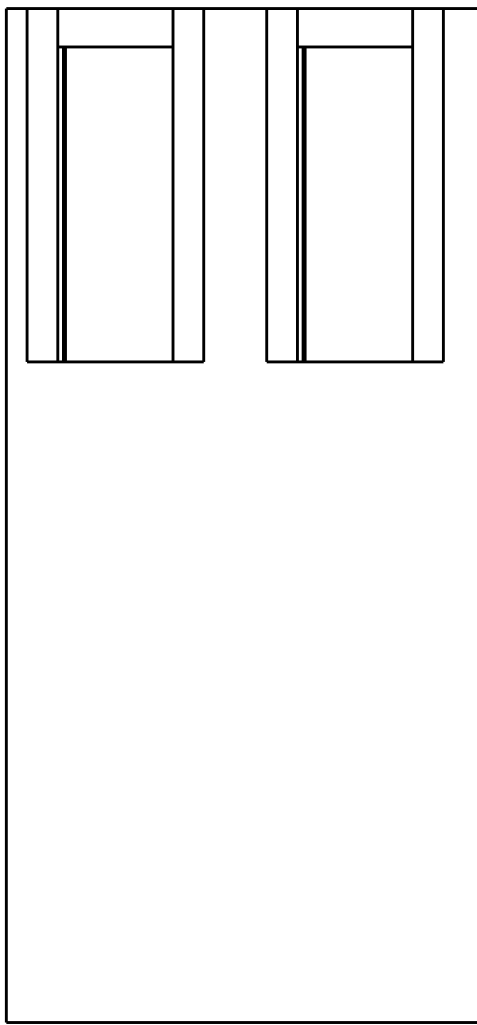
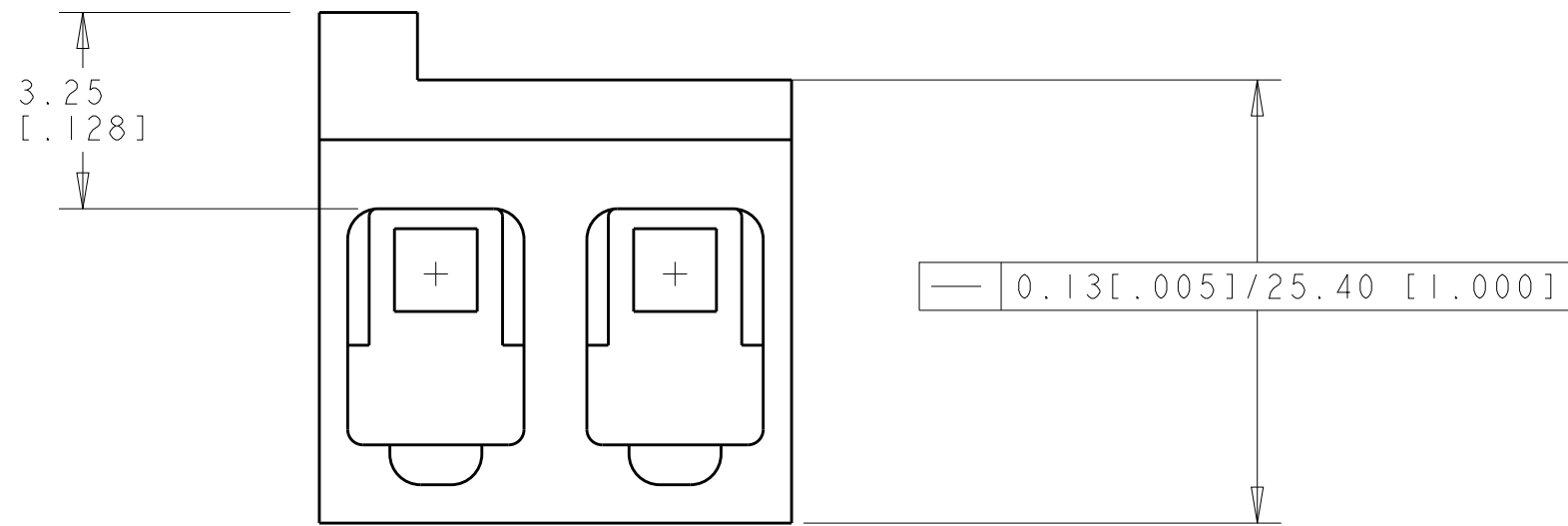
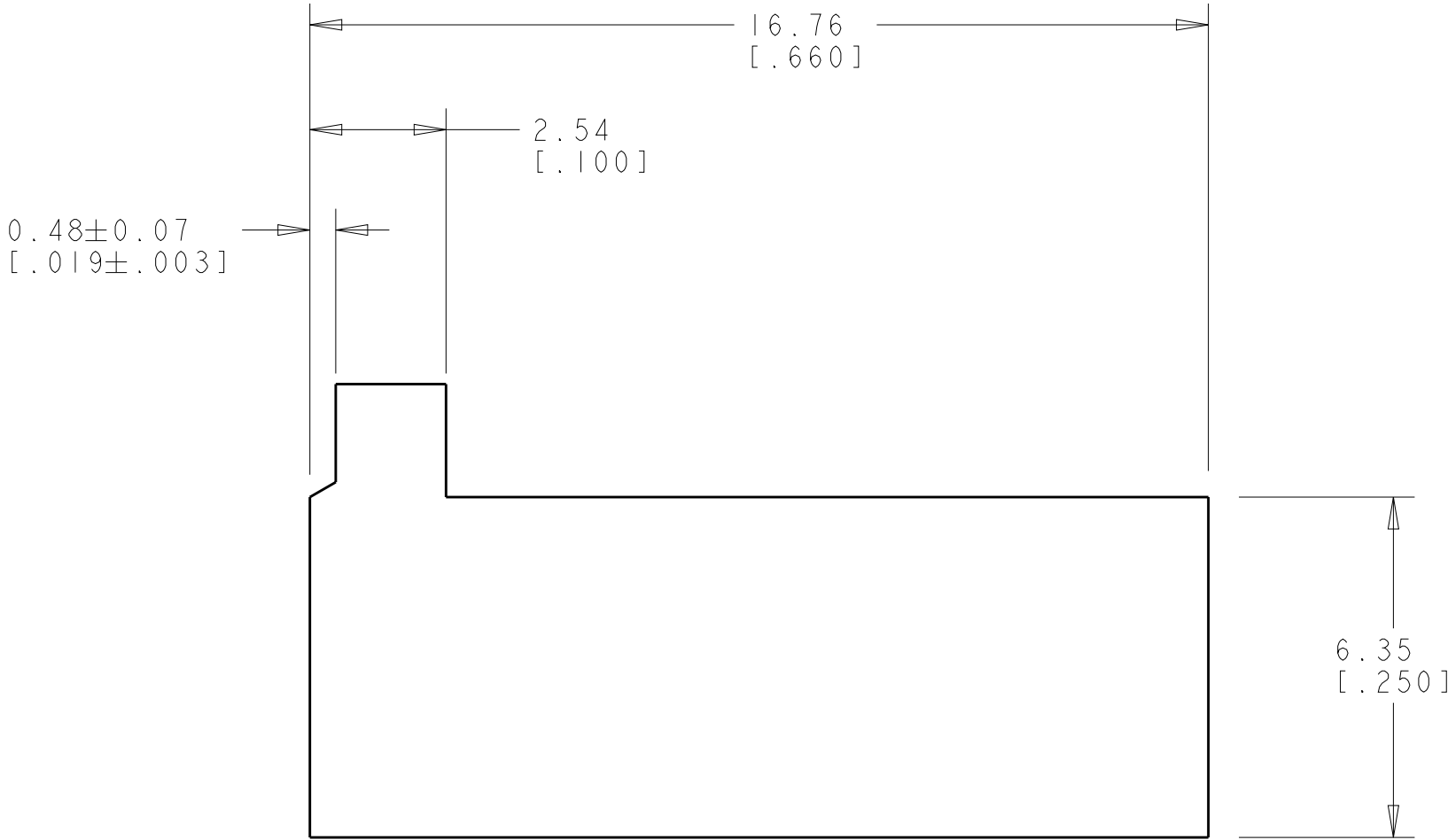
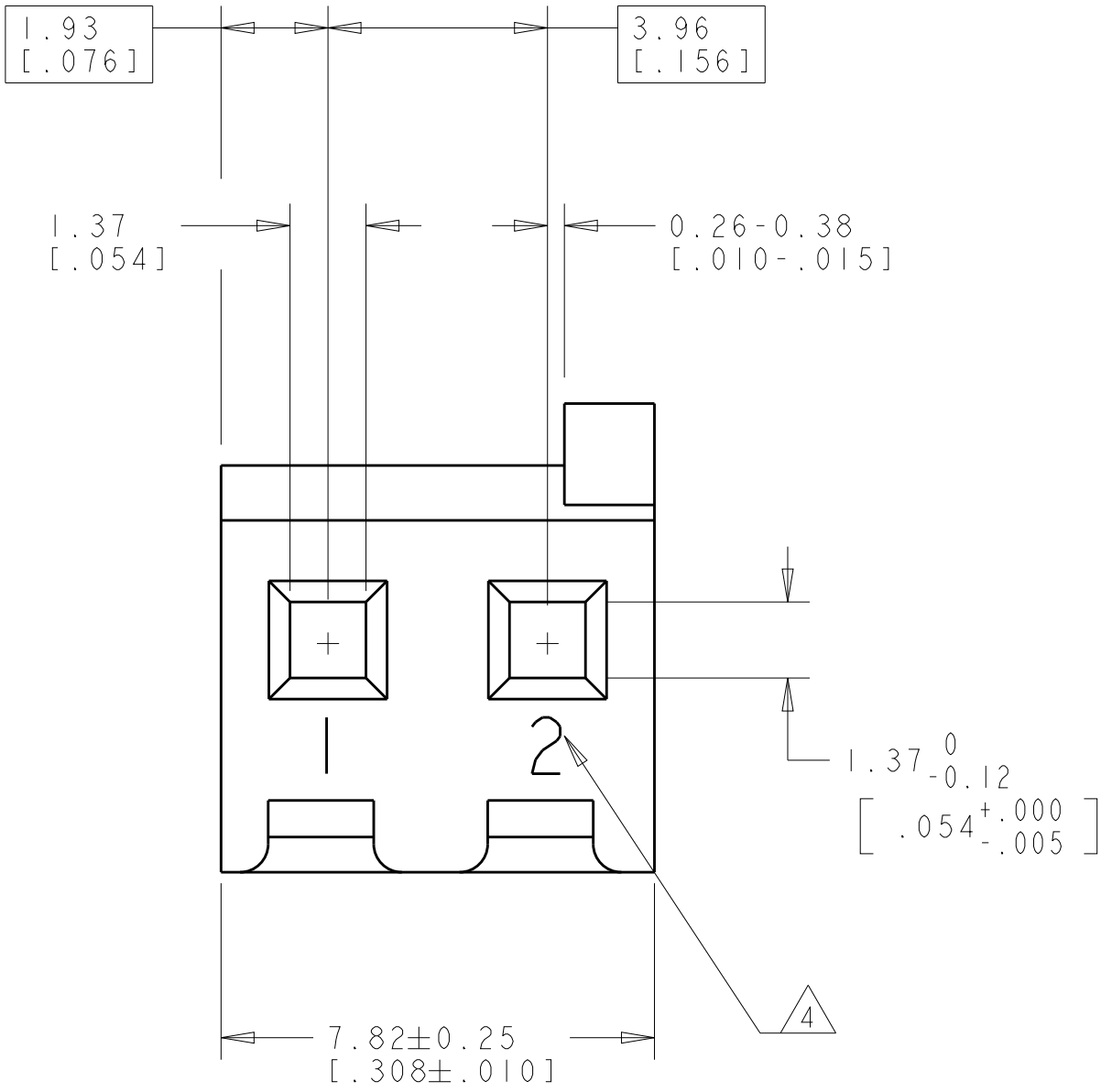


| LOC | DIST | REVISIONS | | | | | | |
|-----|------|-----------|-----|---------------------------|-----------|-----|------|--|
| | | P | LTR | DESCRIPTION | DATE | DWN | APVD | |
| CM | 00 | | A | REVISED PER ECO-12-007810 | 06AUG2012 | KH | SM | |
| | | | | | | | | |
| | | | | | | | | |
| | | | | | | | | |
| | | | | | | | | |

1. UNIT ACCEPTS 1.14 [.045] SQUARE OR ROUND POST.
2. UNIT ACCEPTS STANDARD SL-156 CONTACTS.
3. UNIT ACCEPTS KEYING PLUG 640254-1 AND KEYING PIN 640255-1.
- △4 CIRCUIT I.D. NUMBER(S) TO BE LOCATED SEQUENTIALLY
5. DIMENSION IN BRACKETS ARE IN INCHES.



3-DIMENSIONAL MODEL
SCALE 5:1

| | |
|-------------------|-------------|
| 2 | 647664-2 |
| NO OF CIRCUITS | PART NUMBER |

| | | | | |
|--|---|---------------------------------|---|-----------------|
| THIS DRAWING IS A CONTROLLED DOCUMENT. | | DWN R. WHITAKER 14-JAN-04 | TE Connectivity | |
| DIMENSIONS: mm[INCHES] | | CHK J. ELLIS 14-JAN-04 | | |
| | TOLERANCES UNLESS OTHERWISE SPECIFIED: | APVD J. ELLIS 14-JAN-04 | NAME | |
| | 0 PLC ± | PRODUCT SPEC | HOUSING, WITH LOCKING RAMP, AND POLARIZING TAB, SPECIAL, SL-156 | |
| | 1 PLC ± | APPLICATION SPEC | | |
| | 2 PLC ± | WEIGHT | | |
| MATERIAL NYLON, UL 94V-0 NATURAL | | CUSTOMER DRAWING | SIZE A100779 | RESTRICTED TO |
| FINISH - | | SCALE 8:1 | CAGE CODE C=647664 | SHEET 1 OF 1 |
| ANGLES #0° 30' | | REV A | | |

Mouser Electronics

Authorized Distributor

Click to View Pricing, Inventory, Delivery & Lifecycle Information:

[TE Connectivity:](#)

[647664-2](#)