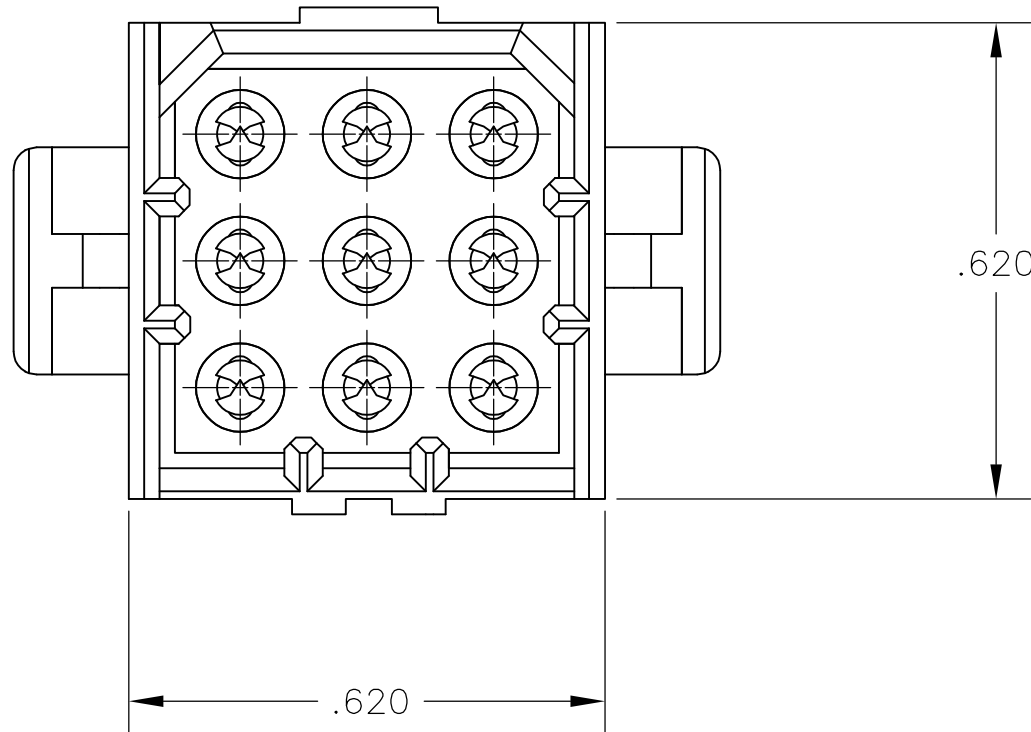
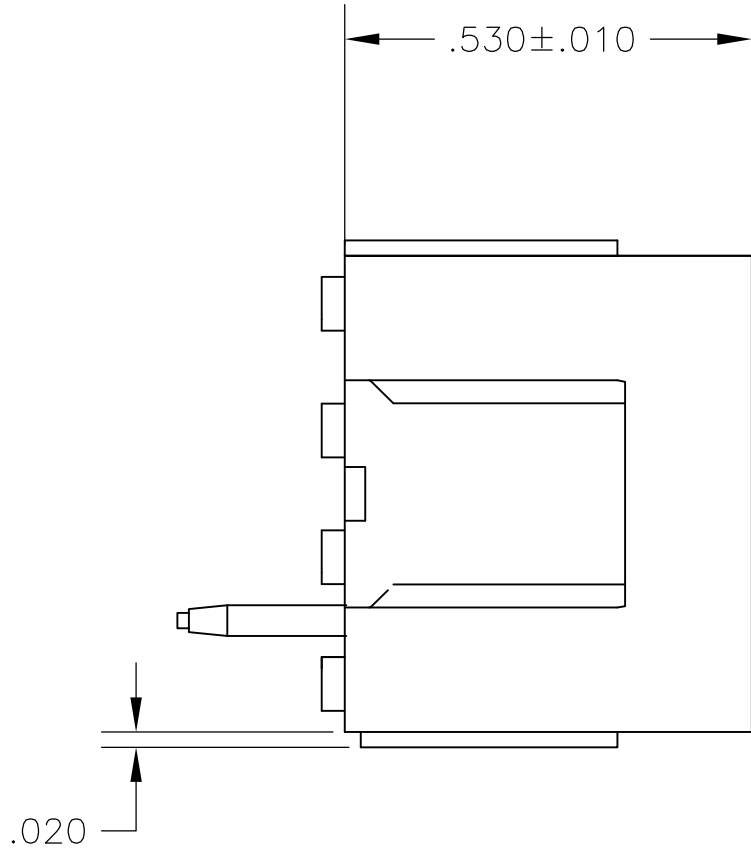
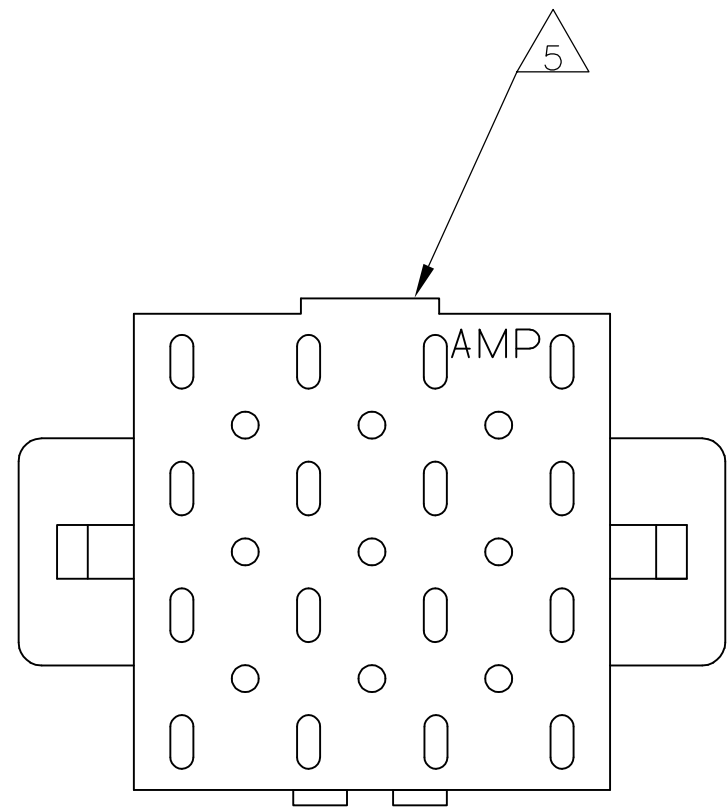
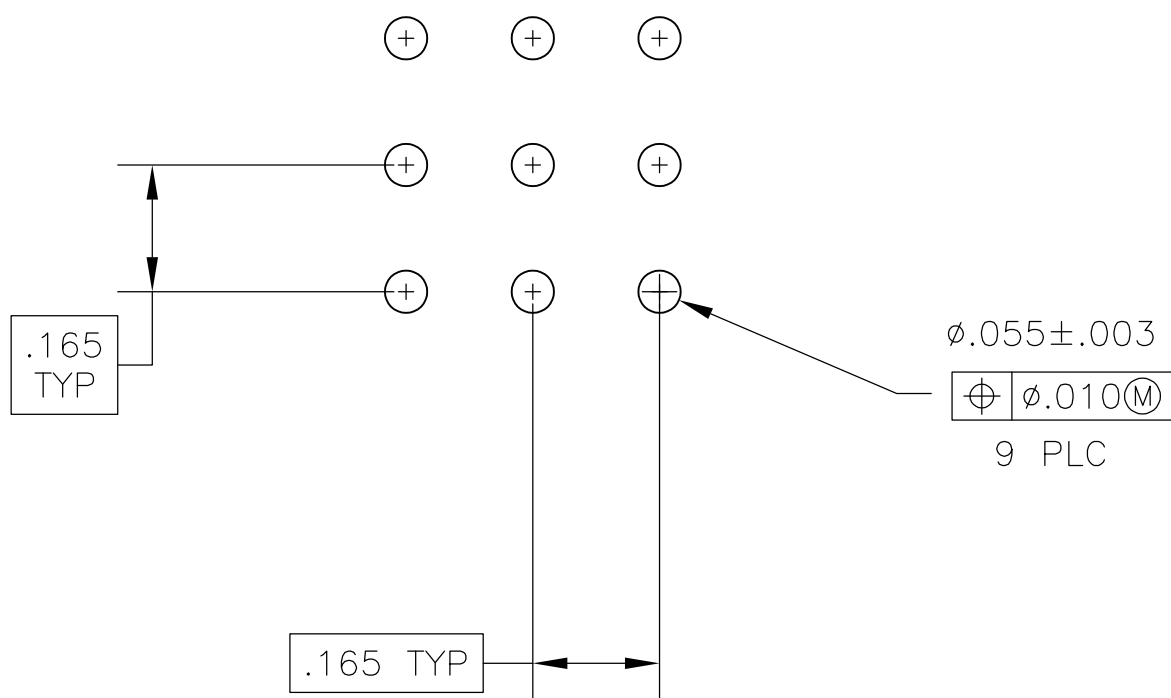


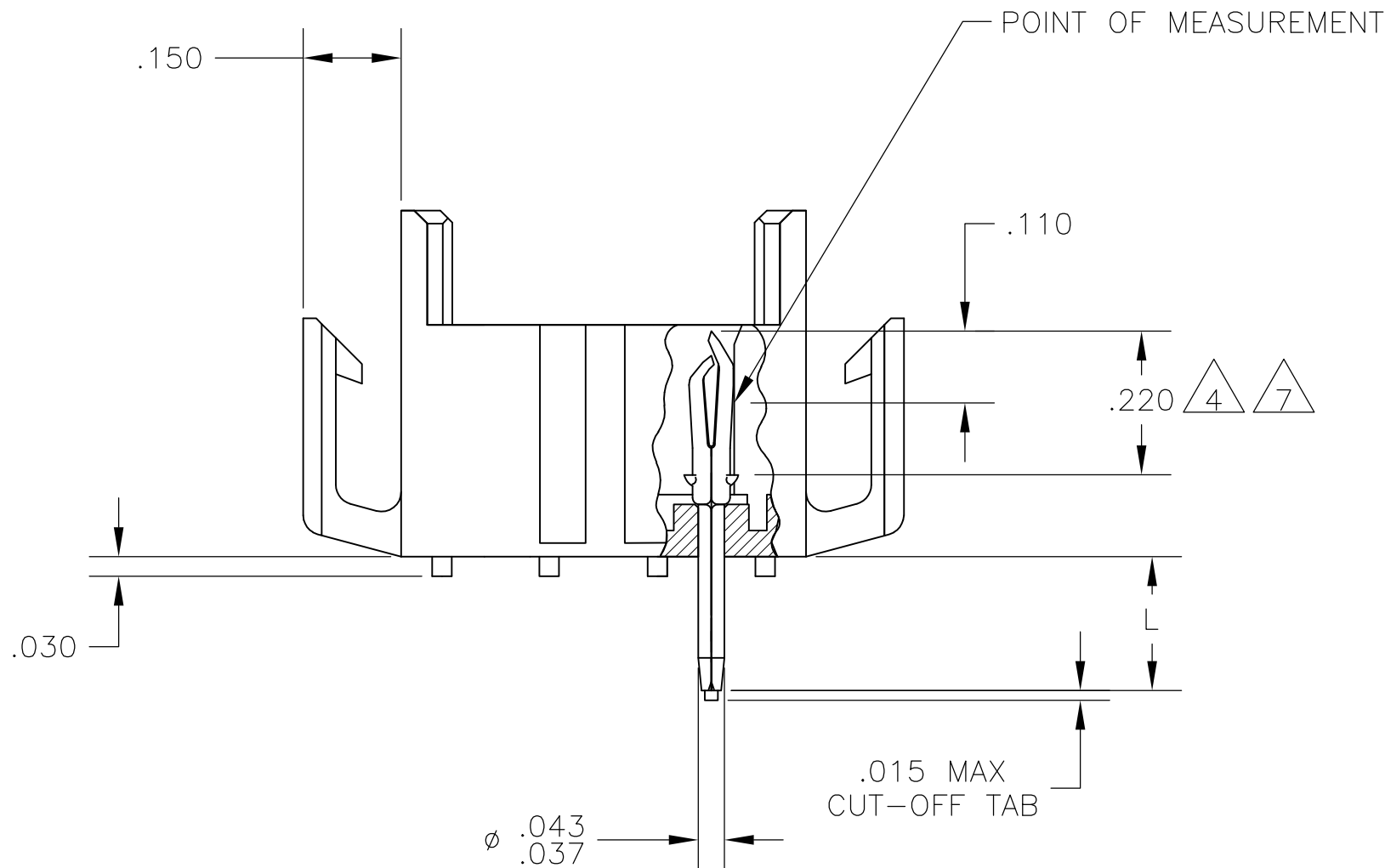
LOC	DIST	REVISIONS					
		REV	DATE	BY	CHKD	APPD	REASON
CM	0	R1	11MAR11	RK	HMR		REVISED PER ECO-11-004917



- FITS SOCKET HOUSING 640521.
- ASSEMBLY CONFORMS TO AMP SOLDERABILITY SPEC. 109-11-3.
- FOR USE WITH .063 THICK P.C. BOARD.
- CONTACT IS PLATED OVERALL WITH.000050 NICKEL, THEN .000030 GOLD OVER CONTACT LENGTH INDICATED AND .000150 MATTE TIN-LEAD ON SOLDER TAIL END.
- UL AND CSA LOGO LOCATED ON THIS SURFACE.
- FOR USE WITH .120 THICK P.C. BOARD.
- CONTACT IS PLATED OVERALL WITH.000050 NICKEL, THEN .000030 GOLD OVER CONTACT LENGTH INDICATED AND .000150 MATTE TIN ON SOLDER TAIL END.

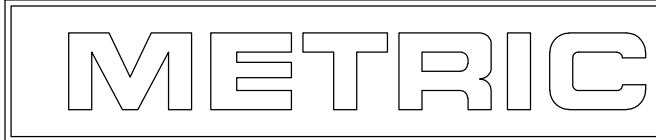


RECOMMENDED P.C. BOARD LAYOUT



.008	0.20	.037	0.94	.150	3.81	.620	15.75
.005	0.13	.030	0.76	.110	2.79	.530	13.46
.003	0.08	.020	0.51	.063	1.60	.220	5.59
.000050	0.00127	.015	0.38	.055	1.40	.210	5.33
.000030	0.00076	.010	0.25	.043	1.09	.165	4.19
IN	MM	IN	MM	IN	MM	IN	MM

CONVERSION TABLE



.210	6	BRICK RED	GOLD	7	2-640501-4
.150	3	BRICK RED	GOLD	7	2-640501-2
.210	6	BRICK RED	GOLD	4	640501-4
.210	6	BRICK RED	PRE-TIN		640501-3
.150	3	BRICK RED	GOLD	4	640501-2
.150	3	BRICK RED	PRE-TIN		640501-1
"L" +.010 -.020		HOUSING COLOR	PIN FINISH		PART NUMBER

THIS DRAWING IS A CONTROLLED DOCUMENT.		DWN J. HUFFMAN 28 APR 98	TE Connectivity		
DIMENSIONS: INCHES		CHK R. SWING 28 APR 98	NAME		
		APVD T. REDDICK 28 APR 98	PRODUCT SPEC		
			APPLICATION SPEC		
MATERIAL HOUSING FLAME RETARDANT NICKEL, UL 94V-0 PIN, .008 PH BRZ.		FINISH SEE FINISH	WEIGHT —	SIZE A1	CAGE CODE 00779
				DRAWING NO 640501	RESTRICTED TO —
				SCALE 4:1	SHEET 1 OF 1
				REV R1	

Mouser Electronics

Authorized Distributor

Click to View Pricing, Inventory, Delivery & Lifecycle Information:

[TE Connectivity:](#)

[640501-2](#)