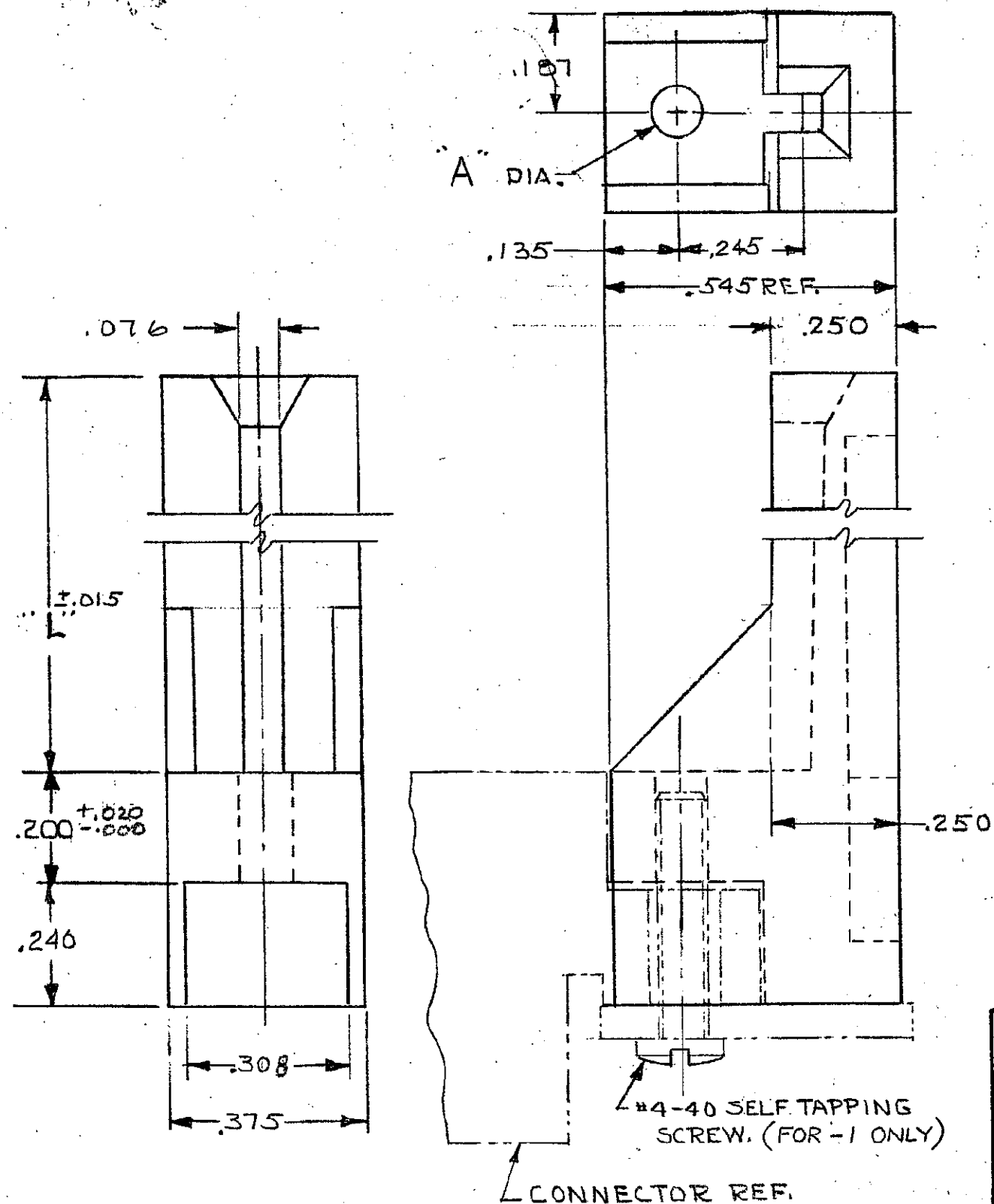


DRAWING MADE IN AMERICAN PROJECTION

© 1970 BY AMP INCORPORATED. ALL RIGHTS RESERVED. AMP
PRODUCTS COVERED BY PATENTS AND/OR PATENTS PENDING.

REVISIONS

ZONE	LTR	DESCRIPTION	DATE	APPROVED
	0	RELEASED, WAS 5112-255-1 CUST. SW	6-1-71	D.H.
	01	ADDED - 2 3155 MS	9-71	D.H.
	A	REVISED 3424 M.S.	3-72	D.H.
	B	REVISED PER ECN 4001 RW	1-10-74	M.Z.
	B1	ADDED -3, -4 4125 M.S.	5-24-74	M.Z.
	C	REVISED MATL. 4657 DR	1-9-76	DR. M.S.
	C1	ADDED -5 6567 AMS	3-17-80	
	C2	REV PER AD1089 JB	2-7-86	
	D	OBSOLETE -2 & -4 PER AD1831	3-22-88	25
✓	E	REV PER AD 3565	9/89	W
✓	F	REV PER EC 0320-349-97	24 NOV 97	NS

583760-5	.093	2.310	OBSOLETE
583760-4	.144	2.750	OBSOLETE
583760-3	.093	2.750	OBSOLETE
583760-2	.144	4.000	OBSOLETE
583760-1	.093	4.000	OBSOLETE
PART NO.	"A"	"L"	

UNLESS OTHERWISE
SPECIFIED DIMENSIONS
ARE IN INCHES
TOLERANCES ON:
DECIMALS $\pm .005$
ANGLES $\pm .2$ MATERIAL
GLASS FILLED
NYLON
COLOR: BLACK

CONTRACT NO.

DR. *Purdie* 11-19-70CHK. *S. Heide* 6-4-71APPD. *R. Kaufman* 6-4-71REV. *R. Shurman* 6-7-71

DSGN APPD.

OTHER APPD.

AMPAMP INCORPORATED
HARRISBURG, PENNSYLVANIA

NAME

CARD GUIDE, AMP LEAF

SIZE

B

CODE IDENT NO.

00779

NUMBER

583760

SCALE

4-L

SHEET

1 OF 1

CUSTOMER DRAWING

Mouser Electronics

Authorized Distributor

Click to View Pricing, Inventory, Delivery & Lifecycle Information:

[TE Connectivity:](#)

[583760-1](#)