

4

3

2

1

THIS DRAWING IS UNPUBLISHED.

RELEASED FOR PUBLICATION

--

© COPYRIGHT - By -

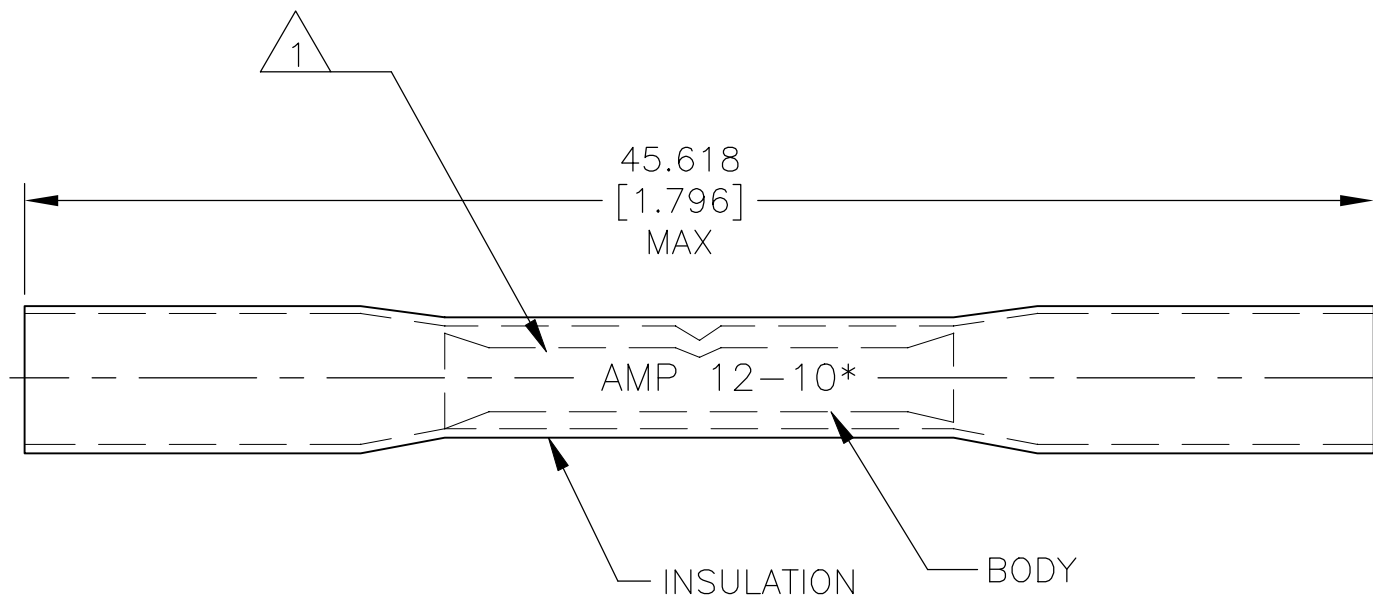
ALL RIGHTS RESERVED.

REVISIONS

P	LTR	DESCRIPTION	DATE	DWN	APVD
E1		REVISED PER ECO-15-002700	20FEB2015	NK	DR
E2		REVISED PER ECO-17-016703	06APR2018	RS	DR

**AMP**  
WIRE RANGE

12-10 AWG  
STRANDED



- 1 STAMP AMP 12-10\* APPROX AS SHOWN.
- 2 WIRE INSULATION IS  $\phi 6.096[\phi.240]$  MAX
- 3 NOTE DLETED
- 4 NOTE DLETED

25	LOOSE PIECE	8-55826-3
500	LOOSE PIECE	55826-1
QTY	PACKAGE TYPE	PART NO

AMP INCORPORATED  
CUSTOMER SERVICE SYSTEMS

MAX RECOMMENDED OPERATING TEMPERATURE:  
125° C[257° F] MAX

THIS DRAWING IS A CONTROLLED DOCUMENT.

DWN S S GOULDEN 6/93

**STE** TE Connectivity Ltd.

FOR ADDITIONAL PRODUCT INFORMATION OR COPIES OF DRAWINGS AND TECHNICAL DOCUMENTS

PRODUCT INFORMATION CENTER  
1-800-522-6752

VOLTAGE RATING:  
600V MAX (BUILDING WIRING)  
1000V MAX (FIXTURES & SIGNS)

DIMENSIONS:  
mm [INCHES]

TOLERANCES UNLESS OTHERWISE SPECIFIED:

CHK R HERSEY 6/93

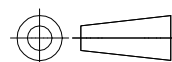
APVD B BARE 6/93

NAME  
SPLICE, SEALABLE  
HEAT SHRINKABLE  
12-10 AWG

FOR APPLICATION TOOLING INFORMATION

TOOLING ASSISTANCE CENTER  
1-800-722-1111

CIRCULAR MIL AREA:  
2.62-6.64mm<sup>2</sup> [5180-13100]  
STRANDED



0 PLC ± -  
1 PLC ± -  
2 PLC ± -  
3 PLC ± 0.127[.005]  
4 PLC ± -  
ANGLES ± -

PRODUCT SPEC

APPLICATION SPEC

SIZE CAGE CODE DRAWING NO RESTRICTED TO

FOR ORDER ENTRY

1-800-526-5142

THIS DRAWING IS A CONTROLLED DOCUMENT FOR AMP INCORPORATED. IT IS SUBJECT TO CHANGE AND THE CONTROLLING ENGINEERING ORGANIZATION SHOULD BE CONTACTED FOR THE LATEST REVISION.

MATERIAL  
BODY: ETP COPPER  
INSULATION: POLYOLEFIN

FINISH  
BODY: EDP TIN PLATED  
INSULATION:  
COLOR-YELLOW

WEIGHT

408-4022

A3 00779 C-55826

CUSTOMER DRAWING

SCALE NTS SHEET 1 OF 1 REV E2

# Mouser Electronics

Authorized Distributor

Click to View Pricing, Inventory, Delivery & Lifecycle Information:

[TE Connectivity:](#)

[8-55826-3](#)