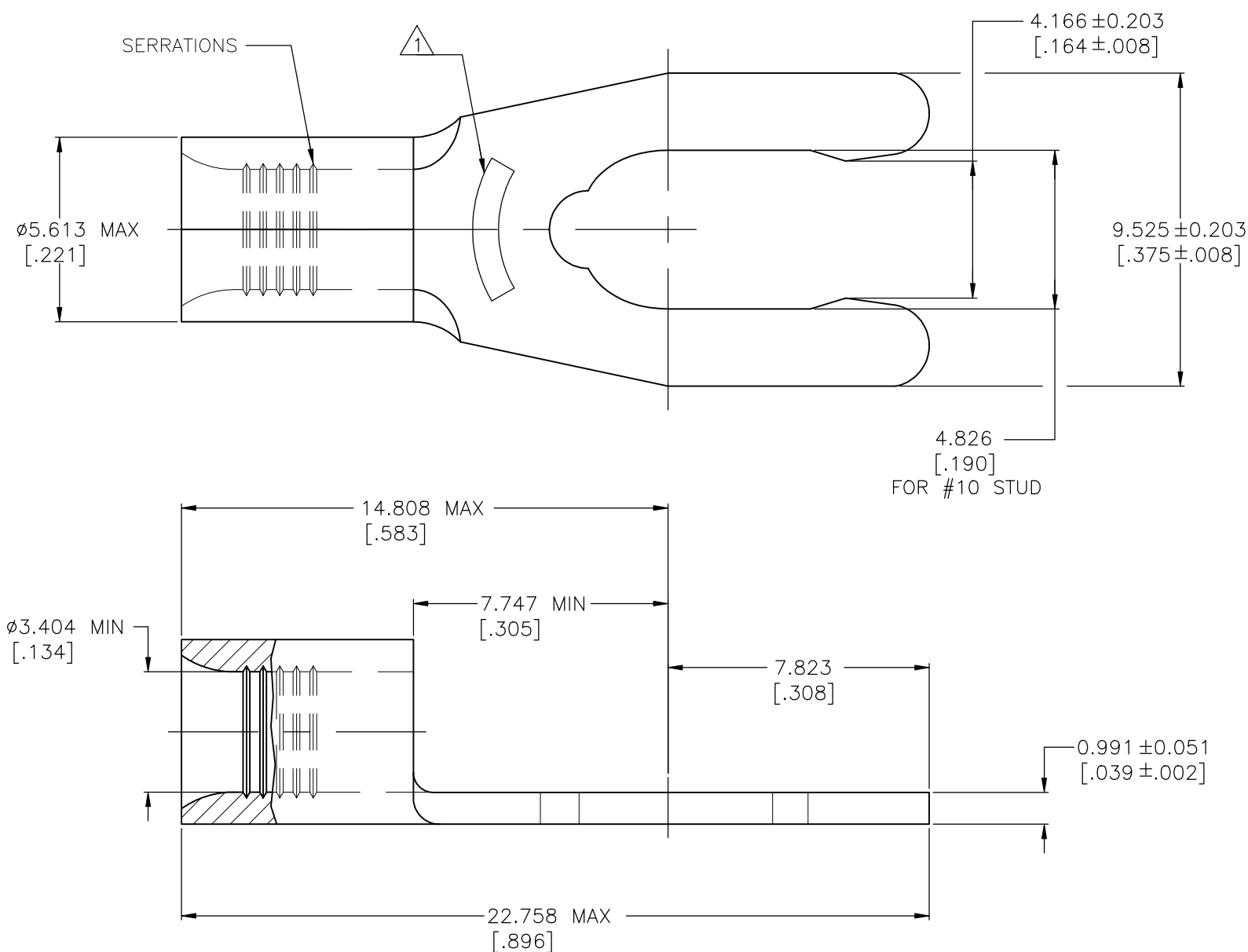



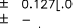


|  |  |  |
|--|--|--|
| <br><b>WIRE RANGE</b> |  Listed<br><b>FILE E13288</b> |  LR7189<br><b>Certified</b> |
| 12-10 AWG<br>STRANDED  | 12-10 AWG<br>STRANDED  | NOT CERTIFIED  |



- |   |   |
|---|---|
| 1 | STAMP 10S AMP 12-10* APPROX AS SHOWN<br>10S INDICATES STUD SIZE |
| 2 | PHOSPHOR BRONZE PER ASTM B-103, ANNEALED                        |
| 3 | TIN PLATE 0.00254 [.000100] MIN PER ASTM B545                   |

|   |   |   |  |           |  |            |
|---|---|---|--|-----------|--|------------|
| MAX. RECOMMENDED OPERATING TEMPERATURE:<br><br>170°C[338°F] MAX | THIS DRAWING IS A CONTROLLED DOCUMENT.  |   | <div>DWN<br/>TA BRINKMAN<br/>CHK<br/>DA PATTERSON<br/>APVD<br/>JL MECKLEY</div> <div>2-16-93<br/>2-16-93<br/>2-16-93</div> |           | <div> TE Connectivity</div> |            |
|   | VOLTAGE RATING:<br><br>N/A  | DIMENSIONS:<br>mm [INCHES]  | TOLERANCES UNLESS OTHERWISE SPECIFIED:   | NAME      |  |            |
| CIRCULAR MIL AREA:<br><br>2.62-6.64mm² [5,180-13,100] STRANDED  |  | 0 PLC ± -<br>1 PLC ± -<br>2 PLC ± -<br>3 PLC ± 0.127[.005]<br>4 PLC ± -               | TERMINAL, LONG<br>SPRING SPADE, BUDGET<br>12-10 AWG  |           |  |            |
|   | MATERIAL  | FINISH  | SIZE   | CAGE CODE | DRAWING NO   | RESTRICTED |
|   |  |  | A2   | 00779     | C-52708  | -          |
|   |   |   | WEIGHT   |           | CUSTOMER DRAWING   |            |
|   |   |   | -  |           | SCALE  | SHEET      |
|   |   |   |  |           | 8:1  | 1 of 1     |
|   |   |   |  |           | REV  | A          |

# Mouser Electronics

Authorized Distributor

Click to View Pricing, Inventory, Delivery & Lifecycle Information:

[TE Connectivity:](#)

[52708-1](#)