

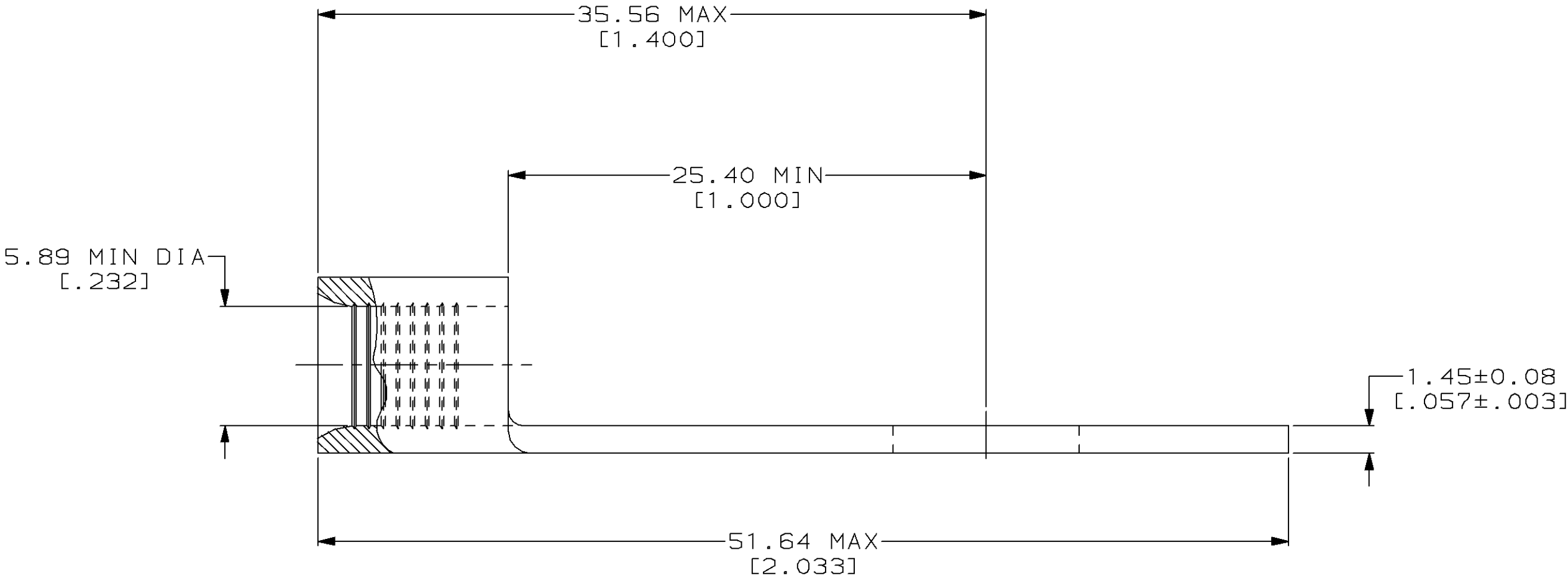
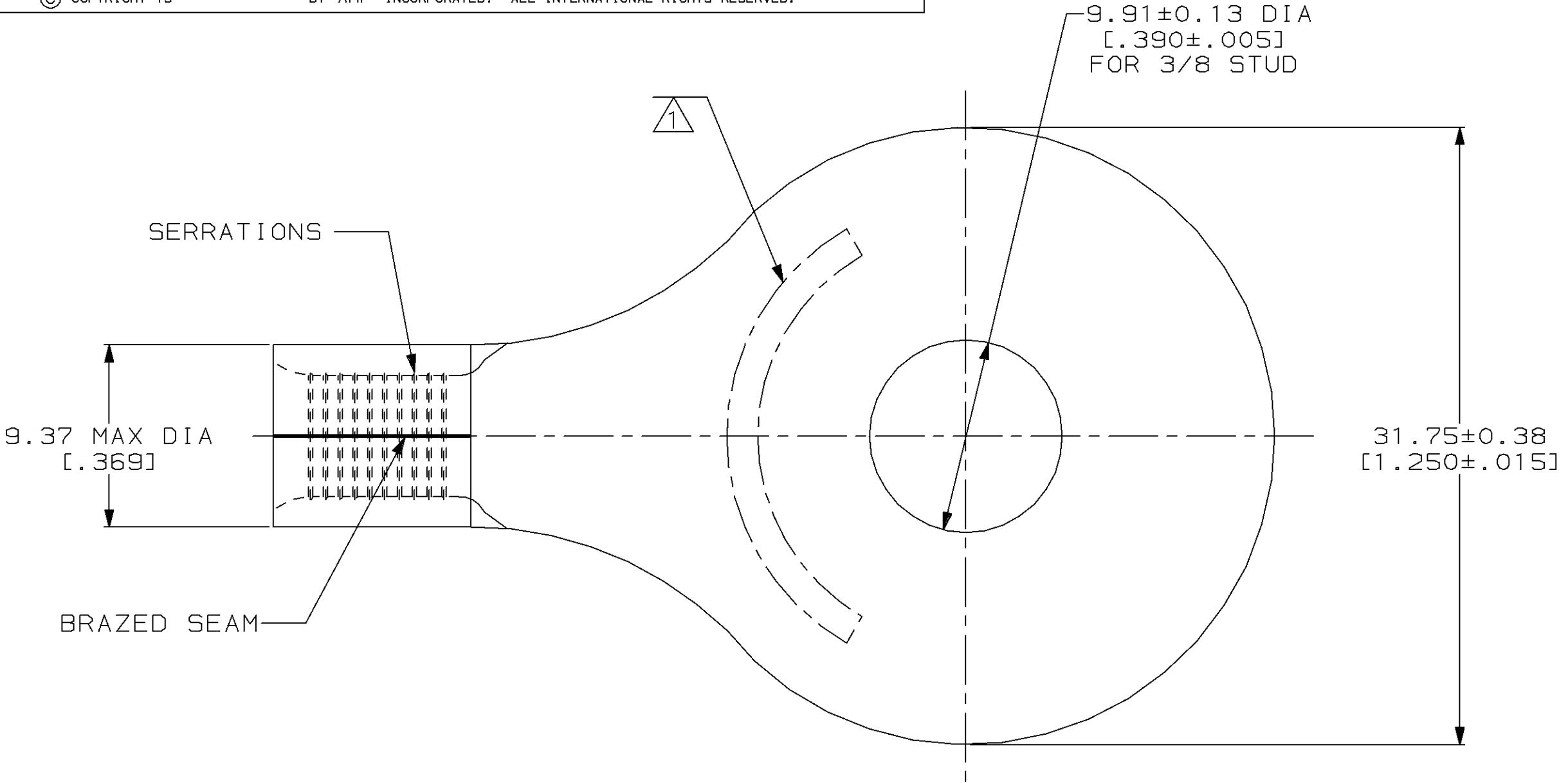
LOC		DIST						REVISIONS		
G		14		P	F	ZONE	LTR	DESCRIPTION	DATE	APPD
							C	REV & REDRAWN PER 0720-0040-93	3-24-93	AMP DAP

METRIC

DIMENSIONS LISTED IN mm [INCHES]

AMP WIRE RANGE	Listed
6 AWG SOLID OR STRANDED	6 AWG STRANDED
LR7189 Certified	MILITARY P/N AND CLASS
6 AWG SOLID OR STRANDED	NOT APPLICABLE

1

 STAMP AMP 6* APPROX AS SHOWN

AMP INCORPORATED CUSTOMER SERVICE SYSTEMS			MAX RECOMMENDED OPERATING TEMPERATURE: 170°C MAX		DO NOT SCALE PRINT. UNLESS SPECIFIED DIMENSIONS IN mm [INCHES] TOLERANCES ON: 2 PLC DEC ± - 3 PLC DEC ± - ANGLES ± -		DR 3-24-93 TA BRINKMAN		36807		
FOR ADDITIONAL PRODUCT INFORMATION OR COPIES OF DRAWINGS AND TECHNICAL DOCUMENTS			VOLTAGE RATING: NOT APPLICABLE		MATERIAL COPPER PER ASTM B-152 ANNEALED		CHK 3-24-93 DA PATTERSON		PART NO		
FOR APPLICATION TOOLING INFORMATION			WIRE CROSS SECTIONAL AREA RANGE: 10.5-16.8MM² [20,800-33,100] CIR MILS SOLID OR STRANDED		FINISH TIN PLATE 0.00254[0.00100] MIN THK PER MIL-T-10727		APPD 3-24-93 DE MILLER		NAME		
FOR ORDER ENTRY			THIS DRAWING IS A CONTROLLED DOCUMENT FOR AMP INCORPORATED. IT IS SUBJECT TO CHANGE AND THE CONTROLLING ENGINEERING ORGANIZATION SHOULD BE CONTACTED FOR THE LATEST REVISION.				APPD 3-24-93 JL MECKLEY		TERMINAL, RING TONGUE, SOLISTRAND™		
							PRODUCT SPEC -		SIZE	CAGE CODE	DRAWING NO
							APPLICATION SPEC -			00779	C=36807
							WEIGHT -		SCALE	4:1	SHEET 1 OF 1

Mouser Electronics

Authorized Distributor

Click to View Pricing, Inventory, Delivery & Lifecycle Information:

[TE Connectivity:](#)

[36807](#)