

4		3		2		1			
THIS DRAWING IS UNPUBLISHED.		RELEASED FOR PUBLICATION		REVISIONS					
© COPYRIGHT — By —		ALL RIGHTS RESERVED.		P	LTR	DESCRIPTION	DATE	DWN	APVD
					V1	REVISED PER ECO-17-007400	15DEC2017	RS	DR
					V2	REVISED PER ECO-19-007720	21MAY2020	KR	DR

INSULATION

SLEEVE

BODY

1

5.537  
[.218]

0.787  
[.031]  
MIN

3.962  
[.156]  
MIN

14.224  
[.560]  
MAX

17.069  
[.672]  
MAX

ø3.683±0.076  
[ø.145±.003]  
(FOR M3.5[#6] STUD)

1

2

3

4

5

6

STAMP AMP 22-18\* APPROX AS SHOWN  
22-16 TERMINALS ARE STAMPED 22-18 IN  
ACCORDANCE WITH MILITARY SPEC SAE AS7928  
COMMERCIAL WIRE RANGE IS 22-16.

WIRE INSULATION : ø2.032-3.175[ø.080-.125]

BODY MATERIAL THK: 0.787±0.051[.031±.002]

APPLIES FROM EDGE OF METAL WIRE BARREL  
TO CENTER OF STUD HOLE.

UL LISTED

CSA CERTIFIED

5	6	-	100	LOOSE PIECE, BOX	8-36149-1
5	6	MS25036-101 CLASS 2	5000	ON TAPE, REEL	2-36149-2
5	6	MS25036-101 CLASS 1 & 2	1000	LOOSE PIECE	36149
		MILITARY P/N AND CLASS	QUANTITY	PACKAGE TYPE	PART NO

AMP INCORPORATED  
CUSTOMER SERVICE SYSTEMS

FOR ADDITIONAL  
PRODUCT INFORMATION OR  
COPIES OF DRAWINGS  
AND TECHNICAL DOCUMENTS

FOR APPLICATION  
TOOLING INFORMATION

FOR ORDER ENTRY

PRODUCT INFORMATION CENTER  
1-800-522-6752

TOOLING ASSISTANCE CENTER  
1-800-722-1111

1-800-526-5142

MAX RECOMMENDED OPERATING  
TEMPERATURE:  
105°C[221°F] MAX

VOLTAGE RATING:  
300 V MAX

CIRCULAR MIL AREA:  
0.26-1.65mm²[509-3,260] CIR MILS  
SOLID OR STRANDED

THIS DRAWING IS A CONTROLLED DOCUMENT.

DIMENSIONS:  
mm[INCHES]

MATERIAL  
BODY & SLEEVE:  
COPPER PER ASTM B-152  
INSUTATION: NYLON

FINISH  
BODY & SLEEVE:  
TIN PLATE PER ASTM B545  
INSULATION: COLOR-RED

DWN  
DK SCHRUM  
9/8/93

CHK  
RE HERSEY  
9/8/93

APVD  
ML ELLIS  
9/8/93

PRODUCT SPEC  
UL 486 A-B

APPLICATION SPEC  
114-2157

WEIGHT  
-

TE Connectivity

NAME  
TERMINAL, RING TONGUE,  
PIDG™, WIRE SIZE, 22-16 AWG

SIZE  
A3

CAGE CODE  
00779

DRAWING NO  
C-36149

RESTRICTED TO  
-

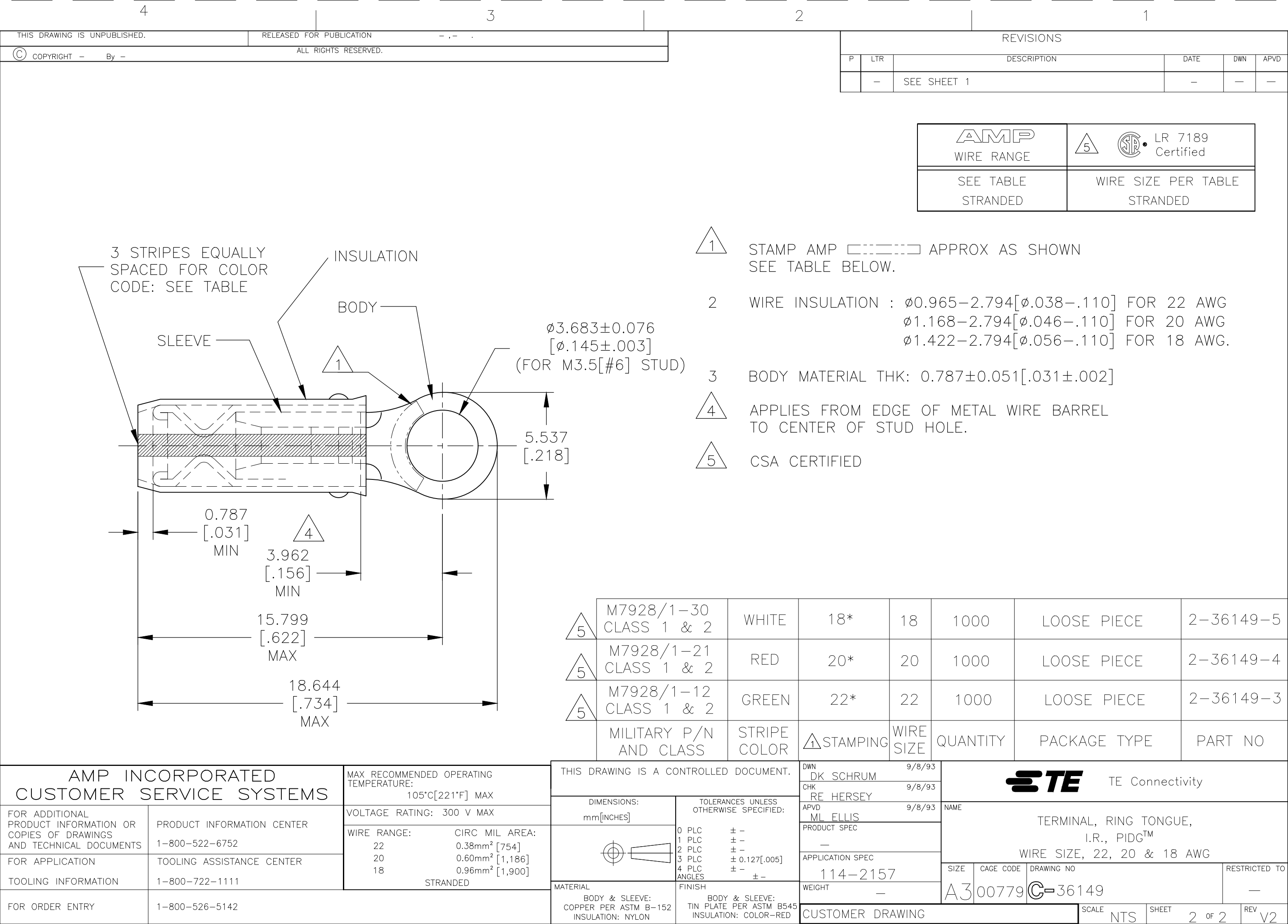
CUSTOMER DRAWING

SCALE  
NTS

SHEET  
1 OF 2

REV  
V2

1470-19 (1/15)



# Mouser Electronics

Authorized Distributor

Click to View Pricing, Inventory, Delivery & Lifecycle Information:

[TE Connectivity:](#)

[2-36149-3](#)