

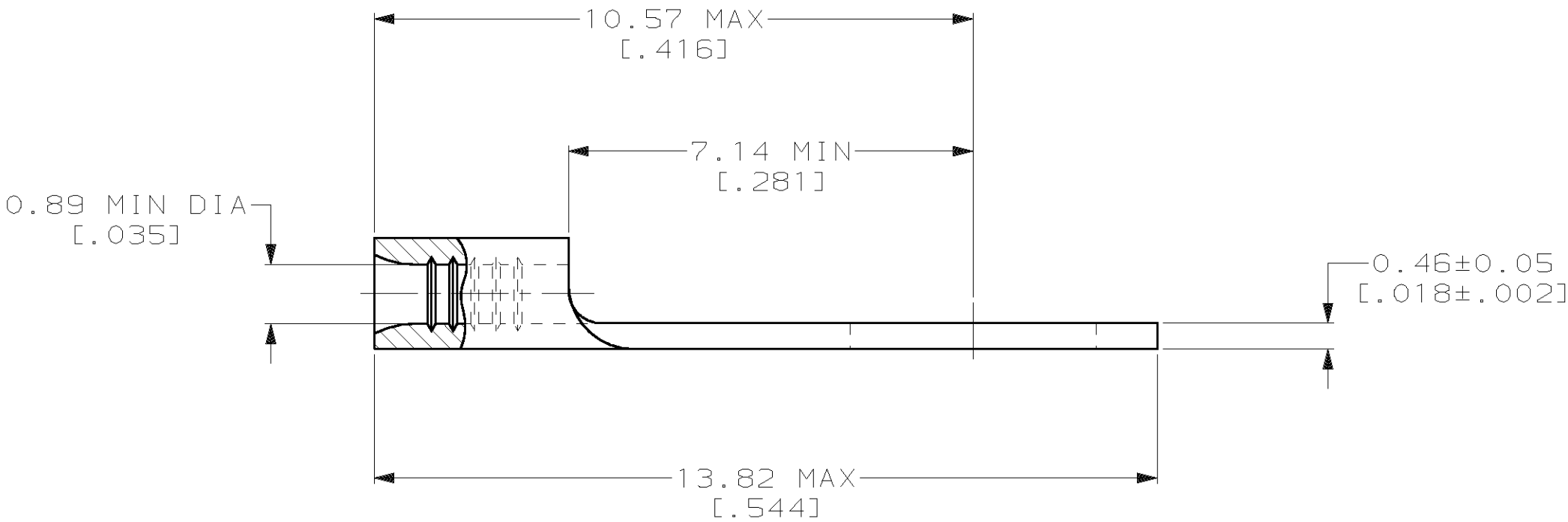
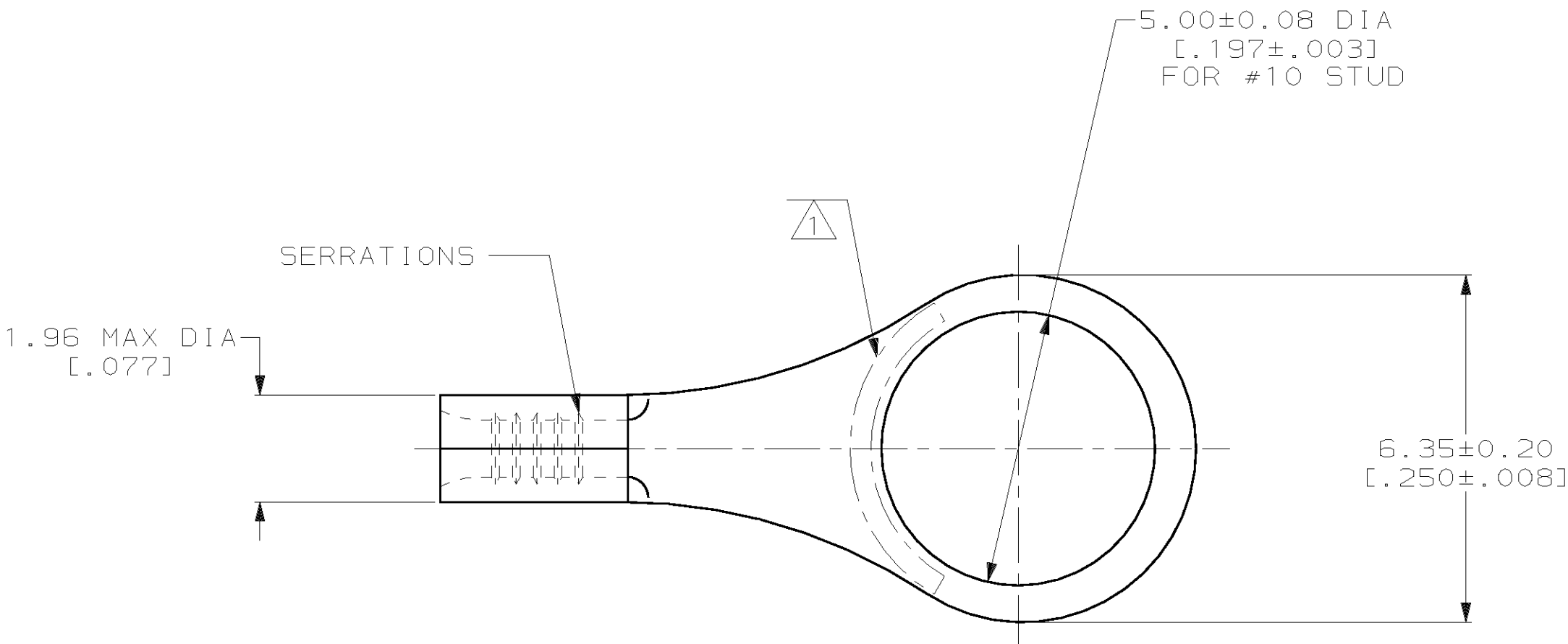
LOC	DIST	P	F	ZONE	LTR	DESCRIPTION	DATE	APPD
G	14					C	REV PER 063A-0124-02	06MAR02 JF MS

METRIC

DIMENSIONS LISTED IN mm [ INCHES ]

<b>AMP</b> WIRE RANGE	<b>UL</b> E13288 Listed
26-22 AWG STRANDED	NOT LISTED
<b>CS</b> LR7189 Certified	MILITARY P/N AND CLASS
NOT CERTIFIED	NOT APPLICABLE

- 1 STAMP AMP APPROX AS SHOWN
- 2 0.00254 [ .000100 ] MIN TIN PER ASTM B-545
- 3 CLEANED, UNPLATED



AMP INCORPORATED CUSTOMER SERVICE SYSTEMS			MAX RECOMMENDED OPERATING TEMPERATURE: 170°C MAX		DO NOT SCALE PRINT. UNLESS SPECIFIED DIMENSIONS IN mm [ INCHES ] TOLERANCES ON : 2 PLC DEC ± - 3 PLC DEC ± - ANGLES ± -		DR 2-2-93 TA BRINKMAN CHK 2-2-93 DA PATTERSON APPD 2-2-93 DE MILLER APPD 2-2-93 JL MECKLEY PRODUCT SPEC -		AMP Incorporated Harrisburg, PA 17105-3608	
FOR ADDITIONAL PRODUCT INFORMATION OR COPIES OF DRAWINGS AND TECHNICAL DOCUMENTS	PRODUCT INFORMATION CENTER 1-800-522-6752	VOLTAGE RATING:  NOT APPLICABLE	WIRE CROSS SECTIONAL AREA RANGE: 0.1-0.41mm² [202-810] CIR MILS STRANDED		COPPER PER ASTM B-152 ANNEALED		APPLICATION SPEC -		NAME  TERMINAL, RING TONGUE, BUDGET	
FOR APPLICATION TOOLING INFORMATION	TOOLING ASSISTANCE CENTER 1-800-722-1111	THIS DRAWING IS A CONTROLLED DOCUMENT FOR AMP INCORPORATED. IT IS SUBJECT TO CHANGE AND THE CONTROLLING ENGINEERING ORGANIZATION SHOULD BE CONTACTED FOR THE LATEST REVISION.		FINISH -		WEIGHT -		SIZE C	CAGE CODE 00779	DRAWING NO C-32860
FOR ORDER ENTRY	1-800-526-5142							SCALE 10:1	SHEET 1 OF 1	

# Mouser Electronics

Authorized Distributor

Click to View Pricing, Inventory, Delivery & Lifecycle Information:

[TE Connectivity:](#)

[32860](#)