



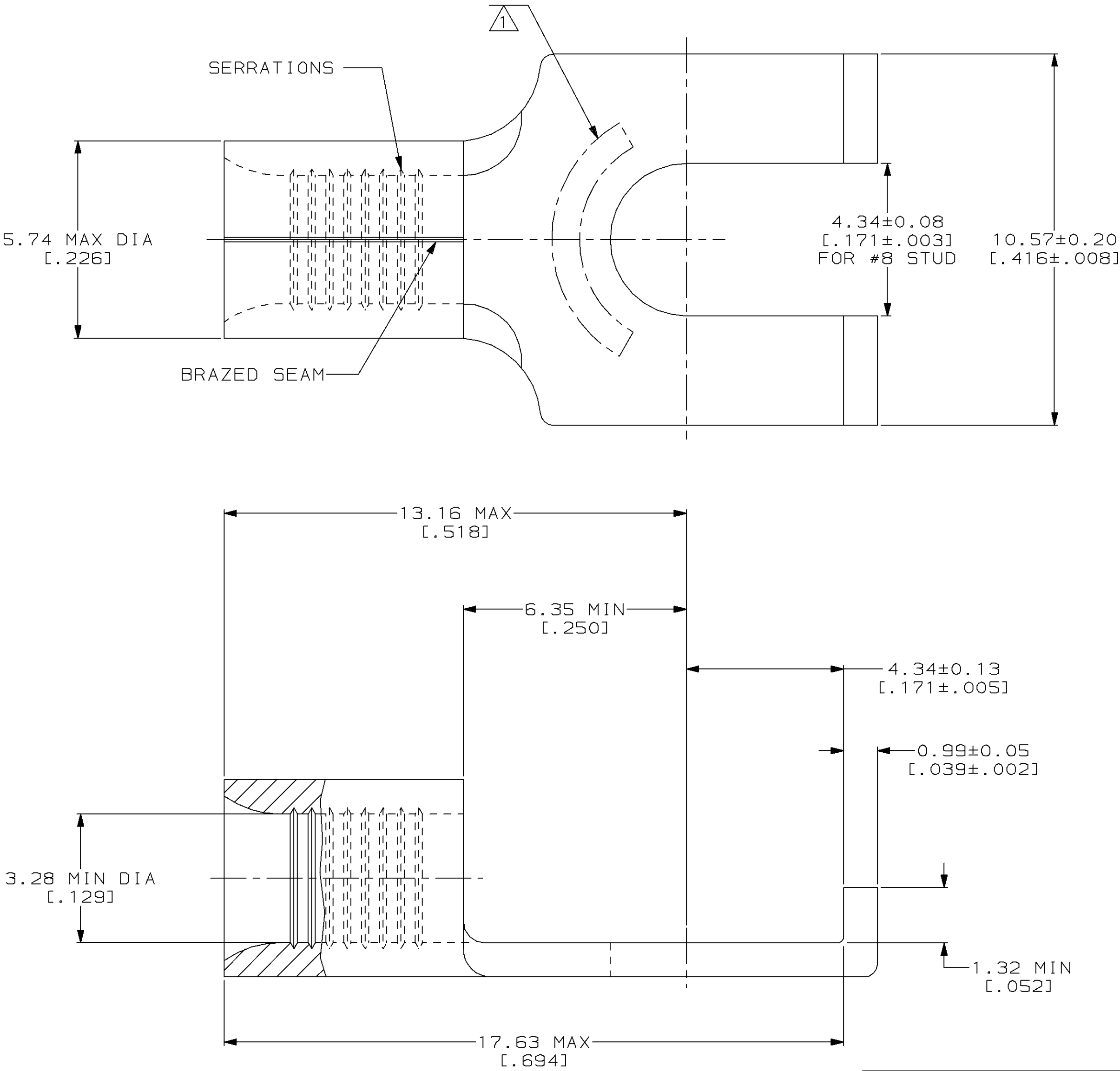
| LOC | | DIST | | REVISIONS | | | | | | |
|-----|----|------|---|-----------|-----|--------------------------------|--------|---------|------|--|
| G | 14 | P | F | ZONE | LTR | DESCRIPTION | | DATE | APPD | |
| | | | | | E | REV & REDRAWN PER 0720-0040-93 | 4-8-93 | 1AP DAP | | |

METRIC

DIMENSIONS LISTED IN mm [INCHES]

| | |
|---|--|
| AMP WIRE RANGE |  E13288 Listed |
| 12-10 AWG SOLID OR STRANDED | 12-10 AWG STRANDED |
|  LR7189 Certified | MILITARY P/N AND CLASS |
| 12-10 AWG SOLID OR STRANDED | NOT APPLICABLE |

1 STAMP AMP 12-10* APPROX AS SHOWN



AMP INCORPORATED
CUSTOMER SERVICE SYSTEMS

FOR ADDITIONAL
PRODUCT INFORMATION OR
COPIES OF DRAWINGS
AND TECHNICAL DOCUMENTS

FOR APPLICATION
TOOLING INFORMATION

FOR ORDER ENTRY

PRODUCT INFORMATION CENTER
1-800-522-6752

TOOLING ASSISTANCE CENTER
1-800-722-1111

1-800-526-5142

MAX RECOMMENDED OPERATING
TEMPERATURE:
170°C MAX

VOLTAGE RATING:
NOT APPLICABLE

WIRE CROSS SECTIONAL AREA RANGE:
2.62-6.64mm² [5,180-13,100] CIR MILS
SOLID OR STRANDED

THIS DRAWING IS A CONTROLLED DOCUMENT FOR
AMP INCORPORATED. IT IS SUBJECT TO CHANGE
AND THE CONTROLLING ENGINEERING ORGANIZATION
SHOULD BE CONTACTED FOR THE LATEST REVISION.

DO NOT SCALE PRINT.
UNLESS SPECIFIED
DIMENSIONS IN mm [INCHES]
TOLERANCES ON :
2 PLC DEC ± -
3 PLC DEC ± -
ANGLES ± -
MATERIAL
COPPER PER
ASTM B-152
ANNEALED
FINISH
TIN PLATE
0.00254[.000100] MIN
THK PER MIL-T-10727

DR 4-8-93
TA BRINKMAN
CHK 4-8-93
DA PATTERSON
APPD 4-8-93
DE MILLER
APPD 4-8-93
JL MECKLEY
PRODUCT SPEC
-
APPLICATION SPEC
-
WEIGHT -

AMP AMP Incorporated
Harrisburg, PA 17105-3608

NAME
TERMINAL, FLANGED
SPADE, SOLISTRAND™

| | | |
|-------|-----------|--------------|
| SIZE | CAGE CODE | DRAWING NO |
| ③ | 00779 | ③=323143 |
| SCALE | 10:1 | SHEET 1 OF 1 |

Mouser Electronics

Authorized Distributor

Click to View Pricing, Inventory, Delivery & Lifecycle Information:

[TE Connectivity:](#)

[323143](#)