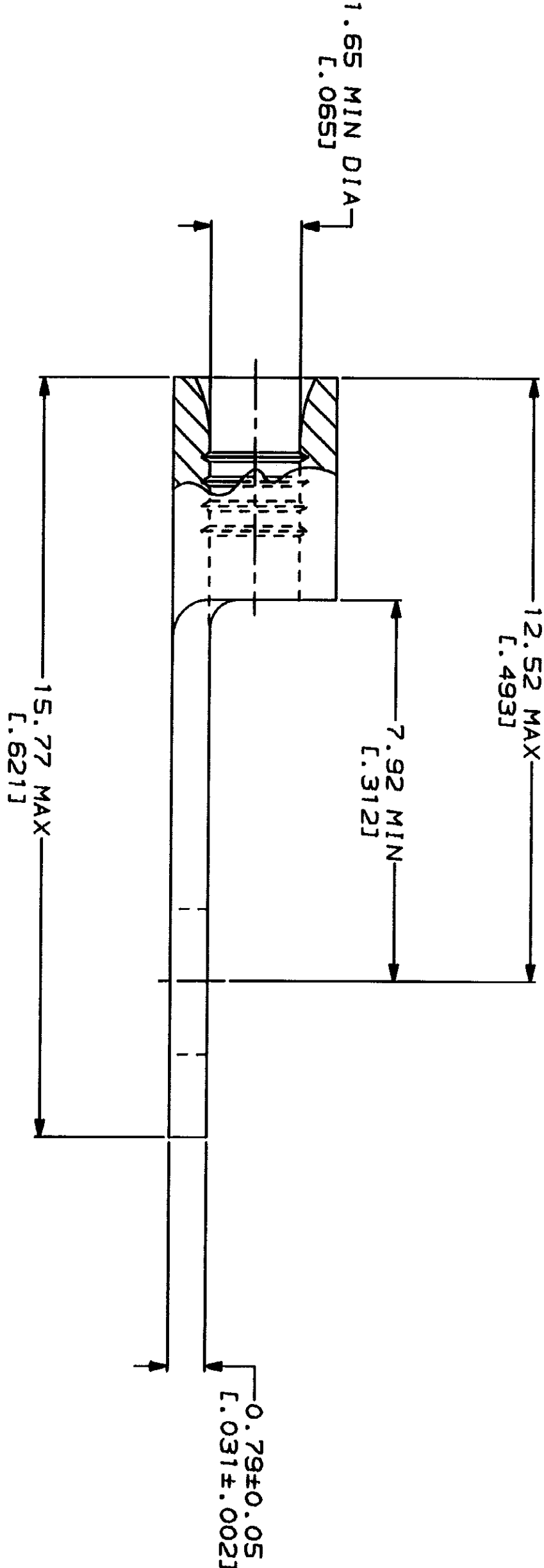
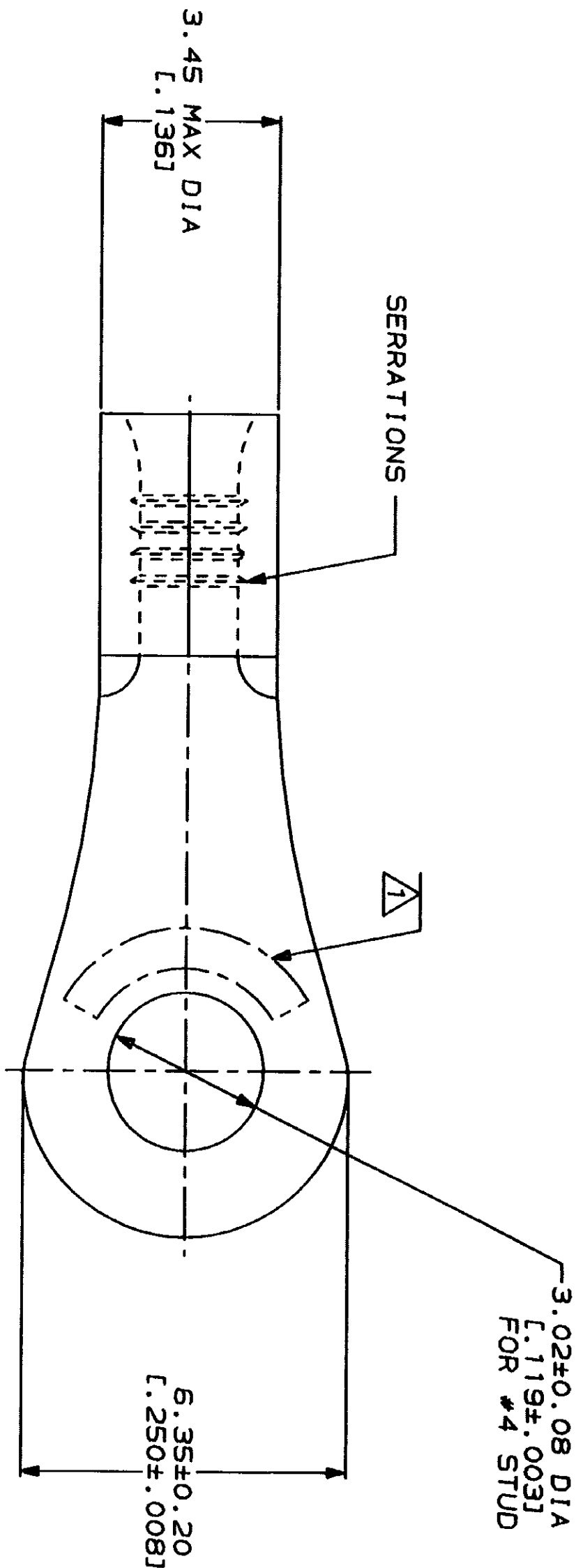


LOC		DIST		REV		DATE		APPD	
6	14	P	P	ZONE	LTR	DESCRIPTION		DATE	
				B		REVISED PER 0720-0230-93		2/28/94	

**METRIC**  
DIMENSIONS LISTED IN mm [ INCHES ]



<b>AMP</b> WIRE RANGE		<b>UL</b> E13288 Listed
22-16 AWG STRANDED		22-16 AWG STRANDED
LR7189 Certified		MILITARY P/N AND CLASS
NOT CERTIFIED		NOT APPLICABLE

1 STAMP AMP 22-18\* APPROX AS SHOWN  
22-16 TERMINALS ARE STAMPED 22-18 IN  
ACCORDANCE WITH MILITARY SPECIFICATION  
MIL-T-7928, COMMERCIAL WIRE RANGE IS 22-16

AMP INCORPORATED CUSTOMER SERVICE SYSTEMS		MAX RECOMMENDED OPERATING TEMPERATURE: 170°C MAX
FOR ADDITIONAL PRODUCT INFORMATION OR COPIES OF DRAWINGS AND TECHNICAL DOCUMENTS	PRODUCT INFORMATION CENTER 1-800-522-6752	VOLTAGE RATING: NOT APPLICABLE
FOR APPLICATION TOOLING INFORMATION	TOOLING ASSISTANCE CENTER 1-800-722-1111	WIRE CROSS SECTIONAL AREA RANGE: 0.26-1.65mm <sup>2</sup> [509-3,260] CIR MILS STRANDED
FOR ORDER ENTRY	1-800-526-5142	THIS DRAWING IS A STANDARD DRAWING FOR TERMINAL, RING TONGUE, BUDGET AND THE COMPANY'S STANDARD FOR CONSTRUCTION SHOULD BE CONSULTED FOR THE LATEST REVISION.

DO NOT SCALE PRINT. UNLESS SPECIFIED DIMENSIONS IN MILLIMETERS— TOLERANCES ON : 2 P.L.C DEC # - 3 P.L.C DEC # - ANGLES # - MATERIAL COPPER PER ASTM B-152 ANNEALED		DR 2-3-93 TA BRINKMAN CHK 2-3-93 DA PATTERSON APPD 2-3-93 DE MILLER APPD 2-3-93 JL HECKLEY PRODUCT SPEC - 	
--	--	--	--

322418  
PART NO

322418

# Mouser Electronics

Authorized Distributor

Click to View Pricing, Inventory, Delivery & Lifecycle Information:

[TE Connectivity:](#)

[322418](#)