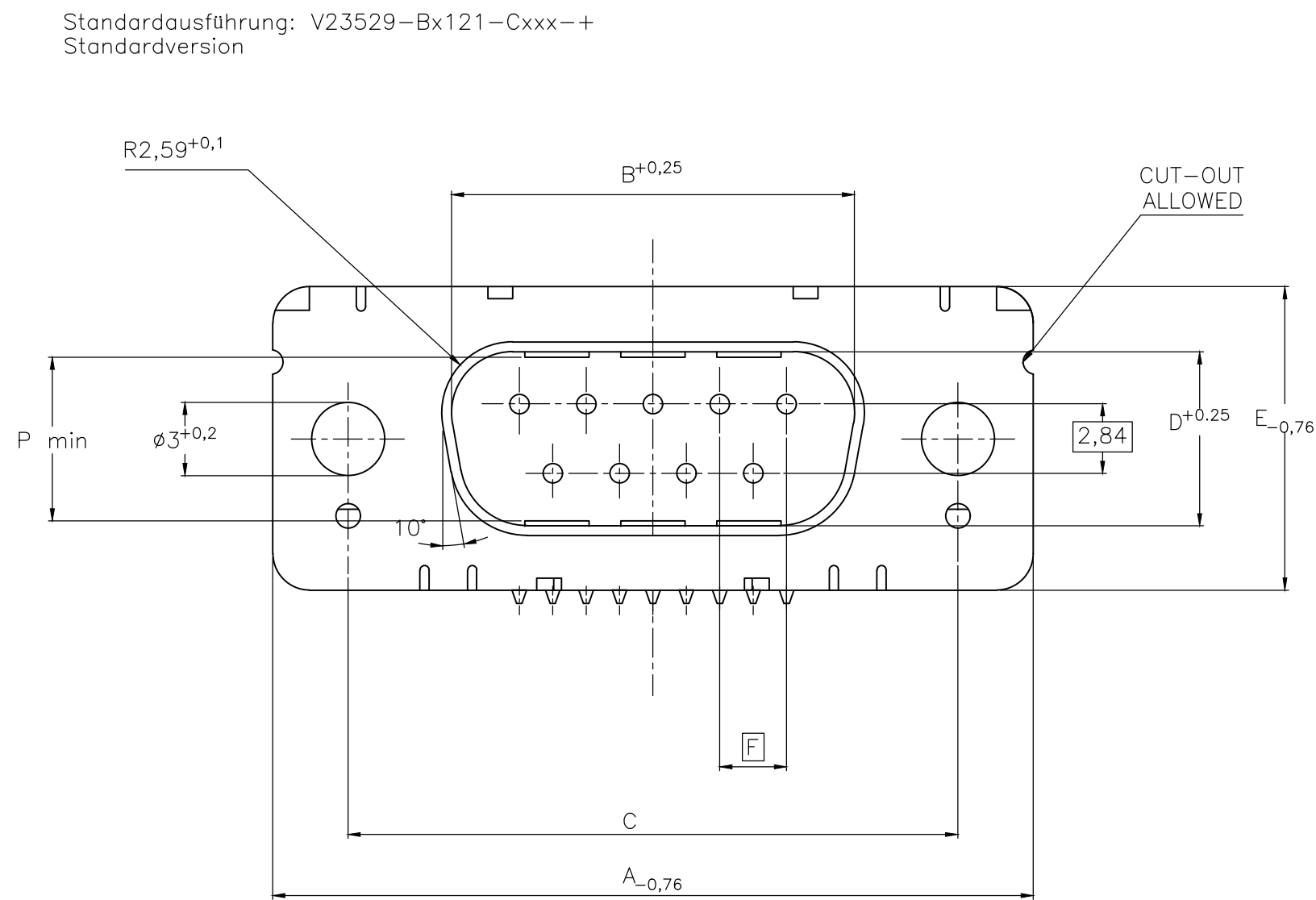


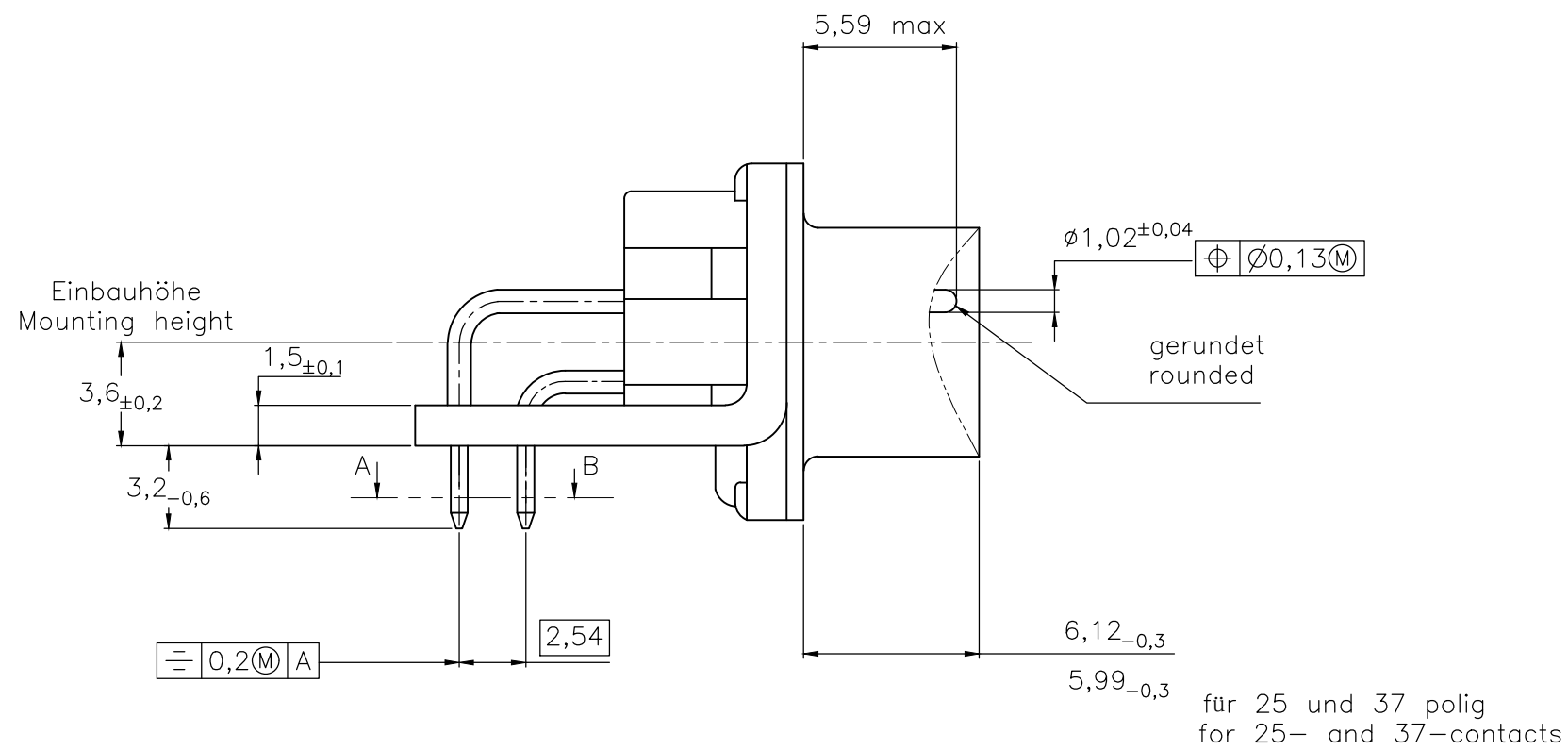
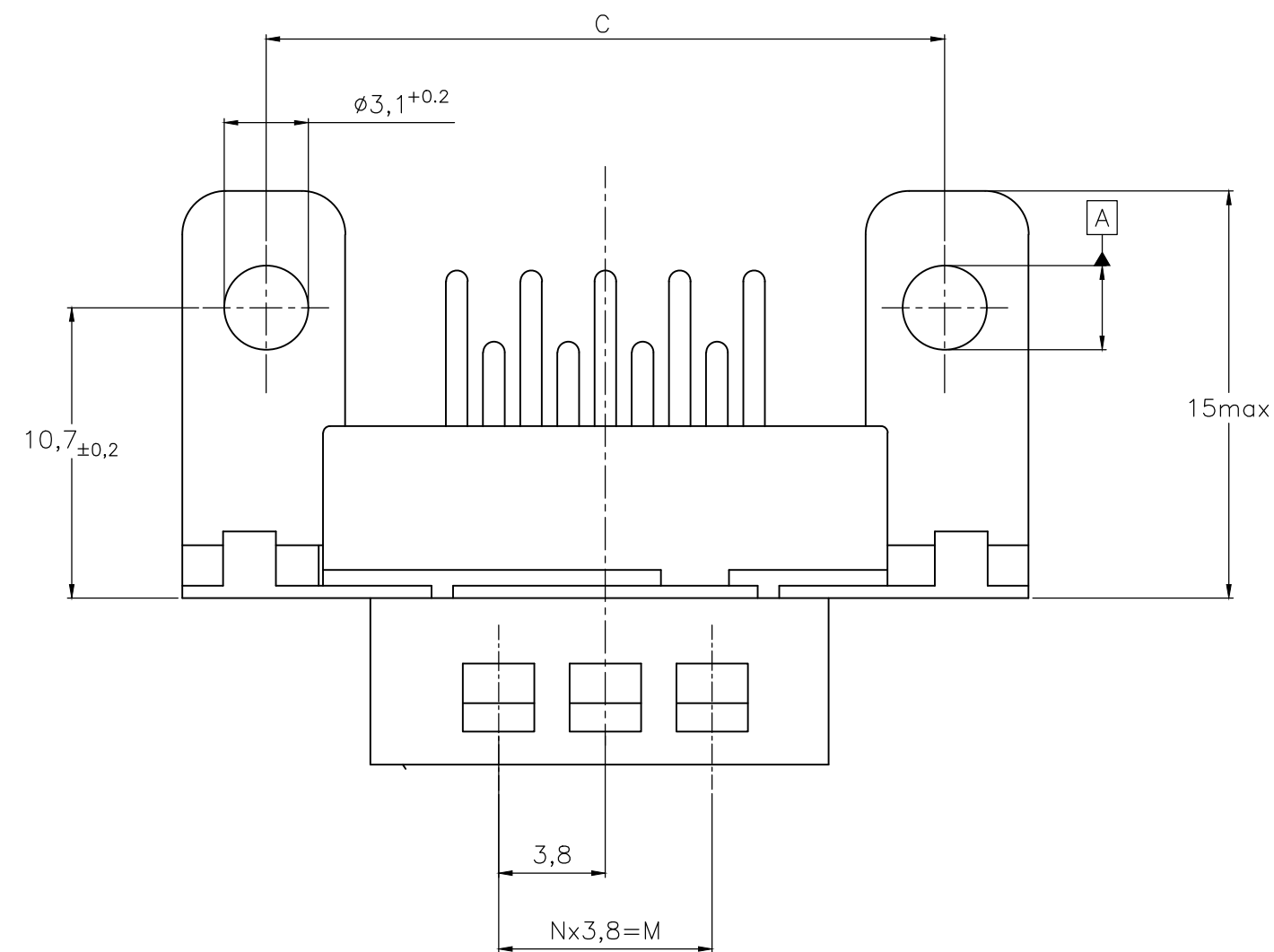
REVISIONS					
P	LTR	DESCRIPTION	DATE	DWN	APVD
	H	REVISED PER ECO-17-017772	25MAY2018	AP	DG

D

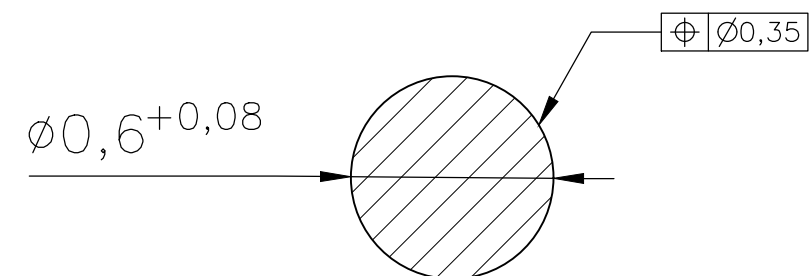


C

B



Schnitt AB des Lötanschlusses
Cross-section AB of solderpin
(20:1)



Ordercode Sachnr	Contacts Polzahl	Mass/Dimension									
		A	B	C	D	E	F	M	N	P	
..-Cx09-+	09	31,19	16,79	25,0 ^{+0,12} _{-0,13}	8,23	12,93	2,74	7,6	2	7,72	
..-Cx15-+	15	39,52	25,12	33,3 ^{+0,15} _{-0,1}	8,23	12,93	2,74	15,2	4	7,69	
..-Cx25-+	25	53,42	38,84	47,04 ^{+0,13} _{-0,13}	8,23	12,93	2,76	26,6	7	7,65	
..-Cx37-+	37	69,7	55,30	63,5 ^{+0,13} _{-0,13}	8,23	12,93	2,76	41,8	11	7,65	

Anforderungsstufe/Performance level 1)

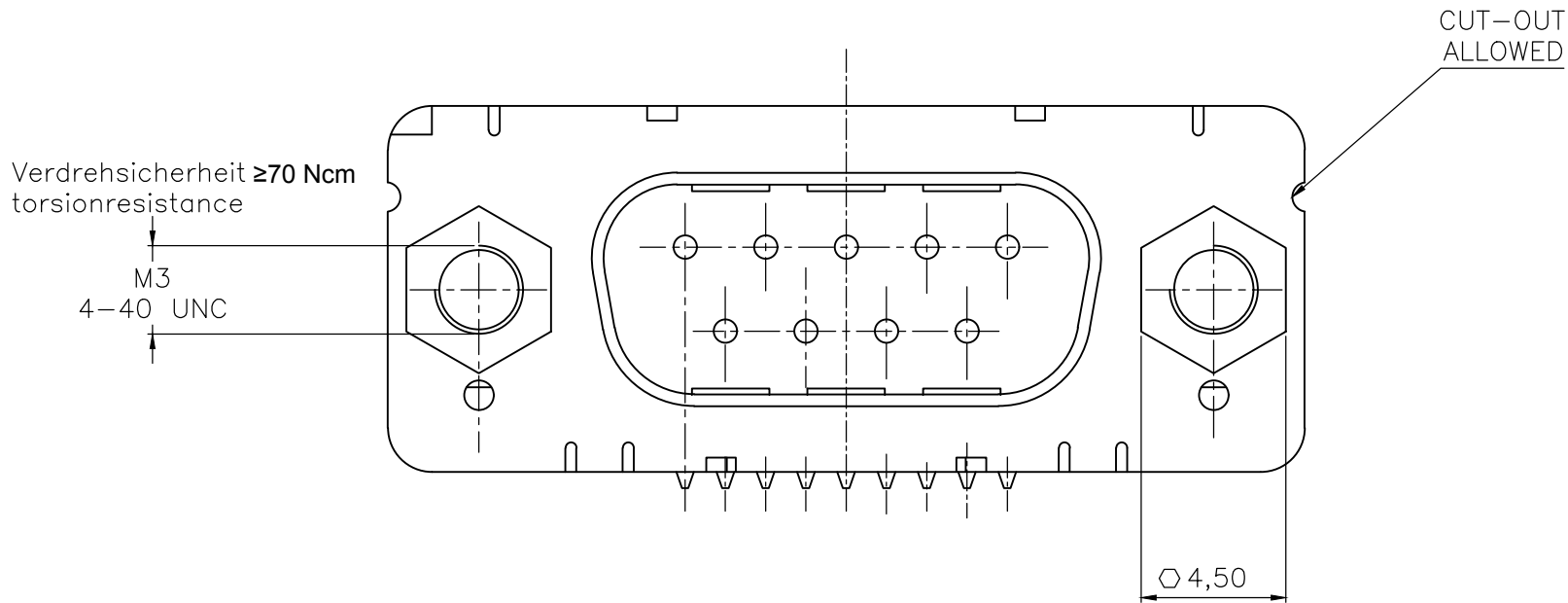
OLD PN: V23529-B*****-C***-*-7427

1) nach DIN 41652 T.2 und T.4
according to DIN 41652 T.2 and T.4

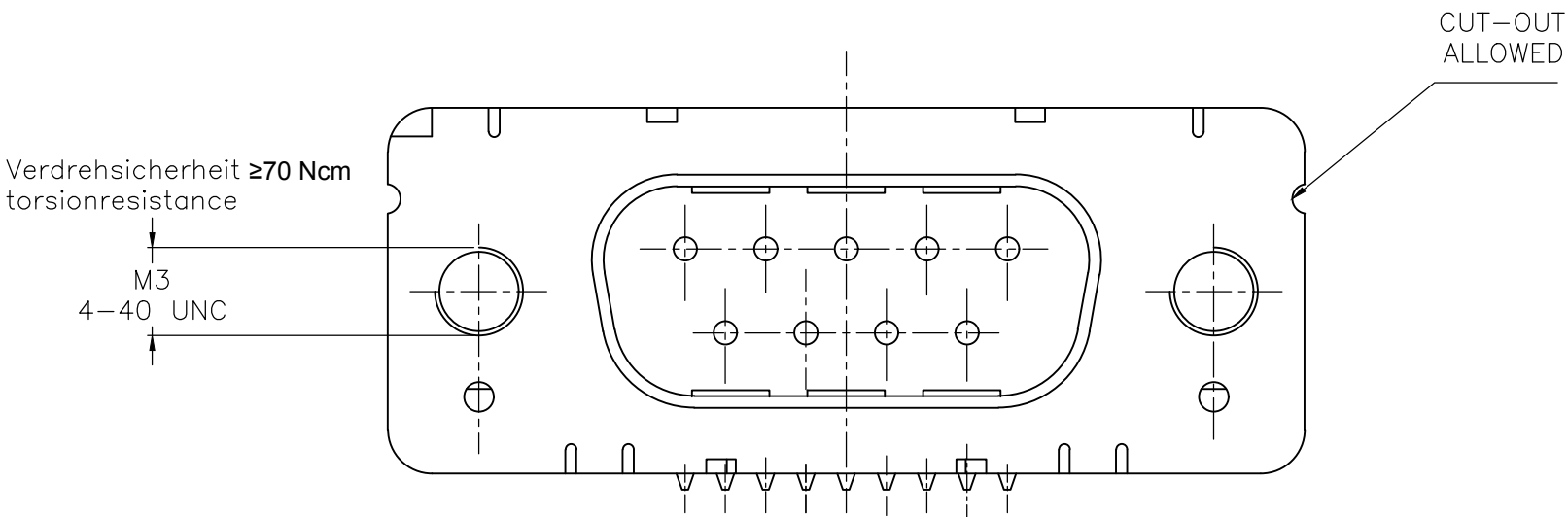
THIS DRAWING IS A CONTROLLED DOCUMENT. DIMENSIONING AND TOLERANCING PER ASME Y14.5M-2009		DWN GNANI JADAV A E	07JAN10	TE Connectivity	
DIMENSIONS: mm		CHK K.MALCZYK	-		
		APVD K.MALCZYK	-	NAME Sub-D 90° Lötanschluss Stiftheise Einbauhöhe 3,6 mm D-Sub 90°solder version Pin connector mounting height 3,6 mm	
		PRODUCT SPEC	-	SIZE A2	
MATERIAL -		APPLICATION SPEC	-	CAGE CODE 00779	DRAWING NO C=2-1393480-1
FINISH -		WEIGHT 0	0	RESTRICTED TO -	
CUSTOMER DRAWING			SCALE 2:1	SHEET 1 of 6	REV H

REVISIONS					
P	LTR	DESCRIPTION	DATE	DWN	APVD
	-	SEE SHEET 1	-	-	-

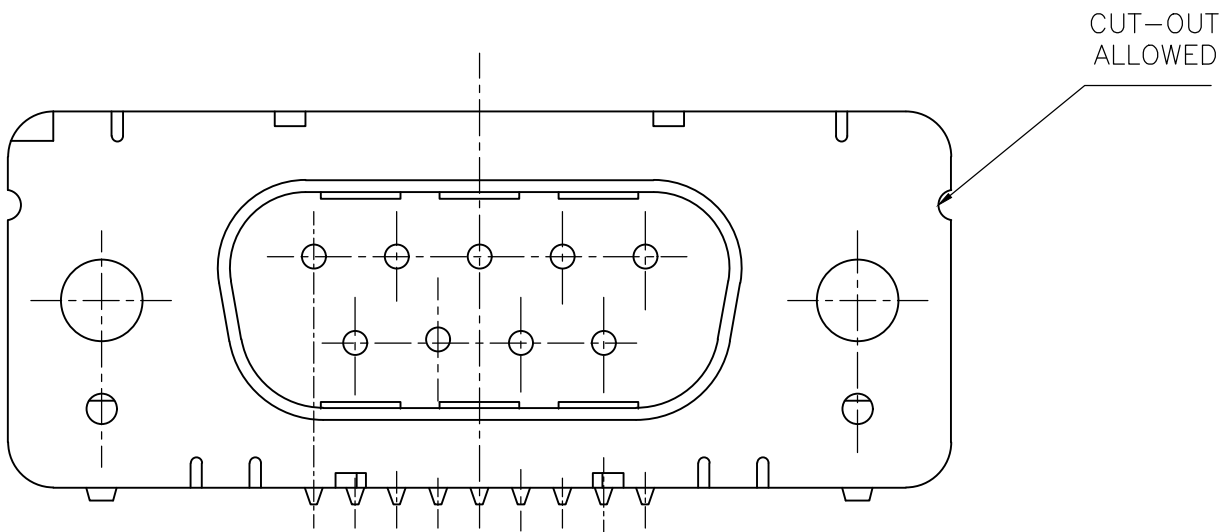
mit Gewindebolzen: M3 V23529-Bxx24-Cxxx-+
with thread lock 4-40 UNC V23529-Bxx25-Cxxx-+



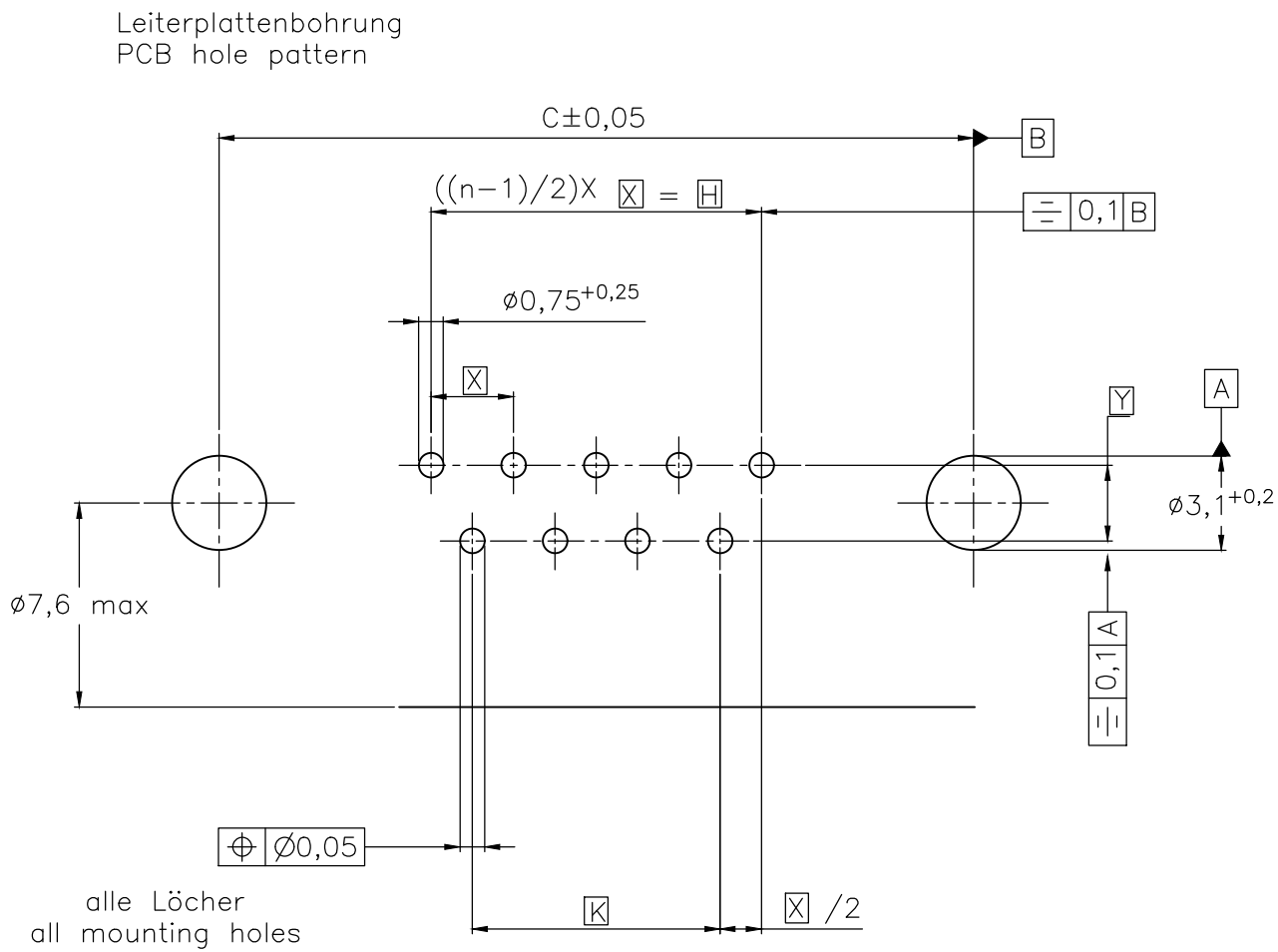
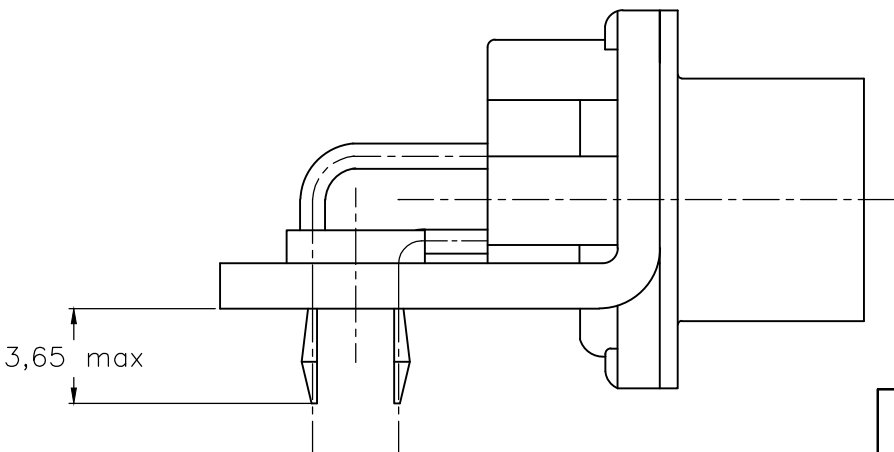
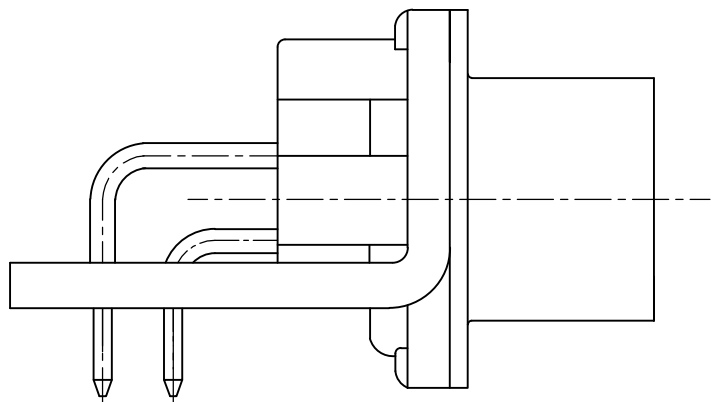
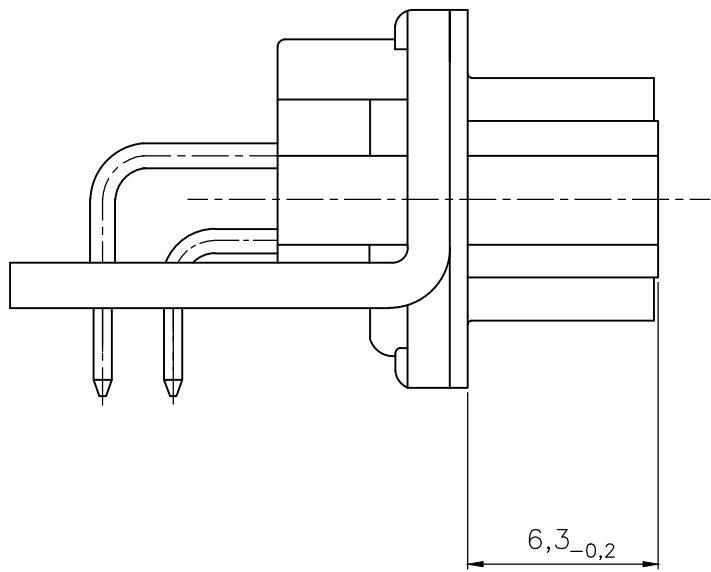
mit Gewinde: M3 V23529-Bxx22-Cxxx-+
with thread 4-40 UNC V23529-Bxx23-Cxxx-+



mit Clipbefestigung: V23529-Bx22x-Cxxx-+
with snap-in



LP-Dicke 1,6±0,13mm, Loch $\varnothing 3,1^{+0,2}$
PC-board-thickness 1,6±0,13mm, Hole $\varnothing 3,1^{+0,2}$



Mass Dimension	Polzahl n Number of contacts n			
	9	15	25	37
C	25	33,3	47,04	63,5
H	10,96	19,18	33,12	49,68
K	8,22	16,44	30,36	46,92
X	2,74	2,74	2,76	2,76
Y	2,54			

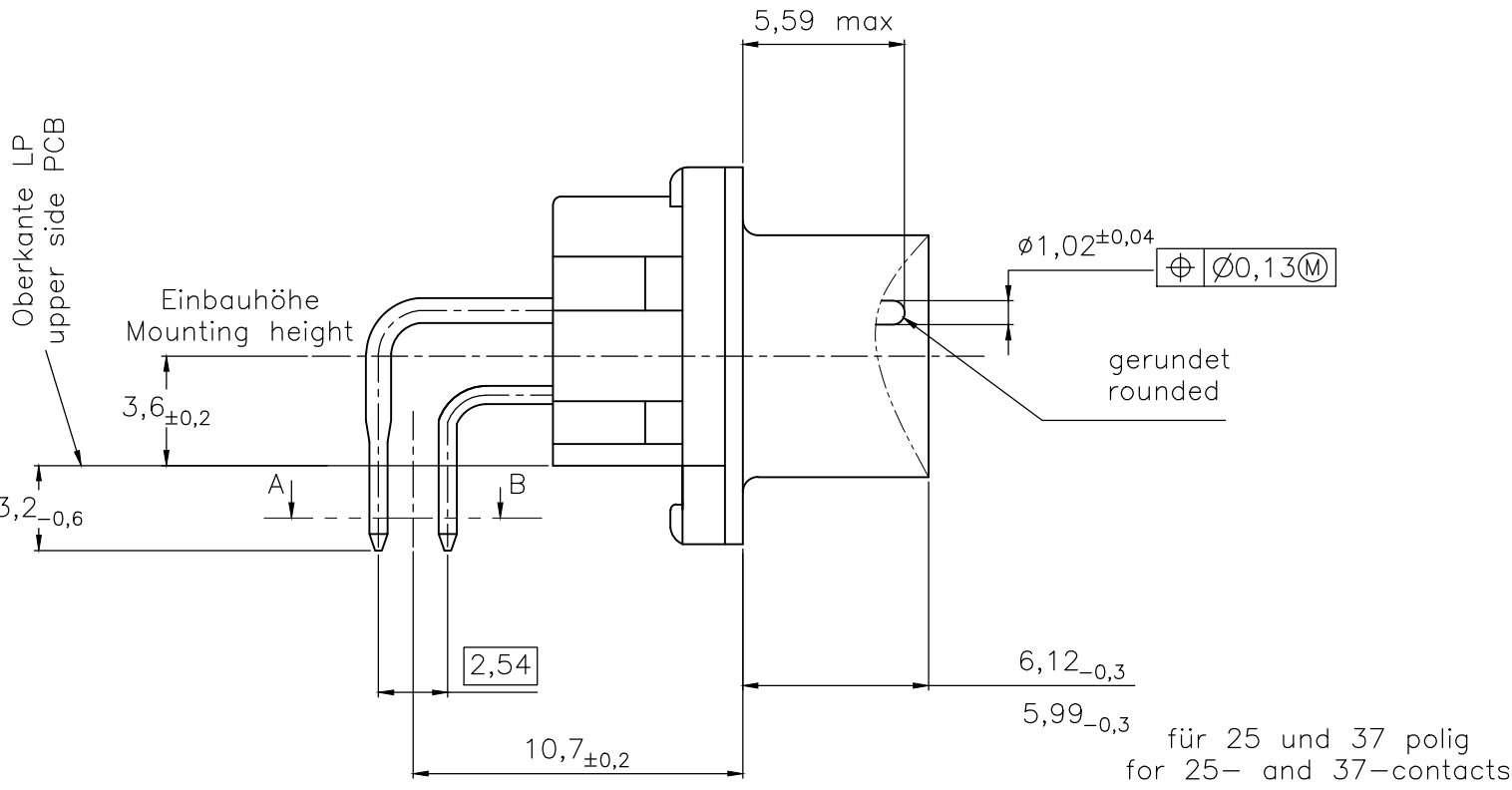
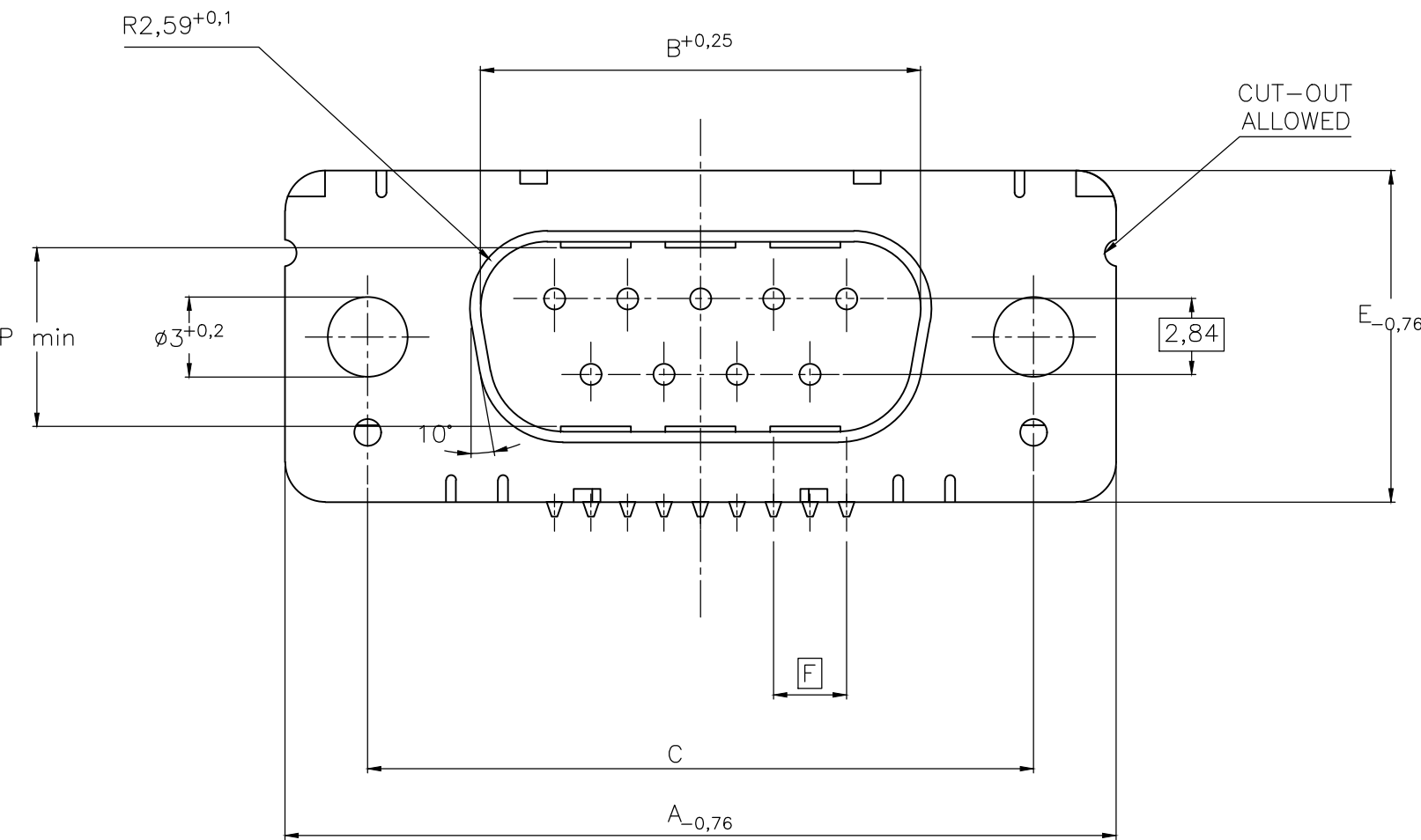
1) nach DIN 41652 T,2 UND T,4
according to DIN 41652 p,2 AND p,4

OLD PN: V23529-B*****-C***-*-7427

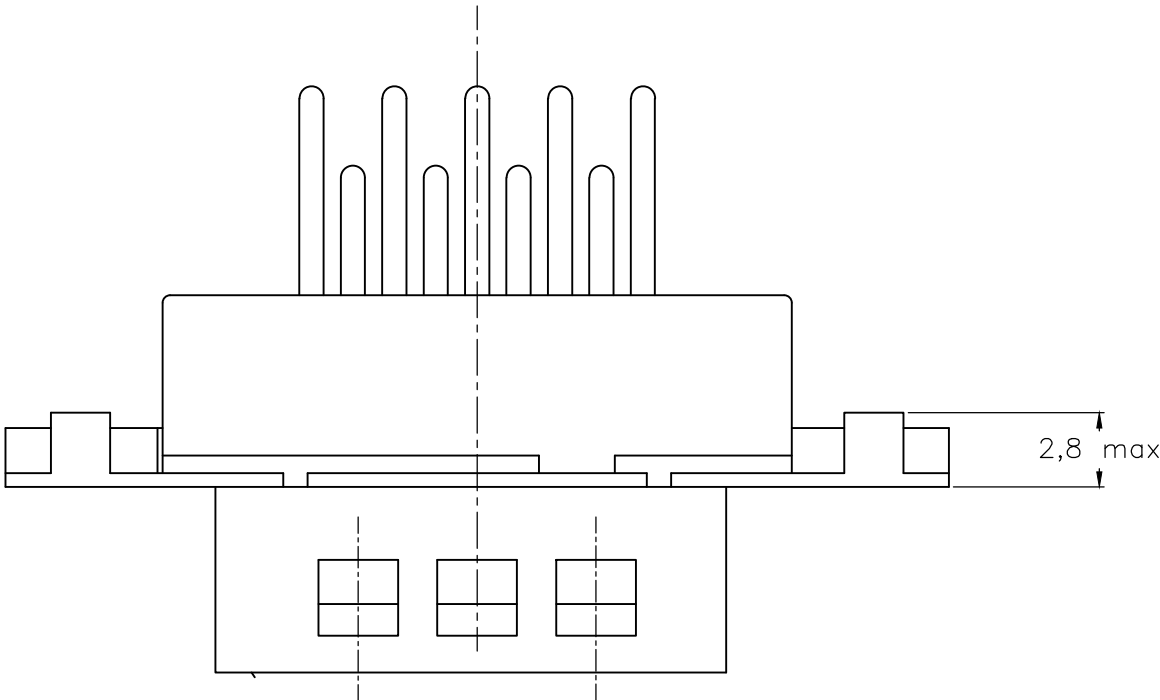
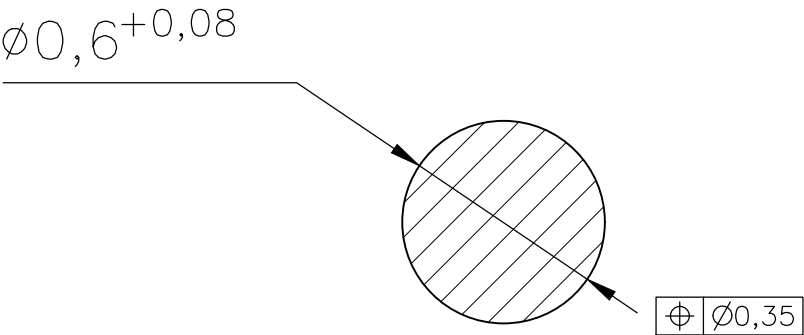
THIS DRAWING IS A CONTROLLED DOCUMENT. DIMENSIONING AND TOLERANCING PER ASME Y14.5M-2009		DWN GNANI JADAV A E 07JAN10	TE Connectivity		
		CHK K.MALCZYK			
DIMENSIONS: mm		APVD K.MALCZYK	NAME Sub-D 90° Löt Ausführung Stiftleiste Einbauhöhe 3,6 mm D-Sub 90°solder version Pin connector mounting height 3,6 mm		
		PRODUCT SPEC			
TOLERANCES UNLESS OTHERWISE SPECIFIED:		APPLICATION SPEC	SIZE A2		
MATERIAL -		WEIGHT -	CAGE CODE 00779		
FINISH -		DRAWING NO C=2-1393480-1			RESTRICTED TO -
CUSTOMER DRAWING			SCALE 2:1	SHEET 2 of 6	REV H

REVISIONS					
P	LTR	DESCRIPTION	DATE	DWN	APVD
-	-	SEE SHEET 1	-	-	-

Standardausführung ohne Winkel: V23529-B50x1-Cxxx-+
Standardversion without bracket



Schnitt AB des Lötanschlusses
Cross-section AB of solderpin
(20:1)



Ordercode Sachnr	Contacts Polzahl	Mass/Dimension									
		A	B	C	D	E	F	M	N	P	
..-Cx09-+	09	31,19	16,79	25,0 $\begin{smallmatrix} +0,12 \\ -0,13 \end{smallmatrix}$	8,23	12,93	2,74	7,6	2	7,72	
..-Cx15-+	15	39,52	25,12	33,3 $\begin{smallmatrix} +0,15 \\ -0,1 \end{smallmatrix}$	8,23	12,93	2,74	15,2	4	7,69	
..-Cx25-+	25	53,42	38,84	47,04 $\begin{smallmatrix} +0,13 \\ -0,13 \end{smallmatrix}$	8,23	12,93	2,76	26,6	7	7,65	
..-Cx37-+	37	69,7	55,30	63,5 $\begin{smallmatrix} +0,13 \\ -0,13 \end{smallmatrix}$	8,23	12,93	2,76	41,8	11	7,65	

Anforderungsstufe/Performance level 1)
OLD PN: V23529-B****-C***-*7427

1) nach DIN 41652 T.2 und T.4
according to DIN 41652 T.2 and T.4

THIS DRAWING IS A CONTROLLED DOCUMENT.
DIMENSIONING AND TOLERANCING PER ASME Y14.5M-2009

DIMENSIONS:
mm

TOLERANCES UNLESS OTHERWISE SPECIFIED:

0 PLC ± -
1 PLC ± -
2 PLC ± -
3 PLC ± -
4 PLC ± -
ANGLES ± -
FINISH -

MATERIAL -

DWN 07JAN10
GNANI JADAV A E
CHK K.MALCZYK
APVD K.MALCZYK
PRODUCT SPEC
APPLICATION SPEC
WEIGHT -
CUSTOMER DRAWING

TE Connectivity

NAME Sub-D 90° Lötanschluss Stiftleiste
Einbauhöhe 3,6 mm
D-Sub 90°solderversion Pin connector
mounting height 3,6 mm

SIZE A2
CAGE CODE 00779
DRAWING NO C=2-1393480-1
RESTRICTED TO -

SCALE 2:1
SHEET 3 of 6
REV H

REVISIONS					
P	LTR	DESCRIPTION	DATE	DWN	APVD
-	-	SEE SHEET 1	-	-	-

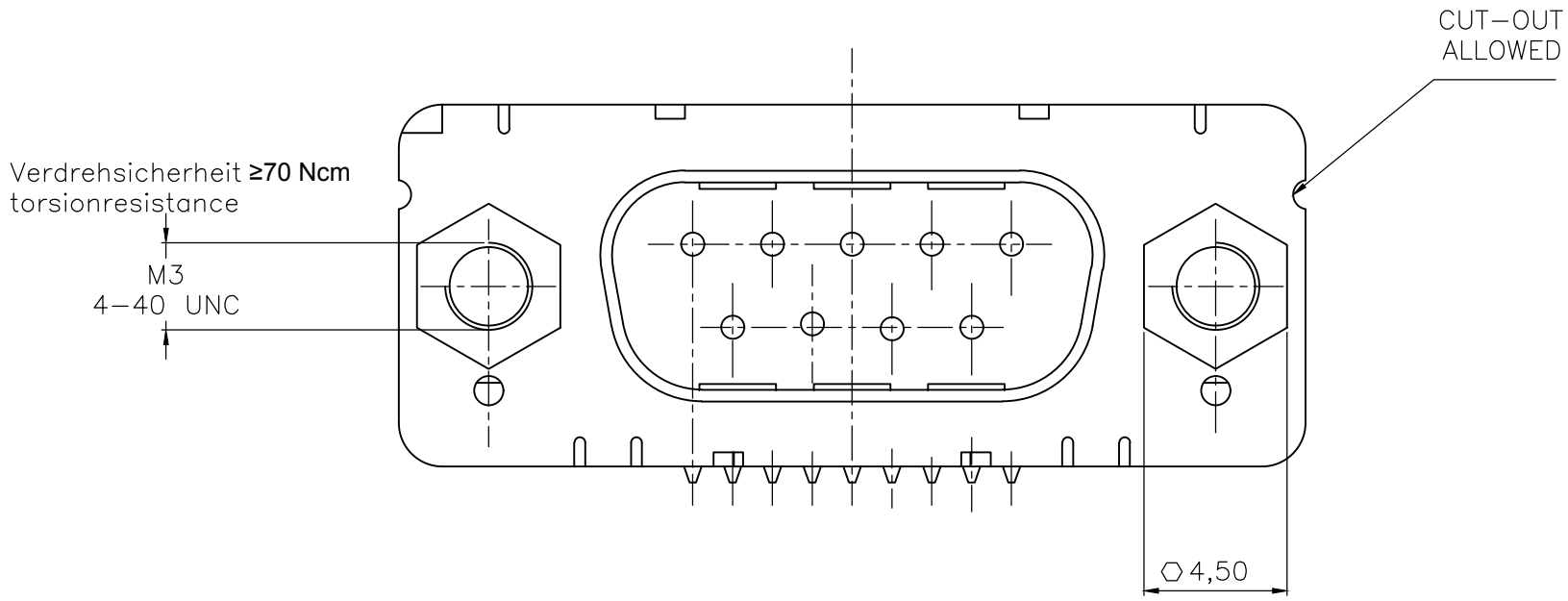
D

C

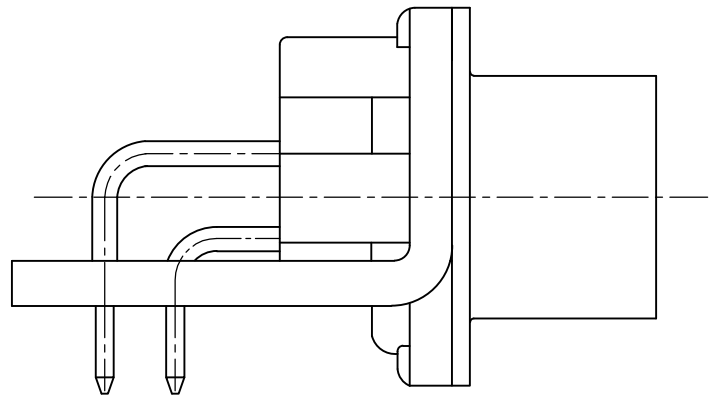
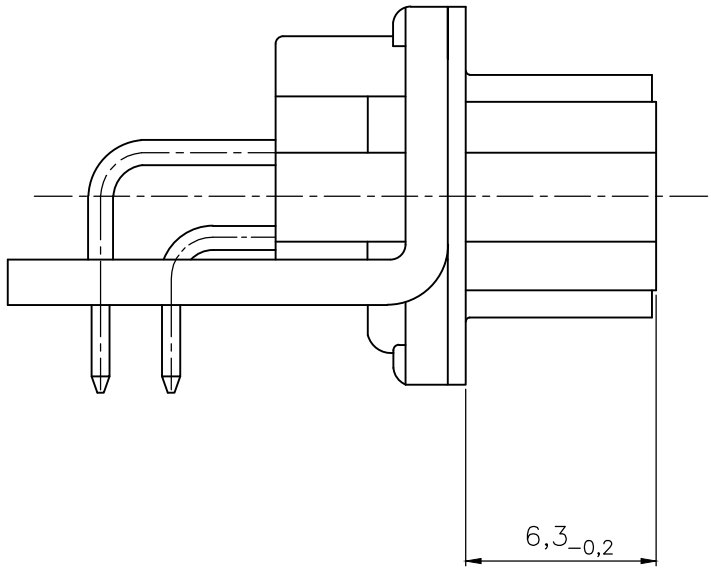
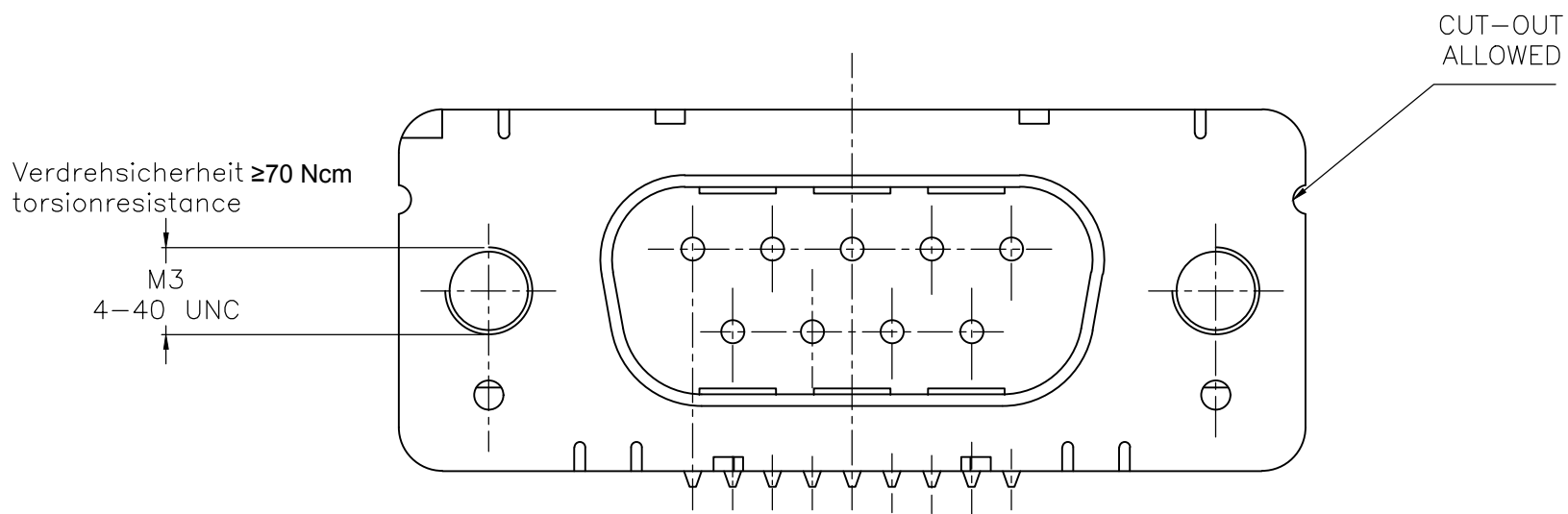
B

A

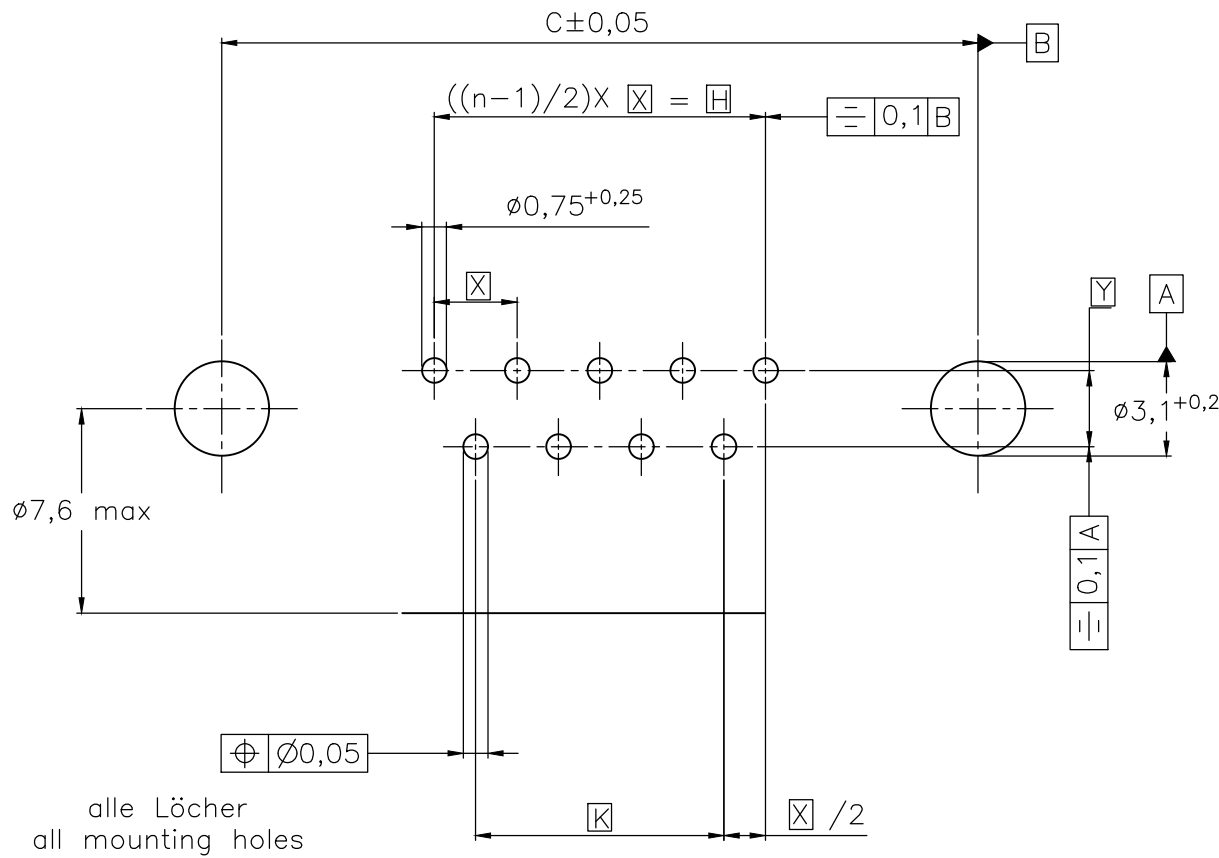
mit Gewindebolzen: M3 V23529-B50x4-Cxxx-+
with thread lock 4-40 UNC V23529-B50x5-Cxxx-+



mit Gewinde: M3 V23529-B50x2-Cxxx-+
with thread 4-40 UNC V23529-B50x3-Cxxx-+



Leiterplattenbohrung
PCB hole pattern



Mass Dimension	Polzahl n Number of contacts n			
	9	15	25	37
C	25	33,3	47,04	63,5
H	10,96	19,18	33,12	49,68
K	8,22	16,44	30,36	46,92
X	2,74	2,74	2,76	2,76
Y	2,54			

1) nach DIN 41652 T,2 UND T,4
according to DIN 41652 p,2 AND p,4

OLD PN: V23529-B****-C***-* -7427

THIS DRAWING IS A CONTROLLED DOCUMENT. DIMENSIONING AND TOLERANCING PER ASME Y14.5M-2009		DWN GNANI JADAV A E CHK K.MALCZYK APVD K.MALCZYK PRODUCT SPEC APPLICATION SPEC WEIGHT CUSTOMER DRAWING	07JAN10 - - - - -	TE TE Connectivity		NAME Sub-D 90° Lötanschluss Stifteleiste Einbauhöhe 3,6 mm D-Sub 90°solder version Pinconnector mounting height 3,6 mm	
DIMENSIONS: mm	TOLERANCES UNLESS OTHERWISE SPECIFIED:	SIZE A2		CAGE CODE 00779	DRAWING NO C=2-1393480-1	RESTRICTED TO -	
	0 PLC ± - 1 PLC ± - 2 PLC ± - 3 PLC ± - 4 PLC ± - ANGLES ± - FINISH	SCALE 2:1		SHEET 4 of 6	REV H		

D

C

B

A

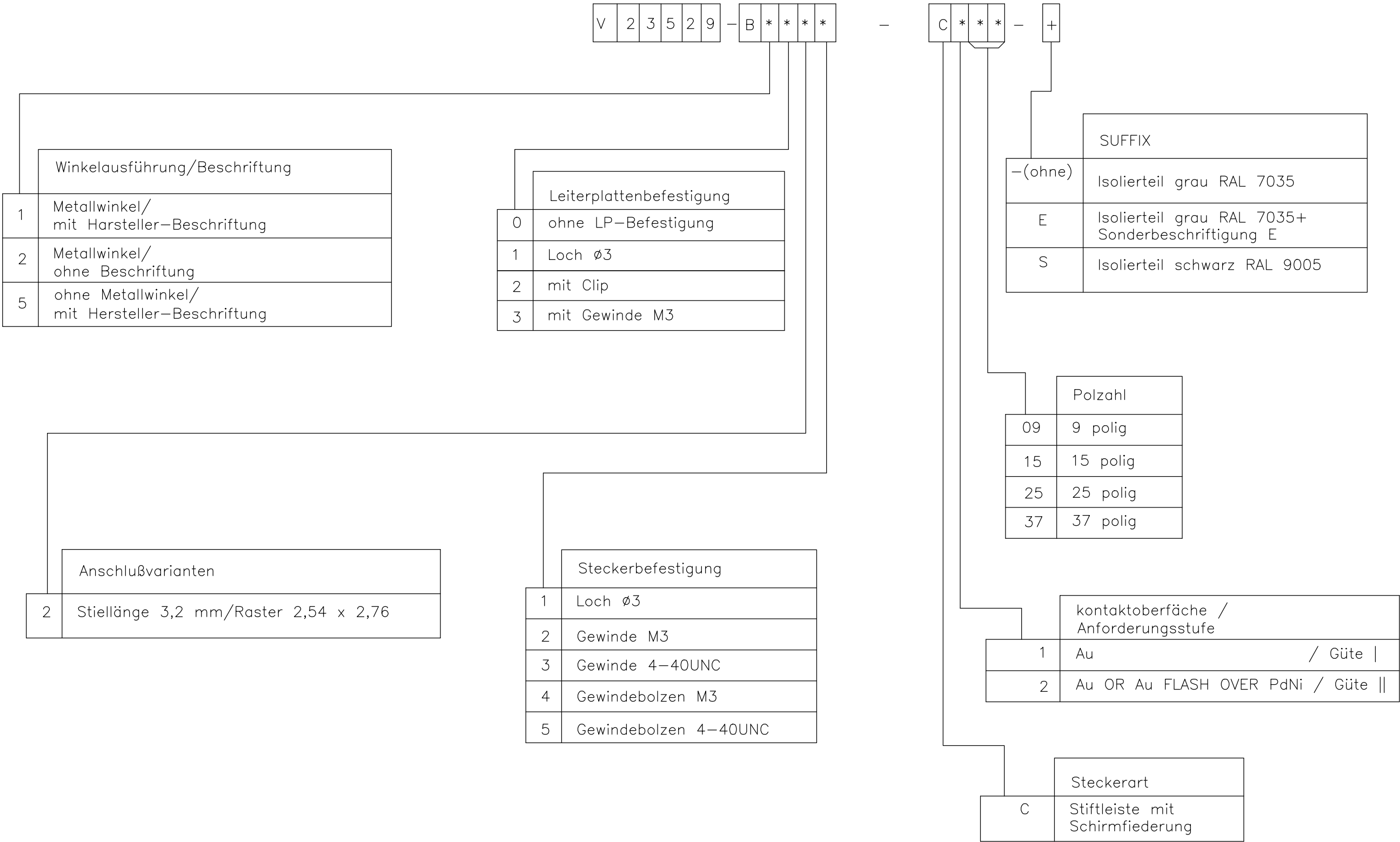
D

C


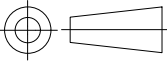
B

A

1) nach DIN 41652 T.2 und T.4
according to DIN 41652 p.2 and p.4



OLD PN: V23529-B****-C***-*—7427

THIS DRAWING IS A CONTROLLED DOCUMENT. DIMENSIONING AND TOLERANCING PER ASME Y14.5M-2009		DWN GNANI JADAV A E	07JAN10	 TE Connectivity	
DIMENSIONS: mm		CHK K.MALCZYK	—		
		APVD K.MALCZYK	—	NAME Sub-D 90° Löt Ausführung Stiftleiste Einbauhöhe 3,6 mm D-Sub 90° solder version Pin connector mounting height 3,6 mm	
		PRODUCT SPEC —	—		
TOLERANCES UNLESS OTHERWISE SPECIFIED: 0 PLC ± — 1 PLC ± — 2 PLC ± — 3 PLC ± — 4 PLC ± — ANGLES ± —		APPLICATION SPEC —	—	SIZE A2	CAGE CODE 00779
MATERIAL —		WEIGHT —	—	DRAWING NO C=2-1393480-1	RESTRICTED TO —
CUSTOMER DRAWING			SCALE 2:1	SHEET 5 of 6	REV H

REVISIONS					
P	LTR	DESCRIPTION	DATE	DWN	APVD
	-	SEE SHEET 1	-	-	-

D

D

C

C

B

B

A

A

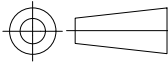
Active part numbers. Contact TE CONNECTIVITY for other configuration availability

Old Part Number	TE CONNECTIVITY Part Number	
V23529-B1121-C209	2-1393480-1	
V23529-B1121-C215	2-1393480-2	
V23529-B1121-C225	2-1393480-3	
V23529-B1121-C237	2-1393480-4	
V23529-B1122-C209	3-1393480-2	
V23529-B1122-C215	3-1393480-3	
V23529-B1122-C225	2-1392010-8	
V23529-B1122-C237	3-1392010-6	
V23529-B1123-C209	4-1393480-0	
V23529-B1123-C215	4-1393480-1	
V23529-B1123-C225	4-1393480-2	
V23529-B1123-C237	4-1393480-3	
V23529-B1125-C125	5-1393480-1	OBSOLETE
V23529-B1125-C209	5-1393480-2	OBSOLETE
V23529-B1125-C215	5-1393480-3	OBSOLETE
V23529-B1125-C225	5-1393480-4	OBSOLETE
V23529-B1125-C237	3-1392010-5	OBSOLETE
V23529-B1221-C109	5-1393480-8	
V23529-B1221-C209	5-1393480-9	

Old Part Number	TE CONNECTIVITY Part Number		
V23529-B1221-C215	6-1393480-0		
V23529-B1222-C209	7-1393480-4	OBSOLETE	
V23529-B1222-C215	7-1393480-5	OBSOLETE	
V23529-B1222-C225	7-1393480-6	OBSOLETE	
V23529-B1222-C237	7-1393480-7	OBSOLETE	
V23529-B1223-C209	8-1393480-5		
V23529-B1223-C215	8-1393480-6		
V23529-B1223-C225	8-1393480-7		
V23529-B1223-C237	8-1393480-8		
V23529-B1224-C209	9-1393480-4		
V23529-B1224-C215	9-1393480-5		
V23529-B1224-C225	9-1393480-6		
V23529-B1225-C109	1393481-4		
V23529-B1225-C209	1393481-5		
V23529-B1225-C215	3-1392010-3		
V23529-B1225-C225	1393481-6	2173194-1	OBSOLETE
V23529-B1225-C237	3-1392010-4		
V23529-B2121-C209	1-1393481-0		
V23529-B2221-C209	1-1393481-2		

1) nach DIN 41652 T.2 und T.4
according to DIN 41652 p.2 and p.4

OLD PN: V23529-B****-C****-*-7427

THIS DRAWING IS A CONTROLLED DOCUMENT. DIMENSIONING AND TOLERANCING PER ASME Y14.5M-2009		DWN 07JAN10 GNANI JADAV A E		TE Connectivity			
DIMENSIONS: mm		CHK K.MALCZYK		NAME			
		APVD K.MALCZYK		Sub-D 90° Lötanschluss Stifteleiste Einbauhöhe 3,6 mm D-Sub 90°solder version Pin connector mounting height 3,6 mm			
		PRODUCT SPEC					
		APPLICATION SPEC					
MATERIAL -		WEIGHT -		SIZE A2	CAGE CODE 00779	DRAWING NO C=2-1393480-1	RESTRICTED TO -
FINISH -		CUSTOMER DRAWING		SCALE 2:1	SHEET 6 of 6	REV H	

2-1393480-1

Mouser Electronics

Authorized Distributor

Click to View Pricing, Inventory, Delivery & Lifecycle Information:

[TE Connectivity:](#)

[9-1393480-6](#)