

THIS DRAWING IS UNPUBLISHED.

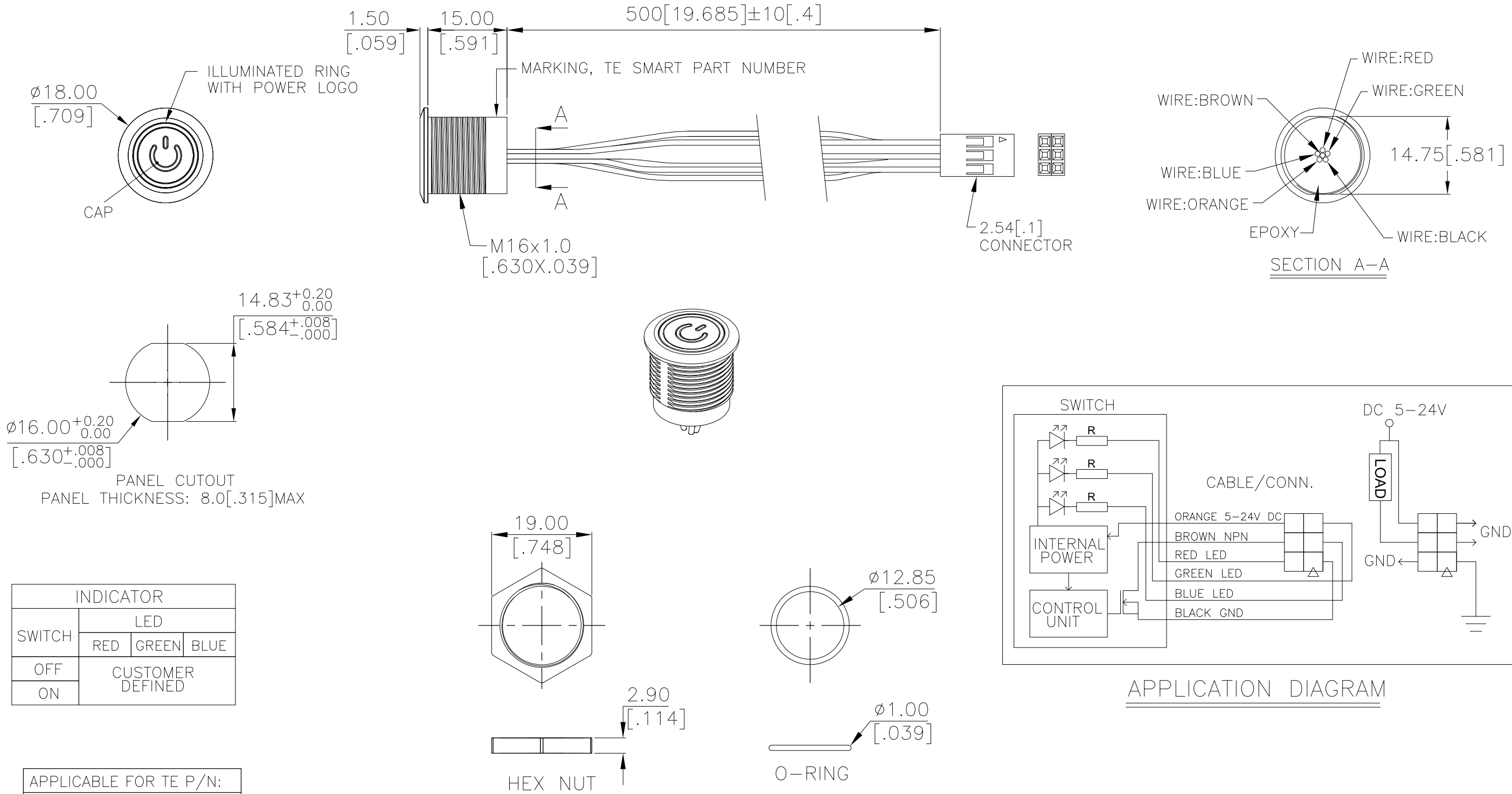
RELEASED FOR PUBLICATION

© COPYRIGHT - TE Connectivity Ltd.

ALL RIGHTS RESERVED.


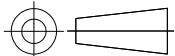
REVISIONS

P	LTR	DESCRIPTION	DATE	DWN	APVD
	3	DRAWING UPDATED	19DEC2018	RSM	AS



APPLICABLE FOR TE P/N:	
2342833-1	
2342833-3	
2342833-5	
2342833-7	
2342833-8	
2342833-9	

PRELIMINARY

THIS DRAWING IS A CONTROLLED DOCUMENT.		DWN GANESH C M 29SEP2018	 TE Connectivity Ltd.				
DIMENSIONS: mm [INCHES]		CHK ALEXANDER SHARPE 29SEP2018					
	TOLERANCES UNLESS OTHERWISE SPECIFIED:  0 PLC ± - 1 PLC ± 0.4[.016] 2 PLC ± 0.25[.010] 3 PLC ± - 4 PLC ± - ANGLES ± -	APVD ALEXANDER SHARPE 29SEP2018	NAME  SWITCH,AV,CAPACITIVE,16mm,FL BTN, ILLUM RING W/POWER LOGO,LED, LEADED W/2x3 REC				
		PRODUCT SPEC  —					
		APPLICATION SPEC  —					
		WEIGHT  —					
MATERIAL  —	FINISH  —	SIZE A3		CAGE CODE 00779	DRAWING NO C-2342833	RESTRICTED TO  —	
CUSTOMER DRAWING					SCALE NTS	SHEET 1 OF 3	REV 3

THIS DRAWING IS UNPUBLISHED.

RELEASED FOR PUBLICATION

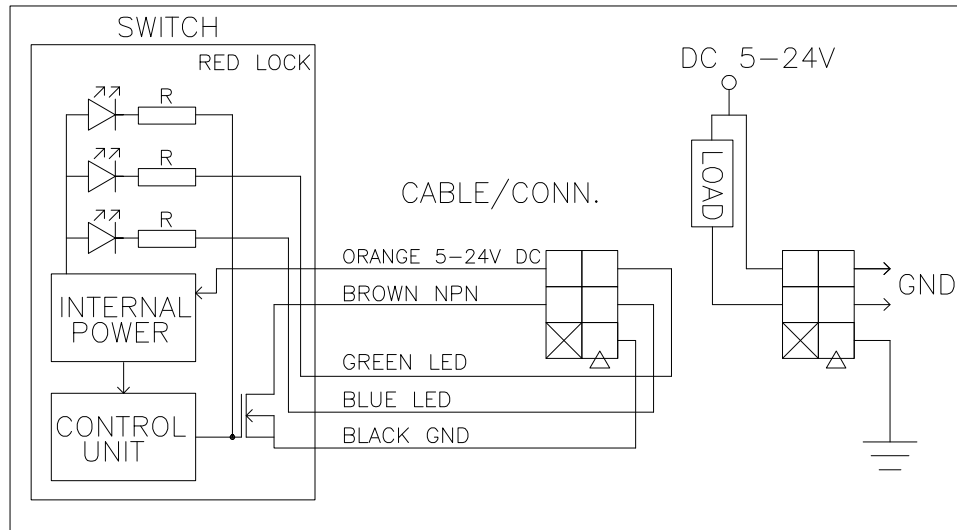
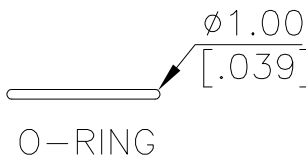
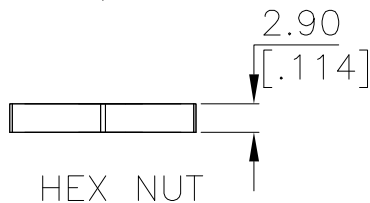
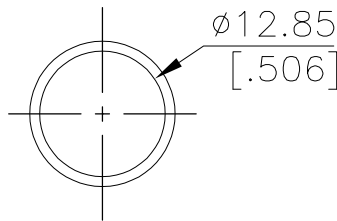
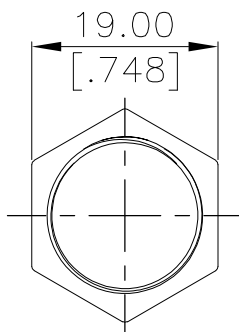
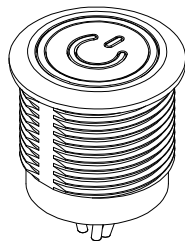
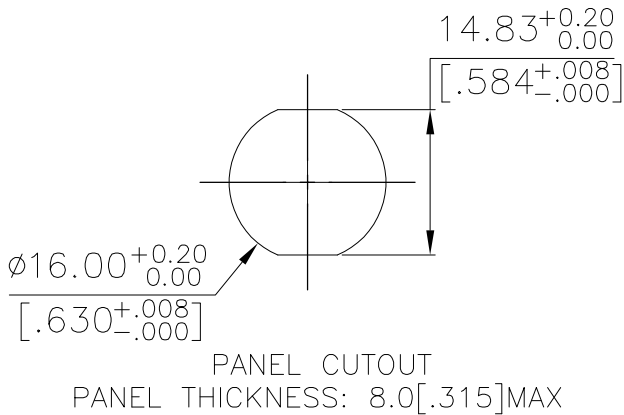
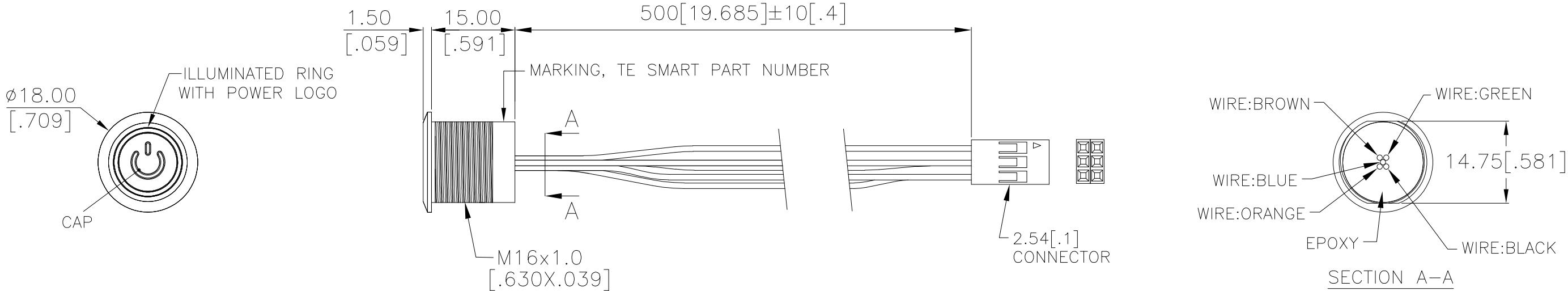
- . - .

© COPYRIGHT - TE Connectivity Ltd.

ALL RIGHTS RESERVED.

REVISIONS

P	LTR	DESCRIPTION	DATE	DWN	APVD
	-	SEE SHEET 1	-	-	-



APPLICATION DIAGRAM

INDICATOR			
SWITCH	LED		
	RED	GREEN	BLUE
OFF	ON	CUSTOMER DEFINED	
ON	OFF		

APPLICABLE FOR TE P/N:
2342833-2
2342833-4
2342833-6

PRELIMINARY

THIS DRAWING IS A CONTROLLED DOCUMENT.		DWN GANESH C M 29SEP2018	TE Connectivity Ltd.		
DIMENSIONS: mm [INCHES]		CHK ALEXANDER SHARPE 29SEP2018			
	TOLERANCES UNLESS OTHERWISE SPECIFIED:	APVD ALEXANDER SHARPE 29SEP2018	NAME		
		PRODUCT SPEC	SWITCH,AV,CAPACITIVE,16mm,FL BTN, ILLUM RING W/POWER LOGO,LED, LEADED W/2x3 REC		
	0 PLC ± - 1 PLC ± 0.4[.016] 2 PLC ± 0.25[.010] 3 PLC ± - 4 PLC ± - ANGLES ± -	APPLICATION SPEC	SIZE	CAGE CODE	DRAWING NO
			A3	00779	C-2342833
MATERIAL	FINISH	WEIGHT	RESTRICTED TO		
-	-	-	-		
CUSTOMER DRAWING			SCALE	SHEET	REV
			NTS	2 of 3	3

THIS DRAWING IS UNPUBLISHED.	RELEASED FOR PUBLICATION —, — .
© COPYRIGHT — TE Connectivity Ltd.	ALL RIGHTS RESERVED.

REVISIONS					
P	LTR	DESCRIPTION	DATE	DWN	APVD
	—	SEE SHEET 1	—	—	—

NOTES:

1. SPECIFICATIONS:
1. OPERATING LIFE: 50 MILLION CYCLES MIN.

2. ACTUATION FORCE: TOUCH, ZERO FORCE

3. RATING: 5–24 VDC@1A MAX.

4. CONTACT RESISTANCE: 1Ω MAX.

5. CURRENT DRAW WITHOUT ILLUMINATION: 2mA MAXIMUM

6. CURRENT DRAW WITH ILLUMINATION: 10mA MAXIMUM

7. OUTPUT MODE: NPN TRANSISTOR

8. OPERATING TEMPERATURE: −20° TO 65°C [−4° TO 149°F]

9. STORAGE TEMPERATURE: −40° TO 85°C [−40° TO 185°F]

10. INGRESS PROTECTION: IP68, PANEL SIDE

11. MOUNTING TORQUE: 2.5Nm MAXIMUM
2. MATERIAL:
1. SEALING: SILICONE, EPOXY

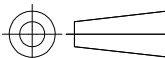
2. O–RING: SILICONE

3. HEX NUT: NICKEL PLATED BRASS

4. WIRE: UL3385, UL10368 OR EQUIVALENT

5. BUSHING: SEE TABLE

6. CAP: SEE TABLE
3. PACKAGING:
- SWITCH ASSEMBLIES ARE INDIVIDUALLY BUNDLED WITH ESD PROTECTION.  
HARDWARE IS NOT ASSEMBLED TO THE SWITCH.
4. COMPLIANCE:
- THE CURRENT STATEMENT OF COMPLIANCE IS AVAILABLE AT TE.COM.
- 5.HARDWARE IS SHIPPED UNASSEMBLED.

PC; STAINLESS STEEL	STAINLESS STEEL 316	RGB	MOMENTARY	AVC16MS16FE1DT5B04	2342833-9		
PC; STAINLESS STEEL	STAINLESS STEEL 304	RGB	MOMENTARY	AVC16MS04FE1DT5B04	2342833-8		
PC; ALUMINUM	ALUMINUM	RGB	MOMENTARY	AVC16MAIOFE1DT5B04	2342833-7		
PC; STAINLESS STEEL	STAINLESS STEEL 316	RED LOCK	LOCKING	AVC16LS16FE13T5B04	2342833-6		
PC; STAINLESS STEEL	STAINLESS STEEL 316	RGB	LOCKING	AVC16LS16FE1DT5B04	2342833-5		
PC; STAINLESS STEEL	STAINLESS STEEL 304	RED LOCK	LOCKING	AVC16LS04FE13T5B04	2342833-4		
PC; STAINLESS STEEL	STAINLESS STEEL 304	RGB	LOCKING	AVC16LS04FE1DT5B04	2342833-3		
PC; ALUMINUM	ALUMINUM	RED LOCK	LOCKING	AVC16LAIOFE13T5B04	2342833-2		
PC; ALUMINUM	ALUMINUM	RGB	LOCKING	AVC16LAIOFE1DT5B04	2342833-1		
CAP MATERIAL	BUSHING MATERIAL	LED COLOR	CONTACT CONFIGURATION	TE SMART PART NUMBER	PART NUMBER		
THIS DRAWING IS A CONTROLLED DOCUMENT.		DWN GANESH C M	<div>TE Connectivity Ltd.</div>				
		CHK ALEXANDER SHARPE					
DIMENSIONS: mm [INCHES]	TOLERANCES UNLESS OTHERWISE SPECIFIED:  0 PLC ± - 1 PLC ± 0.4[.016] 2 PLC ± 0.25[.010] 3 PLC ± - 4 PLC ± - ANGLES ± -	APVD ALEXANDER SHARPE	NAME  SWITCH,AV,CAPACITIVE,16mm,FL BTN, ILLUM RING W/POWER LOGO,LED, LEADED W/2x3 REC				
		PRODUCT SPEC —					
MATERIAL  —		FINISH  —	APPLICATION SPEC —	SIZE	CAGE CODE	DRAWING NO	RESTRICTED TO  —
			WEIGHT	A3	00779	C=2342833	
CUSTOMER DRAWING			SCALE	SHEET	REV		
			NTS	3 OF 3	3		

PRELIMINARY

# Mouser Electronics

Authorized Distributor

Click to View Pricing, Inventory, Delivery & Lifecycle Information:

[TE Connectivity:](#)

[AVC16LS16FE1DT5B04](#)