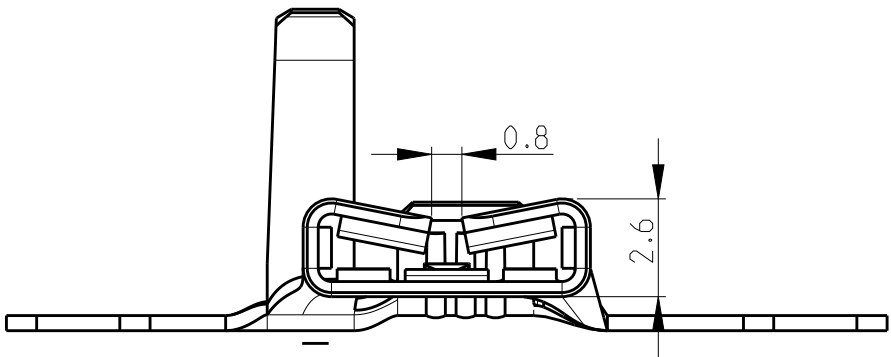
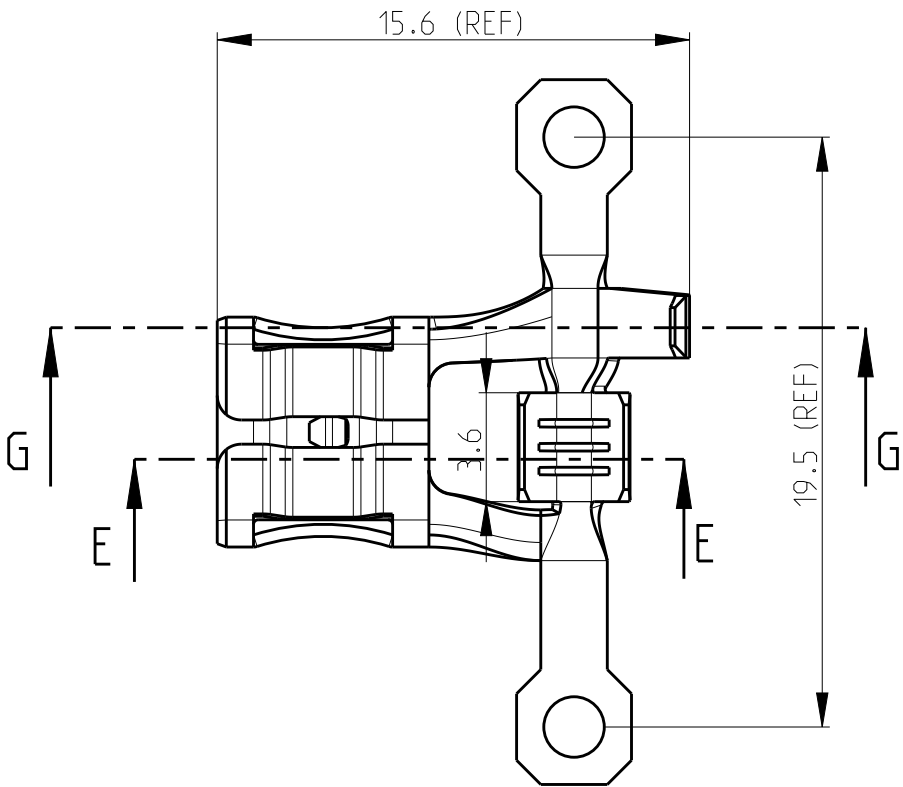


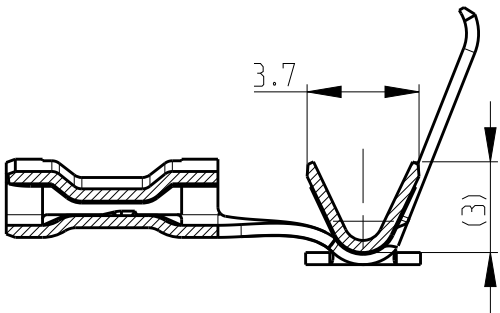
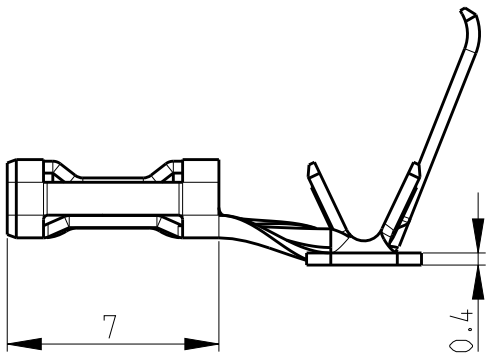
2

1

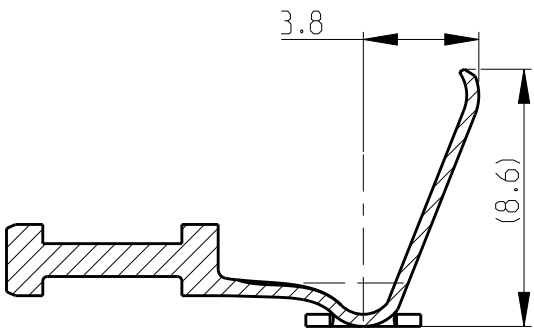
LOC —	DIST —	REVISIONS					
		P	LTR	DESCRIPTION	DATE	DWN	APVD
		A1	RELEASE PER ECR-15-004911		31MAR2015	DL	TD
		A2	RELEASE PER ECR-15-013713		21SEP2015	DL	TD
		A3	RELEASE PER ECR-16-008480		12JUN2016	HG	TD
		B	REVISED PER ECR-16-017586		18NOV2020	BDA	DL



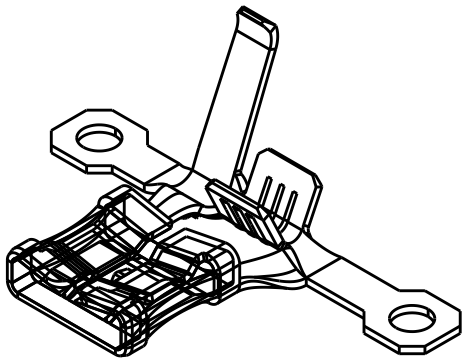
- NOTE:
1. CONTINUOUS STRIP ON REELS
 2. MATING TAB ACCORDING TO UL310 AND IEC61210 NORM. (WIDTH*THICKNESS IS 6.3*0.8 mm)
 3. WIRE SIZE IS #20-#16 AWG(0.5-1.5 sqmm)
 4. INSULATION RANGE IS Ø1.9-3.3mm
 5. CUT-OFF LENGTH 0.5 mm MAX.



SECTION E-E



SECTION G-G



Pre-NICKEL	Steel	2178423-1
FINISH	MATERIAL	PART NO.

THIS DRAWING IS A CONTROLLED DOCUMENT.		DWN VIBHUTHI 29NOV2012	<div>TE Connectivity</div>			
		CHK SUBHASH M 29NOV2012				
DIMENSIONS:		APVD SURESH T N 29NOV2012	NAME 6.3 SRS FLAG F-SPRING LIF RECEPTACLE			
mm		PRODUCT SPEC 108-64027	-			
		APPLICATION SPEC 114-64027	SIZE A3 CAGE CODE 00779 DRAWING NO C-2178423			
MATERIAL SEE TABLE		WEIGHT -	RESTRICTED TO -			
		Customer Drawing	SCALE 4:1 SHEET 1 OF 1 REV B			

Mouser Electronics

Authorized Distributor

Click to View Pricing, Inventory, Delivery & Lifecycle Information:

[TE Connectivity:](#)

[2178423-1 \(Mouser Reel\)](#) [2178423-1 \(Cut Strip\)](#)