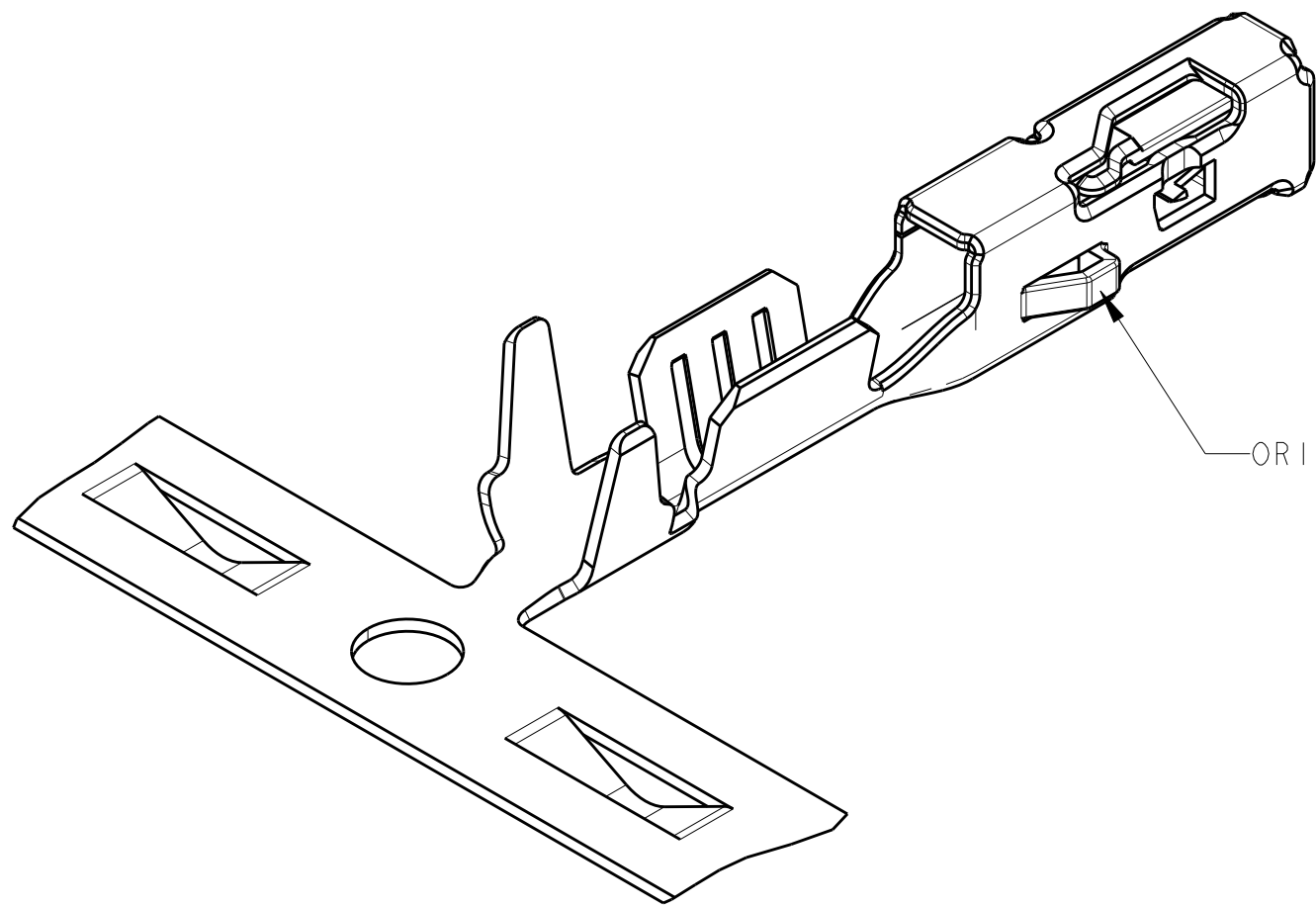
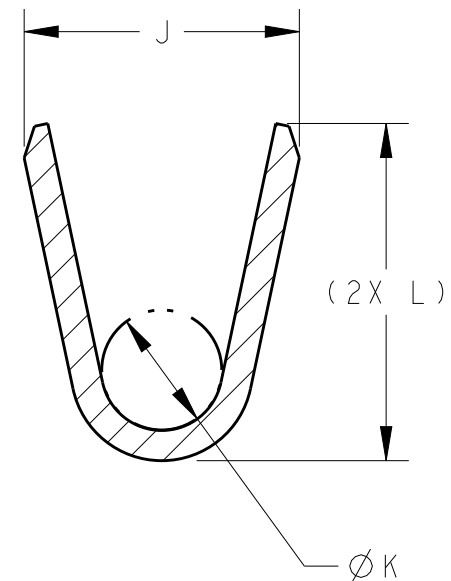
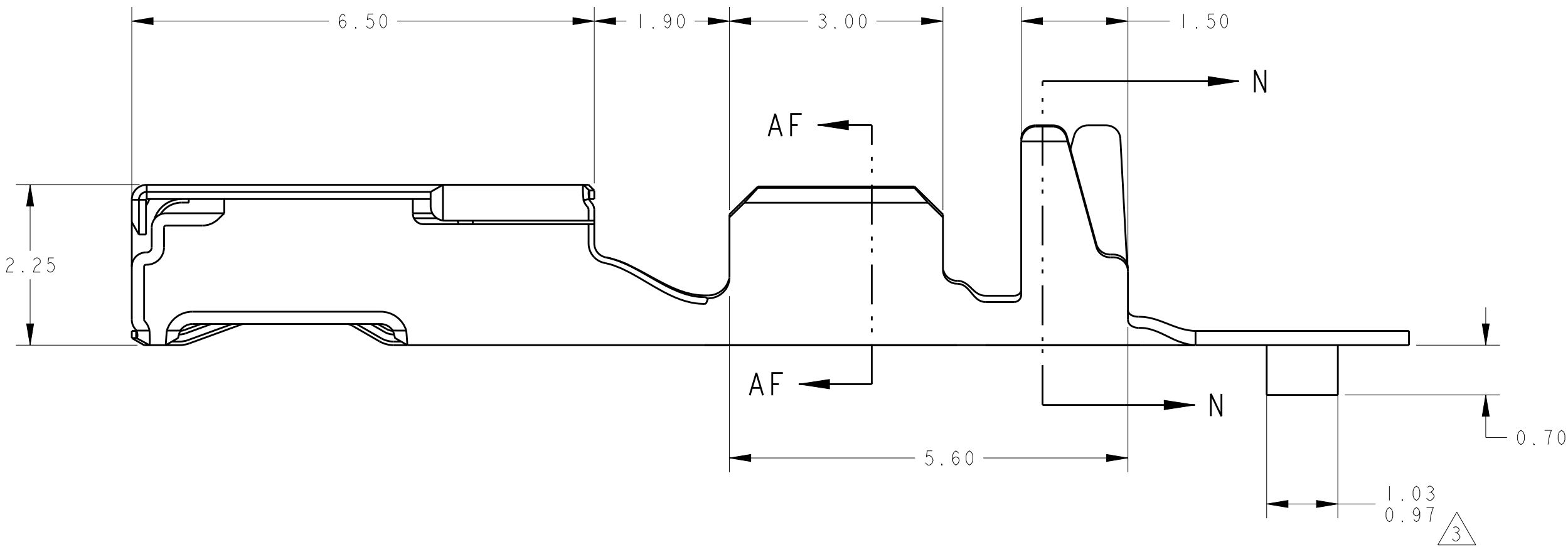
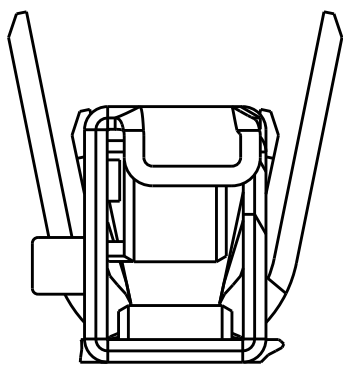
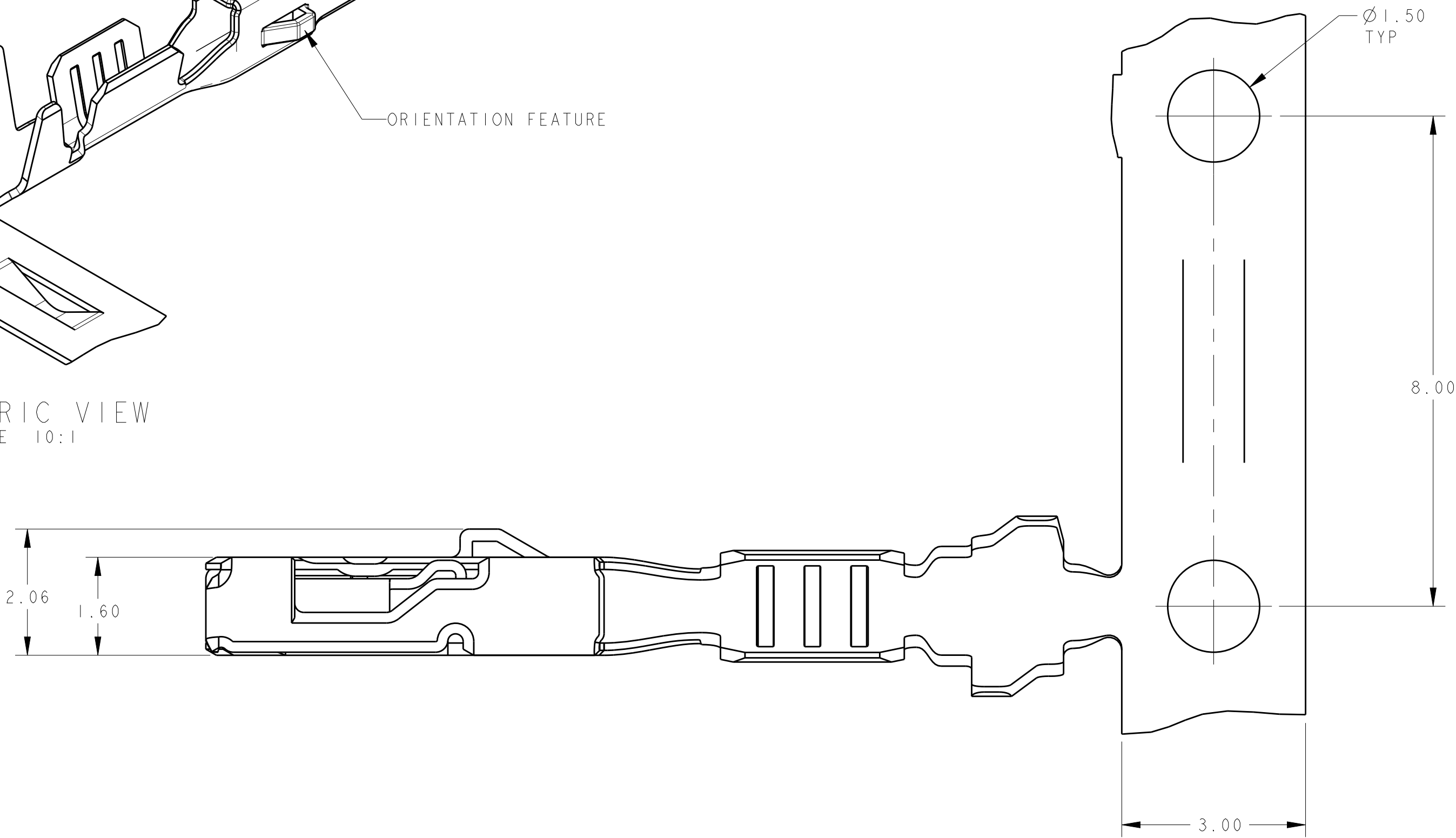


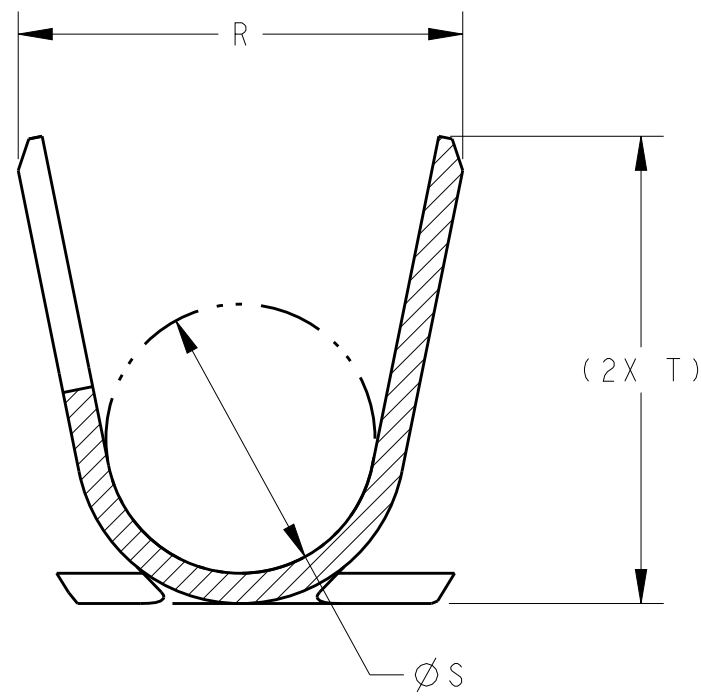
REVISIONS					
P	LTR	DESCRIPTION	DATE	DWN	APVD
	C	REVISED PER ECR-16-007232	18MAY2016	DLD	CJS



ISOMETRIC VIEW  
SCALE 10:1

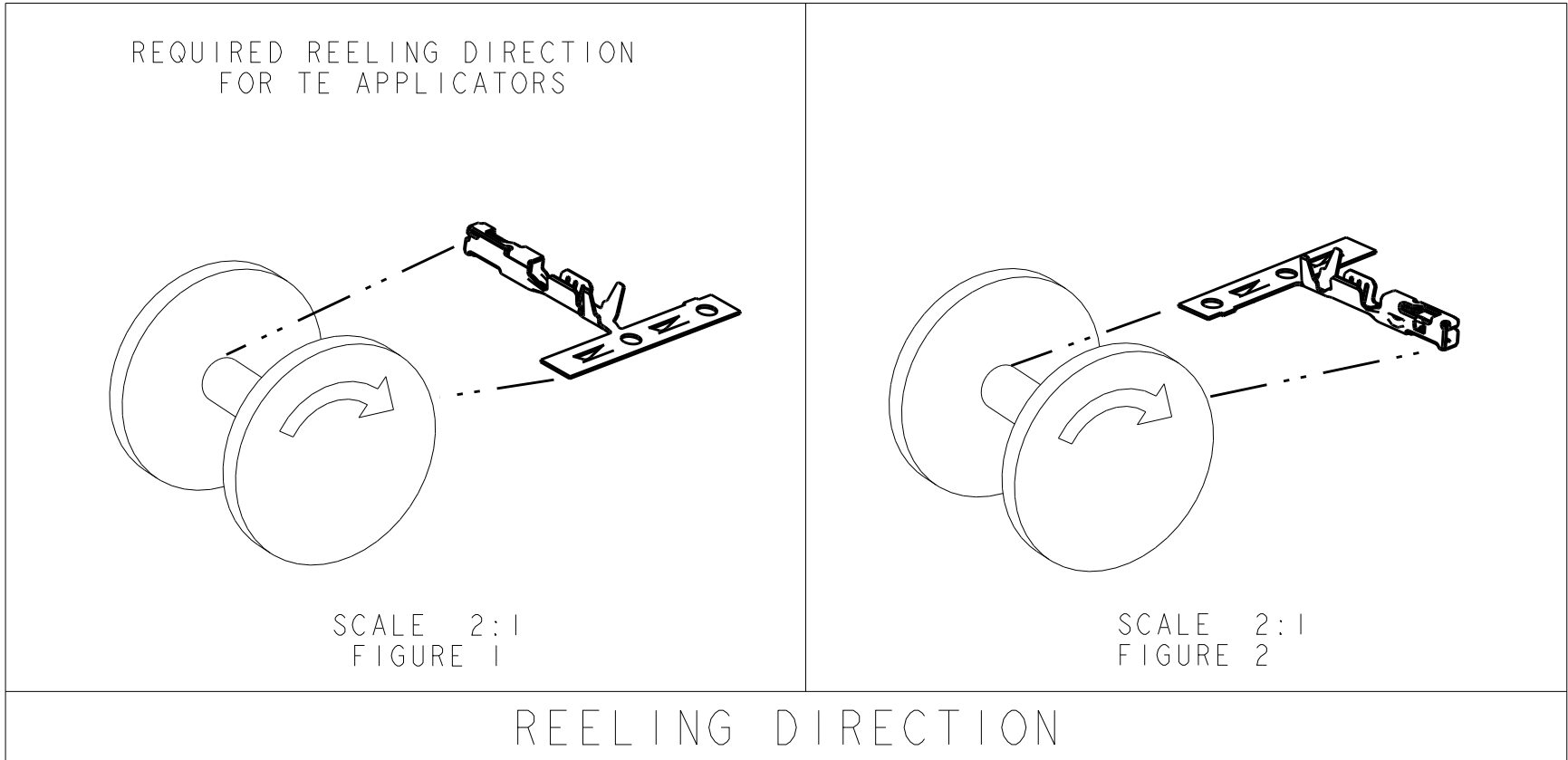


SECTION AF-AF  
SCALE 20:1






SECTION N-N  
SCALE 20:1

- 1 MATERIAL: 0.2mm THICK CuNiSi ALLOY
- 2 FINISH: PRE-PLATED WITH 1.00µm MIN BRIGHT TIN
- 3 MATERIAL ID FEATURE IN "DOWN" POSITION
4. THIS PRODUCT TO BE VALIDATED TO GMW3191, TEMP CLASS T3 AND VIBRATION CLASS VI
5. THIS PRODUCT IS DESIGNED TO BE COMPATIBLE WITH SEALED APPLICATIONS
6. NOTE DELETED
7. NORMAL FORCE 240 GRAMS REFERENCE.
8. BULGE PERMISSIBLE UNDER ORIENTATION FEATURE.
9. TERMINAL HAS NYE LUBRICANTS NYETACT 568J-50-UV PERFORMANCE LUBE/GREASE APPLIED. THIS IS A WHITISH COLORED LUBE. AMOUNT AND VISIBILITY MAY VARY.
- 10 NOT INTENDED FOR SEALED APPLICATIONS.
- 11 SEALING CAPABILITY MUST BE EVALUATED ON AN APPLICATION BASIS.



REELING DIRECTION

FIGURE 2	1.10-1.40	2.38	1.40	2.40	1.70	0.80	1.85	2	0.35	22	2035170-8	11
FIGURE 2	0.85-1.05	2.09	0.85	1.82	1.46	0.65	1.50	2	0.13	26	2035170-7	10
FIGURE 2	2.06 MAX	3.09	1.78	2.94	2.43	1.00	1.96	2	0.75	18	2035170-6	
FIGURE 2	1.50-1.85	3.09	1.78	2.94	2.23	0.80	1.82	2	0.35-0.50	20-22	2035170-5	
FIGURE 1	1.10-1.40	2.38	1.40	2.40	1.70	0.80	1.85	2	0.35	22	2035170-4	11
FIGURE 1	0.85-1.05	2.09	0.85	1.82	1.46	0.65	1.50	2	0.13	26	2035170-3	10
FIGURE 1	2.06 MAX	3.09	1.78	2.94	2.43	1.00	1.96	2	0.75	18	2035170-2	
FIGURE 1	1.50-1.85	3.09	1.78	2.94	2.23	0.80	1.82	2	0.35-0.50	20-22	2035170-1	
REELING DIRECTION	INSULATION DIAMETER	T	S	R	L	K	J	FINISH	mm <sup>2</sup>	AWG	PART NUMBER	

THIS DRAWING IS A CONTROLLED DOCUMENT.			DWN	H. MOLL	12MAR2008	 TE Connectivity						
DIMENSIONS:  mm			TOLERANCES UNLESS OTHERWISE SPECIFIED:			CHK	F. KINSEY	12MAR2008	NAME			
						APVD	C. SCHMID	27AUG2009				
			0 PLC ±			PRODUCT SPEC			CONTACT, FEMALE, 0.64mm, CuNiSi, SIDE ORIENTATION, Sn PLATE			
			1 PLC ±			APPLICATION SPEC						
			2 PLC ±0.15			114-13163						
			3 PLC ±			0.23g						
			4 PLC ±			CUSTOMER DRAWING						
ANGLES ±			FINISH			SIZE			CAGE CODE	DRAWING NO	RESTRICTED TO	
MATERIAL			-			A100779			C=2035170	-	-	
			-			SCALE			15:1	SHEET	1 OF 1	REV C

# Mouser Electronics

Authorized Distributor

Click to View Pricing, Inventory, Delivery & Lifecycle Information:

[TE Connectivity:](#)

[2035170-2](#)