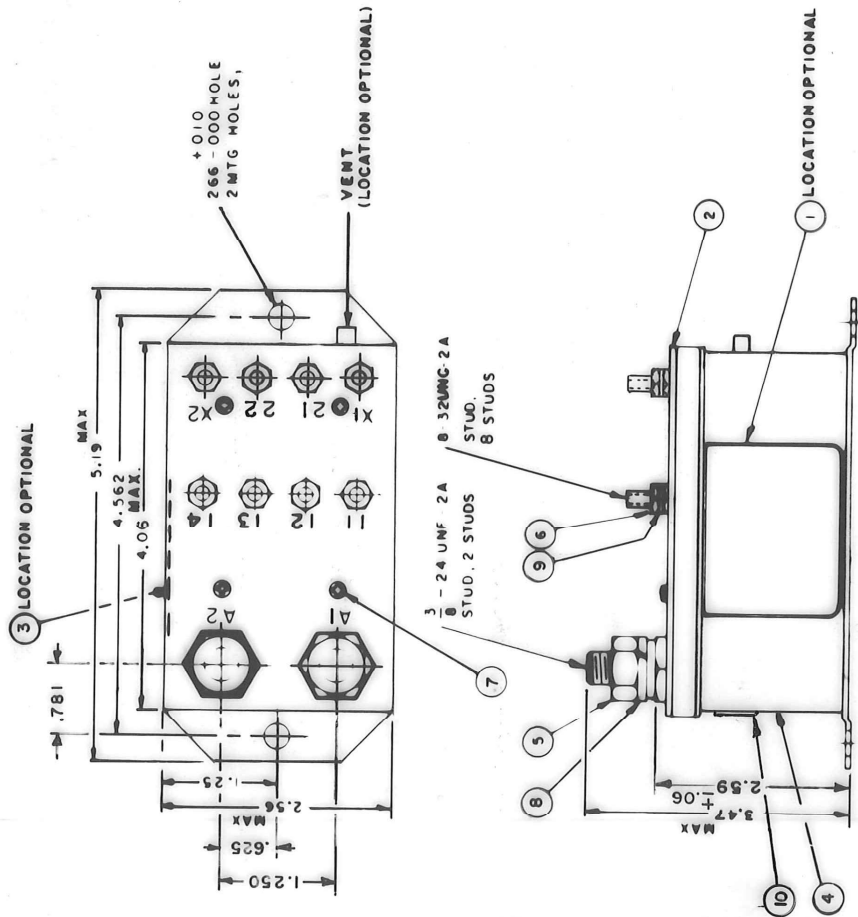


FAA/PMA

REV.	C	REVISIONS	5-4-79
SYN		DESCRIPTION	DATE
A		NOTE 3 ADDED & UPDATED PARTS LIST	5-9-79
B		16210 RE-INSTATE	4-11-63
C		20881 ITEM 10 ADDED	8-2-90



- NOTES:
1. THIS UNIT DESIGNED TO THE BASIC REQUIREMENTS OF MIL-R-6106E EXCEPT AS NOTED.
 2. QUALIFICATION TESTING NOT COMPLETED.
 3. MOUNTING SURFACE SHALL PROVIDE ELECTRICAL GROUND.

CONSTRUCTION

MAIN CONTACTS
CONFIGURATION
VOLTAGE (NOMINAL)
CURRENT:

AUXILIARY CONTACTS
11-12-13-14
21-22
VOLTAGE
CURRENT RES.
SURGE

COIL DATA

DUTY CYCLE
NOMINAL VOLTAGE
PICKUP MAX. INITIAL
PULL THROUGH
DROPOUT VOLTAGE
RESISTANCE:

ENVIRONMENTAL DATA

AMBIENT TEMP
LIFE ELECTRICAL
LIFE MECHANICAL
WEIGHT MAX. (EST.)

GASKET SEALED (VENTED)

SPST N.O.
28 VDC
4.00 AMP
1000 AMP FOR 30 SEC
1500 AMP INRUSH

FORM Z OPERATE BEFORE MAINS CLOSE
SPST - N.O.
28 VDC
5 AMP, 10 AMP CARRY ONLY
30 AMP CARRY ONLY FOR 0.1 SEC.

INTERMITTANT

24-30 VDC
12 VDC
6 VDC MAX AT 25°C
.5-5 V
14 OHM ± 20% AT 25°C

-55°C TO +71°C

50,000 CYCLES MIN.
100,000 CYCLES
2 LBS. 2 OZ.

QTY	RECD	NOMENCLATURE OR DESCRIPTION	PART OR IDENTIFYING NO	ITEM NO
1		PLATE - FAA/PMA	58400-081	10
8		WASHER LOCK - 8 X .307 X .047 SPL. BRZ.	51808-064 (AN935B8)	9
2		WASHER LOCK - 3/8 X .688 X .094 SPL. BRZ.	51807-084 (AN935B616)	8
4		SCREW - #4 X 1/4 S.S. SHEET METAL	51200-020	7
8		NUT - 8-32 X 5/16 X 3/32 HEX. BRASS	50408-034	6
2		NUT - 3/8-24 X 5/8 X 7/32 HEX. BRASS	50407-164 (AN341-616)	5
1		CONTACTOR ASSEMBLY - PRIMARY	33286-010	4
1		PLATE - WIRING DIAGRAM	35700-001	3
1		PLATE - BASE COVER	33266-006	2
1		PLATE - NAME	16043-001	1

PARTS LIST

DATE 12-7-78 DR BY H.A.S.

DESIGNED FOR

TOLERANCES

UNLESS OTHERWISE SPECIFIED
.00 ± .05 .000 ± .01

MATERIAL

K S R

400 AMP, 28 VOLTS

APPROVED

RS

74063

C

SCALE NONE WEIGHT

SHEET

A-703FB

BARTMAN ELECTRICAL MANUFACTURING

DIV. OF A-T-O

Mouser Electronics

Authorized Distributor

Click to View Pricing, Inventory, Delivery & Lifecycle Information:

[TE Connectivity:](#)

[1-1616058-3](#)