

REVISIONS					
P	LTR	DESCRIPTION	DATE	DWN	APVD
	B5	REVISED PER ECO-16-018096	23MAY2017	RK	PO

SPECIFICATIONS:

BREAK-BEFORE-MAKE

MATERIAL:

SLIDER, GLASS FILLED NYLON, UL94-HB, BLACK.
BASE, GLASS FILLED PBT, BLUE.
COVER, GLASSSED FILLED PBT, BLUE.
SLIDE PLATE, STAINLESS STEEL.
ACTUATOR, PPS, BLACK.
ROCKER CONTACT(GOLD), COPPER ALLOY, GOLD OVER NICKEL PLATING.
ROCKER CONTACT(SILVER), COPPER ALLOY PLUS COINED SILVER.
FIXED CONTACT/TERMINAL (GOLD), COPPER ALLOY, GOLD OVER NICKEL PLATE.
FIXED CONTACT/TERMINAL(SILVER), COPPER ALLOY PLUS COINED SILVER, GOLD OVER NICKEL PLATE.

ELECTRICAL:

CONTACT RATING(SILVER)- 3A@115V AC OR 1.5A@230V AC
CONTACT RATING(GOLD)- .4VA MAX@20V DC OR PEAK AC
INITIAL CONTACT RESISTANCE - 20 MILLIOHMS MAX.
INSULATION RESISTANCE- 1000 MEGOHMS MIN @ 500V DC
DIELECTRIC STRENGTH- 500 V RMS@SEA LEVEL.
LIFE EXPECTANCY- 30,000 OPERATIONS.

MECHANICAL:



OPERATING FORCE- 600±300 GRAMS.
TRAVEL-.120

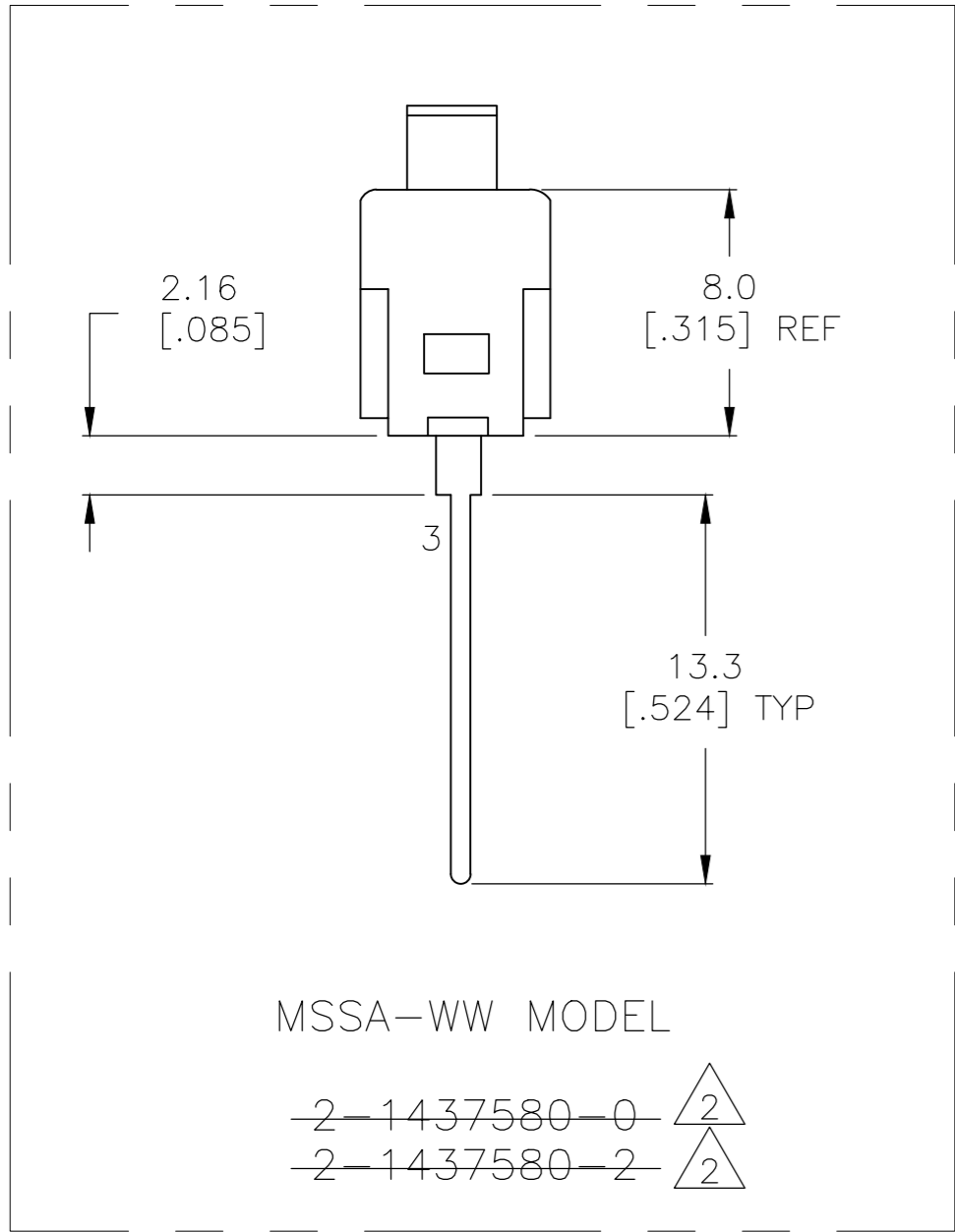
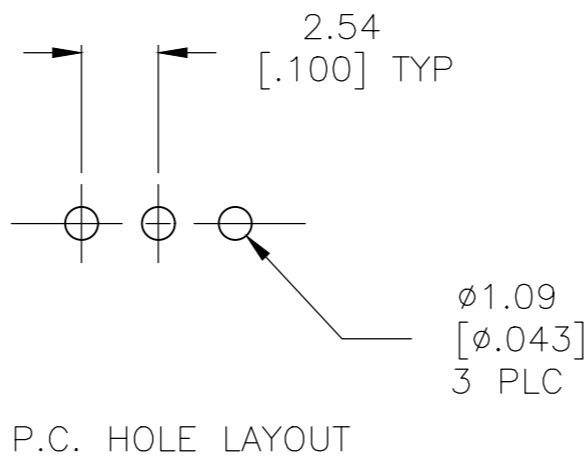
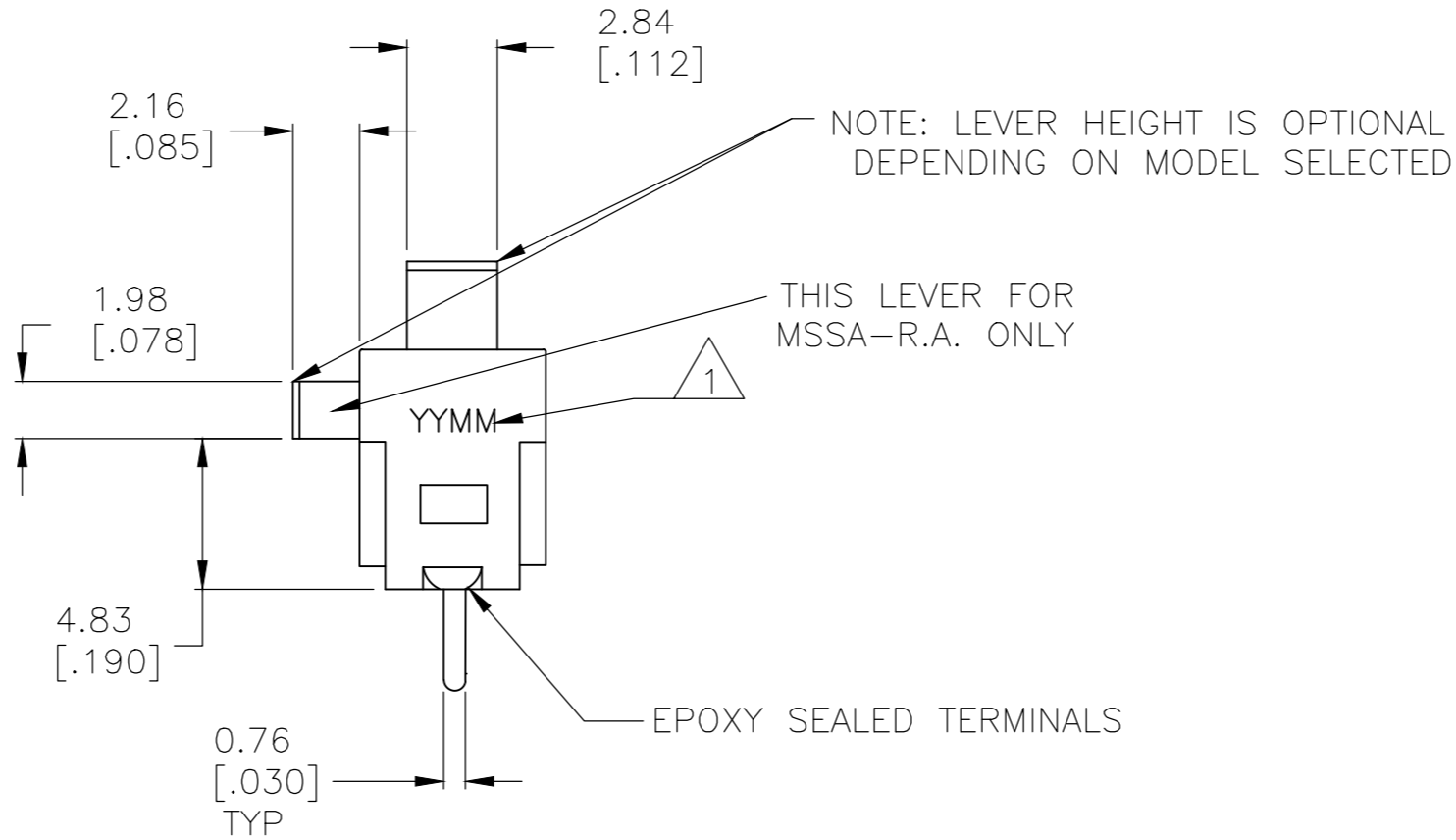
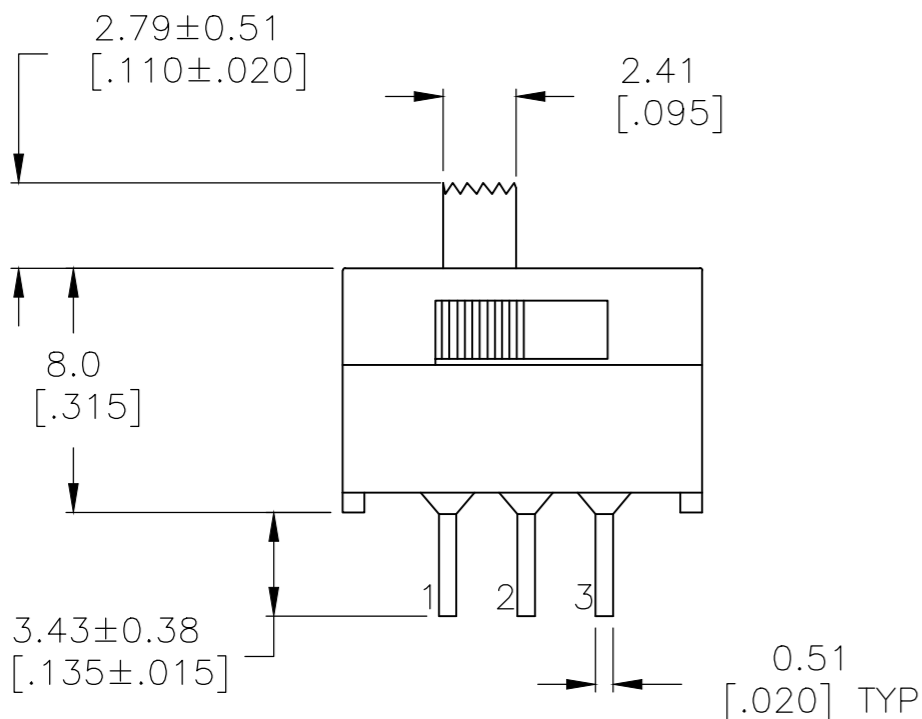
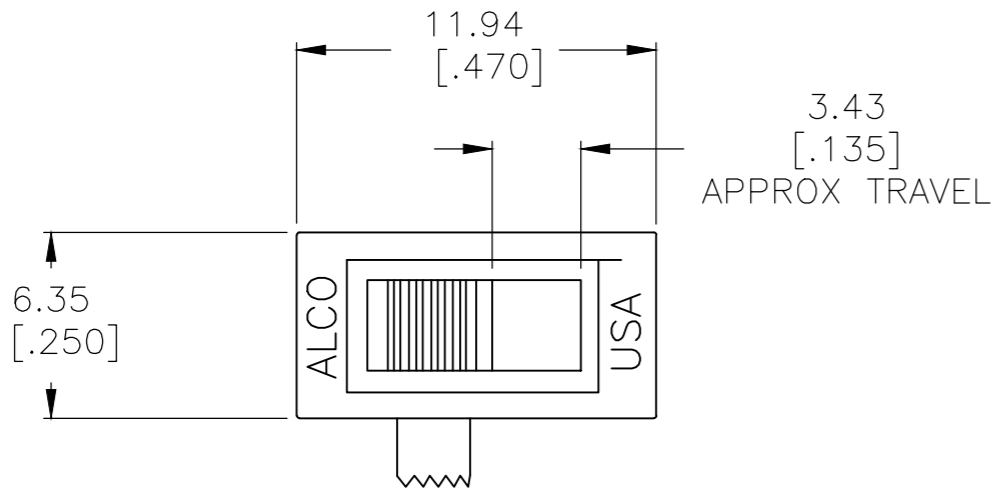
ENVIRONMENTAL:

OPERATING TEMPERATURE- -20°C TO +65°C
STORAGE TEMPERATURE- -40°C TO +100°C
SOLDER HEAT RESISTANCE- PER 109-202, CONDITION B.
SOLDERABILITY PER EIA 364-52, CLASS 2, CATAGORY 1.

- 1
- DATE CODE MARKING YYMM (YEAR, MONTH).
- 2
- OBSOLETE.

2,1	OFF	2,3	SILVER	MSSA104E	2-1437580-6
2,1	NONE	2,3	SILVER	MSSA104DRA	2-1437580-5
2,1	NONE	2,3	SILVER	MSSA104D1	2-1437580-4
2,1	NONE	2,3	SILVER	MSSA104D	2-1437580-3
2,1	OFF	2,3	GOLD	MSSA101EGWW	2-1437580-2
2,1	OFF	2,3	GOLD	MSSA101EGRA	2-1437580-1
2,1	NONE	2,3	GOLD	MSSA101DGWW	2-1437580-0
2,1	NONE	2,3	GOLD	MSSA101DGRA	1-1437580-9
2,1	NONE	2,3	GOLD	MSSA101DG1	1-1437580-8
2,1	NONE	2,3	GOLD	MSSA101DG	1-1437580-7
1 2 3		1 2 3		1 2 3	
PLATING			ALCO PART NO.		PART NO.

THIS DRAWING IS A CONTROLLED DOCUMENT.		DWN ROBERT.J.WINGROVE CHK — —	23DEC80 30DEC80	 TE Connectivity	
DIMENSIONS: mm [INCHES]	TOLERANCES UNLESS OTHERWISE SPECIFIED:	APVD — —	05JAN81	NAME — SLIDE SWITCH SP & SPRA —	
	0 PLC ± —	PRODUCT SPEC —	SIZE A2		
	1 PLC ± —	APPLICATION SPEC —			
	2 PLC ± —	—			
	3 PLC ± 0.25[.010]	—			
	4 PLC ± —	—			
MATERIAL —	FINISH —	WEIGHT	CAGE CODE 00779	DRAWING NO C-1-1437580-7	RESTRICTED TO —
CUSTOMER DRAWING			SCALE 4:1	SHEET 1 of 1	REV B5



MSSA-WW MODEL

2-1437580-0
2-1437580-2

Mouser Electronics

Authorized Distributor

Click to View Pricing, Inventory, Delivery & Lifecycle Information:

[TE Connectivity:](#)

[MSSA104D](#)