

REVISIONS					
P	LTR	DESCRIPTION	DATE	DWN	APVD
	B5	REVISED PER ECO-16-018096	23MAY2017	RK	PO

SPECIFICATIONS:

BREAK-BEFORE-MAKE

MATERIAL:

SLIDER, GLASS FILLED NYLON, UL94-HB, BLACK.
BASE, GLASS FILLED PBT, BLUE.
COVER, GLASSSED FILLED PBT, BLUE.
SLIDE PLATE, STAINLESS STEEL.
ACTUATOR, PPS, BLACK.
ROCKER CONTACT(GOLD), COPPER ALLOY, GOLD OVER NICKEL PLATING.
ROCKER CONTACT(SILVER), COPPER ALLOY PLUS COINED SILVER.
FIXED CONTACT/TERMINAL (GOLD), COPPER ALLOY, GOLD OVER NICKEL PLATE.
FIXED CONTACT/TERMINAL(SILVER), COPPER ALLOY PLUS COINED SILVER, GOLD OVER NICKEL PLATE.

ELECTRICAL:

CONTACT RATING(SILVER)- 3A@115V AC OR 1.5A@230V AC
CONTACT RATING(GOLD)- .4VA MAX@20V DC OR PEAK AC
INITIAL CONTACT RESISTANCE - 20 MILLIOHMS MAX.
INSULATION RESISTANCE- 1000 MEGOHMS MIN @ 500V DC
DIELECTRIC STRENGTH- 500 V RMS@SEA LEVEL.
LIFE EXPECTANCY- 30,000 OPERATIONS.

MECHANICAL:

OPERATING FORCE- 600±300 GRAMS.
TRAVEL-.120

ENVIRONMENTAL:

OPERATING TEMPERATURE- -20°C TO +65°C
STORAGE TEMPERATURE- -40°C TO +100°C
SOLDER HEAT RESISTANCE- PER 109-202, CONDITION B.
SOLDERABILITY PER EIA 364-52, CLASS 2, CATAGORY 1.

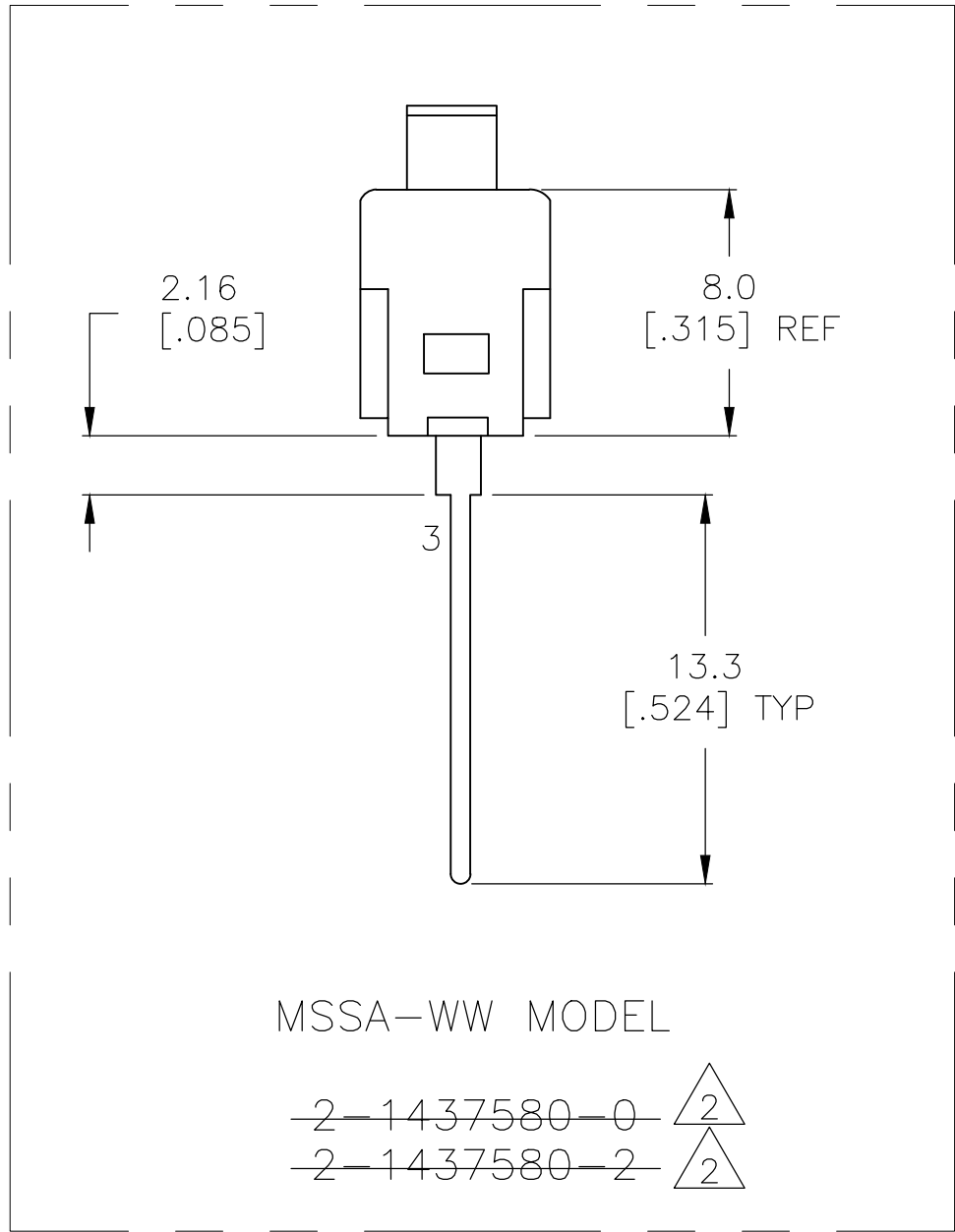
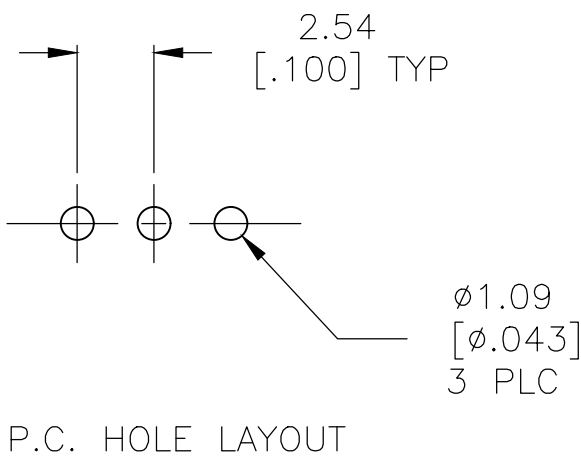
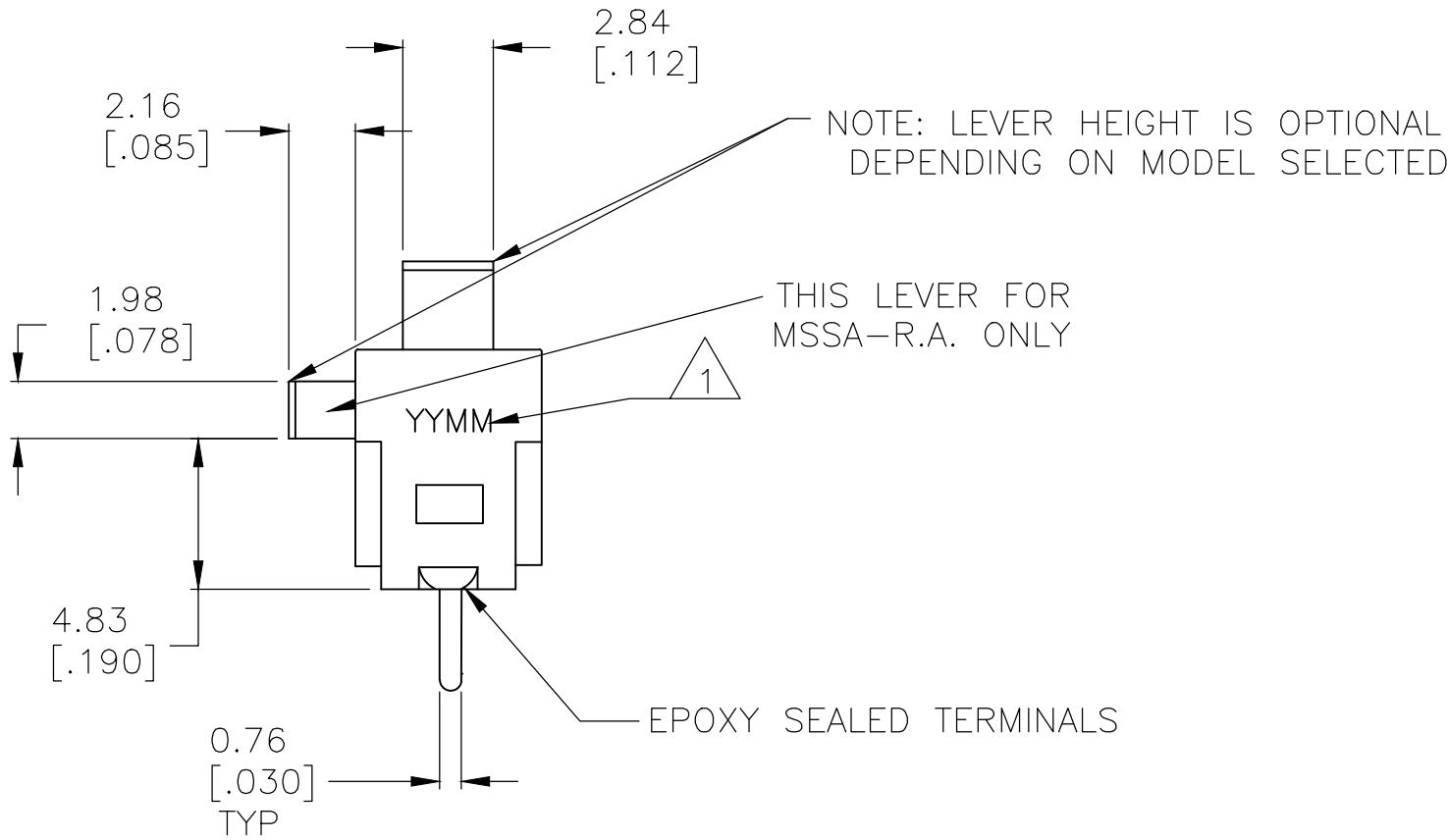
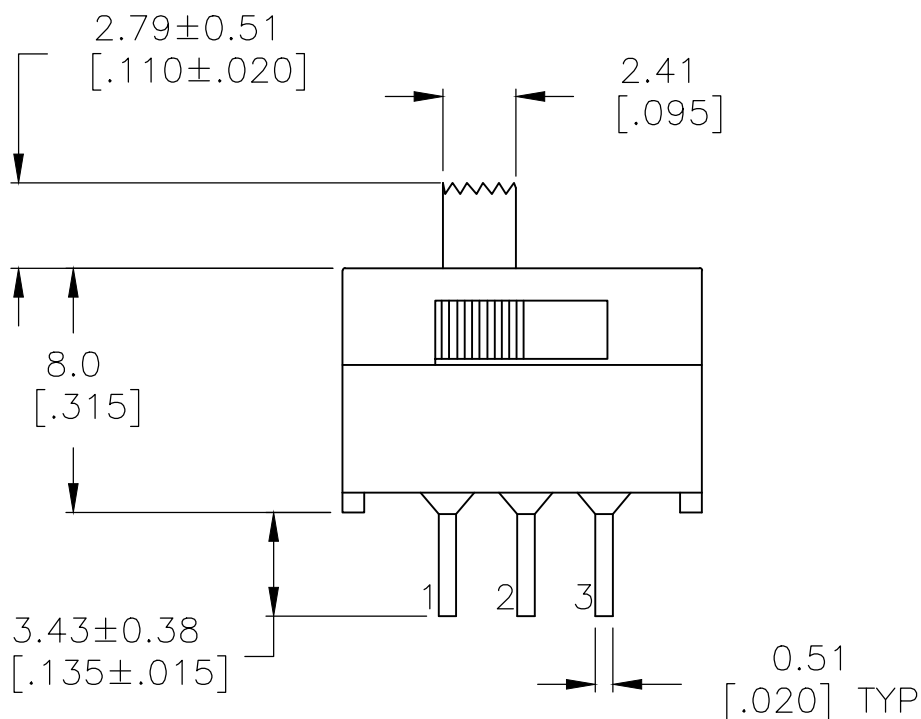
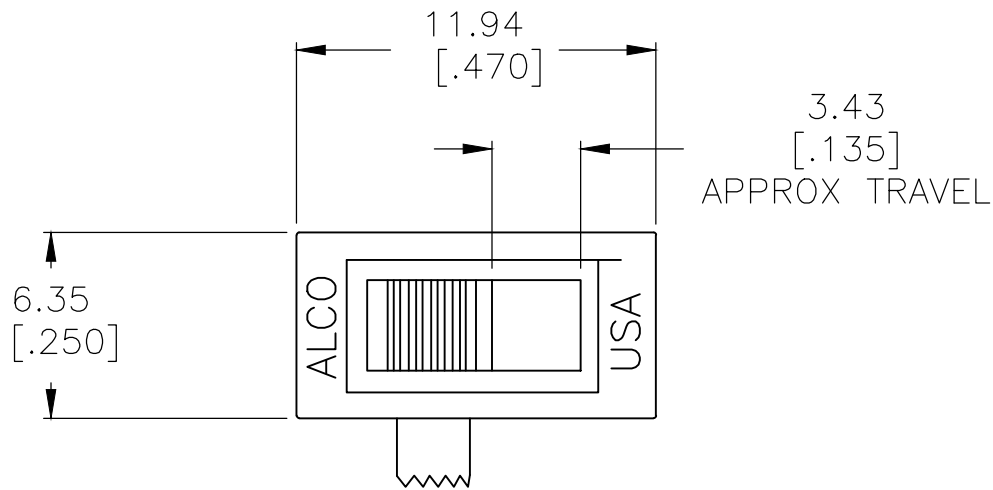
- 1

DATE CODE MARKING YYMM (YEAR, MONTH).
- 2

OBSOLETE.

<div>2,1</div>	OFF	<div>2,3</div>	SILVER	MSSA104E	2-1437580-6
<div>2,1</div>	NONE	<div>2,3</div>	SILVER	MSSA104DRA	2-1437580-5
<div>2,1</div>	NONE	<div>2,3</div>	SILVER	MSSA104D1	2-1437580-4
<div>2,1</div>	NONE	<div>2,3</div>	SILVER	MSSA104D	2-1437580-3
<div>2,1</div>	OFF	<div>2,3</div>	GOLD	MSSA101EGWW	2-1437580-2
<div>2,1</div>	OFF	<div>2,3</div>	GOLD	MSSA101EGRA	2-1437580-1
<div>2,1</div>	NONE	<div>2,3</div>	GOLD	MSSA101DCWW	2-1437580-0
<div>2,1</div>	NONE	<div>2,3</div>	GOLD	MSSA101DGRA	1-1437580-9
<div>2,1</div>	NONE	<div>2,3</div>	GOLD	MSSA101DG1	1-1437580-8
<div>2,1</div>	NONE	<div>2,3</div>	GOLD	MSSA101DG	1-1437580-7
<div>1 2 3</div>		<div>1 2 3</div>	<div>1 2 3</div>	PLATING	
				ALCO PART NO.	PART NO.

THIS DRAWING IS A CONTROLLED DOCUMENT.		DWN ROBERT.J.WINGROVE	23DEC80	<div><div>TE</div>TE Connectivity</div>	
		CHK -	30DEC80		
DIMENSIONS: mm [INCHES]	TOLERANCES UNLESS OTHERWISE SPECIFIED:	APVD -	05JAN81	NAME	
		PRODUCT SPEC		SLIDE SWITCH SP & SPRA	
<div><div></div></div>	0 PLC ± - 1 PLC ± - 2 PLC ± - 3 PLC ± 0.25[.010] 4 PLC ± - ANGLES ± -	APPLICATION SPEC		-	
		WEIGHT		-	
MATERIAL -	FINISH -	CUSTOMER DRAWING		SIZE A2	RESTRICTED TO -
		SCALE 4:1		SHEET 1 OF 1	REV B5



MSSA-WW MODEL

~~2-1437580-0~~
~~2-1437580-2~~

Mouser Electronics

Authorized Distributor

Click to View Pricing, Inventory, Delivery & Lifecycle Information:

[TE Connectivity:](#)

[MSSA101DGRA](#)