

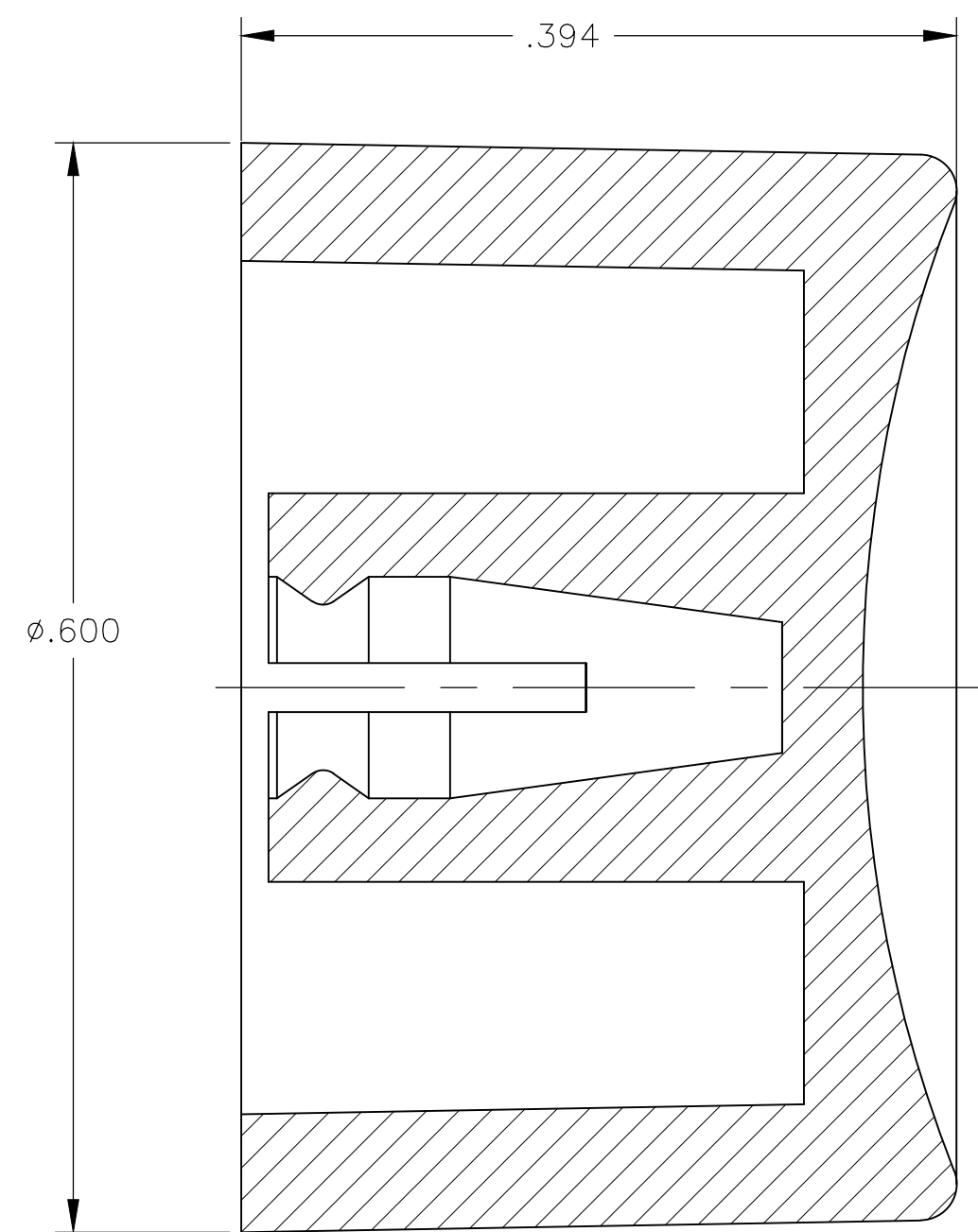
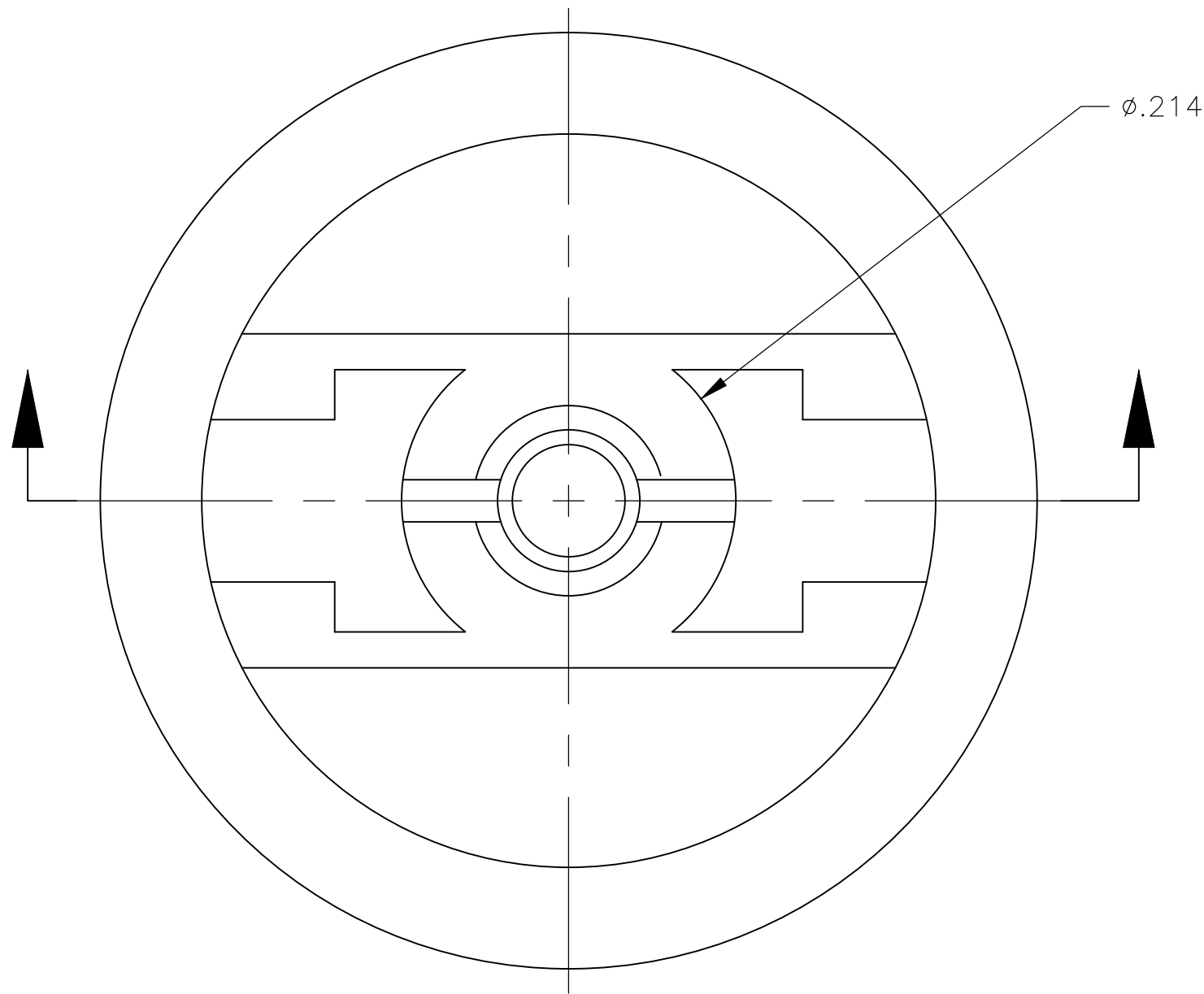
REVISIONS					
P	LTR	DESCRIPTION	DATE	DWN	APVD
	A2	ECR-16-017266	01JUN2018	SR	PO

D

C

B

A



D



C

B

A

- 1
- MATERIAL SHALL COMPLY WITH EU DIRECTIVE 2002/95/EC OF 20JAN2003 (ROHS)
- 2
- CAP FOR USE WITH GREEN SERIES PUSHBUTTON SWITCHES AS SHOWN ON DRAWINGS 4-1437567-3 AND 2-1437567-9

OBSOLETE	WHITE	C23904	1825069-7
	BLUE	C23604	1825069-6
OBSOLETE	GREEN	C23504	1825069-5
	YELLOW	C23404	1825069-4
	ORANGE	C23304	1825069-3
	RED	C23204	1825069-2
	BLACK	C23004	1825069-1
	COLOR	ALCO PART NUMBER	TE PART NUMBER

THIS DRAWING IS A CONTROLLED DOCUMENT.			DWN M.BINNER 30NOV04		 TE Connectivity Ltd.				
			CHK M.ZITTO 30NOV04						
DIMENSIONS: INCHES		TOLERANCES UNLESS OTHERWISE SPECIFIED:		APVD M.ZITTO 30NOV04		NAME			
		0 PLC ± -		PRODUCT SPEC		CAP, GREEN SERIES, PUSHBUTTON, C23			
		1 PLC ± -		—					
		2 PLC ± -		APPLICATION SPEC					
		3 PLC ± .003		—					
4 PLC ± -		ANGLES ± 1°		WEIGHT		SIZE	CAGE CODE	DRAWING NO	RESTRICTED TO
MATERIAL POLYAMIDE		FINISH —		A2		00779		C-1825069	
CUSTOMER DRAWING						SCALE	10:1	SHEET	1 of 1
						REV	A2		

1825069

# Mouser Electronics

Authorized Distributor

Click to View Pricing, Inventory, Delivery & Lifecycle Information:

[TE Connectivity:](#)

[C23004](#)