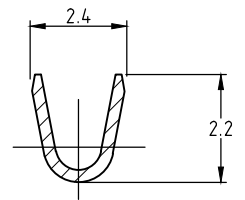
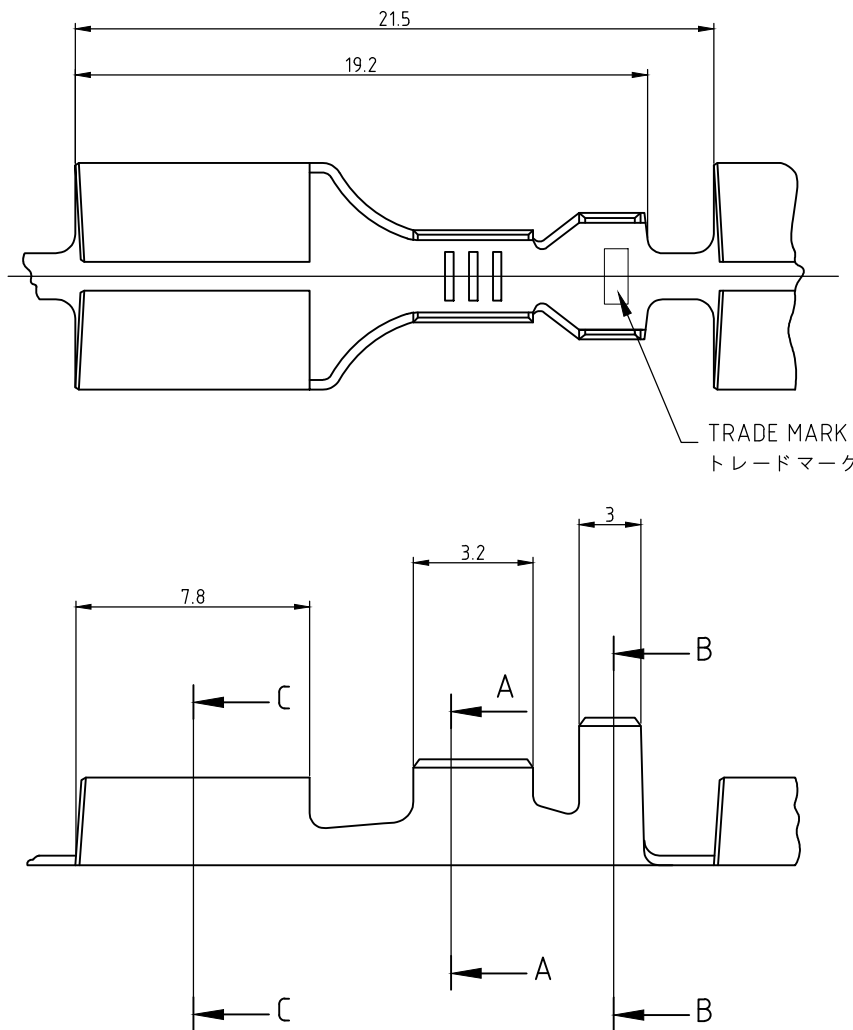
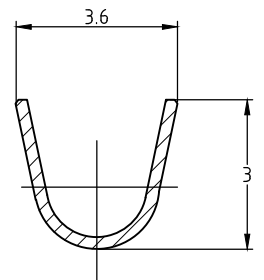
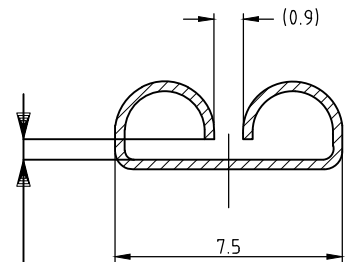


## REVISIONS

P	LTR	DESCRIPTION	DATE	DWN	APVD
	B2	REVISED PER ECR-19-019198	13JAN2020	BH	E.W

SECT.  
断面 A-ASECT.  
断面 B-B

この寸法はかん合力によって規定する。  
THIS DIMENSION IS CONTROLLED WITH MATING FORCE

SECT.  
断面 C-C

## NOTE;

- STRESS RELIEVING  
FINISH IS SUBJECT TO CHANGE BY THE TYPE OF STRESS RELIVING PROCESS  
INERT GAS FURNACE - - - -MATTE  
ATMOSPHERIC FURNACE FOLLOWED BY ACID PICKLE - - - -BRIGHT
- CONTACT INSERTION FORCE : 39.2N MAX.  
CONTACT EXTRACTION FORCE : 4.9 - 39.2N
- APPLICATION FEED : 21.49mm

TIN PLATING 錫めっき	BRASS THICKNESS 黄銅 板厚 0.32	170384-2
— //	BRASS THICKNESS 黄銅 板厚 0.32	170384-1
FINISH 仕上	MATERIAL 材質	PART NO. 型番

WIRE RANGE 総合電線断面積 0.3~0.5mm <sup>2</sup> (AWG#22-20)	INSULATION DIA 被覆外径 1.5~2.2mmφ
--	-----------------------------------

DIMENSIONS:  
単位: 耗  
mm

DWN J.SATO 17MAY2007

MATERIAL  
材料

SEE TABLE

FINISH  
仕上

SEE TABLE

CHK S.MANABE 17MAY2007

APVD S.MANABE 17MAY2007

PRODUCT SPEC  
製品規格

APPLICATION SPEC  
取付適用規格

WEIGHT

0.000000

NAME  
名称

.250 SERIES RECEPTACLE WITHOUT LATCH

SIZE

CAGE CODE

DRAWING NO  
番号

RESTRICTED TO

A4

00779

C-170384

—

CUSTOMER DRAWING

SCALE  
尺度 4:1

SHEET 1 OF 1

REV B2

THIS DRAWING IS UNPUBLISHED.

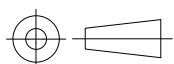
ALL RIGHTS RESERVED.

COPYRIGHT - By -



TOLERANCES UNLESS  
OTHERWISE SPECIFIED:  
一般公差

10以下 ± 0.2  
1 PLC ±  
10以下 ± 0.25  
3 PLC ±  
10以下 ± 0.3  
ANGLES ± 3°



# Mouser Electronics

Authorized Distributor

Click to View Pricing, Inventory, Delivery & Lifecycle Information:

[TE Connectivity:](#)

[170384-1 \(Loose Piece\)](#) [170384-1 \(Cut Strip\)](#)