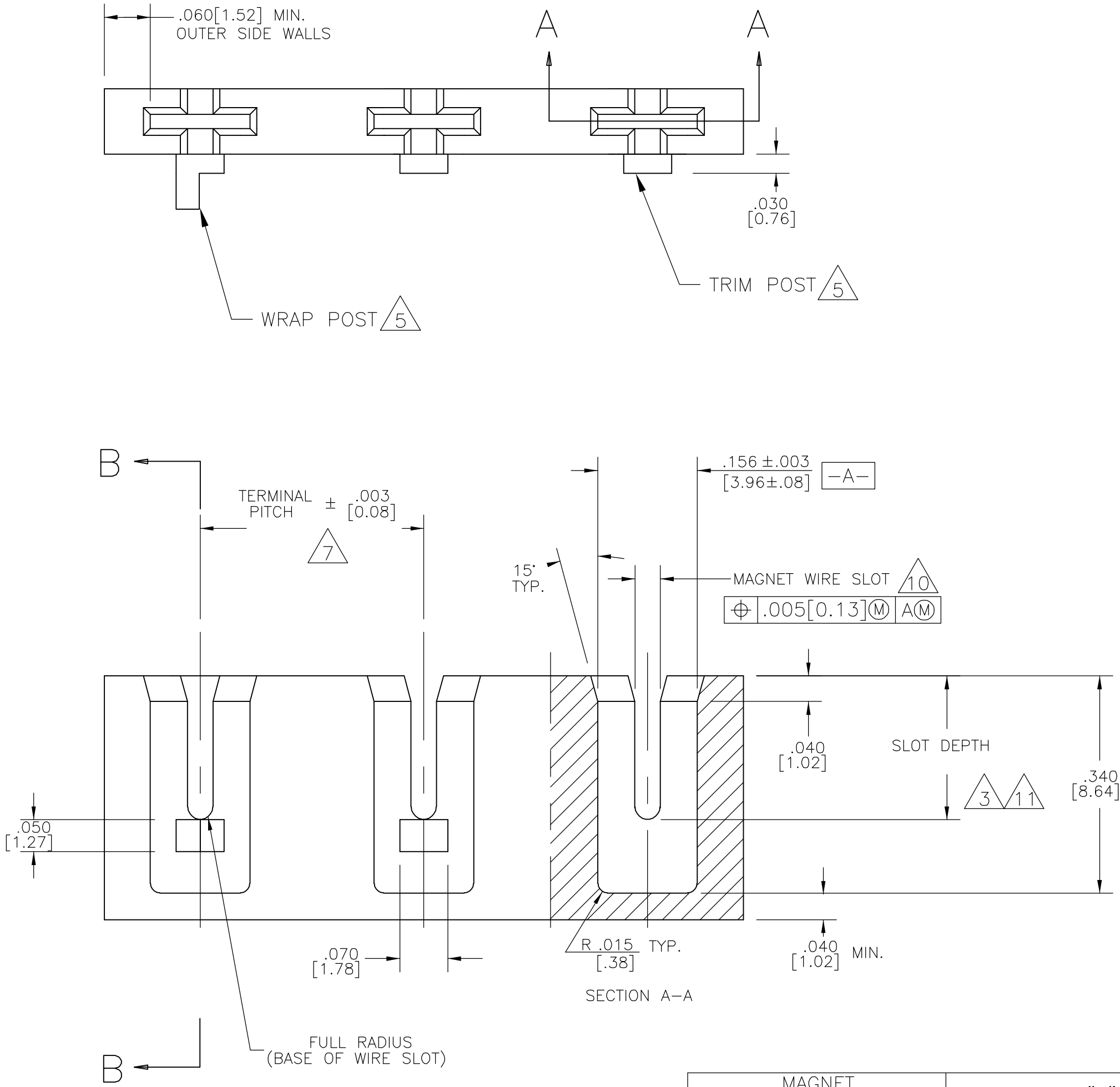
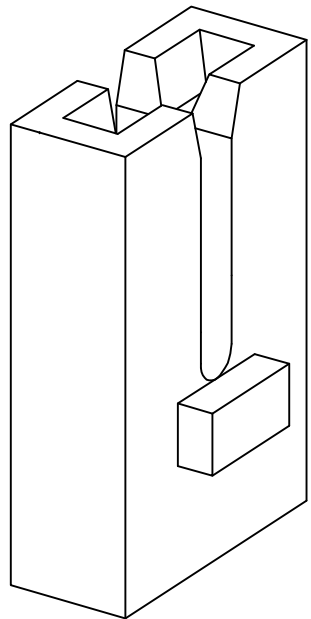
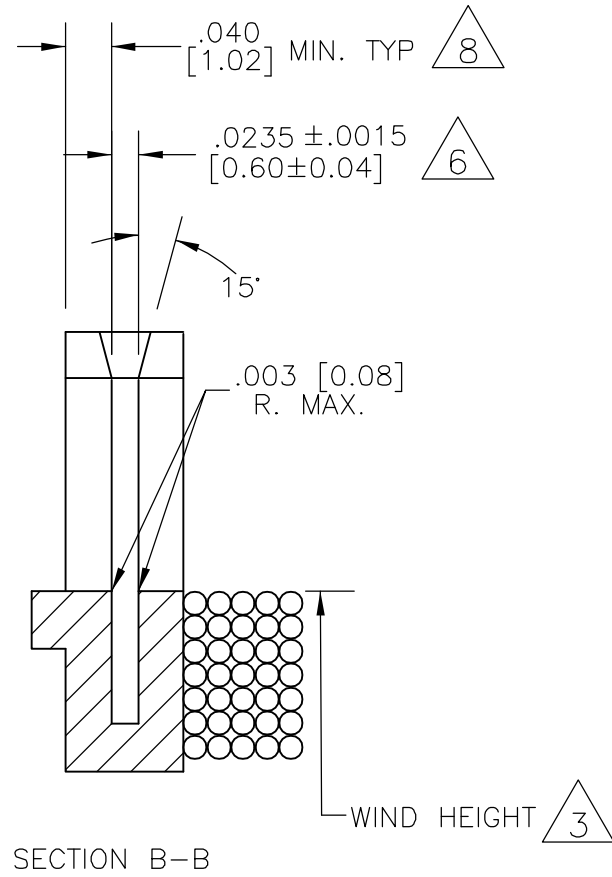


| LOC | DIST | REVISIONS |     |                           |         |      |
|-----|------|-----------|-----|---------------------------|---------|------|
| AF  | 50   | P         | LTR | DESCRIPTION               | DATE    | APVD |
|     |      |           | B   | REVISED PER ECR-07-006768 | 05APR07 | GJ   |

- 1
- DIMENSIONS SPECIFIED MAY VARY PER CUSTOMER APPLICATION, DO NOT TOOL WITHOUT TYCO ELECTRONICS REVIEW AND APPROVAL.
- 2
- TYCO ELECTRONICS REQUIRES THE FOLLOWING INFORMATION IN ORDER TO APPROVE THE CUSTOMERS APPLICATION DRAWINGS, WIRE RANGE AND INSULATION THICKNESS.
- 3
- MAGNET WIRE COIL MUST NOT EXCEED HEIGHT OF MAGNET WIRE SLOT AS SHOWN UNLESS PROVISIONS ARE MADE TO KEEP "FINISH" WIRE FLAT AGAINST BASE OF WIRE SLOT.
- 4
- MATERIAL RECOMMENDED: NYLON 6/6 AND NYLON 6/6 30% GLASS FILLED. OTHER MATERIALS ARE ACCEPTABLE HOWEVER, CONSULT TYCO ELECTRONICS FOR SPECIFICATIONS.
- 5
- 30 AWG. (ø .01 [0.26]) WIRE AND FINER REQUIRES WIRE WRAP POST INSTEAD OF TRIM POST. SEE SPEC. DRW. #1601447.
- 6
- MUST MAINTAIN SLOT THICKNESS (.0235) [0.60] INCLUDING DRAFT ANGLE FROM BOTTOM OF POCKET TO .015[0.38] MINIMUM ABOVE BASE OF WIRE SLOT. (.028[0.71] MAX.THICKNESS AT TOP).
- 7
- WHENEVER POSSIBLE, POCKET PITCH TO MATCH TERMINAL PITCH. MINIMUM PITCH TO BE .197 [5.00].
- 8
- .060 [1.52] MIN. WALL THICKNESS RECOMMENDED ON TRIM POST SIDE WHEN WIRE TRIMMING IS REQUIRED.
- 9
- FOR BUSSED TAB SIAMEZE TERMINALS A BUSSED TAB POCKET PER DRAWING #1601426 MAY BE REQUIRED. CUSTOMER SHOULD CONSULT TYCO ELECTRONICS FOR EACH PARTICULAR APPLICATION.
- 10
- SIZE THIS SLOT FOR LARGEST WIRE DIA. CONSULT MOLD VENDOR IF SMALLER THAN .020 [0.51] IS TO BE SPECIFIED.
- 11
- REFER TO TABLE. CONSULT TYCO ELECTRONICS IF WIRE SIZE TO BE USED, OVERLAP THE RANGES SHOWN.
- 12
- SLOT DEPTH DIMENSIONS ARE FOR CONNECTING ONE MAGNET WIRE WITH A MOVING BEAM SIAMEZE CONTACT. CONSULT TYCO ELECTRONICS FOR BIFILAR (2 WIRE) CONNECTIONS.



| MAGNET WIRE SIZE<br>AWG [mm DIA] | SLOT DEPTH "X"<br>±.003 [±0.08] |
|----------------------------------|---------------------------------|
| #18-#21.5 [1.02-0.69]            | .245 [6.22]                     |
| #22-#25.5 [0.65-0.43]            | .233 [5.92]                     |
| #26-#29.5 [0.41-0.27]            | .225 [5.72]                     |
| #30-#33.5 [0.25-0.17]            | .220 [5.59]                     |
| #34-#36 [0.16-0.13]              | .217 [5.51]                     |

THIS DRAWING IS A CONTROLLED DOCUMENT.

DIMENSIONS:  
INCHES

MATERIAL

4

TOLERANCES UNLESS OTHERWISE SPECIFIED:

0 PLC ± -

1 PLC ± -

2 PLC ± .01 [0.25]

3 PLC ± .005 [0.13]

4 PLC ± .0010 [0.026]

ANGLES ± 2°

FINISH -

DWN  
MICHAEL S. FEHER  
05APR2002

CHK  
GENE JACONO  
05APR2002

APVD  
KURT A. RANDOLPH  
05APR2002

PRODUCT SPEC

APPLICATION SPEC

114-13166

WEIGHT -

CUSTOMER DRAWING

**tyco**  
**Electronics**

Tyco Electronics Corporation  
Harrisburg, Pa 17105-3608

NAME

STANDARD TAB  
SIAMEZE POCKET SPECIFICATION

SIZE  
A2

CAGE CODE  
00779

DRAWING NO  
C=1601425

RESTRICTED TO  
-

SCALE  
4:1

SHEET  
1

OF  
1

REV  
B

# Mouser Electronics

Authorized Distributor

Click to View Pricing, Inventory, Delivery & Lifecycle Information:

[TE Connectivity:](#)

[4-1601041-1](#)