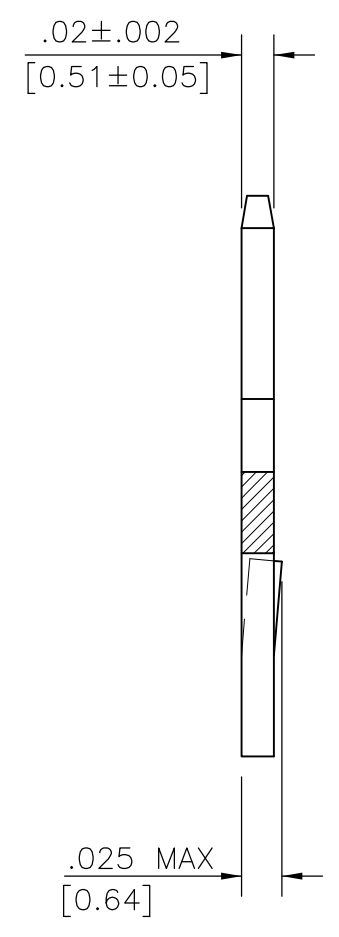
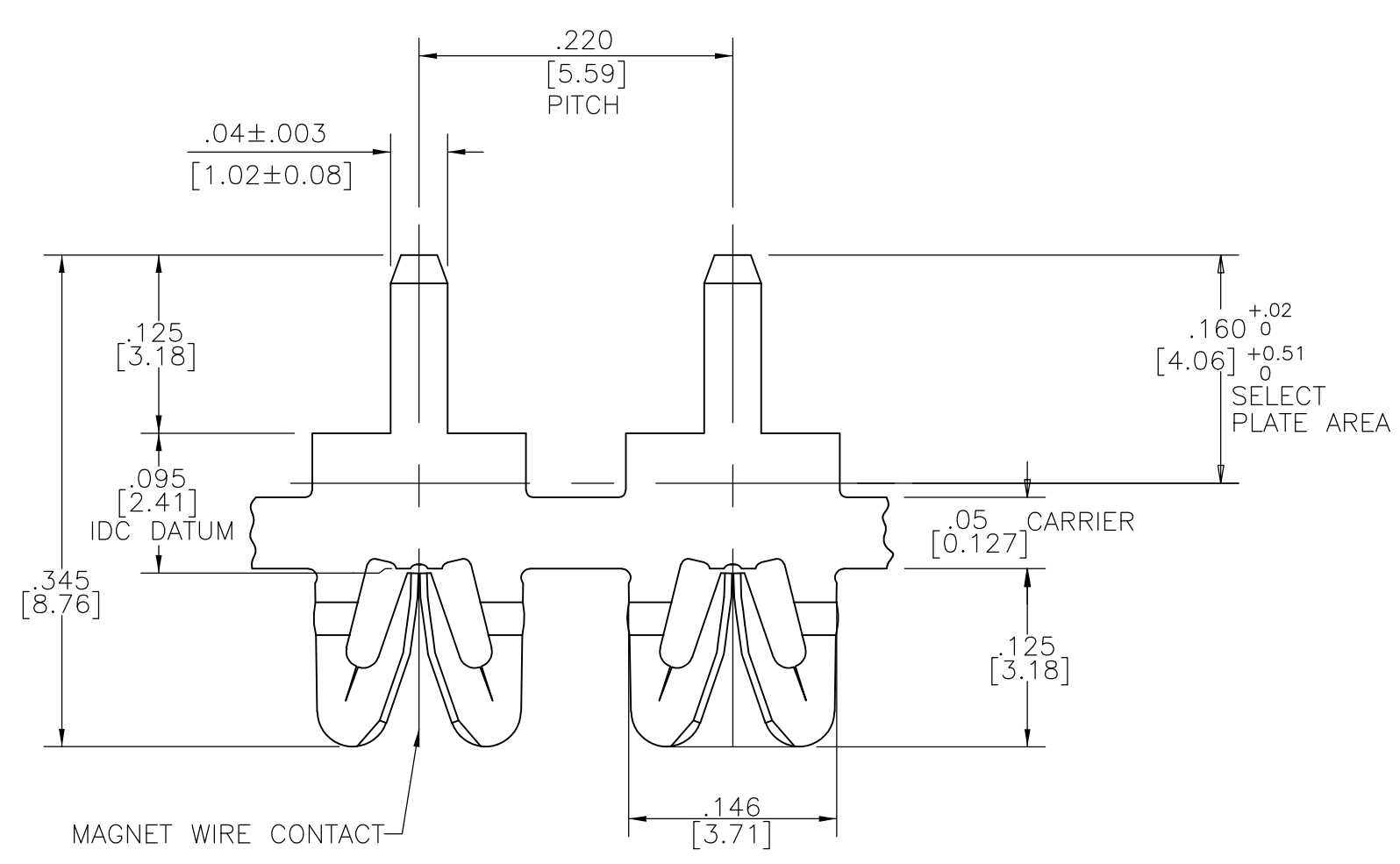


D

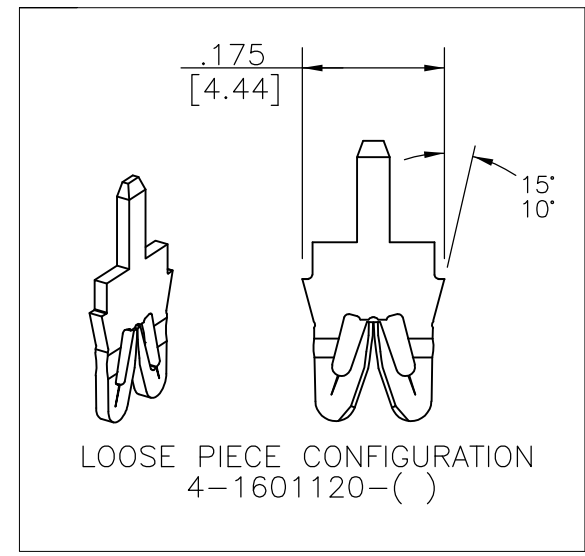
C

B

A



1. SPECIFICATIONS:
MAGNET WIRE #27 - #36 AWG,
0.38mm (.015") - 0.13 (.005") DIA. COPPER
OTHER SIZES MAY BE ACCOMMODATED,
CONSULT TYCO ELECTRONICS FOR APROVAL.
2. POCKET RECOMMENDATION: #1601424
3. TERMINAL APPLICATION TO COMPLY WITH
TYCO ELECTRONICS SPECIFICATION 114-13166
FIGURE 5.



OBSOLETE

OBSOLETE

SUPERSEDED

OBSOLETE

OBSOLETE	SELECTIVE TIN PLATE OVER NICKEL	---	4-1601120-4
	SELECTIVE POST TIN LEAD PLATE OVER NICKEL	050-011-119	4-1601120-2
	SELECTIVE TIN PLATE OVER NICKEL	---	2-1601120-4
	SELECTIVE POST TIN LEAD PLATE OVER NICKEL	150-012-119	2-1601120-2
OBSOLETE	UNPLATED	150-012-000	2-1601120-1
	SELECTIVE TIN PLATE OVER NICKEL	---	1601120-4
SUPERSEDED	SELECTIVE POST TIN LEAD PLATE OVER NICKEL	150-011-019	1601120-3
	SELECTIVE POST TIN LEAD PLATE OVER NICKEL	150-011-119	1601120-2
OBSOLETE	UNPLATED	150-011-000	1601120-1
	FINISH	REFERENCE P/N	TYCO PART NUMBER
THIS DRAWING IS A CONTROLLED DOCUMENT.		DWN J.WELLER 11JAN2002 CHK M.FEHER 11JAN2002 APVD K.RANDOLPH 11JAN2002	NAME
DIMENSIONS: INCHES		PRODUCT SPEC 108-2244	APPLICATION SPEC
TOLERANCES UNLESS OTHERWISE SPECIFIED: 0 PLC ± - 1 PLC ± - 2 PLC ± .01[0.25] 3 PLC ± .005[0.13] 4 PLC ± - ANGLES ± 2°		FINISH	SCALE 1:3
MATERIAL BRASS, SPRING HARD		SEE TABLE	WEIGHT 0.000000
		CUSTOMER DRAWING	RESTRICTED TO
		SIZE A2	CAGE CODE 00779
		DRAWING NO C=1601120	REV E2
		SHEET 1 OF 1	

1601120

A

Mouser Electronics

Authorized Distributor

Click to View Pricing, Inventory, Delivery & Lifecycle Information:

[TE Connectivity:](#)

[2-1601120-1](#)