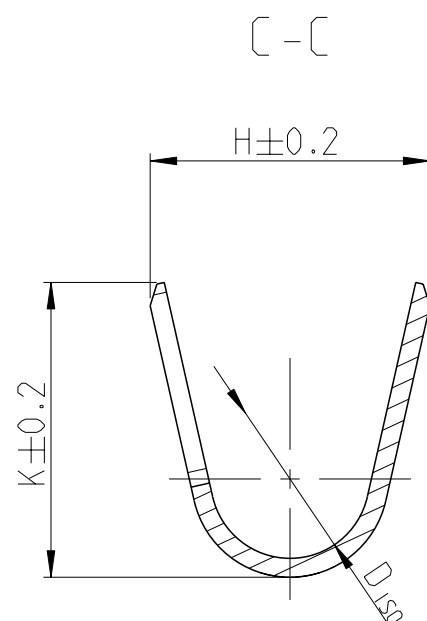
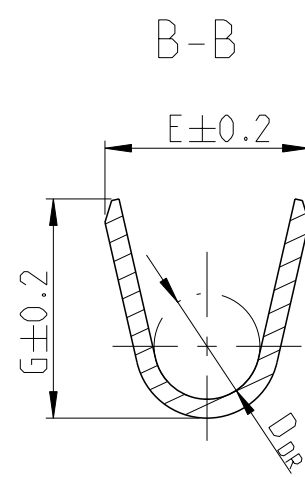
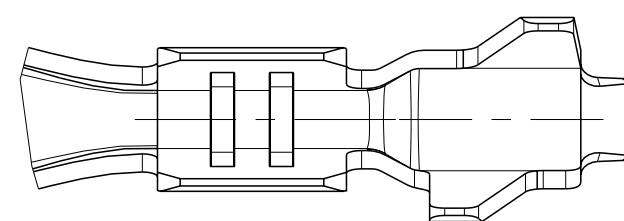


Kontaktkoerper/BODY
Material: CuSn0.15
Oberflaeche/SURFACE: 0.8-3.5µm Sn
Tabspitze/TAB: Sn ueber/OVER 0.8-3µm Ni



Crimpausführung A
CRIMP DESIGN A



1 Massgebend ist der deutsche Text
ONLY THE GERMAN-LANGUAGE VERSION SHALL BE BINDING

2 Nur fuer FLR-Leitung nach DIN 72551, Teil 1
FOR FLR-CONDUCTOR ACCORDING TO DIN 72551-6 ONLY

3 Einzelheiten der Ausfuehrung bleiben dem Hersteller ueberlassen
DETAILS OF DESIGN ARE LEFT TO MANUFACTURER

- 4 Kontakt nur fuer Testzwecke (erhoehnte Steckzyklenzahl), nicht fuer Serieneinsatz
CONTACT ONLY FOR SPECIAL TEST-APPLICATIONS (HIGH MATING-CYCLES), NOT FOR SERIES-APPLICATION

5 Blanker Streifen darf sichtbar sein
BLANK STRIP MAY BE VISIBLE

6 Datumscode (Woche/Jahr, z.B. KW 38 / Jahr 2004)
DATE-REVISION (WEEK/YEAR, E.G. REVISION B)
DATE-CODE (WEEK/YEAR, E.G. CALENDAR WEEK 38 / YEAR 2004)
AND TE REVISION (E.G. REV. B)

7 Oberflaeche: blank, Material CuNi12Zn24
SURFACE: UNCOATED, MATERIAL CuNi12Zn24

4805 (3/13)

[illegible]

Mouser Electronics

Authorized Distributor

Click to View Pricing, Inventory, Delivery & Lifecycle Information:

[TE Connectivity:](#)

[1-1452058-1](#)