

SAFETY ORGANIZATION(S):

THIS FILTER HAS BEEN FORMALLY RECOGNIZED, CERTIFIED OR APPROVED BY THE LISTED AGENCY. THEREFORE, ALL TEST/REQUIREMENTS SPECIFIED IN THE LATEST REVISION OF THE FOLLOWING AGENCY STANDARDS HAVE BEEN MET:

- UL RECOGNIZED
- CSA CERTIFIED
- VDE APPROVED
- SEV APPROVED
- UL 1283
- CSA 22.2, NO.0,0.4,8
- VDE 565-3
- SEV 1055/TP1977/5.1.1

OPERATING SPECIFICATIONS:

LINE VOLTAGE/CURRENT:

LINE FREQUENCY:
MAX. CASE RISE @ RATED CURRENT:
MAX. LEAKAGE CURRENT, EACH

LINE TO GROUND
OPERATING AMBIENT TEMP. RANGE:

IN AN AMBIENT, T_a , HIGHER THAN 40°C, THE MAXIMUM OPERATING CURRENT, I_o , IS AS FOLLOWS:

$$I_o = I_r \sqrt{\frac{85 - T_o}{45}}$$

RELIABILITY SPECIFICATIONS:

STORAGE TEMPERATURE:

HUMIDITY:

CURRENT OVERLOAD TEST:

TEST SPECIFICATIONS:

INDUCTANCE:

CAPACITANCE: (MEASURED @ 1 KHZ, 0.25 VAC MAX., 25°C ±1°C)

LINE TO GROUND:

LINE TO LINE:

DISCHARGE RESISTOR

LINE/GROUND AND LINE/LINE

INSULATION RESISTANCE

RECOMMENDED RECEIVING INSPECTION HIPOT:

LINES TO GROUND:

LINE TO LINE:

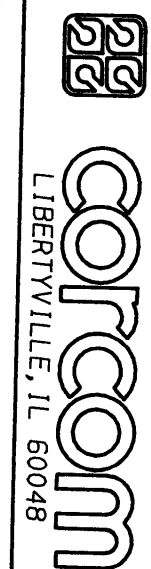
FILTER APPROVAL:

THE BEST WAY TO SELECT AND QUALIFY A FILTER IS FOR YOUR ENGINEERING TO TEST THE UNIT IN YOUR EQUIPMENT.

50Ω - 50Ω (MINIMUM) INSERTION LOSS

FREQUENCY MHZ	.01	.02	.05	.08	.1	.15	.5	1	5	10	20	30
COMMON dB	6	12	20	28	29	32	48	40	38	38	38	35
DIFF. dB	1	1	2	3	10	25	59	65	65	65	50	50

TOLERANCE EXCEPT AS NOTED
DECIMAL: .XXX .XX .X ANGLES
ENGLISH: ±.025
METRIC: ± 1°

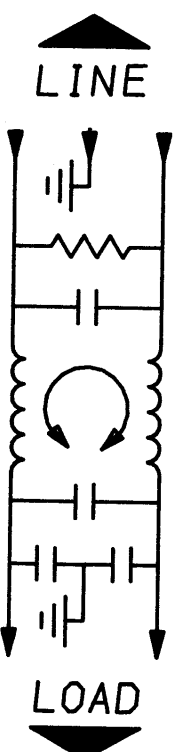
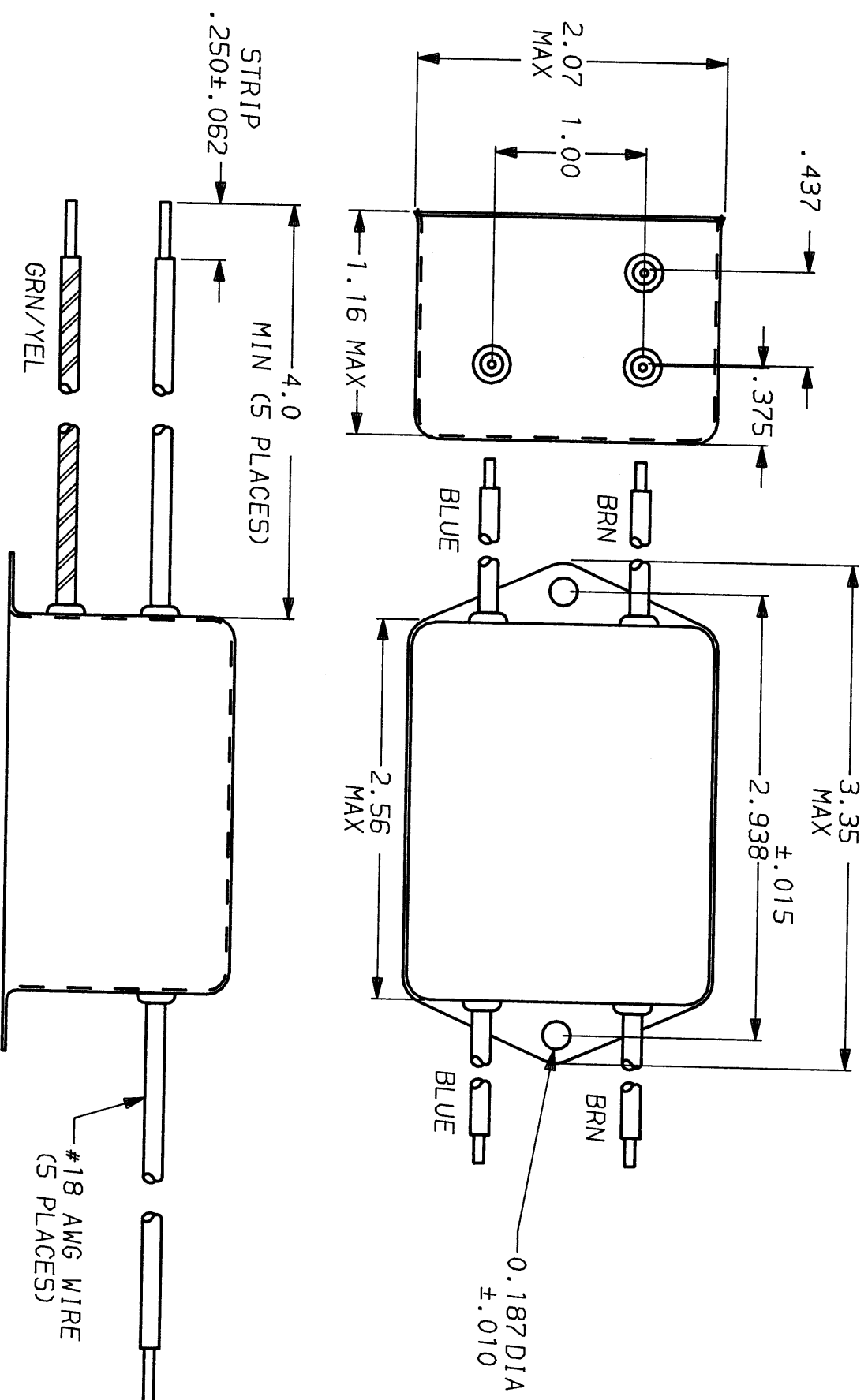


POWER LINE FILTER

FINISH:
AS SUPPLIED

AS SUPPLIED

SCALE	DATE	DRG. NO.	REV.
NTS	9-12-89	3ESK3.05	
DRW. BY	ORIGINATOR		
TDL	CW		



This document is proprietary to CORCOM INC. and is not to be reproduced nor used for manufacturing purposes except on CORCOM's order or prior written consent.

Mouser Electronics

Authorized Distributor

Click to View Pricing, Inventory, Delivery & Lifecycle Information:

[TE Connectivity:](#)

[3ESK3](#) [6609035-2](#)