

SAFETY ORGANIZATION(S).

THIS FILTER HAS BEEN FORMALLY RECOGNIZED, CERTIFIED OR APPROVED BY THE LISTED AGENCY. THEREFORE, ALL TEST/REQUIREMENTS SPECIFIED IN THE LATEST REVISION OF THE FOLLOWING AGENCY STANDARDS HAVE BEEN MET.

- UL 1283
- CSA 22.2, NO.0,0,4,8
- VDE 565-3
- SEN 432901

OPERATING SPECIFICATIONS.

- LINE VOLTAGE/CURRENT:
- 3 AMP., 120/250 VAC
- 3 AMP./40°C, 250 VAC
- 50-60Hz
- LINE FREQUENCY:
- MAX. LEAKAGE CURRENT, EACH LINE TO GROUND
- .20mA at 120V 60 Hz
- .33 mA at 250V 50 Hz
- OPERATING AMBIENT TEMP. RANGE:
- 10°C TO +40°C @ RATED CURRENT, I<sub>r</sub>
- IN AN AMBIENT, I<sub>o</sub>, HIGHER THAN 40°C, THE MAXIMUM OPERATING CURRENT, I<sub>o</sub>, IS AS FOLLOWS:

$$I_o = I_r \sqrt{\frac{85-I_a}{45}}$$

RELIABILITY SPECIFICATIONS.

- STORAGE TEMPERATURE:
- 40°C TO +85°C
- HUMIDITY:
- 21 DAYS @ 40°C 95% RH
- CURRENT OVERLOAD TEST:
- 6 TIMES RATED CURRENT FOR 8 SECONDS

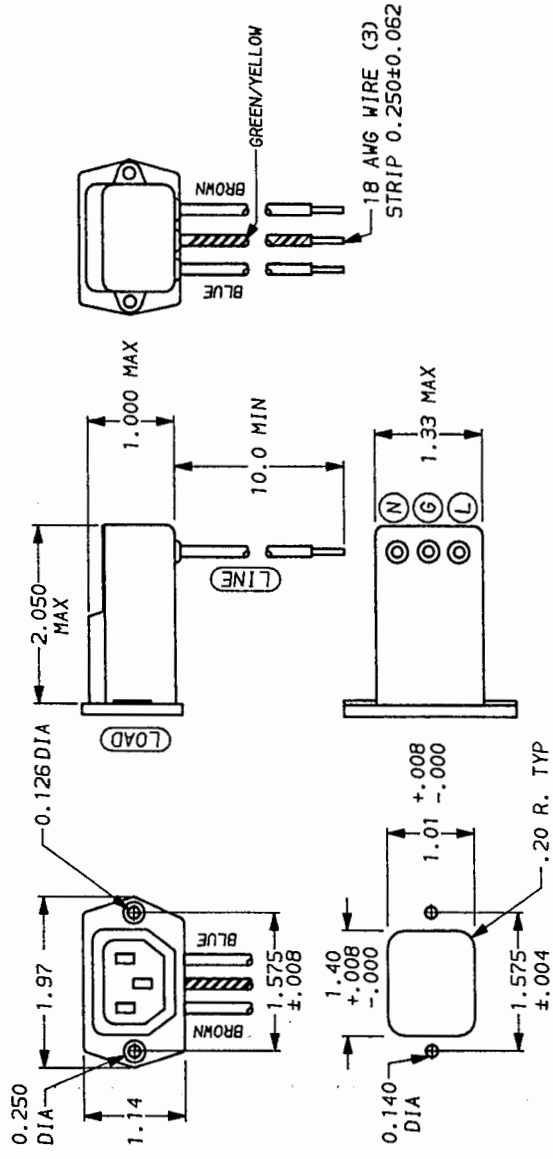
TEST SPECIFICATIONS.

- INDUCTANCE:
- 1.45 mH NOMINAL
- CAPACITANCE, (MEASURED @ 1 KHz, 0.25 VAC MAX., 25°C ±1°C)
- LINE TO GROUND, .003µF ±20%
- LINE TO LINE, .047µF ±20%
- DISCHARGE RESISTOR, 1.5 MΩ
- LINE/GROUND AND LINE/LINE INSULATION RESISTANCE 6000 MΩ (MIN) AT 100 VDC
- (W/O DISCHARGE RESISTOR) 20°C AND 50% RH

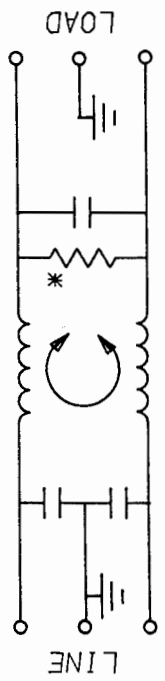
RECOMMENDED RECEIVING INSPECTION HIPOTL.

- 2250 VDC FOR 1 MINUTE
- 1450 VDC FOR 1 MINUTE

FILTER APPROVAL.  
THE BEST WAY TO SELECT AND QUALIFY A FILTER IS FOR YOUR ENGINEERING TO TEST THE UNIT IN YOUR EQUIPMENT.



**THIS FILTER LINE AND LOAD ARE REVERSED; THE SOCKET IS LOAD.**



TOLERANCE EXCEPT AS NOTED  
DECIMAL: .XXX .XX .X ANGLES ± 1°  
ENGLISH: ±.020  
METRIC: ±

MATERIAL: AS SUPPLIED

FINISH: AS SUPPLIED

FREQUENCY MHZ	50Ω - 50p (MINIMUM) INSERTION LOSS									
.05	.1	.15	.5	1	3	5	10	30		
COMMON	10	15	19	30	36	39	48	50	47	
DIFF. dB				1	2	11	14	25	38	44

This document is proprietary to CORCON INC. and is not to be reproduced nor used for manufacturing purposes except on CORCON's order or prior written consent.



ACCESSORY OUTLET FILTER

SCALE	DATE	DRG. NO.	REV.
NTS	9-20-91		3EBF4.01
DRW. BY	CFW	CFW	

\*RESISTOR ADDED TO PRODUCT BUILT AFTER 3-30-92 (9212)

# Mouser Electronics

Authorized Distributor

Click to View Pricing, Inventory, Delivery & Lifecycle Information:

[TE Connectivity:](#)

[3EBF4](#)