

SAFETY ORGANIZATION(S):

THIS FILTER HAS BEEN FORMALLY RECOGNIZED, CERTIFIED OR APPROVED BY THE LISTED AGENCY. THEREFORE, ALL TEST/REQUIREMENTS SPECIFIED IN THE LATEST REVISION OF THE FOLLOWING AGENCY STANDARDS HAVE BEEN MET:

UL 1283
CSA 22.2, NO.0,0.4,8
VDE 565-3

OPERATING SPECIFICATIONS:
LINE VOLTAGE/CURRENT:

30 AMP., 120/250 VAC
25 AMP./40°C, 250 VAC
50-60Hz
40°C

LINE FREQUENCY:
MAX. CASE RISE θ RATED CURRENT:
MAX. LEAKAGE CURRENT, EACH
LINE TO GROUND

OPERATING AMBIENT TEMP. RANGE:
IN AN AMBIENT, T_a , HIGHER THAN 40°C, THE MAXIMUM OPERATING
CURRENT, I_o , IS AS FOLLOWS:

$$I_o = I_r \sqrt{\frac{85 - T_a}{45}}$$

RELIABILITY SPECIFICATIONS:

STORAGE TEMPERATURE:

-40°C TO +85°C
21 DAYS θ 40°C 95% RH
6 TIMES RATED CURRENT FOR 8 SECONDS

HUMIDITY:

CURRENT OVERLOAD TEST:

TEST SPECIFICATIONS:
INDUCTANCE:

.529 mH NOMINAL (Gnd Choke)
1.73 mH NOMINAL
CAPACITANCE: (MEASURED θ 1 KHz, 0.25 VAC MAX., 25°C \pm 1°C)
LINE TO GROUND:
LINE TO LINE:
DISCHARGE RESISTOR
235 K Ω

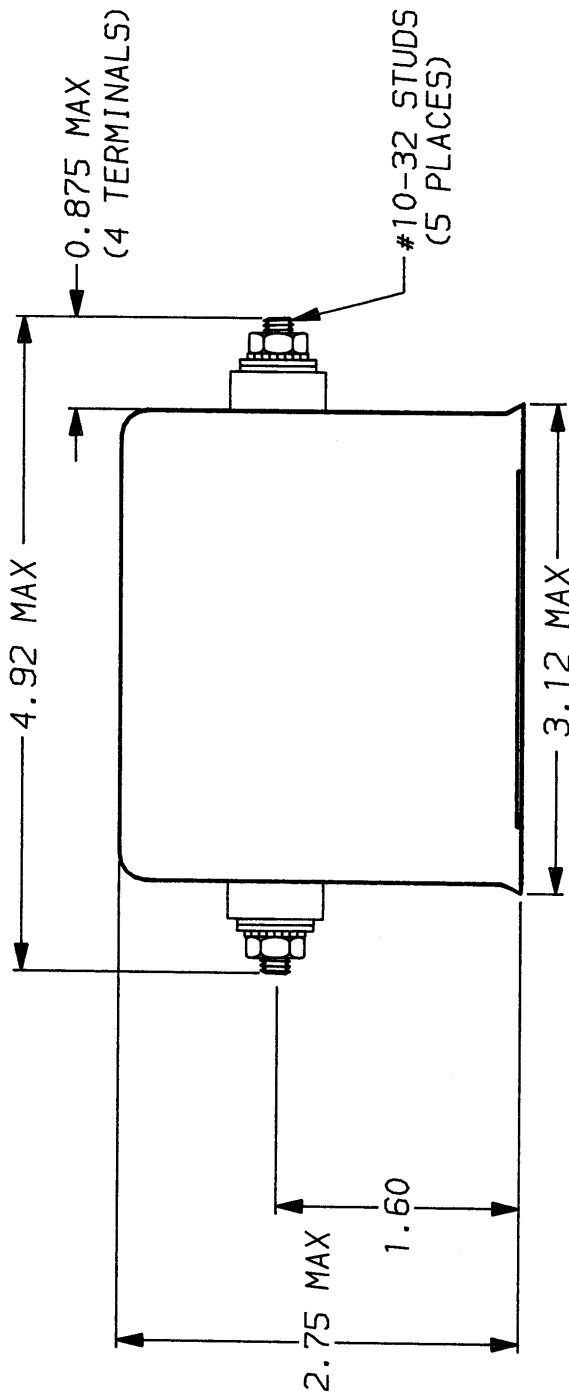
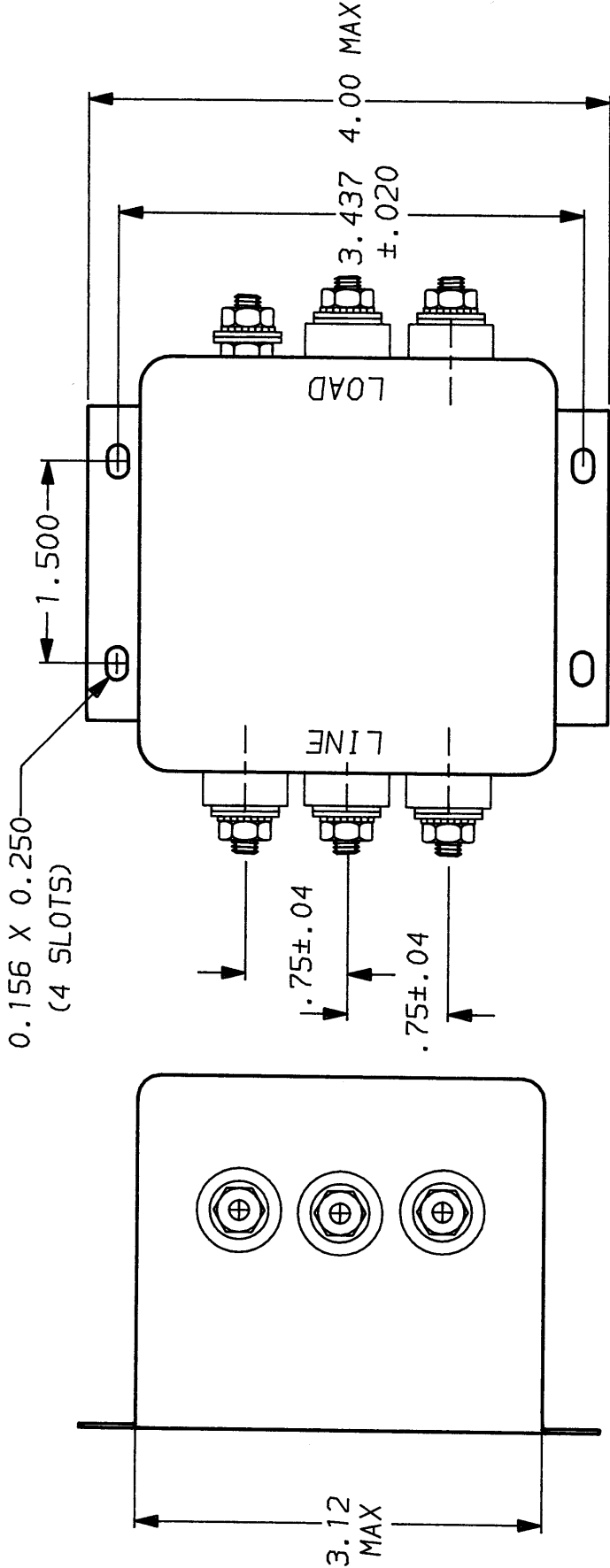
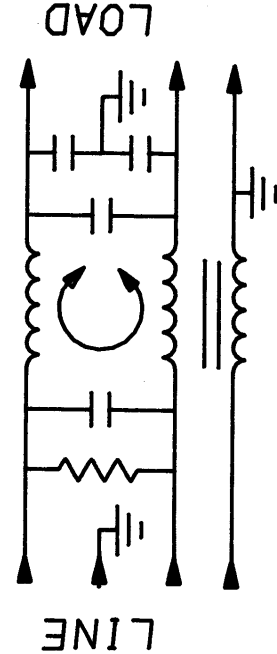
LINE/GROUND AND LINE/LINE
INSULATION RESISTANCE
6000 M Ω (MIN) AT 100 VDC
20°C AND 50% RH

RECOMMENDED RECEIVING INSPECTION HIPOT:

LINES TO GROUND:
LINE TO LINE:
2250 VDC FOR 1 MINUTE
1450 VDC FOR 1 MINUTE

FILTER APPROVAL:

THE BEST WAY TO SELECT AND QUALIFY A FILTER IS FOR YOUR ENGINEERING TO TEST THE UNIT IN YOUR EQUIPMENT.



50 Ω - 50 Ω (MINIMUM) INSERTION LOSS													
FREQUENCY MHz	.01	.05	.2	.5	1.0	2.0	5.0	10	20	30			
COMMON dB	2	9	20	27	31	36	46	51	44	39			
DIFF. dB	5	13	14	60	60	60	51	43	43	43			

This document is proprietary to CORCOM INC. and is not to be reproduced nor used for manufacturing purposes except on CORCOM's order or prior written consent.

TOLERANCE EXCEPT AS NOTED				CORCOM		LIBERTYVILLE, IL 60048		POWER LINE FILTER	
DECIMAL: .XXX	.XX	.X	ANGLES \pm 1°	SCALE		DATE		DRG. NO.	
ENGLISH: \pm .025									
METRIC: \pm				AS SUPPLIED		AS SUPPLIED		AS SUPPLIED	
FINISH:				NTS		9-12-89		30VSK6C.01	
				TDL		CW			

Mouser Electronics

Authorized Distributor

Click to View Pricing, Inventory, Delivery & Lifecycle Information:

[TE Connectivity:](#)

[30VSK6C](#)