

SAFETY ORGANIZATION(S):

THIS FILTER HAS BEEN FORMALLY RECOGNIZED, CERTIFIED OR APPROVED BY THE LISTED AGENCY. THEREFORE, ALL TEST/REQUIREMENTS SPECIFIED IN THE LATEST REVISION OF THE FOLLOWING AGENCY STANDARDS HAVE BEEN MET:

UL RECOGNIZED  
CSA CERTIFIED  
VDE APPROVED

UL 1283  
CSA 22.2, NO.0,0.4,8  
VDE 565-3

OPERATING SPECIFICATIONS:

LINE VOLTAGE/CURRENT:

30 AMP., 120/250 VAC  
25 AMP./40°C, 250 VAC  
50-60Hz  
40°C

LINE FREQUENCY:

MAX. CASE RISE @ RATED CURRENT:  
MAX. LEAKAGE CURRENT, EACH  
LINE TO GROUND  
OPERATING AMBIENT TEMP. RANGE:

.3mA at 120V 60 Hz  
.5 mA at 250V 50 Hz  
-10°C TO +40°C @ RATED CURRENT, I<sub>r</sub>

IN AN AMBIENT, T<sub>a</sub>, HIGHER THAN 40°C, THE MAXIMUM OPERATING CURRENT, I<sub>o</sub>, IS AS FOLLOWS:

$$I_o = I_r \sqrt{\frac{85-T_a}{45}}$$

RELIABILITY SPECIFICATIONS:

STORAGE TEMPERATURE:  
HUMIDITY:  
CURRENT OVERLOAD TEST:

-40°C TO +85°C  
21 DAYS @ 40°C 95% RH  
6 TIMES RATED CURRENT FOR 8 SECONDS

TEST SPECIFICATIONS:

INDUCTANCE:  
CAPACITANCE: (MEASURED @ 1 KHz, 0.25 VAC MAX., 25°C ±1°C)  
LINE TO GROUND:  
LINE TO LINE:  
DISCHARGE RESISTOR  
LINE/GROUND AND LINE/LINE  
INSULATION RESISTANCE

1.73 mH NOMINAL  
0.25 VAC MAX., 25°C ±1°C  
.004µF ±20%  
1.08µF ±20%  
235 K $\Omega$   
5000 M $\Omega$  (MIN) AT 100 VDC  
20°C AND 50% RH

RECOMMENDED RECEIVING INSPECTION HIPOT:

LINES TO GROUND:  
LINE TO LINE:

2250 VDC FOR 1 MINUTE  
1450 VDC FOR 1 MINUTE

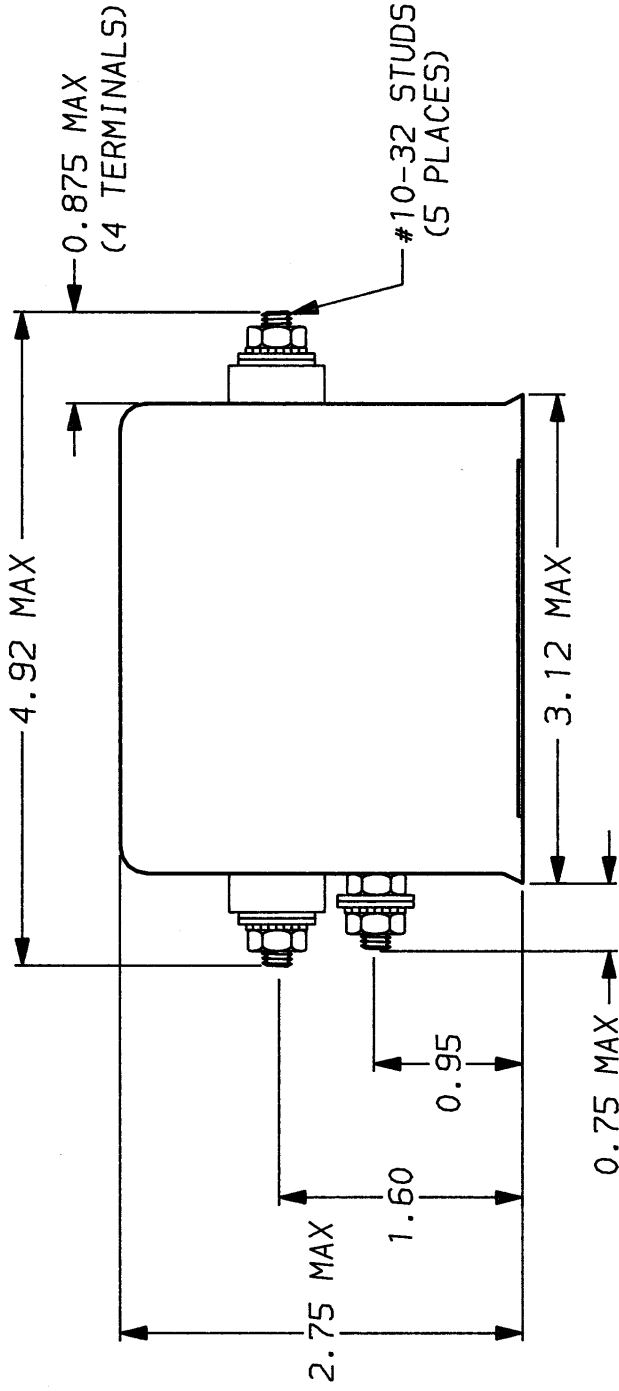
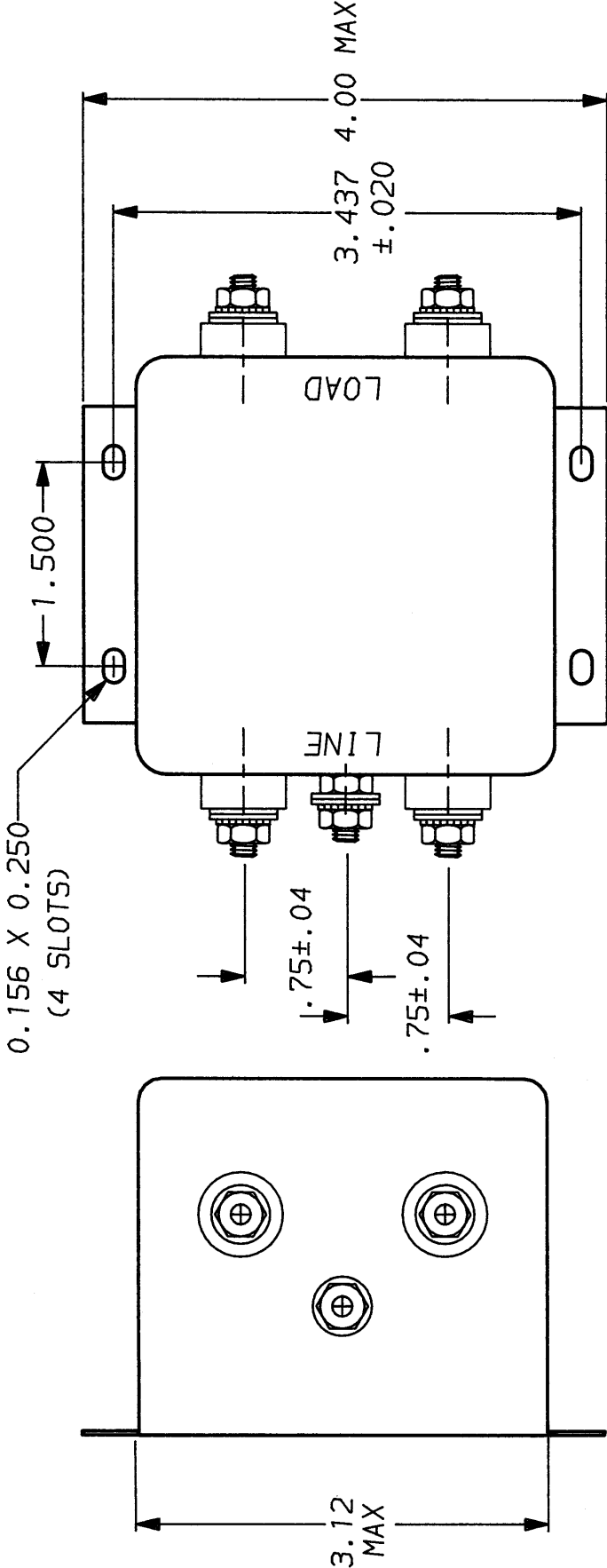
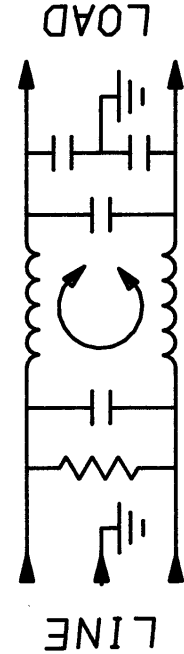
FILTER APPROVAL:

THE BEST WAY TO SELECT AND QUALIFY A FILTER IS FOR YOUR ENGINEERING TO TEST THE UNIT IN YOUR EQUIPMENT.

50 $\Omega$  - 50 $\Omega$  (MINIMUM) INSERTION LOSS

FREQUENCY MHz	.01	.05	.2	.50	1.0	2.0	5.0	10	20	30
COMMON dB	2	9	20	27	31	36	40	41	38	36
DIFF. dB	5	13	14	60	60	60	51	43	43	43

This document is proprietary to CORCOM INC. and is not to be reproduced nor used for manufacturing purposes except on CORCOM's order or prior written consent.



TOLERANCE EXCEPT AS NOTED

DECIMAL: .XXX .XX .X ANGLES  
ENGLISH: ±.025  
METRIC: ±

MATERIAL:

AS SUPPLIED

FINISH:

AS SUPPLIED



POWER LINE FILTER

SCALE	DATE	DRG. NO.	REV.
NTS	9-12-89	30ESK6.01	
DRW. BY	ORIGINATOR		
TDL	CW		

# Mouser Electronics

Authorized Distributor

Click to View Pricing, Inventory, Delivery & Lifecycle Information:

[TE Connectivity:](#)

[30ESK6](#)