

SAFETY ORGANIZATION(S).

THIS FILTER HAS BEEN FORMALLY RECOGNIZED, CERTIFIED OR APPROVED BY THE LISTED AGENCY. THEREFORE, ALL TEST/REQUIREMENTS SPECIFIED IN THE LATEST REVISION OF THE FOLLOWING AGENCY STANDARDS HAVE BEEN MET.

UL RECOGNIZED
CSA 22-2, NO. 0, 0, 4, 8
VDE APPROVED
VDE 0565-3, 0625

UL 544
CSA 22-2, NO. 0, 0, 4, 8
VDE 0565-3, 0625

OPERATING SPECIFICATIONS.

LINE VOLTAGE/CURRENT,
1 AMP., 120/250 VAC
1 AMP./40°C, 250 VAC
50-60Hz
30°C

LINE FREQUENCY,
MAX. CASE RISE & RATED CURRENT,
MAX. LEAKAGE CURRENT, EACH
LINE TO GROUND
2µA at 120V 60 Hz
5µA at 250V 50 Hz

OPERATING AMBIENT TEMP. RANGE,
-10°C TO +40°C & RATED CURRENT, I_r
IN AN AMBIENT, T_a , HIGHER THAN 40°C, THE MAXIMUM OPERATING
CURRENT, I_o , IS AS FOLLOWS,
 $I_o = I_r \sqrt{\frac{85-T_a}{45}}$

RELIABILITY SPECIFICATIONS.

STORAGE TEMPERATURE,
HUMIDITY,
CURRENT OVERLOAD TEST,
6 TIMES RATED CURRENT FOR 8 SECONDS
-40°C TO +85°C
21 DAYS @ 40°C 95% RH

TEST SPECIFICATIONS.

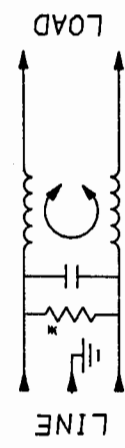
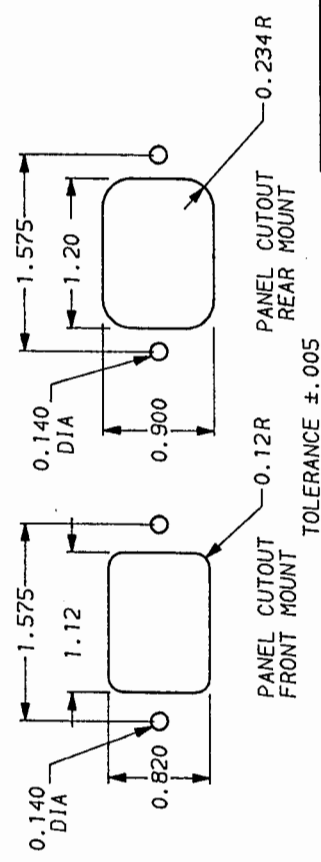
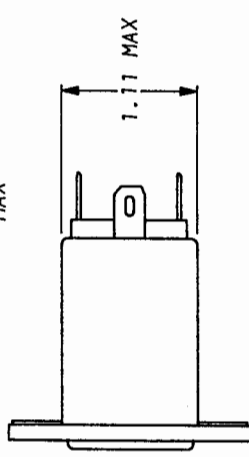
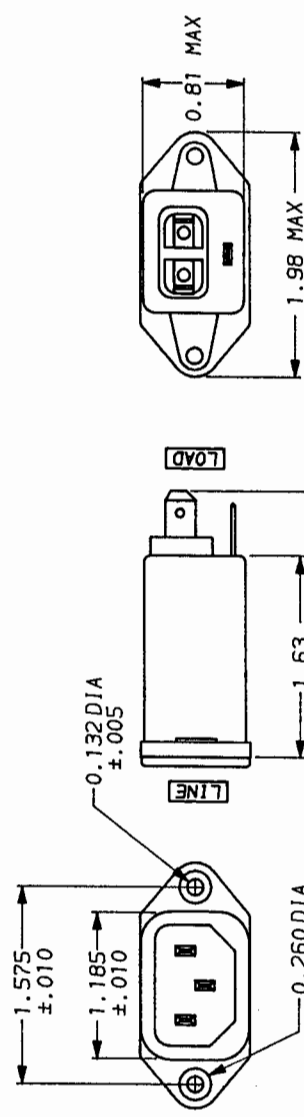
INDUCTANCE,
CAPACITANCE, (MEASURED @ 1 KHz, 0.25 VAC MAX., 25°C ±1°C)
LINE TO GROUND,
LINE TO LINE,
DISCHARGE RESISTOR,
LINE/GROUND AND LINE/LINE
INSULATION RESISTANCE
(W/O DISCHARGE RESISTOR)
10.0 mH NOMINAL
ZERO
.047µF ±20%
1.5 MΩ
5000 MΩ (MIN) AT 100 VDC
20°C AND 50% RH

RECOMMENDED RECEIVING INSPECTION HIPOT.

LINES TO GROUND,
LINES TO LINE,
1500 VAC FOR 1 MINUTE
1450 VDC FOR 1 MINUTE

FILTER APPROVAL.

THE BEST WAY TO SELECT AND QUALIFY A FILTER IS FOR YOUR ENGINEERING
TO TEST THE UNIT IN YOUR EQUIPMENT.



50Ω - 50Ω MINIMUM INSERTION LOSS

FREQUENCY MHz	.10	.05	.10	.15	.50	1	3	5	10	30
COMMON dB	8	21	29	32	42	45	42	32	25	19
DIFF. dB	-	-	-	-	1	10	16	25	30	31

This document is proprietary to CORCOM INC. and is not
to be reproduced nor used for manufacturing purposes
except on CORCOM's order or prior written consent.

corcom
LIBERTYVILLE, IL 60048

POWER LINE FILTER

SCALE: NTS 9-19-91
DATE: 9-19-91
REV. NO. 1EBH1.01

*RESISTOR ADDED TO PRODUCT BUILT AFTER 3-30-92 (9212).

Mouser Electronics

Authorized Distributor

Click to View Pricing, Inventory, Delivery & Lifecycle Information:

[TE Connectivity:](#)

[1EBH1](#)